

Klinger Type RX

Applications:

- Used for high pressure applications
- Interchangeable with Type R Octagonal joints

Typical Properties:

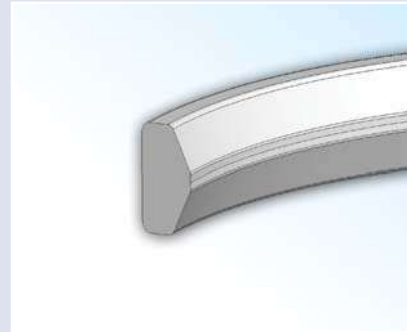
- High integrity seal at high pressures
- Suitable for flat bottom groove flanges
- Pressure energised design improves efficiency of seal with increasing internal pressure
- Can be drilled to create "SRX" ring joint for subsea installation

Typical Specifications:

Material :	Soft Iron
Max. temperature :	400°C
Max. pressure:	Up to Class 5000

Availability:

Manufactured to ASME B16.20 or API 6A
Also available in a range of alloys shown on page 82.



Metallic

Type RX RTJ Dimensions to ASME B16.20

Nominal Size	Ring Number	Class	Outside Diameter	Width	Width of Flat	Height of outside bevel	Height of Ring	Radius	Hole Size
RX-20	1.1/2"	2000, 3000, 5000	3.000	0.344	0.182	0.125	0.750	0.06	-
RX-23	2 "	2000	3.672	0.469	0.254	0.167	1.000	0.06	-
RX-24	2 "	3000, 5000	4.172	0.469	0.254	0.167	1.000	0.06	-
RX-25	3.1/8"	5000	4.313	0.344	0.182	0.125	0.750	0.06	-
RX-26	2.1/2"	2000	4.406	0.469	0.254	0.167	1.000	0.06	-
RX-27	2.1/2"	3000, 5000	4.656	0.469	0.254	0.167	1.000	0.06	-
RX-31	3 "	2000, 3000	5.297	0.469	0.254	0.167	1.000	0.06	-
RX-35	3 "	5000	5.797	0.469	0.254	0.167	1.000	0.06	-
RX-37	4 "	2000, 3000	6.297	0.469	0.254	0.167	1.000	0.06	-
RX-39	4 "	5000	6.797	0.469	0.254	0.167	1.000	0.06	-
RX-41	5 "	2000, 3000	7.547	0.469	0.254	0.167	1.000	0.06	-
RX-44	5 "	5000	8.047	0.469	0.254	0.167	1.000	0.06	-
RX-45	6 "	2000, 3000	8.734	0.469	0.254	0.167	1.000	0.06	-
RX-46	6 "	5000	8.750	0.531	0.263	0.188	1.125	0.06	-
RX-47	8" (1)	5000	9.656	0.781	0.407	0.271	1.625	0.06	-
RX-49	8 "	2000, 3000	11.047	0.469	0.254	0.167	1.000	0.06	-
RX-50	8 "	5000	11.156	0.656	0.335	0.208	1.250	0.06	-
RX-53	10 "	2000, 3000	13.172	0.469	0.254	0.167	1.000	0.06	-
RX-54	10 "	5000	13.281	0.656	0.335	0.208	1.250	0.06	-
RX-57	12 "	2000, 3000	15.422	0.469	0.254	0.167	1.000	0.06	-
RX-63	14 "	5000	17.391	1.063	0.582	0.333	2.000	0.09	-
RX-65	16 "	2000	18.922	0.469	0.254	0.167	1.000	0.06	-
RX-66	16 "	3000	18.031	0.656	0.335	0.208	1.250	0.06	-
RX-69	18 "	2000	21.422	0.469	0.254	0.167	1.000	0.06	-
RX-70	18 "	3000	21.656	0.781	0.407	0.271	1.625	0.09	-

All dimensions in Inches



Telephone : 01274 - 688222
 Fax : 01274 - 688549
 E-mail : enquiries@klingeruk.co.uk

METALLIC RING JOINTS

Type RX RTJ Dimensions to ASME B16.20

Nominal Size	Ring Number	Class	Outside Diameter	Width	Width of Flat	Height of outside bevel	Height of Ring	Radius	Hole Size
RX-73	20 "	2000	23.469	0.531	0.263	0.208	1.250	0.06	-
RX-74	20 "	3000	23.656	0.781	0.407	0.271	1.625	0.09	-
RX-99	8" (1)	2000, 3000	9.672	0.469	0.254	0.167	1.000	0.06	-
RX-201	1.3/8"	5000	2.026	0.226	0.126	0.057	0.445	0.02	-
RX-205	1.13/16"	5000	2.453	0.219	0.120	0.072	0.437	0.02	-
RX-210	2.9/16"	5000	3.844	0.375	0.213	0.125	0.750	0.03	-
RX-215	4.1/16"	5000	5.547	0.469	0.210	0.167	1.000	0.06	-

Metallic

(1) Crossover flange connection
All dimensions in Inches