

Klinger Type R Octagonal

Applications:

- Used for high pressure applications.

Typical Properties:

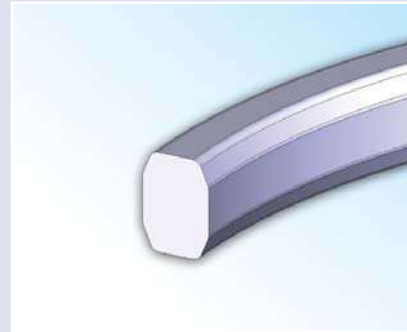
- High integrity seal at high pressures
- Suitable for flat bottom groove flanges
- An improvement on the original oval RTJ design

Typical Specifications:

Material :	Soft Iron
Max. temperature :	400°C
Max. pressure:	Up to Class 2500

Availability:

Manufactured to ASME B16.20 or API 6A
Also available in a range of alloys shown on page 82.



Metallic

Type R Octagonal RTJ Dimensions to ASME B16.20

Ring Number	Nominal Size	Class	Pitch Diameter	Width	Height	Width of Flat	Radius
R-11	1/2"	300, 600	1.344	0.250	0.380	0.170	0.06
R-12	1/2"	900, 1500	1.563	0.313	0.500	0.206	0.06
R-13	3/4"	300, 600	1.688	0.313	0.500	0.206	0.06
R-13	1/2"	2500	1.688	0.313	0.500	0.206	0.06
R-14	3/4"	900, 1500	1.750	0.313	0.500	0.206	0.06
R-15	1 "	150	1.875	0.313	0.500	0.206	0.06
R-16	1 "	300, 600, 900, 1500	2.000	0.313	0.500	0.206	0.06
R-16	3/4"	2500	2.000	0.313	0.500	0.206	0.06
R-17	1.1/4"	150	2.250	0.313	0.500	0.206	0.06
R-18	1.1/4"	300, 600, 900, 1500	2.375	0.313	0.500	0.206	0.06
	1 "	2500	2.375	0.313	0.500	0.206	0.06
R-19	1.1/2"	150	2.563	0.313	0.500	0.206	0.06
R-20	1.1/2"	300, 600, 900, 1500	2.688	0.313	0.500	0.206	0.06
R-21	1.1/4"	2500	2.844	0.438	0.630	0.305	0.06
R-22	2 "	150	3.250	0.313	0.500	0.206	0.06
R-23	2 "	300, 600	3.250	0.438	0.630	0.305	0.06
R-23	1.1/2"	2500	3.250	0.438	0.630	0.305	0.06
R-24	2 "	900, 1500	3.750	0.438	0.630	0.305	0.06
R-25	2.1/2"	150	4.000	0.313	0.500	0.206	0.06
R-26	2.1/2"	300, 600	4.000	0.438	0.630	0.305	0.06
R-26	2 "	2500	4.000	0.438	0.630	0.305	0.06
R-27	2.1/2"	900, 1500	4.250	0.438	0.630	0.305	0.06
R-28	2.1/2"	2500	4.375	0.500	0.690	0.341	0.06
R-29	3 "	150	4.500	0.313	0.500	0.206	0.06
R-30	3"(1)	300	4.625	0.438	0.630	0.305	0.06

All dimensions in Inches



Telephone : 01274 - 688222
 Fax : 01274 - 688549
 E- mail : enquiries@klingeruk.co.uk

METALLIC RING JOINTS

Type R Octagonal RTJ Dimensions to ASME B16.20

Ring Number	Nominal Size	Class	Pitch Diameter	Width	Height	Width of Flat	Radius
R-31	3 "	300, 600, 900	4.875	0.438	0.630	0.305	0.06
R-32	3 "	2500	5.000	0.500	0.690	0.341	0.06
R-33	3.1/2"	150	5.188	0.313	0.500	0.206	0.06
R-34	3.1/2"	300, 600	5.188	0.438	0.630	0.305	0.06
R-35	3 "	1500	5.375	0.438	0.630	0.305	0.06
R-36	4 "	150	5.875	0.313	0.500	0.206	0.06
R-37	4 "	300, 600, 900	5.875	0.438	0.630	0.305	0.06
R-38	4 "	2500	6.188	0.625	0.810	0.413	0.06
R-39	4 "	1500	6.375	0.438	0.630	0.305	0.06
R-40	5 "	150	6.750	0.313	0.500	0.206	0.06
R-41	5 "	300, 600, 900	7.125	0.438	0.630	0.305	0.06
R-42	5 "	2500	7.500	0.750	0.940	0.485	0.06
R-43	6 "	150	7.625	0.313	0.500	0.206	0.06
R-44	5 "	1500	7.625	0.438	0.630	0.305	0.06
R-45	6 "	300, 600, 900	8.313	0.438	0.630	0.305	0.06
R-46	6 "	1500	8.313	0.500	0.690	0.341	0.06
R-47	6 "	2500	9.000	0.750	0.940	0.485	0.06
R-48	8 "	150	9.750	0.313	0.500	0.206	0.06
R-49	8 "	300, 600, 900	10.625	0.438	0.630	0.305	0.06
R-50	8 "	1500	10.625	0.625	0.811	0.413	0.06
R-51	8 "	2500	11.000	0.875	1.060	0.583	0.06
R-52	10 "	150	12.000	0.313	0.500	0.206	0.06
R-53	10 "	300, 600, 900	12.750	0.438	0.630	0.305	0.06
R-54	10 "	1500	12.750	0.625	0.811	0.413	0.06
R-55	10 "	2500	13.500	1.125	1.380	0.780	0.09
R-56	12 "	150	15.000	0.313	0.500	0.206	0.06
R-57	12 "	300, 600, 900	15.000	0.438	0.630	0.305	0.06
R-58	12 "	1500	15.000	0.875	1.060	0.583	0.06
R-59	14 "	150	15.625	0.313	0.500	0.206	0.06
R-60	12 "	2500	16.000	1.250	1.500	0.879	0.09
R-61	14 "	300, 600	16.500	0.438	0.630	0.305	0.06
R-62	14 "	900	16.500	0.625	0.810	0.413	0.06
R-63	14 "	1500	16.500	1.000	1.250	0.681	0.09
R-64	16 "	150	17.875	0.313	0.500	0.206	0.06
R-65	16 "	300, 600	18.500	0.438	0.630	0.305	0.06
R-66	16 "	900	18.500	0.625	0.810	0.413	0.06
R-67	16 "	1500	18.500	1.125	1.380	0.780	0.09
R-68	18 "	150	20.375	0.313	0.500	0.206	0.06
R-69	18 "	300, 600	21.000	0.438	0.630	0.305	0.06
R-70	18 "	900	21.000	0.750	0.940	0.485	0.06
R-71	18 "	1500	21.000	1.125	1.380	0.780	0.09
R-72	20 "	150	22.000	0.313	0.500	0.206	0.06
R-73	20 "	300, 600	23.000	0.500	0.690	0.341	0.06
R-74	20 "	900	23.000	0.750	0.940	0.485	0.06
R-75	20 "	1500	23.000	1.250	1.500	0.879	0.09
R-76	24 "	150	26.500	0.313	0.500	0.206	0.06
R-77	24 "	300, 600	27.250	0.625	0.810	0.413	0.06
R-78	24 "	900	27.250	1.000	1.250	0.681	0.09

All dimensions in Inches

Metallic

Type R Octagonal RTJ Dimensions to ASME B16.20

Ring Number	Nominal Size	Class	Pitch Diameter	Width	Height	Width of Flat	Radius
R-79	24 "	1500	27.250	1.375	1.630	0.977	0.09
R-80	22 "	150	24.250	0.313	0.500	0.206	0.06
R-81	22 "	300, 600	25.000	0.563	0.750	0.377	0.06
R-82	1 "	10000	2.250	0.438	0.630	0.305	0.06
R-84	1.1/2"	10000	2.500	0.438	0.630	0.305	0.06
R-85	2 "	10000	3.125	0.500	0.690	0.341	0.06
R-86	2.1/2"	10000	3.563	0.625	0.810	0.413	0.06
R-87	3 "	10000	3.938	0.625	0.810	0.413	0.06
R-88	4 "	10000	4.875	0.750	0.940	0.485	0.06
R-89	3.1/2"	10000	4.500	0.750	0.940	0.485	0.06
R-90	5 "	10000	6.125	0.875	1.060	0.583	0.06
R-91	10 "	10000	10.250	1.250	1.500	0.879	0.06
R-92	-	-	9.000	0.438	0.630	0.305	0.06
R-93	26 "	300, 600	29.500	0.750	0.940	0.485	0.06
R-94	28 "	300, 600	31.500	0.750	0.940	0.485	0.06
R-95	30 "	300, 600	33.750	0.750	0.940	0.485	0.06
R-96	32 "	300, 600	36.000	0.875	1.060	0.583	0.06
R-97	34 "	300, 600	38.000	0.875	1.060	0.583	0.06
R-98	36 "	300, 600	40.250	0.875	1.060	0.583	0.06
R-99	8 "	2000, 3000	9.250	0.438	0.630	0.305	0.06
R-100	26 "	900	29.500	1.125	1.380	0.780	0.09
R-101	28 "	900	31.500	1.250	1.500	0.879	0.09
R-102	30 "	900	33.750	1.250	1.500	0.879	0.09
R-103	32 "	900	36.000	1.250	1.500	0.879	0.09
R-104	34 "	900	38.000	1.375	1.630	0.977	0.09
R-105	36 "	900	40.250	1.375	1.630	0.977	0.09

(1) R-30 for lapped joint only

All dimensions in Inches