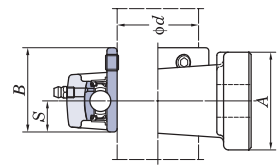
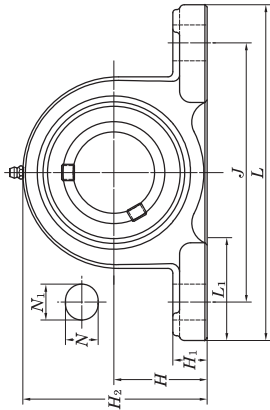


## Pillow Block Units

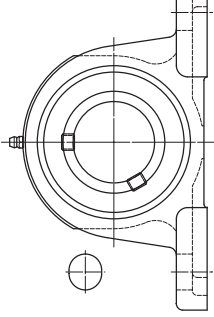
### UCP Cylindrical bore (with set screws) d (45) ~ (75) mm



UCP2



UCPX.3



Shaft Dia. mm	Dimensions															Bolt Size inch mm	Unit No.	Standard Housing No.	Bearing No.	Mass kg	Basic Load Ratings kN		Factor $f_0$
	H	L	A	J	N	N <sub>1</sub>	H <sub>1</sub>	H <sub>2</sub>	L <sub>1</sub>	B	S	inch	mm	C <sub>r</sub>	C <sub>0r</sub>								
45	1 3/4	2 1/64	9 21/32	2 5/8	7 15/32	25/32	1 3/16	13/16	5 3/16	2 15/16	2.244	0.866	5/8	UCP309-28	UC309-28	4.9	48.9	29.5	13.3				
	1 7/8	67	245	67	190	20	30	21	132	75	57	22	M16	UCP309	UC309	4.9	48.9	29.5	13.3				
50	2 1/4	8 1/8	2 3/8	6 1/4	25/32	7/8	13/16	4 7/16	2 3/8	2.031	0.748	5/8	UCP210-30	UC210-30	2.9	35.1	23.3	14.4					
	57.2	206	60	159	20	22	21	113	60	51.6	19	M16	UCP210-31	UC210-31	2.9	35.1	23.3	14.4					
2	2 1/2	9 1/2	2 7/8	6 23/32	25/32	1 13/32	7/8	4 3/32	3	2.189	0.874	5/8	UCP210-32	UC210-32	2.9	43.4	29.4	14.4					
	63.5	241	73	171	20	36	22	126	76	55.6	22.2	M16	UCP210-31	UC210-31	2.9	43.4	29.4	14.4					
2	2 61/64	10 13/16	2 15/16	8 11/32	25/32	1 3/8	15/16	5 13/16	3 15/32	2.402	0.866	5/8	UCPX10-31	UCX10-31	4.6	62.0	38.3	13.2					
	75	275	75	212	20	35	24	148	88	61	22	M16	UCPX10	UCX10	4.6	62.0	38.3	13.2					
2	2 1/2	8 5/8	2 3/8	6 23/32	25/32	7/8	29/32	4 29/32	2 9/16	2.189	0.874	5/8	UCP211-32	UC211-32	3.6	43.4	29.4	14.4					
	63.5	219	60	171	20	22	23	125	65	55.6	22.2	M16	UCP211-34	UC211-34	3.6	43.4	29.4	14.4					
55	2 3/4	10 1/4	3 1/8	7 1/4	31/32	1 13/32	1 3/32	5 15/32	3 9/32	2.563	1.000	3/4	UCPX11	UCX11	6.5	52.4	36.2	14.4					
	69.8	260	79	184	25	36	28	139	83	65.1	25.4	M20	UCPX11-35	UCX11-35	6.5	52.4	36.2	14.4					
2	3 5/32	12 7/32	3 5/32	9 9/32	25/32	1 1/2	1 1/16	6 7/32	3 17/32	2.598	0.984	5/8	UCP311-32	UC311-32	7.9	71.6	45.0	13.2					
	80	310	80	236	20	38	27	158	90	66	25	M16	UCP311	UC311	7.9	71.6	45.0	13.2					
2 1/4	2 3/4	9 1/2	2 3/4	7 1/4	25/32	3/32	31/32	5 7/16	2 7/8	2.563	1.000	5/8	UCP212-36	UC212-36	4.9	52.4	36.2	14.4					
	69.8	241	70	184	20	25	25	138	73	65.1	25.4	M16	UCP212	UC212	4.9	52.4	36.2	14.4					
60	3	11 1/4	3 1/4	8	31/32	1 9/16	1 3/32	5 31/32	3 15/32	2.563	1.000	3/4	UCPX12	UCX12	7.7	57.2	40.1	14.4					
	76.2	286	83	203	25	40	28	152	88	65.1	25.4	M20	UCPX12-39	UCX12-39	7.7	57.2	40.1	14.4					
2 7/16	3 11/32	13	3 11/32	9 27/32	31/32	1 1/2	1 9/32	6 9/16	4 1/16	2.795	1.024	3/4	UCP312	UC312	9.5	81.9	52.2	13.2					
	85	330	85	250	25	38	29	167	103	71	26	M20	UCP312-39	UC312-39	9.5	81.9	52.2	13.2					
2 1/2	3	10 7/16	2 3/4	8	31/32	1 3/16	1 1/16	5 29/32	3 1/16	2.563	1.000	3/4	UCP213-40	UC213-40	5.9	57.2	40.1	14.4					
	76.2	265	70	203	25	30	27	150	78	65.1	25.4	M20	UCP213	UC213	5.9	57.2	40.1	14.4					
2 1/2	3	11 1/4	3 1/4	8	31/32	1 9/16	1 3/32	6 3/32	3 15/32	2.937	1.189	3/4	UCPX13-40	UCX13-40	8.1	62.2	44.1	14.5					
	76.2	286	83	203	25	40	28	155	88	74.6	30.2	M20	UCPX13	UCX13	8.1	62.2	44.1	14.5					
2 1/2	3 35/64	13 3/8	3 17/32	10 1/4	31/32	1 1/2	1 1/4	6 15/16	4 11/32	2.953	1.181	3/4	UCP313-40	UC313-40	10.7	92.7	59.9	13.2					
	90	340	90	260	25	38	32	176	110	75	30	M20	UCP313	UC313	10.7	92.7	59.9	13.2					
2 3/4	3 1/8	10 15/32	2 27/32	8 9/32	31/32	1 3/16	1 1/16	6 3/16	2 15/16	2.937	1.189	3/4	UCP214-44	UC214-44	6.8	62.2	44.1	14.5					
	79.4	266	72	210	25	30	27	157	75	74.6	30.2	M20	UCP214	UC214	6.8	62.2	44.1	14.5					