

Low Voltage Fuses

AFaC and BaC types

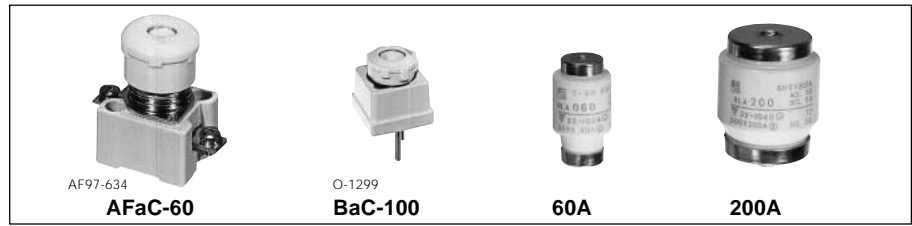
AFaC and BaC type current-limiting fuses

600V AC/DC, 3–400 Amps

■ Description

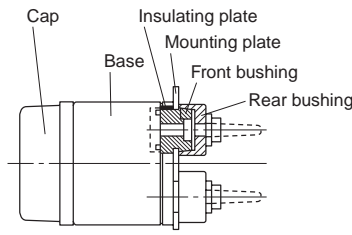
The AFaC and BaC type have an excellent current-limiting performance with an interrupting capacity as high as 100kA at 600V AC/DC. They are suitable for power circuits and control circuit applications including general power cubicles, distribution equipment, motor starters, load centers and control centers. The fuse assembly comprises base, screw cap, fuse link and adapter ring. The universal surface mounting terminals are provided with screws while the rear connection type are supplied with stud bolts. The fuse link can easily and safely be replaced by simply removing a screw cap.

The diameter of the solid ferrule fuse link varies according to the rated current. The higher the rating, the greater the diameter. As a safety feature the screw cap can only be tightened when the fuse link matches with the adapter ring located inside the base. This prevents the cap from being tightened even when fuse

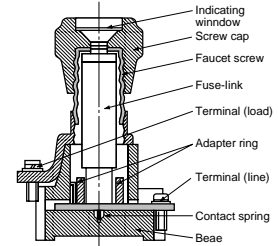


Rear connection type

Surface connection type



Thickness of mounting plate: 3.2mm or less



link with larger ratings is inserted. The operating blown indication tip can be observed through the screw cap window. The tip color indicates the current rating – for instance, pink indicates 3A and red 10A. The tip is ejected to show that the fuse has blown. Both the base and the screw cap are made from a high class

porcelain insulating material to ensure trouble-free operation. The fuse can be replaced without isolating the circuit. Since the fuse link is housed in a highly reliable porcelain barrel it is strong mechanically and thermally with no danger of explosion or production of noxious gases when blown.

■ Components of AFaC and BaC type

Parts	FA776		SD-39	SD-39		SDO 0091M	SD-63
Rated current (A)	Fuse-link Type	Color of indicator	Screw cap Type	Base Surface connection Type	Rear connection Type	Adapter ring Type	Color of adapter ring
3	BLA003	Pink	Pa30	AFa30	Ba30	R3	Pink
5	BLA005	Brown				R5	Brown
10	BLA010	Red				R10	Red
15	BLA015	Gray				R15	Gray
20	BLA020	Blue				R20	Blue
30	BLA030	Violet				—	—
40	BLA040	Black	Pa60	AFa60	Ba60	R40	Black
60	BLA060	Light red				—	—
75	BLA075	Silver	Pa100	AFa100	Ba100	R75	Silver
100	BLA100	Red				—	—
125	BLA125	Yellow	Pa200	AFa200	Ba200	R125	Yellow
150	BLA150	Light red				R150	Light red
200	BLA200	Blue				—	—
250	BLA250	Green	Pa400	AFa400	Ba400	R250	Green
300	BLA300	White				R300	White
400	BLA400	Black				—	—

Minimum ordering quantity

• Fuse-link	BLA003 to 030	100 pcs.	• Base	AFa30 Ba30	100 pcs.
	BLA 040, 060	20		AFa60 Ba60	50
	BLA 075 to 200	10		AFa100 Ba100	10
	BLA 250 to 400	5		AFa200 Ba200	5
				AFa400 Ba400	1
• Screw cap	Pa30	100 pcs.	• Adapter ring	R3 to 20, R75	100 pcs.
	Pa60	50		R40, R125 to 300	50
	Pa100	10			
	Pa200	5			
	Pa400	1			

Specifications

Fuse-link Type	Rated current (A)	Rated voltage	Interrupting capacity (kA)	Max. interrupting $I^2 t$ (Amp ² x sec.)
BLA003	3	600V AC DC	100	28
BLA005	5			110
BLA010	10			500
BLA015	15	100	100	750
BLA020	20			1.3×10^3
BLA030	30			5×10^3
BLA040	40	100	100	9.2×10^3
BLA060	60			27×10^3
BLA075	75	100	100	70×10^3
BLA100	100			100×10^3
BLA125	125	50	50	290×10^3
BLA150	150			390×10^3
BLA200	200			500×10^3
BLA250	250	20	20	1800×10^3
BLA300	300			2200×10^3
BLA400	400			3000×10^3

Ordering information

Specify the following:

- Type number

Fuse-link BLA 003

Rated current

Ex. 003 : 3 Amps
075 : 75 Amps
200 : 200 Amps

Fuse-link

Base AFa 30

Frame size

30: For 3 to 30A
60: For 40, 60A
100: For 75, 100A
200: For 125, 150, 200A
400: For 250, 300, 400A

Connection

AFa: Surface
Ba : Rear

Screw cap Pa 30

Frame size

30: For 3 to 30A
60: For 40, 60A
100: For 75, 100A
200: For 125, 150, 200A
400: For 250, 300, 400A

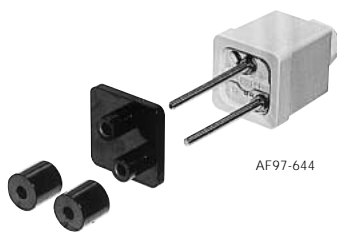
Screw cap

Mounting on steel panel

To mount a rear connection base Ba on a steel panel, an insulating plate and some bushings are used. Kits for 30, 60, 100, 200 and 400A base are available. Please specify your base type when ordering.

Two front bushings are used with 100, 200 and 400A base only.

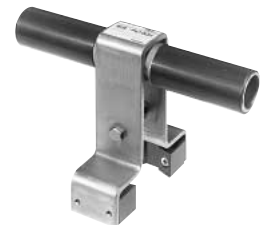
Example: Insulating plate and bushings for Ba30



Tightening tool

It is recommended that fuses with ratings of over 100A be tightened with a special tool since there is the possibility of overheating if the screw cap is not adequately tightened. This exclusive use tool is sold separately.

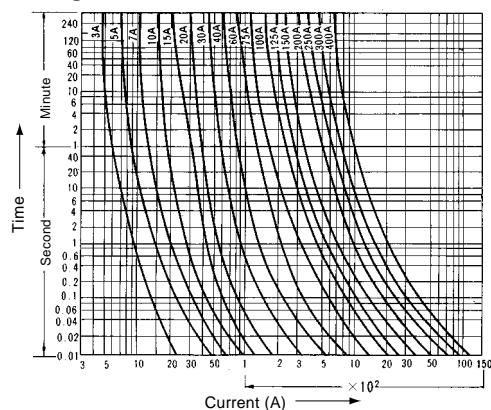
Type	Screw cap type
Pa100H	Pa100
Pa200H	Pa200
Pa400H	Pa400



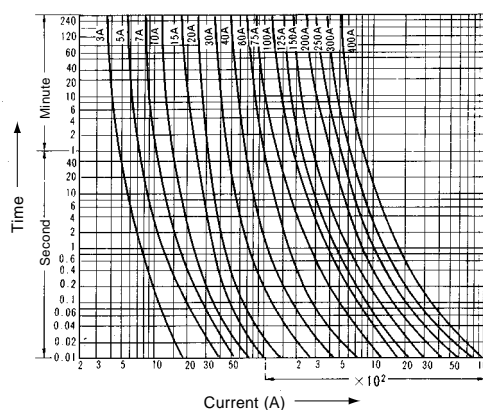
AF90-316

Characteristic curves

Melting time-current characteristic



Permissible time-current characteristic



Current-limiting characteristic

