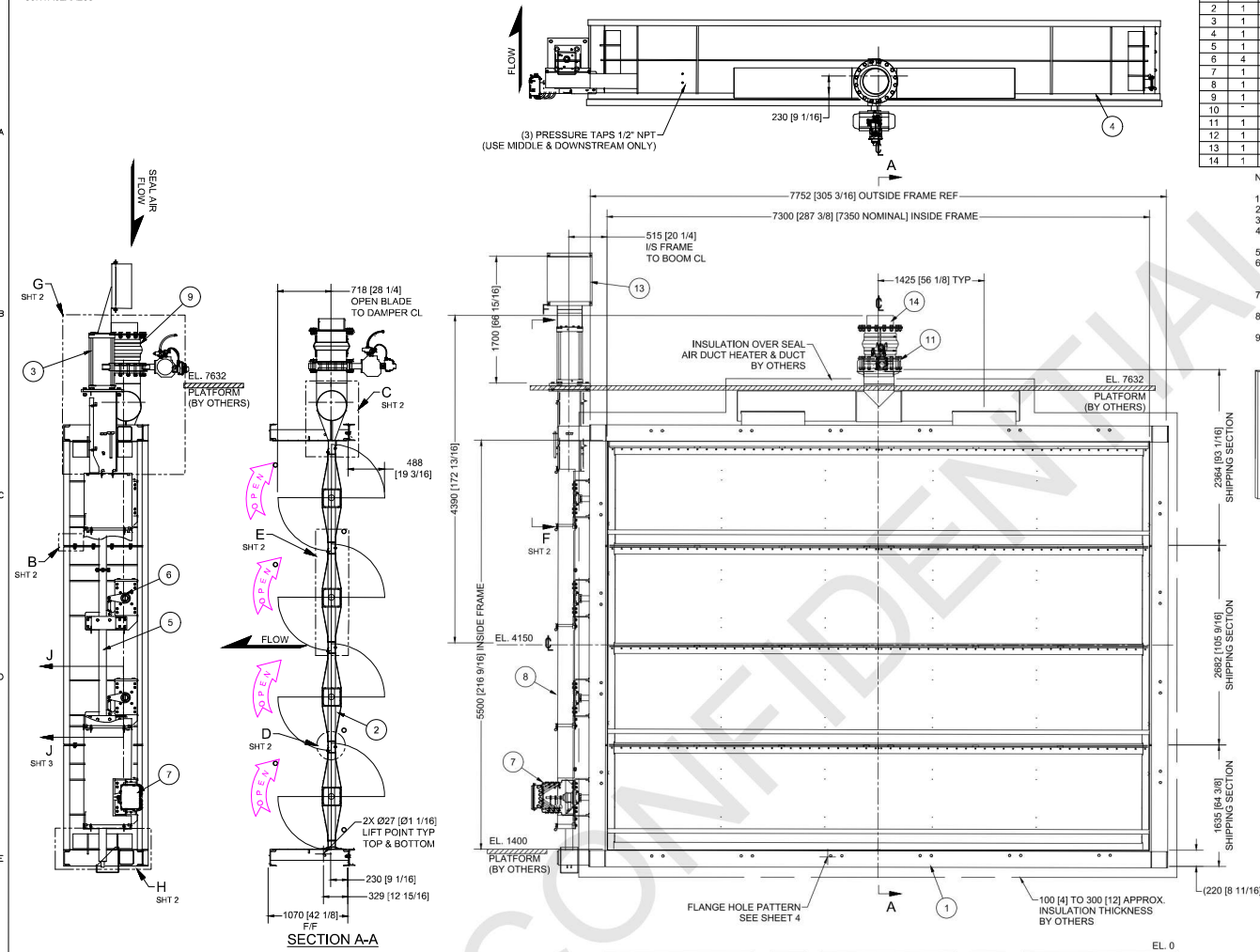


EQUIPMENT NO.  
-50HTA01AA200  
-60HTA02AA200



		PARTS LIST			
ITEM	QTY	DESCRIPTION	MATERIAL	DESIGNATION	MATERIAL LIST DESCRIPTION
1	1	FRAME ASSEMBLY	SEE DATA SHEET		ASSEMBLY
2	1	BLADE ASSEMBLY	SEE DATA SHEET		W/ 17-4PH SS SHAFTS
3	1	ACTUATOR ASSEMBLY	PNEUMATIC	ON-OFF	ASSEMBLY, SEE NOTE 6
4	1	COMPANION FLANGE	CS	G220x79	WELDMENT
5	1	DRIVE TUBE	CS		ASSEMBLY
6	4	TOGGLE DRIVE ARRANGEMENT			ASSEMBLY
7	1	LIMIT SWITCH ASSEMBLY			ASSEMBLY, SEE NOTE 3
8	1	DRIVE / LINKAGE COVER	CS		EXPANDED METAL ASSEMBLY
9	1	EXPANSION JOINT	TEXTILE	DN400	ASSEMBLY
10	-	ITEM NOT USED			
11	1	SEAL AIR DAMPER	PNEUMATIC	DN400	ASSEMBLY, DRY DUTY
12	1	ID TAG	SS		BACHMANN INDUSTRIES STANDARD
13	1	ACTUATOR CONTROL BOX	SS	600x600x210	ASSEMBLY
14	1	COUNTER FLANGE, SEAL AIR	CS	DN350	WELDMENT

- NOTES:
1. ALL DIMENSIONS ARE IN MILLIMETERS (INCHES), UNLESS NOTED.
  2. QUANTITIES SHOWN IN BOM FOR (1) DAMPER, TOTAL OF TWO (2) DAMPERS REQUIRED.
  3. ONE LIMIT SWITCH ASSEMBLY PER ACTUATOR WITH 3 OPEN AND 3 CLOSED SWITCHES.
  4. DAMPER FRAME SHIPPED IN THREE (3) SECTIONS AS SHOWN. ACTUATOR ASSEMBLY, SEAL AIR DAMPER AND LINKAGE COVERS SHIPPED SEPARATELY.
  5. COATING SYSTEM AS PER DOCUMENT C1529530-101-990-2005.
  6. ACTUATOR ASSEMBLY: PNEUMATIC LINEAR ACTUATOR FOR ON-OFF DUTY DAMPER FAILS IN LAST POSITION ON LOSS OF SIGNAL. STROKE TIME, OPEN AND CLOSE: 15-60 SEC. (ADJUSTABLE)
  7. MATERIAL LIST C276 REPRESENTS A FAMILY OF MATERIALS THAT CAN BE USED INTERCHANGEABLY, INCLUDING ALLOY C276, DIN 2.4819, EN6054, UNS N0276.
  8. MATERIAL LIST CS REPRESENTS A FAMILY OF MATERIALS THAT CAN BE USED INTERCHANGEABLY, INCLUDING ASTM A-36, ASTM A-283CN 10025 S235, JIS G3101 SS400, GB/T 700-1988-Q235B.
  9. BLADE LOCKING DEVICE FOR FULLY OPEN AND FULLY CLOSED DAMPER INCLUDED.

**BACHMANN INDUSTRIES, INC**  
416 LEVISTON JUNCTION ROAD AUBURN, MAINE 04210 USA  
PHONE: +1-207-784-1903 FAX: +1-207-784-1908

CUSTOMER/SITE: **HAMON / TANJUNG JATI B**  
CUST. P.O./TAG NO.: **4181456477 / 60HTA02AA200**  
SALES ORDER / ITEM NO.: **60-281500**  
DESCRIPTION: **IDF OUTLET DAMPER**  
DATE MFG. MO/ YR: **04/2019**  
www.bachmannus.com

**BACHMANN INDUSTRIES, INC**  
416 LEVISTON JUNCTION ROAD AUBURN, MAINE 04210 USA  
PHONE: +1-207-784-1903 FAX: +1-207-784-1908

CUSTOMER/SITE: **HAMON / TANJUNG JATI B**  
CUST. P.O./TAG NO.: **4181456477 / 60HTA02AA200**  
SALES ORDER / ITEM NO.: **60-281500**  
DESCRIPTION: **IDF OUTLET DAMPER**  
DATE MFG. MO/ YR: **04/2019**  
www.bachmannus.com

NOTES:  
ECN-ENGINEERING CHANGE NOTICE PROCESS IS AN INTERNAL LOT 3 PROCESS AND THE ECN NUMBER (ECN N-M-0097) IS PROVIDED TO TRACK THE CHANGES IN THIS DOCUMENT AS CLOUDED IN THIS DRAWING.

DESIGN DATA	
DESIGN TEMPERATURE:	200° C
OPERATING TEMPERATURE:	155° C
AMBIENT TEMPERATURE:	22° - 35° C
MECHANICAL DESIGN PRESSURE:	79.4 mbar
NORMAL OPERATING PRESSURE:	79.4 mbar
DIFFERENTIAL PRESSURE:	32 mbar
PRESSURE LOSS @ FULL OPEN:	0.49 mbar
DESIGN FLOW:	2,615,038 m <sup>3</sup> /3hr
OPERATING FLOW:	2,615,038 m <sup>3</sup> /3hr
EQUIPMENT WEIGHT:	12,000 kg

ELEVATION VIEW / FLOW INTO PAPER  
LOOKING NORTH (50HTA01AA200)  
LOOKING NORTH (60HTA02AA200)

ECN N-M-0097

NO	DATE	DESCRIPTION	BY	CHKD	APPD
1	23/SEP/20	REVISED AS PER ECN N-M-0097	SH	SH	ES
0	26/OCT/18	ISSUED FOR CONSTRUCTION	SH	SH	ES

OWNER: **PT. Bhumi Jati Power**

PROJECT TITLE: **TANJUNG JATI B EXPANSION (JAWA-4) COAL FIRED STEAM POWER PLANT 2 x 1,000 MW**

OWNER'S ENGINEER: **PÖYRY**

EPC CONTRACTORS: **Sumitomo Corporation**  
**PT. Wasa Mitra Engineering**  
**AvantPower Japan Ltd.**

PROJECT DRAWING NO.: **TJB56-L3-OFF-C-HTA-M-DRD-0700** REV. **1**

DESCRIPTION: **IDF OUTLET DAMPER 7350 X 5500 GAS PATH**

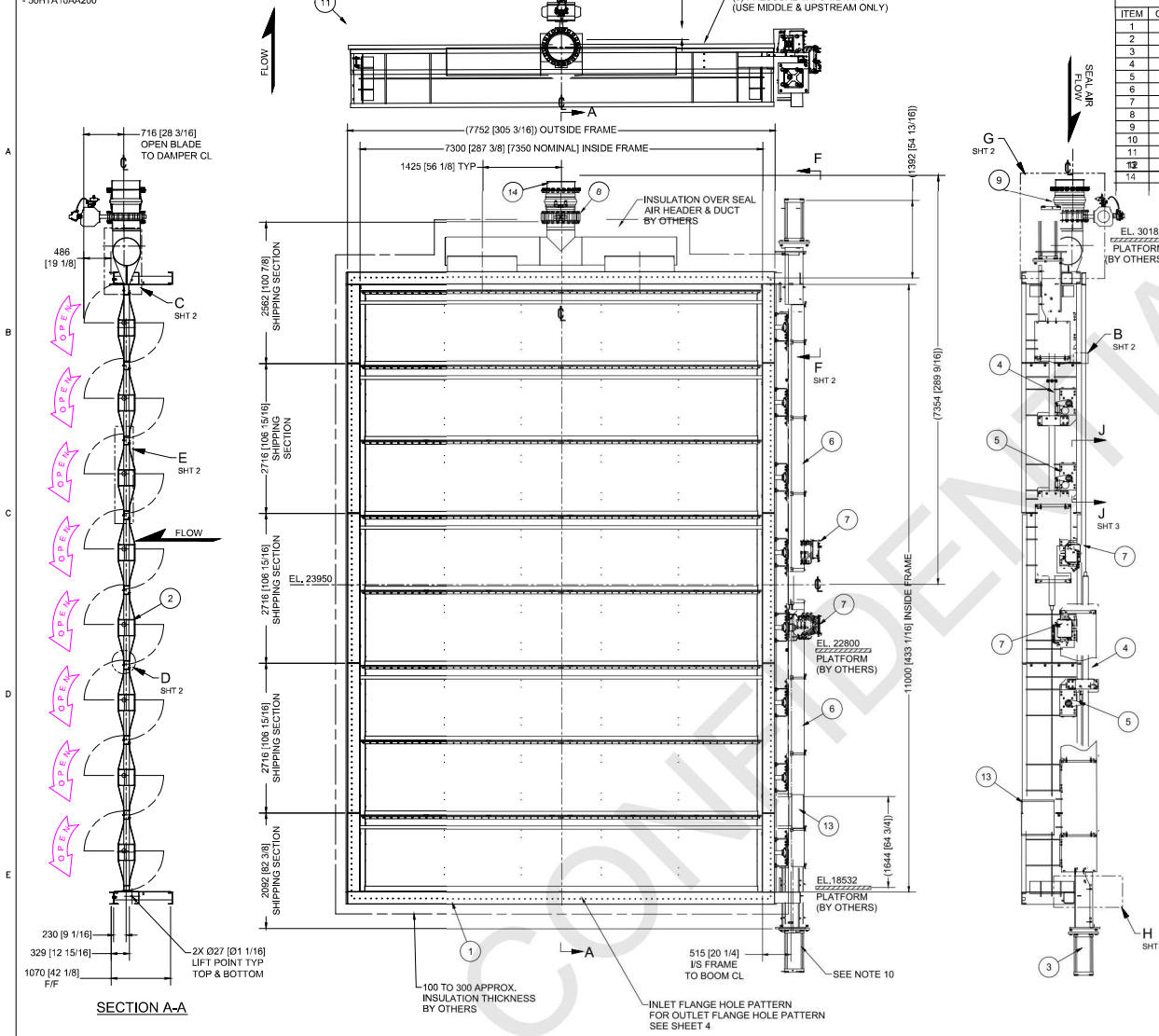
APPRO/ENGR	MDK	BY	EES	UNITS	VIEW
CHKO	LFP	DO/MM/YY	23/SEP/20	MM/M	ISOMETRIC

EPC LOTS SUB-CONTRACTOR: **BLACK & VEATCH** (Seawater FGD System) SPEC NO. 179956.65.3214  
**HAMON Air Quality System** SPEC NO. C1529530-101-440-4001

SHEET NO. **1** OF **4** REV. **1**

Uncontrolled when printed or downloaded. Verify that this is the correct version before use. 2815-101  
Reproduction of part or all the contents of the document is prohibited without written permission from P. Bhumi Jepara Service

EQUIPMENT KKS NO.  
- 50HTA10AA200



ITEM	QTY	DESCRIPTION	MATERIAL	DESIGNATION	MATERIAL LIST DESCRIPTION
1	1	FRAME ASSEMBLY	SEE DATA SHEET		ASSEMBLY
2	1	BLADE ASSEMBLY	SEE DATA SHEET		IW 17-4PH SS SHAFTS
3	2	ACTUATOR ASSEMBLY	PNEUMATIC	ON-OFF	ASSEMBLY, SEE NOTE 6
4	2	DRIVE TUBE ASSEMBLY	CS		
5	8	TOGGLE DRIVE ARRANGEMENT			ASSEMBLY
6	2	DRIVE LINKAGE COVER	CS		EXPANDED METAL ASSEMBLY
7	2	LIMIT SWITCH ASSEMBLY			ASSEMBLY, SEE NOTE 3
8	1	SEAL AIR DAMPER	PNEUMATIC	DN500	ASSEMBLY, DRY DUTY
9	1	EXPANSION JOINT	TEXTILE	DN500	
10	-	ITEM NOT USED			
11	1	COMPANION FLANGE	CS	C220x79	WELDMENT
12	1	ACTUATOR CONTROL BOX	CS	600 x 600 x 210	BACHMANN INDUSTRIES STANDARD
14	1	COUNTER FLANGE, SEAL AIR	CS	DN500	WELDMENT

- NOTES:
- ALL DIMENSIONS ARE IN MILLIMETERS (INCHES), UNLESS NOTED.
  - QUANTITIES SHOWN IN BOM FOR (1) DAMPER, TOTAL OF ONE (1) DAMPER REQUIRED.
  - ONE LIMIT ASSEMBLY PER ACTUATOR WITH 3 OPEN AND 3 CLOSED SWITCHES.
  - DAMPER FRAME SHIPPED IN FIVE (5) SECTIONS AS SHOWN. ACTUATOR ASSEMBLY, SEAL AIR DAMPER AND LINKAGE COVERS SHIPPED SEPARATELY.
  - COATING SYSTEM AS PER DOCUMENT C1529530-101-990-2005.
  - ACTUATOR ASSEMBLY: DUAL PNEUMATIC LINEAR ACTUATOR FOR ON-OFF DUTY DAMPER FAIL POSITION ON LOSS OF AIR PRESSURE OR SIGNAL: CLOSED W/ AIR RECEIVER STROKE TIME, OPEN AND CLOSE: 15-60 SEC. (ADJUSTABLE)
  - MATERIAL LIST C276 REPRESENTS A FAMILY OF MATERIALS THAT CAN BE USED INTERCHANGEABLY, INCLUDING ALLOY C276, DN 2.4819, ENCrMo-4, UNS N10276.
  - MATERIAL LIST CS REPRESENTS A FAMILY OF MATERIALS THAT CAN BE USED INTERCHANGEABLY, INCLUDING ASTM A-36, ASTM A-283EN 10225 S235, JS G3101 S540, GB/T 700-1988-Q235B.
  - BLADE LOCKING DEVICE FOR FULLY OPEN AND FULLY CLOSED DAMPER INCLUDED.
  - NO PERMANENT ACCESS NEEDED FOR PNEUMATIC CYLINDER.
    - a. THE CYLINDER HAS NO MAINTENANCE ITEMS.
    - b. A MAN-LIFT OR STAGING WILL BE REQUIRED FOR INSTALLATION OF THE CYLINDER.

**BACHMANN INDUSTRIES, INC**  
 416 LEWISTON SUCTION ROAD AUBURN, MAINE 04213 USA  
 PHONE: +1-207-784-1903 FAX: +1-207-784-1904

CUSTOMER/SITE: **HAMON / TANJUNG JATI B**  
 CUST P.O./TAG NO: **2101456477 / 50HTA10AA200**  
 SALES ORDER/ ITEM NO.: **SO-281500**  
 DESCRIPTION: **FGD INLET DAMPER**  
 DATE MFG. MO/ YR: **04/2018**  
[www.bachmann.us](http://www.bachmann.us)

DETAIL ITEM 12

DESIGN DATA	
DESIGN TEMPERATURE:	200° C
OPERATING TEMPERATURE:	155° C
AMBIENT TEMPERATURE:	22° - 35° C
MECHANICAL DESIGN PRESSURE:	75,4 mbar
NORMAL OPERATING PRESSURE:	79,4 mbar
DIFFERENTIAL PRESSURE:	5 mbar
PRESSURE LOSS @ FULL OPEN:	0,31 mbar
DESIGN FLOW:	5,230,076 m <sup>3</sup> /hr
OPERATING FLOW:	5,230,076 m <sup>3</sup> /hr
EQUIPMENT WEIGHT:	21,500 kg

ELEVATION VIEW / FLOW INTO PAPER  
LOOKING EAST

ECN N-M-0097

NOTES:  
 ECN-ENGINEERING CHANGE NOTICE PROCESS IS AN INTERNAL LOT 3 PROCESS AND THE ECN NUMBER (ECN N-M-0097) IS PROVIDED TO TRACK THE CHANGES IN THIS DOCUMENT AS CLOUDED IN THIS DRAWING.

NO	DD/MM/YY	REVISIONS AND RECORD OF ISSUE	BY	DESCRIP	APPRO
1	23/SEP/20	REVISED AS PER ECN N-M-0097	SH	SH	ES ES
0	26/OCT/18	ISSUED FOR CONSTRUCTION	SH	SH	ES ES

OWNER: **PT. Bhumijati Power**

PROJECT TITLE: **TANJUNG JATI B EXPANSION (JAWA-1) COAL FIRED STEAM POWER PLANT 2 x 1,000 MW**

OWNER'S ENGINEER: **PÖYRY**

EPC CONTRACTORS: **Sumitomo Corporation**  
**PT. Wasa Mitra Engineering**  
**AvantPower Japan Ltd.**

PROJECT DRAWING NO.: **TJB56-L3-OFF-C-HTA-M-DRD-0708** REV: **1**

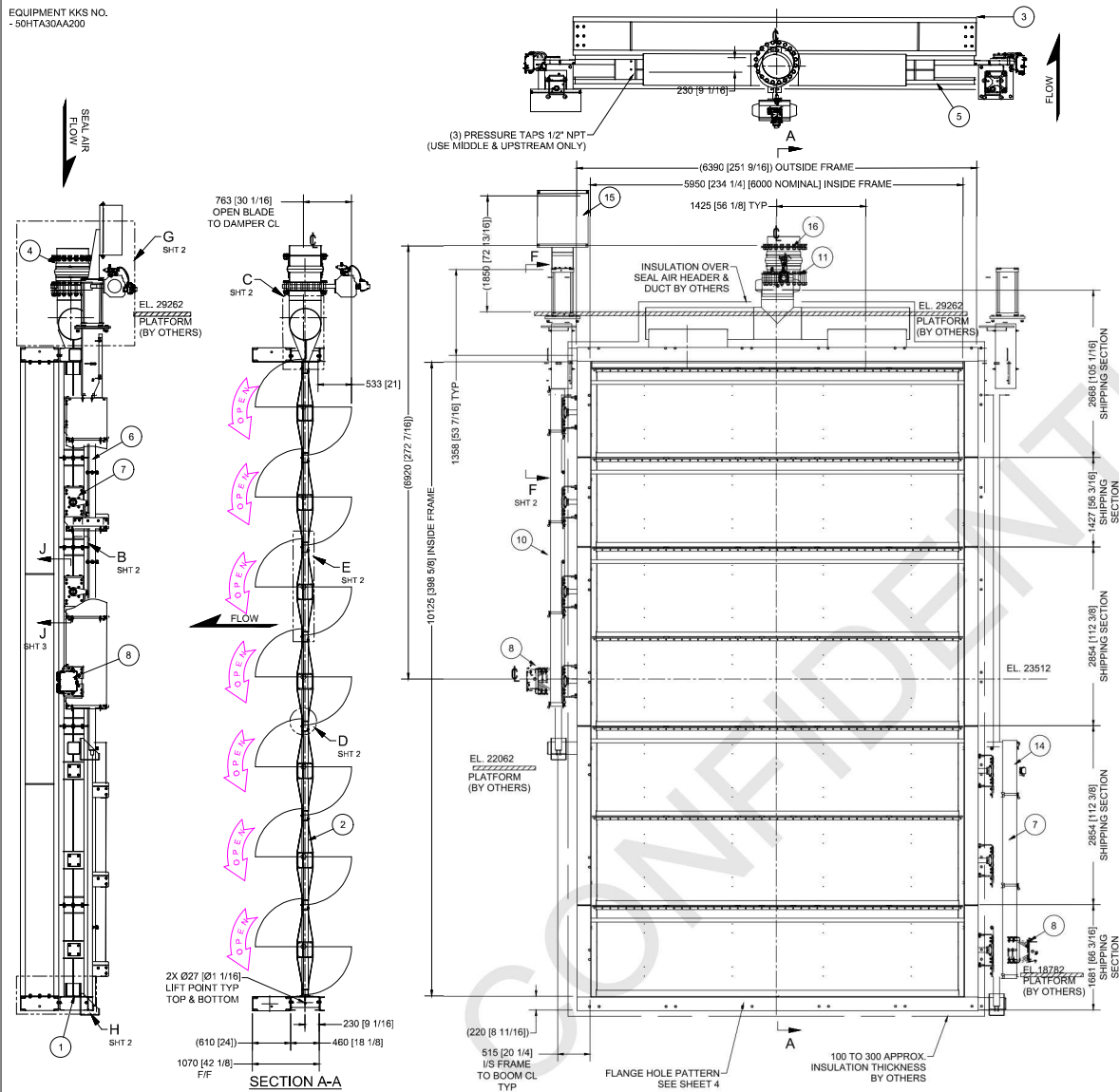
APPRO/ENGR	MDK	BY	SAH	UNITS	VIEW
CHKD	EES	DO/NUM/YY	23/SEP/20	MM/M	ASSEMBLY

EPC LOT3 SUB-CONTRACTOR: **BLACK & VEATCH**  
 Spec No. 179956.65.3214

EPC LOT3 SUB-CONTRACTOR DRAWING NO.: **C1529530-151-440-4007**

SHEET NO. **1** OF **4** REV. **1**

EQUIPMENT KKS NO.  
- 50HTA30AA200



ITEM		QTY	DESCRIPTION	MATERIAL	DESIGNATION	MATERIAL LIST DESCRIPTION
1	1	1	FRAME ASSEMBLY	SEE DATA SHEET		ASSEMBLY
2	1	1	BLADE ASSEMBLY	SEE DATA SHEET		W/ 17-4PH SS SHAFTS
3	1	1	DUCT SPOOL	SEE DATA SHEET		ASSEMBLY
4	1	1	EXPANSION JOINT	TEXTILE	DN500	ASSEMBLY
5	1	1	COMPANION FLANGE	CS	C220x79	WELDMENT
6	2	2	DRIVE TUBE ASSEMBLY	CS		ASSEMBLY
7	7	7	TOGGLE DRIVE ARRANGEMENT			ASSEMBLY
8	2	2	LIMIT SWITCH ASSEMBLY			ASSEMBLY, SEE NOTE 3
9	-	-	ITEM NOT USED			
10	1	1	DRIVE/LINKAGE COVER	CS		EXPANDED METAL ASSEMBLY
11	1	1	SEAL AIR DAMPER	PNEUMATIC	DN500	ASSEMBLY, DRY DUTY
12	1	1	ID TAG	SS		BACHMANN INDUSTRIES STANDARD
13	2	2	ACTUATOR ASSEMBLY	PNEUMATIC	ON-OFF	ASSEMBLY, SEE NOTE 6
14	1	1	POSITIONER			ASSEMBLY
15	1	1	ACTUATOR CONTROL BOX	SS	800 x 800 x 300	ASSEMBLY
16	1	1	COUNTER FLANGE, SEAL AIR	CS	DN500	WELDMENT

NOTES:

- ALL DIMENSIONS ARE IN MILLIMETERS (INCHES), UNLESS NOTED.
- QUANTITIES SHOWN IN BOM FOR (1) DAMPER, TOTAL OF ONE (1) DAMPER REQUIRED.
- ONE LIMIT SWITCH ASSEMBLY PER ACTUATOR WITH 3 OPEN AND 3 CLOSED SWITCHES.
- DAMPER FRAME SHIPPED IN FIVE (5) SECTIONS AS SHOWN. ACTUATOR ASSEMBLY, SEAL AIR DAMPER AND LINKAGE COVERS SHIPPED SEPARATELY.
- COATING SYSTEM AS PER DOCUMENT C1529530-101-990-2005.
- ACTUATOR ASSEMBLY: DUAL PNEUMATIC LINEAR ACTUATOR. TOP CYLINDER FOR ON/OFF DUTY DRIVING FOUR (4) TOP BLADES AND BOTTOM CYLINDER FOR MODULATION DUTY DRIVING THREE (3) BOTTOM BLADES. DAMPER FAIL POSITION ON LOSS OF AIR PRESSURE OR SIGNAL: OPEN W/ AIR RECEIVER. STROKE TIME: ON-OFF: OPEN: <= 15 SEC. (ADJUSTABLE). STROKE TIME: ON-OFF: CLOSED: 30-60 SEC. (ADJUSTABLE). STROKE TIME: MODULATION: 30-60 SEC. (ADJUSTABLE).
- MATERIAL LIST C276 REPRESENTS A FAMILY OF MATERIALS THAT CAN BE USED INTERCHANGEABLY, INCLUDING ALLOY C276, DIN 2.4819, EN1C/Mo-4, UNS N10276.
- MATERIAL LIST CS REPRESENTS A FAMILY OF MATERIALS THAT CAN BE USED INTERCHANGEABLY, INCLUDING ASTM A-36, ASTM A-283EN 10025 S235, JIS G3101 SS400, GB/T 700-1988-Q235B.
- BLADE LOCKING DEVICE FOR FULLY OPEN AND FULLY CLOSED DAMPER INCLUDED.

**BACHMANN INDUSTRIES, INC.**  
416 LEWISTON JUNCTION ROAD ALBURN, MAINE 04210 USA  
PHONE: +1-207-784-1903 FAX: +1-207-784-1904

CUSTOMER/SITE: **SIAMON / TANJUNG JATI B**  
CUST. P.O./TAG NO.: **1101458477 / 50HTA30AA200**  
SALES ORDER/ ITEM NO.: **SC-281500**  
DESCRIPTION: **FGD BYPASS DAMPER**  
DATE MFG. MO/ YR: **10/2018**

www.bachmannusa.com

DETAIL ITEM 14

NOTES:  
ECN-ENGINEERING CHANGE NOTICE PROCESS IS AN INTERNAL LOT 3 PROCESS AND THE ECN NUMBER (ECN N-M-0097) IS PROVIDED TO TRACK THE CHANGES IN THIS DOCUMENT AS CLOUDED IN THIS DRAWING.

ECN N-M-0097

DESIGN DATA	
DESIGN TEMPERATURE:	200° C
OPERATING TEMPERATURE:	155° C
AMBIENT TEMPERATURE:	22° - 35° C
MECHANICAL DESIGN PRESSURE:	79.4 mbar
NORMAL OPERATING PRESSURE:	79.4 mbar
DIFFERENTIAL PRESSURE:	32 mbar
PRESSURE LOSS @ FULL OPEN:	0.67 mbar
DESIGN FLOW:	5,230,076 m <sup>3</sup> /hr
OPERATING FLOW:	5,230,076 m <sup>3</sup> /hr
EQUIPMENT WEIGHT:	19,500 kg

ELEVATION VIEW / FLOW INTO PAPER  
LOOKING NORTH

Uncontrolled when printed or downloaded. Verify that this is the correct version before use.

Reproduction of part or all the contents of the document is prohibited without written permission from PT. Bhumi Jepara Service

NO	DD/MM/YY	REVISIONS AND RECORD OF ISSUE	BY	CHKD	DATE	DESCRIPTION
1	23/SEP/20	REVISED AS PER ECN N-M-0097	SH	SH	ES	ES
0	26/OCT/18	ISSUED FOR CONSTRUCTION	SH	SH	ES	ES

OWNER: **PT. Bhumi Jati Power**

PROJECT TITLE: **TANJUNG JATI B EXPANSION (JAWA-4) COAL FIRED STEAM POWER PLANT 2 x 1,000 MW**

OWNER'S ENGINEER: **Pöyry**

EPC CONTRACTORS: **Sumitomo Corporation**  
**PT. Wata Mitra Engineering**  
**AvantPower Japan Ltd.**

PROJECT DRAWING NO.: **TJBS6-L3-OFF-U5-HTA-M-DRD-0709** REV. 1

APPD/ENGR: **MDK** BY: **EEES** UNITS: **VIEW**

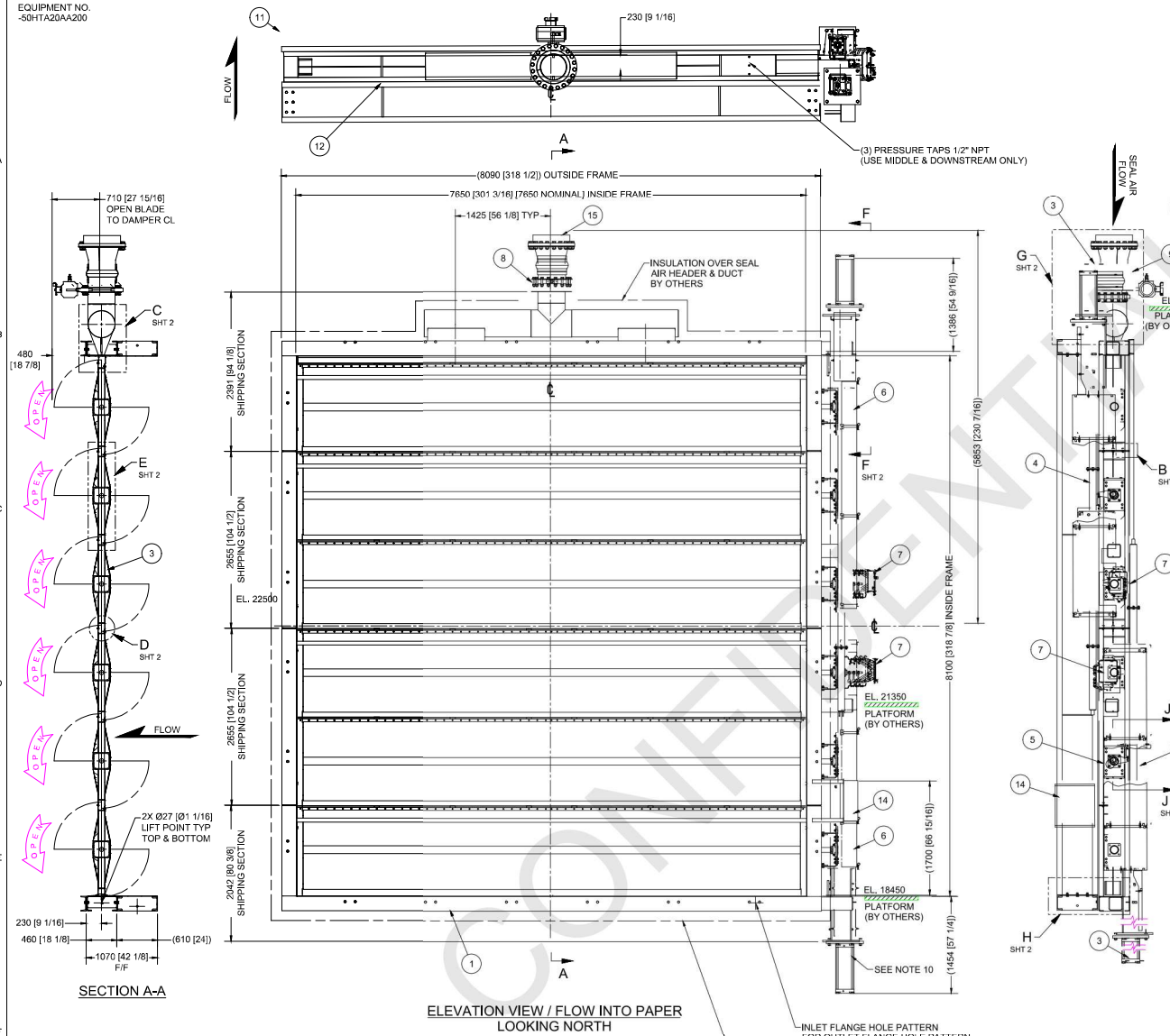
CHKD: **LFP** DO/DATE: **23/SEP/20** MM/YY: **MM/YY** (MM/YY)

EPC LOT3 SUB-CONTRACTOR: **BLACK & VEATCH** SPEC NAME: **Secwater FGD System** SPEC NO.: **179556.65.3214**

EPC LOT3 SUB-CONTRACTOR DRAWING NO.: **C1529530-151-440-4008**

SHEET NO.: **L OF 4** REV.: **1**

EQUIPMENT NO.  
-50HTA20AA200



		PARTS LIST			
ITEM	QTY	DESCRIPTION	MATERIAL	DESIGNATION	MATERIAL LIST DESCRIPTION
1	1	FRAME ASSEMBLY	SEE DATA SHEET		ASSEMBLY
2	1	BLADE ASSEMBLY	SEE DATA SHEET		W/ 17-4PH SS SHAFTS
3	2	ACTUATOR ASSEMBLY	PNEUMATIC	ON-FF	ASSEMBLY, SEE NOTE 6
4	2	DRIVE TUBE ASSEMBLY	CS		ASSEMBLY
5	6	TOGGLE DRIVE ARRANGEMENT			ASSEMBLY
6	2	DRIVE / LINKAGE COVER	CS		EXPANDED METAL ASSEMBLY
7	2	LIMIT SWITCH ASSEMBLY			ASSEMBLY, SEE NOTE 3
8	1	SEAL AIR DAMPER	PNEUMATIC	DN400	ASSEMBLY, DRY DUTY
9	1	EXPANSION JOINT	TEXTILE	DN400	ASSEMBLY
10	-	ITEM NOT USED			
11	1	COMPANION FLANGE	CS	C220x79	WELDMENT
12	1	DUCT SPOOL	SEE DATA SHEET		ASSEMBLY
13	1	ACTUATOR CONTROL BOX	SS	600 x 600 x 210	BACHMANN INDUSTRIES STANDARD
14	1	COUNTER FLANGE, SEAL AIR	CS	DN500	WELDMENT

- NOTES:
- ALL DIMENSIONS ARE IN MILLIMETERS, UNLESS NOTED.
  - QUANTITIES SHOWN IN BOM FOR (1) DAMPER, TOTAL OF ONE (1) DAMPER REQUIRED.
  - ONE LIMIT SWITCH ASSEMBLY PER ACTUATOR WITH 3 OPEN AND 3 CLOSED SWITCHES.
  - DAMPER FRAME SHIPPED IN FOUR (4) SECTIONS AS SHOWN. ACTUATOR ASSEMBLY, SEAL AIR DAMPER AND LINKAGE COVERS SHIPPED SEPARATELY.
  - COATING SYSTEM AS PER DOCUMENT C1529530-101-990-2005.
  - ACTUATOR ASSEMBLY: DUAL PNEUMATIC LINEAR ACTUATOR FOR ON-OFF DUTY DAMPER FAIL POSITION ON LOSS OF AIR PRESSURE OR SIGNAL. CLOSED W/ AIR RECEIVER. STROKE TIME, OPEN AND CLOSE: 15-60 SEC. (ADJUSTABLE)
  - MATERIAL LIST C276 REPRESENTS A FAMILY OF MATERIALS THAT CAN BE USED INTERCHANGEABLY, INCLUDING ALLOY C276, DIN 2.4819, EN10088-4, UNS N10276.
  - MATERIAL LIST CS REPRESENTS A FAMILY OF MATERIALS THAT CAN BE USED INTERCHANGEABLY, INCLUDING ASTM A-36, ASTM A-285B 10025 S235, JIS G3101 SS400, GB/T 700-1988-Q235B.
  - BLADE LOCKING DEVICE FOR FULLY OPEN AND FULLY CLOSED DAMPER INCLUDED.
  - NO PERMANENT ACCESS NEEDED FOR PNEUMATIC ACTUATOR.
    - THE CYLINDER HAS NO MAINTENANCE ITEMS.
    - A MAN-LIFT OR STAGING WILL BE REQUIRED FOR INSTALLATION OF THE CYLINDER.

**BACHMANN INDUSTRIES, INC**  
 118 KENNETH ST. #100, BOSTON, MA 02111 USA  
 TEL: 617-552-1111 FAX: 617-552-1112  
 WWW.BACHMANN-IND.COM

CUSTOMER/SITE: TANJUNG JATI B  
 CUST P.O./TAG NO: 80-281800  
 SALES ORDER/ W/HTA-20-DAMPER  
 DESCRIPTION: ACTUATOR  
 DATE MFG. MO/ YR: 08/2024

DETAIL ITEM 13

NOTES:  
 ECN-ENGINEERING CHANGE NOTICE  
 PROCESS IS AN  
 INTERNAL LOT 3 PROCESS AND THE  
 ECN NUMBER  
 (ECN N-M-0097) IS PROVIDED TO TRACK  
 THE CHANGES  
 IN THIS DOCUMENT AS CLOUDED IN  
 THIS DRAWING.

ECN N-M-0097

DESIGN DATA	
DESIGN TEMPERATURE:	200° C
OPERATING TEMPERATURE:	155° C
AMBIENT TEMPERATURE:	22° - 35° C
MECHANICAL DESIGN PRESSURE:	79.4 mbar
NORMAL OPERATING PRESSURE:	79.4 mbar
DIFFERENTIAL PRESSURE:	5 mbar
PRESSURE LOSS @ FULL OPEN:	0.22 mbar
DESIGN FLOW:	2,966,596 m <sup>3</sup> /hr
OPERATING FLOW:	2,966,596 m <sup>3</sup> /hr
EQUIPMENT WEIGHT:	20,000 kg

Uncontrolled when printed or downloaded. Verify that this is the correct version before use.  
 Reproduction of part or all the contents of the document is prohibited without written permission from P. P. Bhumi Jepara Service

NO	DATE	DESCRIPTION	BY	CHKD	APPD
1	23/SEP/20	REVISED AS PER ECN N-M-0097	SH	SH	ES
0	26/OCT/18	ISSUED FOR CONSTRUCTION	SH	SH	ES
		REVISIONS AND RECORD OF ISSUE	BY	DESCR	DATE

OWNER: **PT. Bhumi Jati Power**

PROJECT TITLE: **TANJUNG JATI B EXPANSION (JAWA-1) COAL FIRED STEAM POWER PLANT 2 x 1,000 MW**

OWNER'S ENGINEER: **PÖYRY**

EPC CONTRACTORS: **Sumitomo Corporation**  
**PT. Wasa Mitra Engineering**  
**AvantPower Japan Ltd.**

PROJECT DRAWING NO.: **TJB56-L3-OFF-C-HTA-M-DRD-0710** REV: **1**

FGD OUTLET DAMPER  
 7700 X 8100 GAS PATH

APPD/ENGR	MDK	BY	SAH	UNITS	VIEW
CHKD	EES	DO/NUM/YY	23/SEP/20	MM/M	ASSEMBLY

EPC LOT3 SUB-CONTRACTOR: **BLACK & VEATCH**  
 Separator FGD System  
 SPEC NAME: **1799565.65.3214**  
 SPEC NO.:

EPC LOT3 SUB-CONTRACTOR DRAWING NO.: **C1529530-151-440-4009**  
 SHEET NO. **1** OF **4** REV. **1**