



Chapter 4-1

Forced Draft Fan

Contact Address

For any question or any clarification required, please do not hesitate to contact Mitsubishi Heavy Industries, Ltd. (MHI) through the following address.

Mitsubishi Heavy Industries, Ltd.

Energy Transition & Power Headquarters, Energy Systems,

Steam Power Maintenance Innovation Business Division,

Nagasaki Solution Business Department, Overseas Business Group C,

1-1, Akunoura Machi, Nagasaki 850-8610.

Japan.

Tel. No: +81-80-9938-0035

Working Hours: 08.30 hrs. to 17.30 hrs. JPT (Except on Saturdays, Sundays and Holidays)

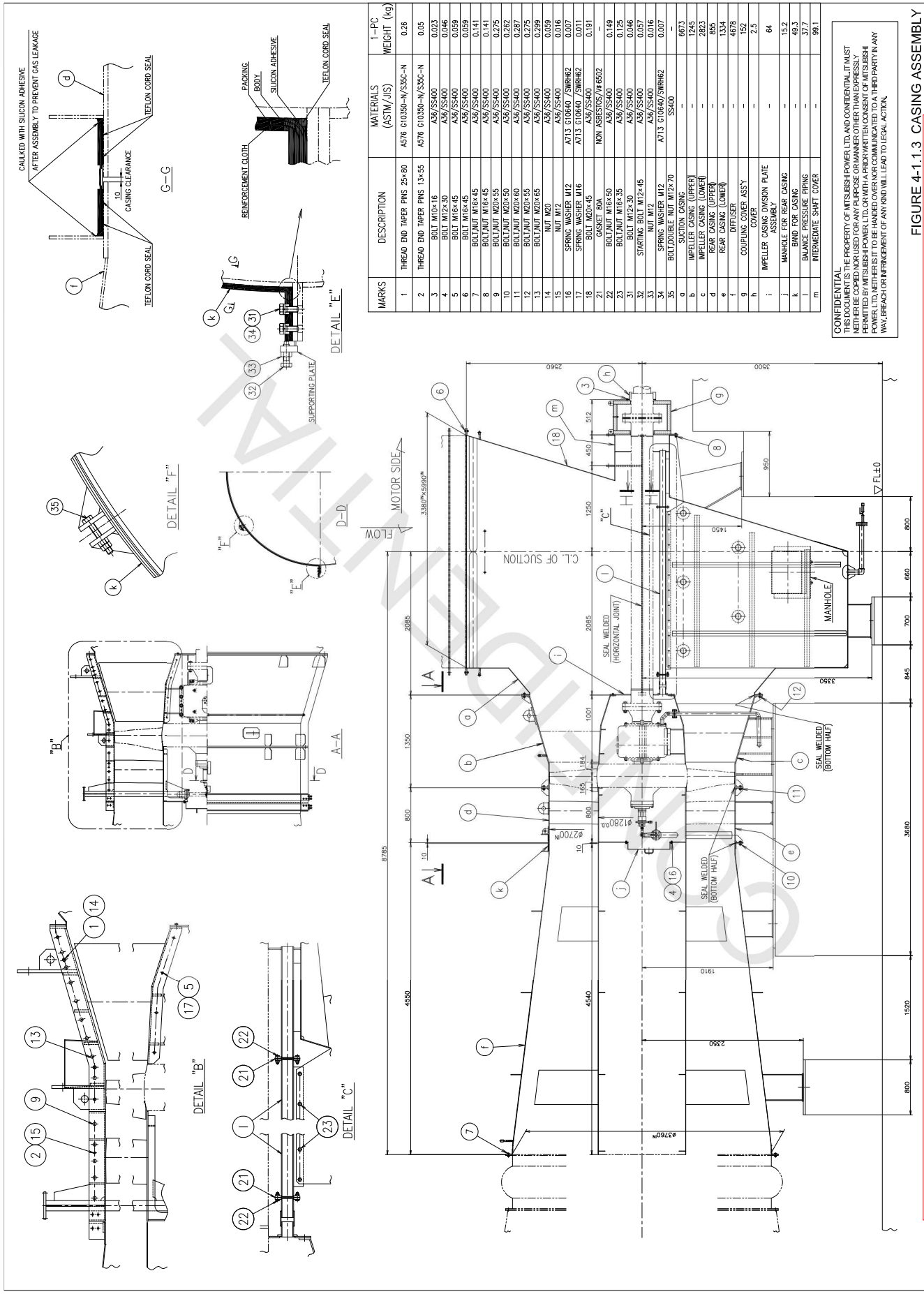


FIGURE 4-1-1.3 CASING ASSEMBLY

Uncontrolled when printed or downloaded. Verify that this is the correct version before use.
 Reproduction of part or all the contents of the document is prohibited without written permission from PT. Bhumi Jepara Service

Table A6-1
Casing Assembly Consumables

NOTE

- Remark ※ : Parts to be replaced at each regular inspection.
- Not Remark ※ : Replace with a new one depending on the condition.
- "Order Q'ty" shows parts quantity for two fans.
- (Quantity required normal maintenance.)

EQUIPMENT No.	MARKS	DESCRIPTION	PART NO	1-PIECE WEIGHT (kg)	REMARK	ORDER Q'TY	DELIVERY TIME (Month)	REPLACEMENT SCHEDULE (Year)
	1	THRES D END TAPER PINS 25 × 80	FIG-1-①	0.26		8		
	2	THRES D END TAPER PINS 13 × 55	FIG-1-②	0.05		4		
	3	BOLT M10 × 16	FIG-1-③	0.023		18		
	4	BOLT M12 × 30	FIG-1-④	0.046		24		
	5	BOLT M16 × 45	FIG-1-⑤	0.059		16		
	6	BOLT M16 × 45	FIG-1-⑥	0.059		40		
	7	BOLT,NUT M16 × 45	FIG-1-⑦	0.141		324		
	8	BOLT,NUT M16 × 45	FIG-1-⑧	0.141		200		
	9	BOLT,NUT M20 × 55	FIG-1-⑨	0.275		20		
	10	BOLT,NUT M20 × 50	FIG-1-⑩	0.262		76		
	11	BOLT,NUT M20 × 60	FIG-1-⑪	0.287		152		
	12	BOLT,NUT M20 × 55	FIG-1-⑫	0.275		176		
	13	BOLT,NUT M20 × 65	FIG-1-⑬	0.299		32		
	14	NUT M20	FIG-1-⑭	0.059		8		
	15	NUT M12	FIG-1-⑮	0.016		4		
	16	SPRING WASHER M12	FIG-1-⑯	0.007	※	24	4	during fan overhaul
	17	SPRING WASHER M16	FIG-1-⑰	0.011	※	16	4	during fan overhaul
	18	BOLT M20 × 45	FIG-1-⑱	0.191		8		
	19	NAME PLATE t1.6 (FOR A)	FIG-1-⑲	0.78		1		
	20	NAME PLATE t1.6 (FOR B)	FIG-1-⑳	0.78		1		
	21	CAUTION PLATE t1.6	FIG-1-㉑	0.38		2		
	22	SCREW RIVETS #4	FIG-1-㉒	0.001		20		
	23	NAME PLATE t1.6 (FOR A)	FIG-1-㉓	0.02		1		
	24	NAME PLATE t1.6 (FOR B)	FIG-1-㉔	0.02		1		
	25	SEAL PACKING	FIG-1-㉕	—	※	2	4	during fan overhaul
	26	GASKET 80A	FIG-1-㉖	—	※	2	4	during fan overhaul
	27	GASKET 80A	FIG-1-㉗	—	※	2	4	during fan overhaul
	a	SUCTION CASING (FOR A)	FIG-1-㉘	6673		1		
	b	SUCTION CASING (FOR B)	FIG-1-㉙	6673		1		
	c	IMPELLER CASING (UPPER) (FOR A)	FIG-1-㉚	1245		1		
	d	IMPELLER CASING (UPPER) (FOR B)	FIG-1-㉛	1245		1		
	e	IMPELLER CASING (LOWER) (FOR A)	FIG-1-㉜	2823		1		
	f	IMPELLER CASING (LOWER) (FOR B)	FIG-1-㉝	2823		1		
	g	REAR CASING (UPPER)	FIG-1-㉞	855		2		
	h	REAR CASING (LOWER) (FOR A)	FIG-1-㉟	1334		1		
	i	REAR CASING (LOWER) (FOR B)	FIG-1-㊱	1334		1		
	j	DIFFUSER	FIG-1-㊲	4678		2		
	k	COUPLING COVER ASS'Y	FIG-1-㊳	152		2		
	l	COVER	FIG-1-㊴	2.5		2		
	m	IMPELLER CASING DIVISION PLATE ASSEMBLY	FIG-1-㊵	64		2		

(A)
C
A
S
I
N
G
A
S
S
E
M
B
L
Y

CONFIDENTIAL

THIS DOCUMENT IS THE PROPERTY OF MITSUBISHI HITACHI POWER SYSTEMS, LTD. (MHPS) AND CONFIDENTIAL. IT MUST NEITHER BE COPIED NOR USED FOR ANY PURPOSE OR MANNER OTHER THAN EXPRESSLY PERMITTED BY MHPS OR WITH A PRIOR WRITTEN CONSENT OF MHPS NEITHER IS IT TO BE HANDED OVER NOR COMMUNICATED TO A THIRD PARTY IN ANY WAY. BREACH OR INFRINGEMENT OF ANY KIND WILL LEAD TO LEGAL ACTION.

Controlled when printed or downloaded. Verify that this is the correct version before use.
Reproduction of part or all the contents of the document is prohibited without written permission from PT. Bhumi Jebara Service

CONFIDENTIAL
 THIS DOCUMENT IS THE PROPERTY OF MITSUBISHI HITACHI POWER SYSTEMS, LTD. (MHPs) AND CONFIDENTIAL. IT MUST NOT BE COPIED NOR USED FOR ANY PURPOSE OR MANNER OTHER THAN EXPRESSLY PERMITTED BY MHPs OR WITH A PRIOR WRITTEN CONSENT OF MHPs NEITHER IS IT TO BE HANDED OVER NOR COMMUNICATED TO A THIRD PARTY IN ANY WAY. BREACH OR INFRINGEMENT OF ANY KIND WILL LEAD TO LEGAL ACTION.

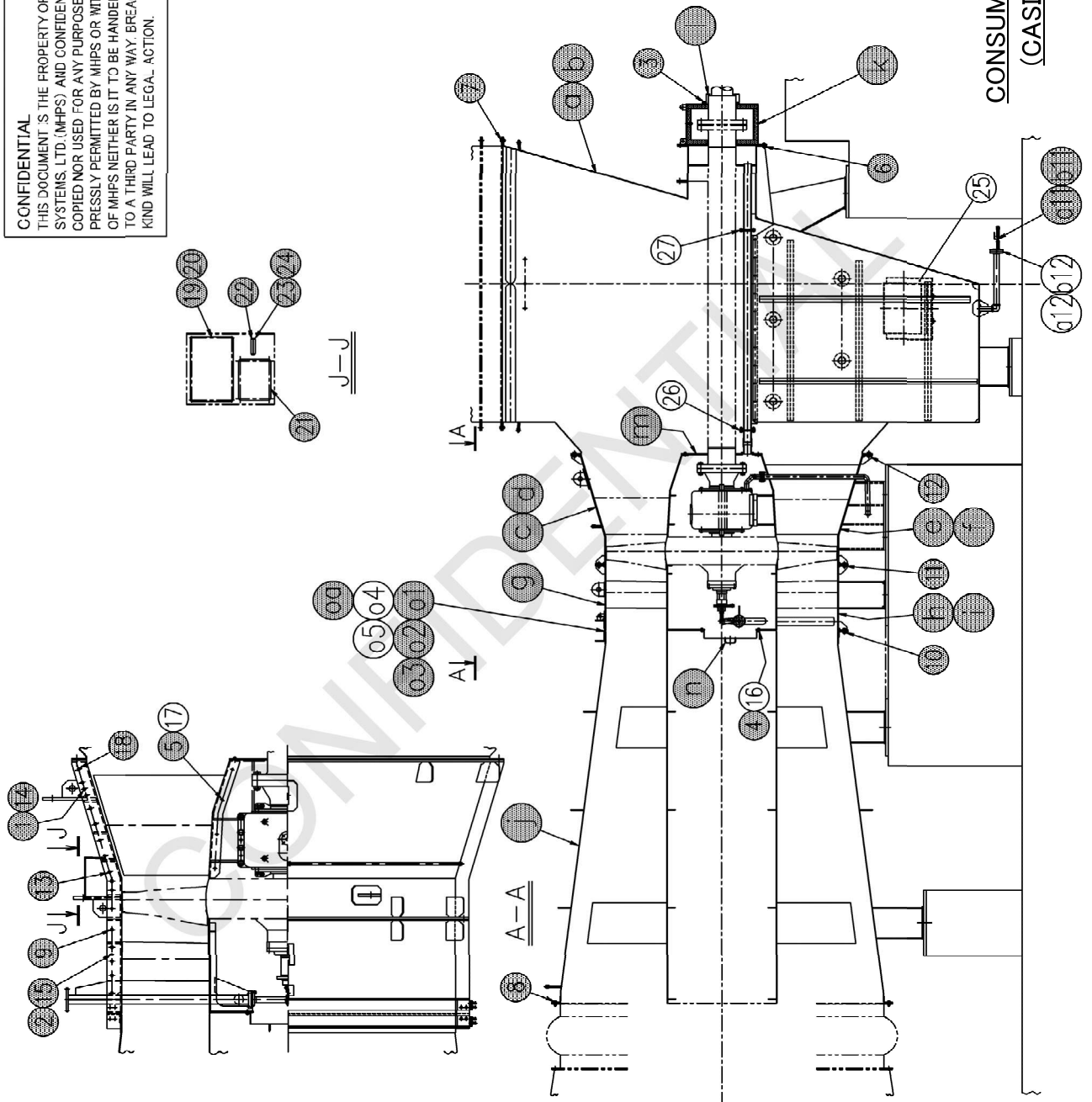


FIG--1

**CONSUMABLE PARTS LIST
 (CASING ASSEMBLY)**

Uncontrolled when printed or downloaded. Verify that this is the correct version before use.
 Reproduction of part or all the contents of the document is prohibited without written permission from PT. Bhumi Jepera Service