



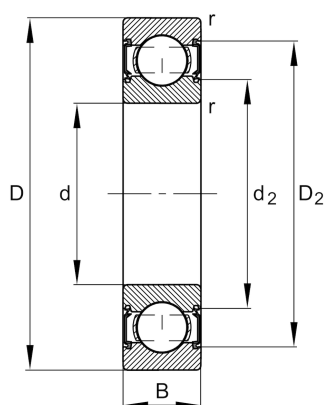
FAG

**6205-C-2HRS**

Deep groove ball bearing

Schaeffler ID:  
0621658600000Deep groove ball bearing 62...-C-2HRS,  
single row, Generation C, seals, steel  
sheet metal cage

## Technical information

**Main Dimensions & Performance Data**

d	25 mm	Bore diameter
D	52 mm	Outside diameter
B	15 mm	Width
$C_r$	15,900 N	Basic dynamic load rating, radial
$C_{0r}$	7,800 N	Basic static load rating, radial
$C_{ur}$	530 N	Fatigue load limit, radial
$n_G$	12,200 1/min	Limiting speed
	0.125 kg	Weight

**Dimensions**

$r_{min}$	1 mm	Minimum chamfer dimension
$D_2$	46.4 mm	Caliber diameter outer ring
$d_2$	31.4 mm	Caliber diameter inner ring

**Mounting dimensions**

$d_{amin}$	30.6 mm	Minimum diameter shaft shoulder
$D_{amax}$	46.4 mm	Maximum diameter of housing shoulder
$r_{amax}$	1 mm	Maximum fillet radius

**Calculation factors**

$f_0$	13.8	Calculation factor
-------	------	--------------------

**Temperature range**

$T_{min}$	-20 °C	Operating temperature min.
$T_{max}$	110 °C	Operating temperature max.

