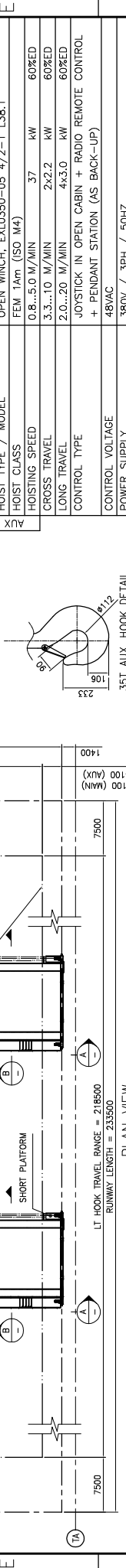
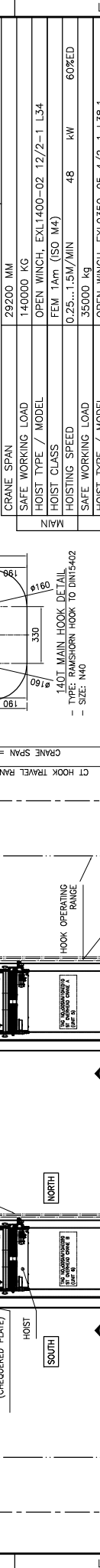
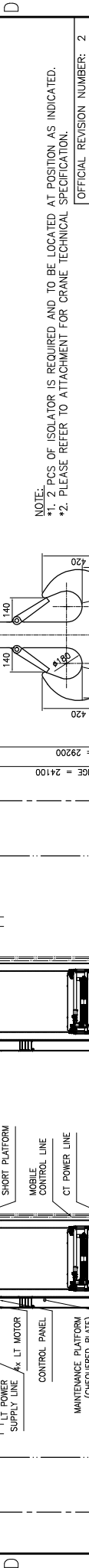
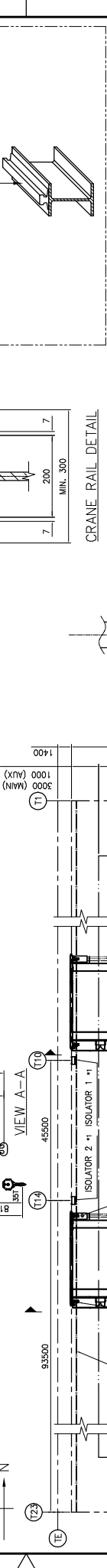
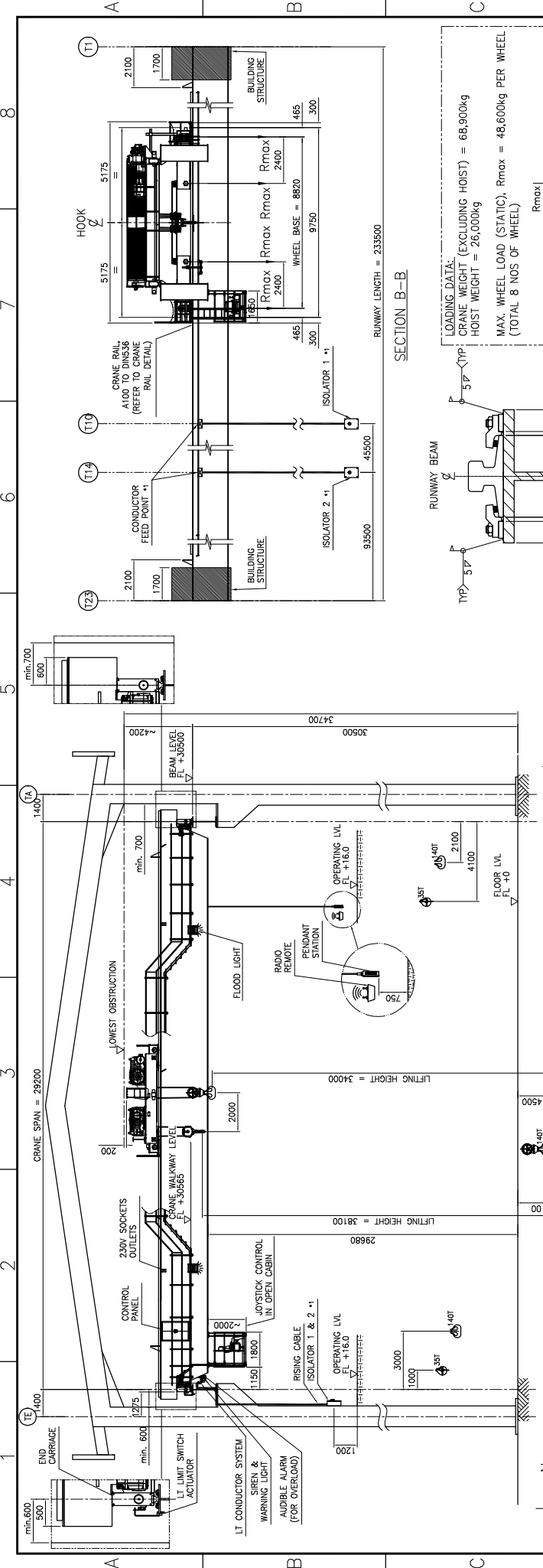


1 2 3 4 5 6 7 8



ALL DIMENSIONS IN MILLIMETRE UNLESS OTHERWISE SPECIFIED

REV. NO.	DATE	DETAILS	REV. BY	APPR. BY	SCALE	NTS	A3	DOC NO.:	DWG NO.:	TITLE:	CUSTOMER:	PROJECT:
1	05-08-2020	ISSUE FOR AS-BUILT	E.B.M	M.M.TUNG						TANJUNG JATI B EXPANSION (LAWA-4) COAL FIRED STEAM POWER PLANT 2x1000MW PROJECT		
2	22-08-2019	REVISED AS PER COMMENTS	E.B.M	M.M.TUNG								
3	13-06-2018	REVISED AS PER COMMENTS	E.B.M	M.M.TUNG								
4	30-01-2018	REVISED AS PER COMMENTS	E.B.M	M.M.TUNG								
5	22-01-2018	REVISED AS PER COMMENTS	E.B.M	M.M.TUNG								
6	21-12-2017	REVISED AS PER COMMENTS	E.B.M	M.M.TUNG								
7	20-12-2017	REVISED AS PER COMMENTS	E.B.M	M.M.TUNG								
8	19-12-2017	REVISED AS PER COMMENTS	E.B.M	M.M.TUNG								
9	13-12-2017	ISSUE FOR APPROVAL	E.B.M	M.M.TUNG								

OFFICIAL REVISION NUMBER: 2

CRANE SPAN	SAFE WORKING LOAD	HOIST TYPE / MODEL	HOIST CLASS	HOISTING SPEED	SAFE WORKING LOAD	HOIST TYPE / MODEL	HOIST CLASS	HOISTING SPEED	CROSS TRAVEL	LONG TRAVEL	CONTROL TYPE	CONTROL VOLTAGE	POWER SUPPLY	RUNWAY LENGTH	INSTALL LOCATION
29200 MM	140000 KG	OPEN WINCH, EXL1400-02 12/2-1 L34	FEM 1Am (ISO M4)	0.25...1.5M/MIN	48 kW	60%ED	OPEN WINCH, EXL0350-05 4/2-1 L38.1	FEM 1Am (ISO M4)	0.8...5.0 M/MIN	2x2.2 kW	60%ED	380V / 3PH / 50HZ	233500 mm	INDOOR	

NOTE:
 *1, 2 PCS OF ISOLATOR IS REQUIRED AND TO BE LOCATED AT POSITION AS INDICATED.
 *2, PLEASE REFER TO ATTACHMENT FOR CRANE TECHNICAL SPECIFICATION.

LOADING DATA:
 CRANE WEIGHT (EXCLUDING HOIST) = 68,900kg
 HOIST WEIGHT = 26,000kg
 MAX. WHEEL LOAD (STATIC), Rmax = 48,600kg PER WHEEL (TOTAL 8 NOS OF WHEEL)

CRANE RAIL DETAIL

140T MAIN HOOK DETAIL
 TYPE: RAMSHORN HOOK TO DIN15402
 SIZE: N40

35T ALUX HOOK DETAIL
 TYPE: SINGLE HOOK TO DIN15401
 SIZE: N10

EXCELLIFT

SCALE: NTS

PT. BHUMI JATI POWER

140/35T x 29.2m SPAN D.G.-E.O.T. CRANE
 OUTLINE DRAWING FOR ST OVERHEAD CRANE

REV. NO. DATE DETAILS REV. BY APPR. BY

1 1/1

FORM NO. 01-02

ATTACHMENT: TECHNICAL SPECIFICATIONS

ST OVERHEAD CRANE | 140/35T OVERHEAD CRANE

Qty:	2 nos.	
Crane classification:		
- Crane group:	A3 to BS466	
- Component group:	FEM 1Am / ISO M4	
Type:	Double Girder Electric Overhead Travelling Crane	
Safe working load:	Main hoist: 140 tonne Aux. hoist: 35 tonne	
Span:	29.2 m	
Height of Lift:	34/38.1 m	
Travelling length:	233.5 m	
Area classification:	Safe Area	
Ambient temperature:	maximum up to +40°C	
Power supply:	380V / 3 PH / 50Hz	
Control voltage:	48VAC (<i>step-down transformer included</i>)	
Control of crane:	Joystick Control in Open Cabin + Radio Remote Control (Joystick type) + Pendant Station (as back-up)	
Cross travel power supply:	Via festoon type flat cable system	
Long travel power supply:	Via conductor rail system	
<u>Working speeds and motor data</u>		
Hoisting (main):	0.25...1.5 m/min	48 kW
Hoisting (aux.):	0.8...5.0 m/min	37 kW
Cross travel:	3.3...10 m/min	2x2.2 kW
Long Travel:	2...20 m/min	4x3.0 kW
Class F tropicalised insulation of all motors.		
Motor brake:		
- Hoisting:	Electromagnetic disc brake	
- Cross and long travel:	Electromagnetic disc brake	
Hoist + trolley weight:	approx. 22,000 kg	
Crane assembly weight (without hoist):	approx. 68,900 kg	

Hoist Unit:

Hoist type:	Electric wire rope hoist with motorized double rail crab	
	<u>Main Hoist</u>	<u>Aux. Hoist</u>
Hoist model:	Open winch	Open winch
Components group:	FEM 1Am (M4)	FEM 1Am (M4)
Hook type:	Double hook	Single hook
Wire rope details:		

ATTACHMENT: TECHNICAL SPECIFICATIONS

ST OVERHEAD CRANE | 140/35T OVERHEAD CRANE

- Rope diameter:	Ø 25mm	Ø 20mm
- Material:	Bright steel fully lubricated	
- Tensile strength:	1960N/mm ²	1960N/mm ²
- Reeving:	12/2-1	4/2-1
- True vertical lift:	Yes	Yes
- Drum diameter:	Ø 850mm	Ø 710mm

Cross travel wheel details:

- Wheel diameter:	Ø400 mm (double flange wheel)
- Number of wheels:	8 nos.
- Material:	Spheroidal graphite cast iron, GGG70

End Carriages:

Construction:	Welded box section
Wheel base:	2400/4020/2400 mm

Long travel wheel details:

- Wheel diameter:	Ø 500mm
- Number of wheels:	8 nos.
- Material:	Spheroidal graphite cast iron, GGG70

Mounting of travel drive motor: Direct coupled

Type of shock absorber: Rubber buffer

Recommended crane rail: A100 to DIN536

Crane Girder:

Material:	Mild steel to BS EN S275
Type of construction:	Welded box
Deflection of girder:	< girder span / 1000
Connection to gantry leg:	Bolting

Standard Features:

- Frequency inverter control** for all motion with 5% of operating speed (with fan)
- Overload protection to prevent overloading of hoist
- Cumulative Load Controller: prevent total lifting on 140t hoist and 35t hoist will not exceed 140t.
- Temperature monitoring of motors by PTC thermistors including tripping device
- Hoist limit switch (gear-type limit switch) for highest and lowest hook position.
- Operating hour counter
- Safety latch on the hook
- IP55 for all motor and electrical components