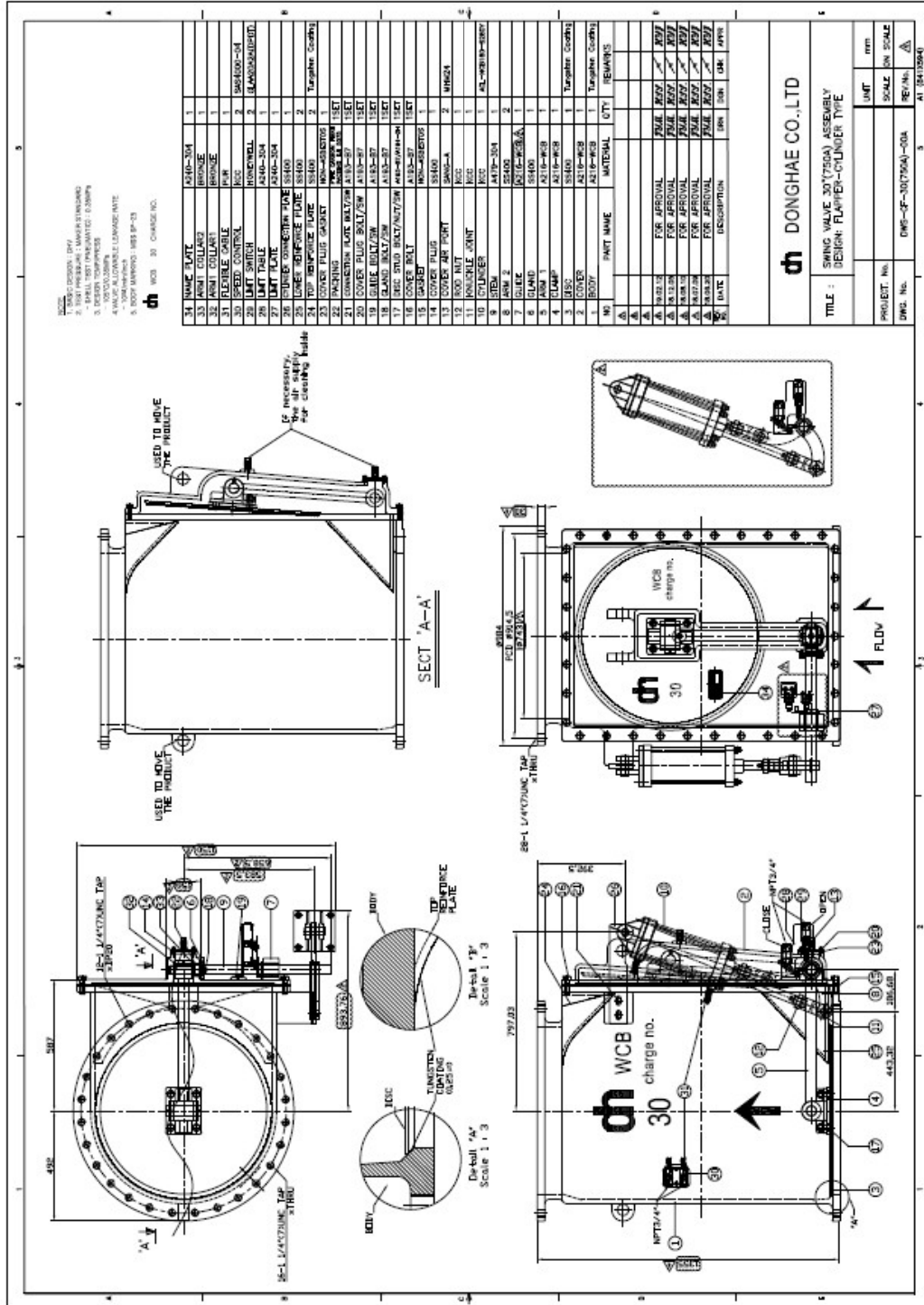


Annexed 1. Drawing (Project : Tanjung Jati B 5&6 Project)



Annexed 2.

Valve Data Sheet

(Project : Tanjung Jati B 5&6 Project)

G E N E R A L	VALVE NAME	SWING VALVE				
	TAG NUMBER	N/A				
	MANUFACTURER'S MODEL FIGURE NO.	DH-SW-FC				
	TYPE	SWING TYPE				
	PRESSURE RATING(ANSI STANDARD)	-				
	SIZE	DN750				
	FLANGE TO FLANGE DIMENSIONS(mm)	1355mm				
D E S I G N & S E R V I C E	QUANTITY(set)	36EA				
	LOCATION(IN DOOR, OUT DOOR)	OUT DOOR				
	FLUID	Air+Pulverized Coal				
	TEST BODY PRESSURE(MPa)	Pneumatic 0.35MPa				
	DESIGN TEMPERATURE(°C)	105°C				
	DESIGN FLOW RATE(t/h)	N/A				
	MAX. SHUT-OFF PRESSURE(bar)	0.2 bar				
	DELTA P AT DESIGN FLOW(Barg)	N/A				
	SIZE-CODE&STANDARD-RATING-FLANGE TYPE	30" AWWA CLASS D FF				
	LAYING LENGTH(mm)	1079mm				
	VELOCITY THRU THE VALVE(m/sec)	N/A				
	MATING PIPE SIZE, (mm)	DN750				
	WEIGHT(W/OPERATOR & ACC.)	1700kg				
M A T E R I A L S	BODY	A216-WCB + Tungsten coating				
	STEM	A479-304				
	DISC	S8400 + Tungsten coating				
	SEAT	A216-WCB + Tungsten coating				
	PACKING	PTFE CARBON FIBRE PACKING KJI 5075				
	BOLT/NUT	A193-B7/A194-2H				
O P E R A T O R	OPERATOR TYPE	CYLINDER(KCC Ø160x280ST)ACL-NCB160-8280Y				
	TORQUE FOR STEM	N/A				
	SOLENOID TYPE	N/A				
	SOV MANUFACTURER/FIG.NO.	N/A				
	VOLT/HERZE/PHASE/WIRE	N/A				
	CLOSING, OPEN TIME, Sec (MAX)	CLOSE : LESS THEN 3 SEC / OPEN : 5~7 SEC				
	FAIL POSITION	Fail lock				
	AIR UNIT	N/A				
	LIMIT SWITCHES(CLOSE,OPEN)	HONEYWELL / GLAA20A2A (DPDT)				
	POSITIONER TYPE	N/A				
A C C E S S O R Y	POSITION TRANSMITTER	N/A				
	JUNCTION BOX	N/A				
	SPEED CONTROL	KCC (SAS 4000-04)				
	SPECIAL REQUIREMENTS :					
1-1/4(7)UNCx120L Stud bolt(B7 for tap) & Nut(2H) & Washer						
1-1/4(7)UNCx150L Stud bolt(B7 for thru) & Nut(2H) & Washer						
					MP3 NO.	
3	2019. 02. 12	ISSUED BID.	Y. M. JO	S. S. HAM	PROJECT NO.	
REV	DATE	DESCRIPTION	PREPARED BY	APPROVED BY	DATA SHEET NO.	DHQR-7.3-201-150

DONGHAE CO.,LTD.