

**Hillmar**  
 Hillmar Industries Ltd.  
 7371 Vantage Way  
 Delta, BC V4G 1C9  
 P:604 946-7115 F:604 946-0329  
 www.hillmar.com info@hillmar.com

**RAIL CLAMP LHLE  
 CXHV-LH-300-600-ALL  
 O & M MANUAL  
 PARTS & SVC  
 ENGLISH**

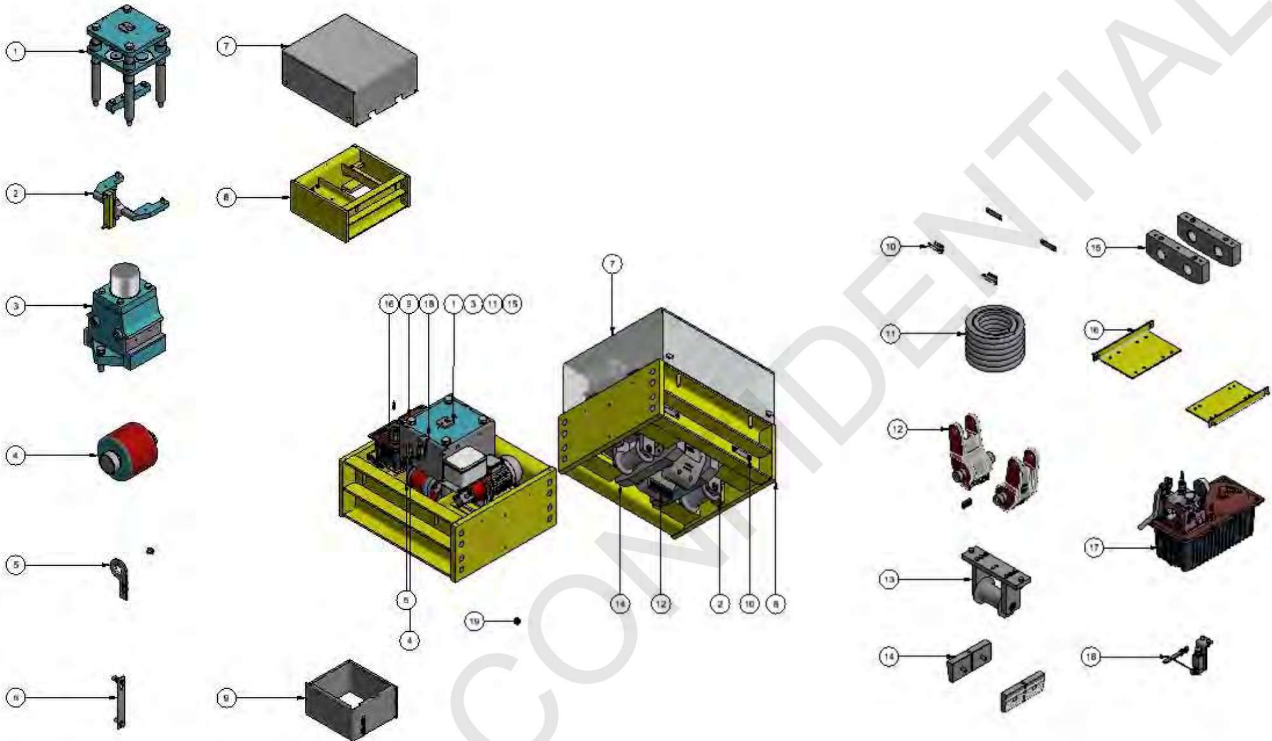
Sheet Number:	
Job Number:	
246-217-01854JB	
Form Number:	Rev:
711-111-52532	G
Document Package No.:	Rev:
200-112-62887	D

Company / Project Reference:

Date:  
22-JUL-16

Page:  
9 of 10

**5.2 GENERAL ASSEMBLY – TRUCK MOUNT**



ITEM	DESCRIPTION	QUANTITY
1	MECHANISM BASE	
2	TRUCK MOUNT FBK	
3	CYLINDER	
4	ROLLER ASSY	
5	ECCENTRIC PIN LOCK TOOL KIT	
6	LEVER RETRACTION KIT	
7	ENCLOSURE COVER 304SS	
7	ENCLOSURE COVER 316SS	
8	ENCLOSURE BASE	
9	SHROUD	
10	GREASE KIT TYPE A ST	
10	GREASE KIT TYPE A SS316	
10	GREASE KIT BUTTON HEAD ST	
10	GREASE KIT BUTTON HEAD ST	
11	SPRING KIT	
12	LEVER KIT	
13	GUIDE WHEEL ASSY	
14	CONNECTOR PLATE KIT	
15	WEDGE KIT	
16	HPT MOUNTING KIT	
17	HYDRAULIC POWER UNIT	
18	MECHANICAL SWITCH KIT	

C	BT	GENERAL REVISION	22APR15					
B	TM	UPSIDE DOWN RAIL CLAMP ADDED	16JUN14					
A	TM	ADDED TO THE BOTTOM SECTION	22JUL16					
Rev.	Apr. By	Reproduction of part or all the contents of the document is prohibited without written permission from PT. Bumi Japara Service					25JUL16	Date