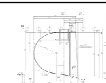

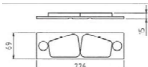
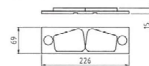

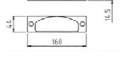


Item No.	Equipment Tag Number (KKS)									Spec No.	Equipment Name	Description of Spare Items	Manufacturer's Part Identification	Qty per two Units		Sketch	Cross Reference Drawing	Frequency of replacement	Remarks			
	Level 0 (Total Plant)	Level 1 (System Code)			Level 2 (Equipment Code)			Level 3 (Component Code)						Qty	(nr., pcs, set, etc)				(See Item 2.11 of Instrm Sht)	(See Item 2.12 of Instrm Sht)	Item No. of CDA	Qty difference from Qty of CDA
	G	F ₀	F ₁ F ₂ F ₃	F ₄	A ₁ A ₂	A ₃	A ₄	A ₅	B ₁ B ₂													
87										67.0402	Sprinkler Nozzle	for dust suppression	pcs	6		TJB56-L3-OFF-C-EAD-P-DGA-0875-0877,Item 9.11.40.42.44_model type:3/8 QJ+QG-SS-14W	Replace upon damage	New Item				
88										67.0402	Slewing pinion	for slew drive	pcs	2			Operating 100000 hours	New Item				
89										67.0402	Bearing of bucket wheel	23164CKKW33C	pcs	2			Operating 80000 hours	New Item				
90										67.0402	Bearing of bucket wheel	23144CKKW33C	pcs	2			Operating 80000 hours	New Item				
91										67.0402	bearing of long travel wheel	22320E (100*215*73)	pcs	4			Operating 80000 hours	New Item				
92										67.0402	circuit breaker	MS132-2.5	pcs	2			10000 operating cycles	New Item				
93										67.0402	circuit breaker	MS132-20	pcs	2			10000 operating cycles	New Item				
94										67.0402	circuit breaker	C14G16, 14*51-	pcs	2			Replace upon damage	New Item				
95										67.0402	Contact	16A/690V	pcs	2			10 million operating cycles	New Item				
96										67.0402	Contact	AF09-30-10-80	pcs	4			10 million operating cycles	New Item				
97										67.0402	Contact	AK09-30-10-80	pcs	4			10 million operating cycles	New Item				
98										67.0402	Contact	A30-30-10 (220VAC)	pcs	4			10 million operating cycles	New Item				
99										67.0402	Contact	A09-30-10 (220VAC)	pcs	6			10 million operating cycles	New Item				
100										67.0402	thermal relay	TA25DU-4.0M	pcs	4			10000 operating cycles	New Item				
101	0	0	EAD	2	AE	303	N/A	N/A	N/A	67.0402	thermal relay	TA25DU-19M (13-21A)	pcs	2			10000 operating cycles	New Item				
102										67.0402	Push Button with light	TA25DU-19M (13-21A)	pcs	2			10000 operating cycles	New Item				
103										67.0402	Push Button with light	MP1-11R+MCBH-00+MCB-10+ML-07R	pcs	1			Operating 50000 hours	New Item				
104										67.0402	Push Button with light	MP1-11R+MCBH-00+MCB-11+ML-07R	pcs	1			Operating 50000 hours	New Item				
105										67.0402	Push Button	MP1-10B+MCBH-00+MCB-10	pcs	4			Operating 50000 hours	New Item				
106										67.0402	Push Button with light	MP1-11G+MCBH-00+MCB-10+ML-07G	pcs	1			Operating 50000 hours	New Item				
107										67.0402	Push Button	MP1-10G+MCBH-00+MCB-01	pcs	3			Operating 50000 hours	New Item				
108	0	0	EAD	2	AE	304	N/A	N/A	N/A	67.0402	selection switch	M2SS2-10B+MCBH-00+MCB-10+MCB-01	pcs	2			Operating 50000 hours	New Item				
109										67.0402	selection switch	M3SS1-10B+MCBH-00+2*MCB-10	pcs	3			Operating 50000 hours	New Item				
110										67.0402	limit switch	Z4V7H32-11Y	pcs	2			1 million operating cycles	New Item				
111										67.0402	limit switch	TA09-12Y	pcs	1			1 million operating cycles	New Item				
112										67.0402	proximity switch	NCB50-FR-A2-P1	pcs	2			Replace as demand	New Item				
113										67.0402	intermediate relay(24VDC)	CR-MX024DC2L+CR-M2SF+CR-MH1	pcs	10			1 million operating cycles	New Item				
114										67.0402	intermediate relay(24VDC)	CR-M230AC4LG+CR-M4SS+CR-MH1	pcs	20			1 million operating cycles	New Item				
115										67.0402	Encoder	EVM58N-011ZR0BN-1416	pcs	1			40 billion rotary cycles	New Item				
										67.0402	Digital input module	1794-IB32	pcs	2			10 years	New Item				
										67.0402	Digital output module	1794-OB32P	pcs	1			10 years	New Item				
										67.0402	fluorescent lamp	TCV057/236	pcs	4			Replace as demand	New Item				
										67.0402	LED Tri-proof light	WT118C LED18 CW PSU 1600	pcs	4			Operating 50000 hours	New Item				
										67.0402	double direction pull cord switch SPS-2D	SPS-2D	sets	2		TJB56-L3-OFF-C-EAD-M-DGA-0326.0327	Replace as demand	New Item				
										67.0402	Bell no switch DB-100	DB-100	sets	2			Replace as demand	New Item				
										67.0402	Contact	A16-30-10 (220VAC)	pcs	6			10 million operating cycles	New Item				
										67.0402	fuse core	C14G10 (14*51, 10A690V)	pcs	2			Replace as demand	New Item				
										67.0402	fuse core	C14G4 (14*51, 4A690V)	pcs	2			Replace as demand	New Item				
										67.0402	fuse core	RT14-20-2A (10*36, 9S, AC690V, 100KA)	pcs	6			Replace as demand	New Item				
										67.0402	Indicator	CL2-823G	pcs	2			Operating 50000 hours	New Item				
										67.0402	Indicator	CL2-823R	pcs	2			Operating 50000 hours	New Item				
										67.0402	Indicator	CL2-823Y	pcs	2			Operating 50000 hours	New Item				
117											Coal Handling System -Ship Unloader											
118										67.0401	Bucket	SM490	2	set			Be decided by working condition	New Item				
119	0	0	EAA	10/20	AU	10/20	N/A	N/A	N/A	67.0401	Bucket Chain		50	pcs			More than 11500 hours	New Item				
120	0	0	EAA	10/20	AU	10/20	N/A	N/A	N/A	67.0401	Brake Lining for bucket elevator		2	set			upon damage	New Item				
121	0	0	EAA	10/20	AU	10/20	N/A	N/A	N/A	67.0401	Brake Lining for bucket elevator slewing		2	set			upon damage	New Item				
122	0	0	EAA	10/20	AU	5/6	N/A	N/A	N/A	67.0401	Brake Lining for boom slewing		4	set			upon damage	New Item				
123	0	0	EAA	10/20	AU	7	N/A	N/A	N/A	67.0401	Brake Lining for boom conveyor		1	set			upon damage	New Item				

CONTENTS

No.	Drawing Name	Page
1	BUCKET	4
2	BUCKET CHAIN	6
3-1	BRAKE LINING FOR BUCKET ELEVATOR	8
3-2	BRAKE LINING FOR BOOM SLEWING	8
3-3	BRAKE LINING FOR BOOM CONVEYER	8
4	BRAKE LINING FOR BUCKET ELEVATOR SLEWING	9
5	BRAKE LINING FOR CSU TRAVELLING (MOTOR END DISK BRAKE)	10
6	BRAKE SHOE FOR RAIL CLAMP	11
7	TIP FOR BELT CLEANER	12
8-1	HYDRAULIC UNIT FILTER ELEMENT FOR BOOM LUFFING	14
8-2	HYDRAULIC UNIT FILTER ELEMENT FOR DIGGING DEVICE	14
9	RUBBER FOR BOOM CONVEYER SKIRT	17

1. BUCKET

(NOTE)

DESIGNED	CHECKED	APPROVED
-	-	-

EDITION	DATE	DESIGN DEPT.		AGREEMENT	
	Jan. 17 2019	DRAWN	DESIGNED	CHECKED	APPROVED
FIRST					
LAST					

MASS (kg)	
MAIN STRUCT.	0
AUX. STRUCT.	0
MECH. PARTS.	0
PURCHASE	556
PIPE	0
OTHER	0
TOTAL THIS LIST	556
TOTAL / CRANE(S)	-

WORK No.	PROJECT	PURCHASER
BK1BA88	2500t/h CSU	
CLASSIFICATION	REV.	DRAWING No.
0009	0211	-
TITLE		
Bucket (Spare Parts)		

Total arrangements number = QTY:TOTAL x Arrangement(e) number x Crane(s)

Total arrangements number =

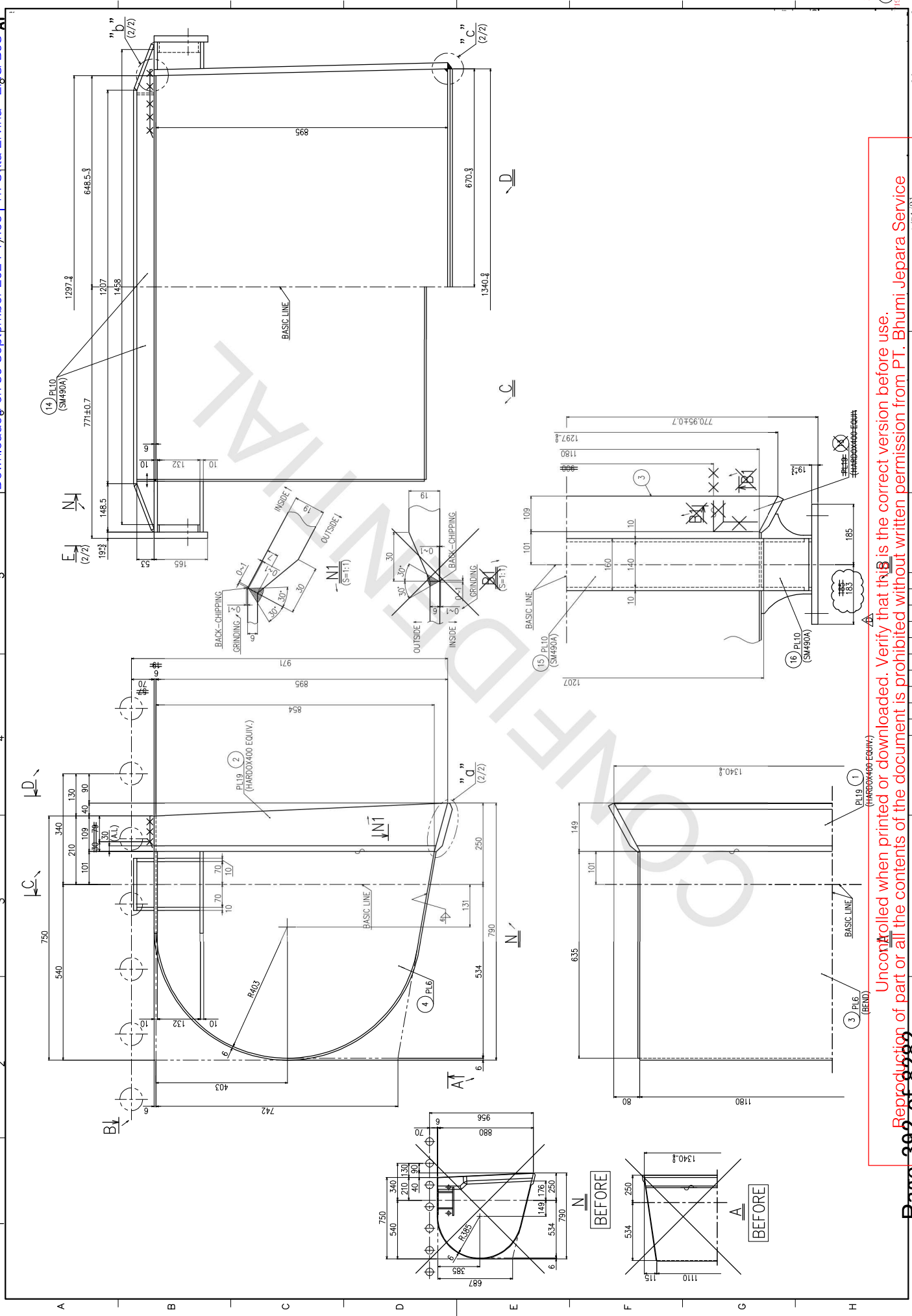
QTY:TOTAL x - x -

PURC or P: PURCHASE

REV. / revision No	MARK	PARTICULARS	SHAPE & SIZE	SPECIAL PROCESS	MATERIAL	QTY		MASS		KIND	P	SUPPLY	INSTALL CLASS	REMARKS
						No. PER SET	SET	ONE kg	TOTAL kg					
1		Bucket				1	2	278.000	556.000	PURC				Spare Parts for customer.

NOTE

1. The same bucket as BK1BA88 0760-0101 shall be arranged.
2. Detail of bucket shall be referred to Bucket (BK1BA88 0760-0101).



Unauthorized reproduction of part or all the contents of the document is prohibited without written permission from PT. Bhumi Jeparo Service

2. BUCKET CHAIN

(NOTE)

DESIGNED	CHECKED	APPROVED
-	-	-

DESIGNED	CHECKED	APPROVED
-	-	-

EDITION	DATE	DESIGN DEPT.			AGREEMENT		
		DRAWN	DESIGNED	CHECKED	APPROVED	CHECKED	APPROVED
FIRST	NOV.9 2017	-	Chen	Daimon	Tsutamori	-	-
LAST	DEC.19 2017	-	Chen	Daimon	Tsutamori	-	-

MASS (kg)	
MAIN STRUCT.	0
AUX. STRUCT.	0
MECH. PARTS.	0
PURCHASE	1300
PIPING	0
OTHER	0
TOTAL/THIS LIST	1300
TOTAL-CRANE(S)	-

WORK No.	PROJECT	PURCHASER	
BK1BA88	2500t/h CSU		
CLASSIFICATION	REV.	DRAWING No.	TITLE
0009	0207	A	Bucket Elevator Chain

Total arrangements number = QTY: TOTAL x Arrangement(s) number x Crane(s)	
Total arrangements number	=
Q'TY: TOTAL x	- x -

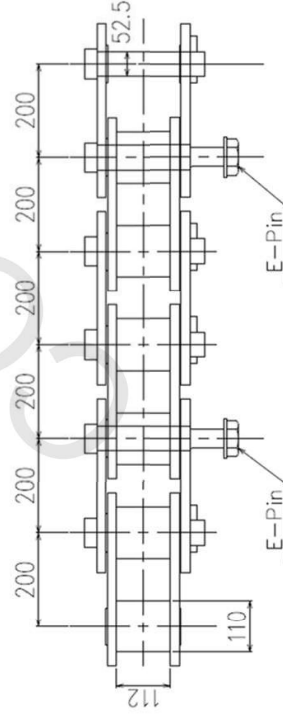
PURC or P-PURCHASE

REV.	REASON No	MARK	PARTICULARS	SHAPE & SIZE	SPECIAL PROCESS	MATERIAL	No PER SET	Qty SET	MASS		INSTALL CLASS	REMARKS
									ONE kg	TOTAL kg		
*	01D	A	+	Bucket Elevator Chain Pitch:200mm; 6 Links			4	8	1680	14,440	PURC	
*	01G	A	1	Bucket Elevator Chain Pitch:200mm; 6 Links			1	8	156,000	1,248	PURC	
			2	Bucket Elevator Chain Pitch:200mm; 2 Links			1	1	52,000	52,000	PURC	

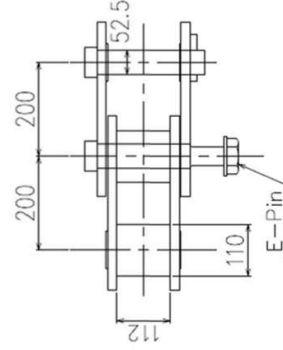
NOTE

1. Bucket Elevator Chain arranged by this drawing is the same as 0760-0201.

1 Bucket Elevator Chain
(6 Links)



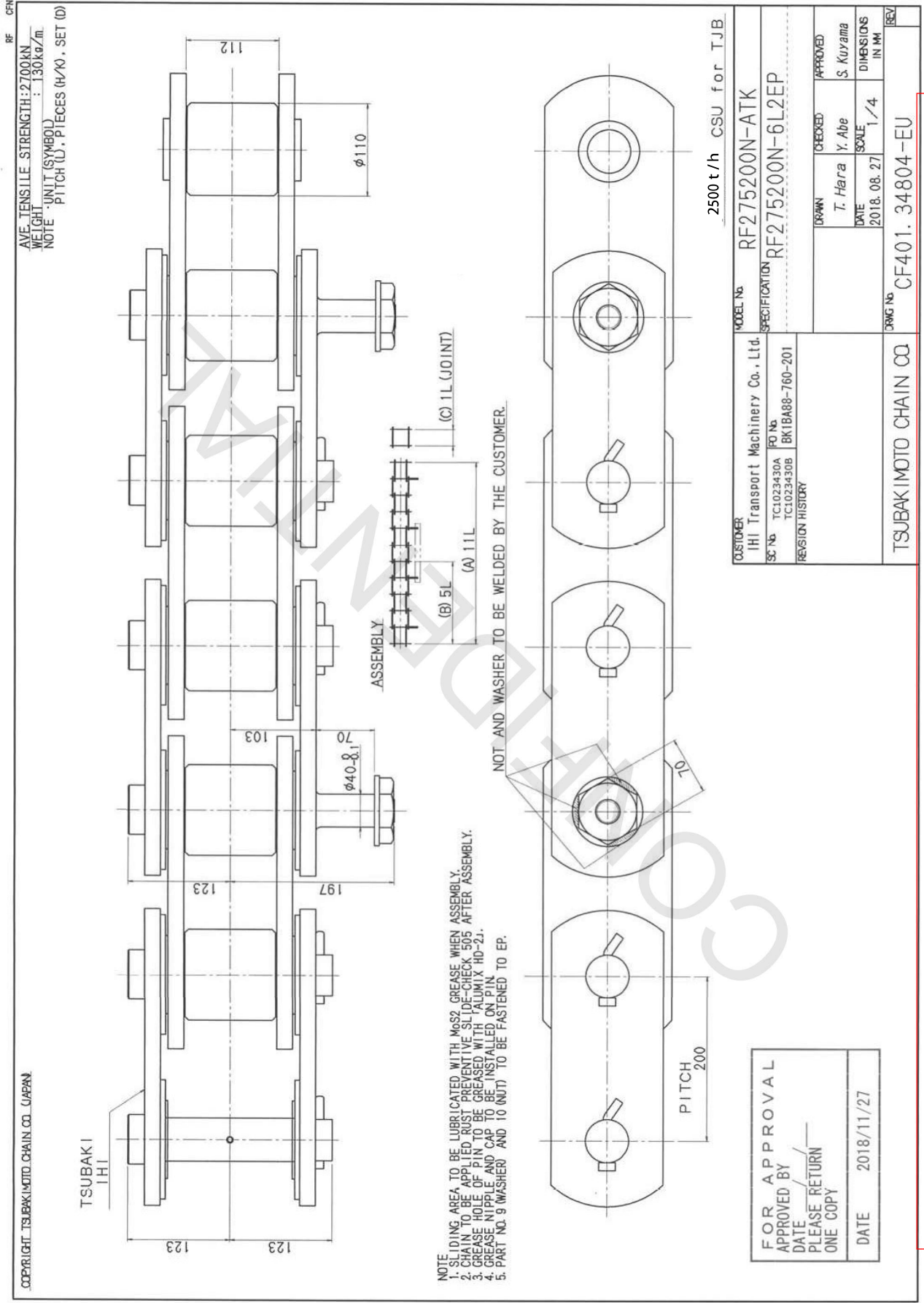
2 Bucket Elevator Chain
(2 Links)



A	REV.	2017.12.19	Progress
DESIGNED	CHECKED	APPROVED	発注前
			Informed to
			資材部
			游S
DESTROY DRAWING ISSUED BEFORE.			

Uncontrolled when printed or downloaded. Verify that this is the correct version before use.

Reproduction of part or all the contents of the document is prohibited without written permission from PT. Bhumi Jepara Service



3. BRAKE LINING FOR MOTORS

	EQUIPMENT NAME	BRAKE NO.	LINING NO.
3-1	BRAKE LINING FOR BOOM SLEWING	IB30-201	IB30-20
3-2	BRAKE LINING FOR BOOM CONVEYER	IB30-131	IB30-13
3-3	BRAKE LINING FOR BUCKET ELEVATOR	IB30-203	IB30-20

IB30-13		<div style="border: 1px solid red; padding: 5px; color: red;"> 2/set × 2sets=4 approx. 1kg/set × 2sets=2kg </div>
IB30-20		<div style="border: 1px solid red; padding: 5px; color: red;"> 2/set × 2sets=4 approx. 2.1kg/set × 2sets=4.2kg </div>

Fig.1 Brake lining outline drawing