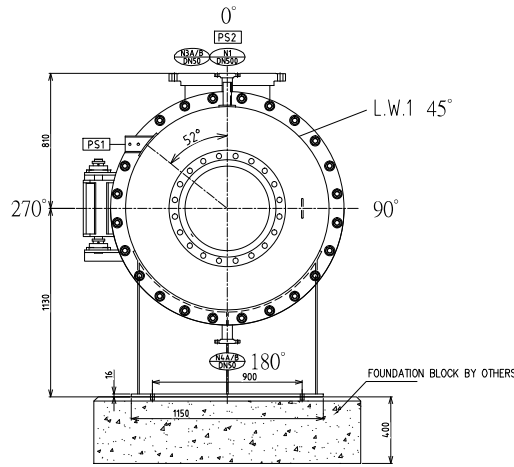
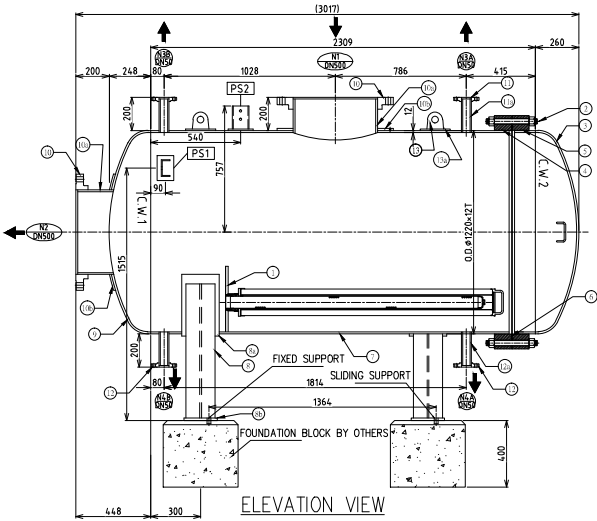


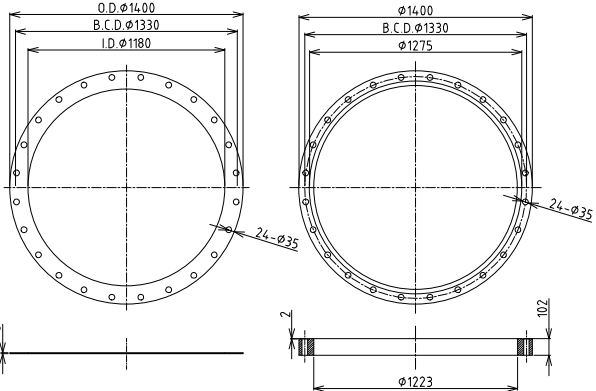
PLAN VIEW
SCALE = 1:15



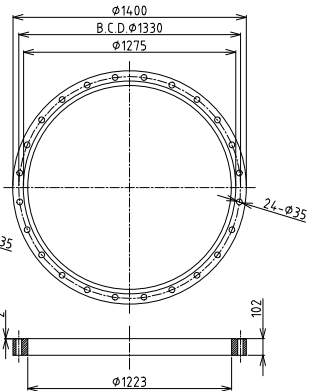
FRONT VIEW
SCALE = 1:15



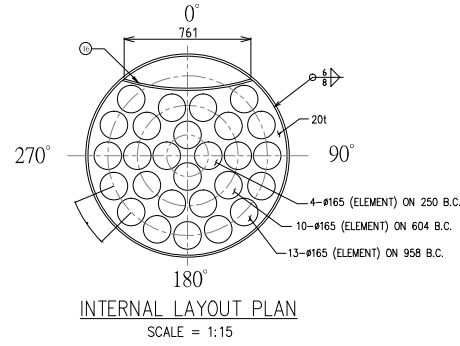
ELEVATION VIEW
SCALE = 1:15



GASKET DETAIL
SCALE = 1:15



SHELL / COVER FLANGE DETAIL
SCALE = 1:15



INTERNAL LAYOUT PLAN
SCALE = 1:15

DESIGN CONDITIONS

DESIGN CODE	ASME SECT VIII DIV 1
ASME U STAMP	NO
DESIGN PRESSURE	14.9 BARG
DESIGN TEMPERATURE	60 DEG. C
HYDROSTATIC TEST (SHOP)	1.5 TIMES DESIGN PRESSURE
PNEUM. TEST	NO
NDT (RT, LT & MPT)	RT 1, 100% LT & 10% MPT
PAI	NO
POST WELD HEAT TREATMENT	NOT REQUIRED
CORROSION ALLOWANCE	3.0 mm
JOINT EFFICIENCY (S/A)	1.0

SURFACE FINISH REQUIREMENTS

BLAST TO SA 2.5 + ZINC EPOXY PRIMER, EPOXY HIGH SOLID INTERMEDIATE,
2-COMP POLYURETHANE FINISH (270 um DFT) CHROME GREEN (RAL6020)

INTERNAL FINISH REQUIREMENTS

BLAST TO SA 2.5 + 2 COAT EPOXY PHENOLIC (200 um DFT)

WEIGHTS

EMPTY WEIGHT	2319.8 KG
OPERATING WEIGHT	5480.5 KG

BILL OF MATERIAL

ITEM NO.	DESCRIPTION	QTY.	MATERIAL	REMARK
1	TUBESHEET	1	SA 240 TP 316/316L	20 t
2	BOLTS AND NUTS	24	SA- 193-B7 / SA 194-2H	M33 X 330 L
3	COVER	1	SA 516-GR70	12 t
4	SHELL FLANGE	1	SA 105	102t X OD1200 X ID1223
5	COVER FLANGE	1	SA 105	102t X OD1200 X ID1223
6	COVER GASKET	1	EPDM	6 t
7	SHELL	1	SA 516-GR70	12 t
8	SUPPORT SADDLE	2	SS400	10 t
8a	S. SADDLE PAD	2	SA 516-GR70	12 t
8b	BASE PLATE	2	SS400	16 t
9	HEAD	1	SA 516-GR70	12 t
10	INLET/OUTLET FLANGE	2	SA-105	DN500 ANSI 150#
10a	INLET/OUTLET NECK	2	SA-5167 GR 70	12 t
10b	INLET/OUTLET PAD	2	SA-5167 GR 70	12 t
11a	VENT FLANGE	2	SA-105	DN50 ANSI 150#
11b	VENT NECK	2	SA-106 GR B	SCH 160
12	DRAIN FLANGE	2	SA-105	DN50 ANSI 150#
12a	DRAIN NECK	2	SA-106 GR B	SCH 160
13	LIFTING LUG	2	SS400	12 t
13a	LIFTING LUG PAD	2	SA 516-GR70	12 t
14	PIPE SUPPORT BRACKET	2	SS400	6 t
15	PIPE SUPPORT PAD	2	SA 516-GR70	10 t
16	BAFFLE PLATE	1	SA 516-GR70	12 t

NOZZLE SCHEDULE

ID.	QTY.	SIZE	RATING	TYPE	NOZZ THK.	SERVICE	REMARKS
N1	1	DN500	ANSI 150#	SOFF	12 MM	INLET	
N2	1	DN500	ANSI 150#	SOFF	12 MM	OUTLET	
N3/N4	2	DN50	ANSI 150#	SOFF	SCH 160	VENT	
N5/N6	2	DN50	ANSI 150#	SOFF	SCH 160	DRAIN	

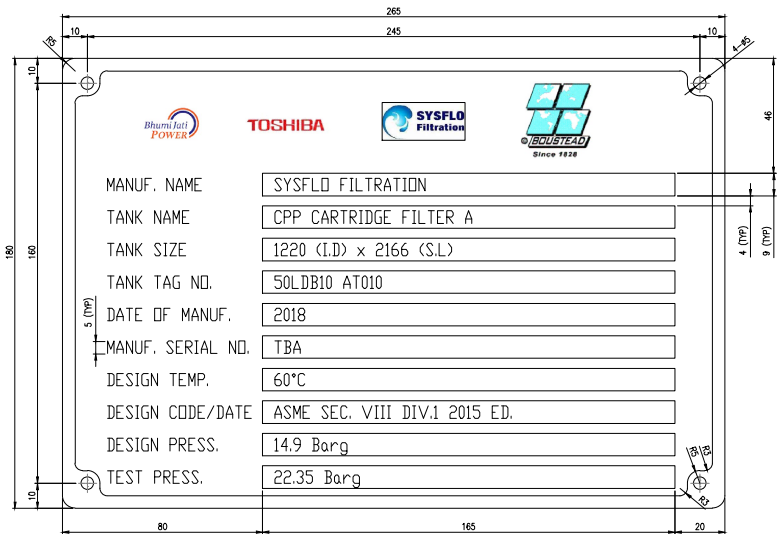
REFERENCE DRAWINGS:

- PIPING AND INSTRUMENTATION DIAGRAM FOR CONDENSATE POLISHING PLANT REFER DRAWING No.: 1JBS6-L1-OFF-C-LD-M-PID-2133.
- GENERAL ARRANGEMENT DRAWING FOR CONDENSATE POLISHING PLANT REFER DRAWING No.: 1JBS6-L1-OFF-C-LD-M-DGA-3100.
- GENERAL ARRANGEMENT OF STEAM TURBINE BUILDING REFER DRAWING No.: 1JBS6-L1-OFF-C-LD-M-DGA-2901.
- FOUNDATION OUTLINE FOR CONDENSATE POLISHING PLANT REFER DRAWING No.: 1JBS6-L1-OFF-C-LD-M-DFN-3008.
- PAINTING SPECIFICATION FOR CONDENSATE POLISHING PLANT REFER DRAWING No.: 1JBS6-BSWS-G-017.
- SHOP INSPECTION AND TEST PROGRAM FOR CONDENSATE POLISHING PLANT REFER DRAWING No.: 1JBS6-L1-OFF-C-LD-Q-SCH-3910.

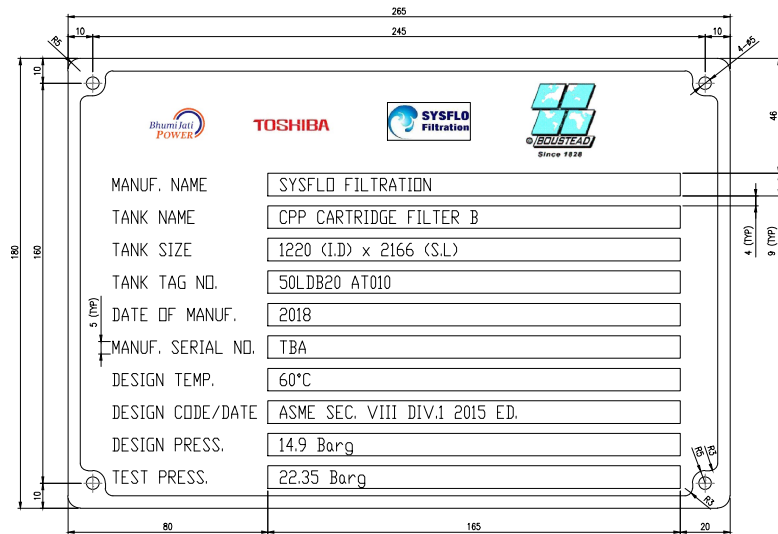
DATE	DESCRIPTION	BY	CHKD
03/1/JAN/19	ISSUED FOR FABRICATION	PPA	VLP/TTH/MT
12/DEC/18	ISSUED FOR APPROVAL	PPA	VLP/TTH/MT
28/APR/18	ISSUED FOR APPROVAL	PPA	VLP/TTH/MT
28/DEC/17	ISSUED FOR APPROVAL	ZHM	VLP/TTH/MT
02/MAY/17	ISSUED FOR APPROVAL	ZHM	VLP/TTH/MT
NO DD/MM/YY	REVISIONS AND RECORD OF ISSUE	BY	DESIGN/APP

UNITS	VIEW	SCALE
mm/m	ISO/PLAN/ST/3RD	

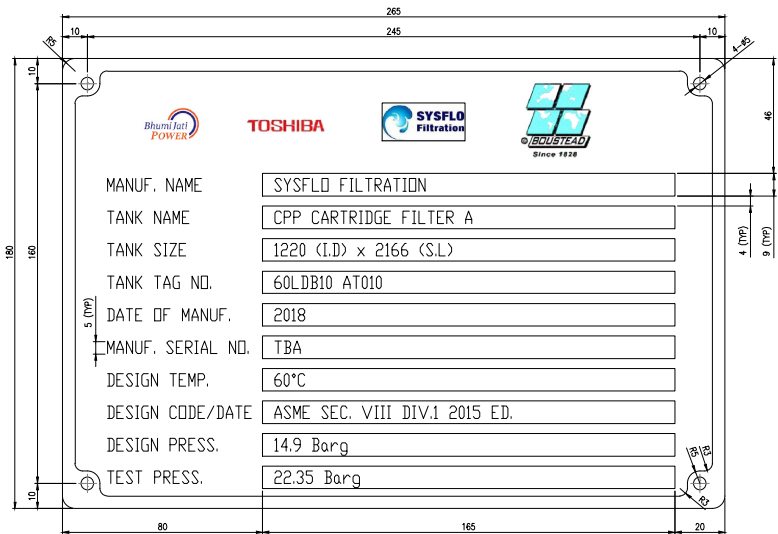
PP SYSTEM CONTRACTOR	BSWS DRAWING NO.	REV
	1JBS6-BSWS-H-001	0
SHEET NO. 3 OF 3		



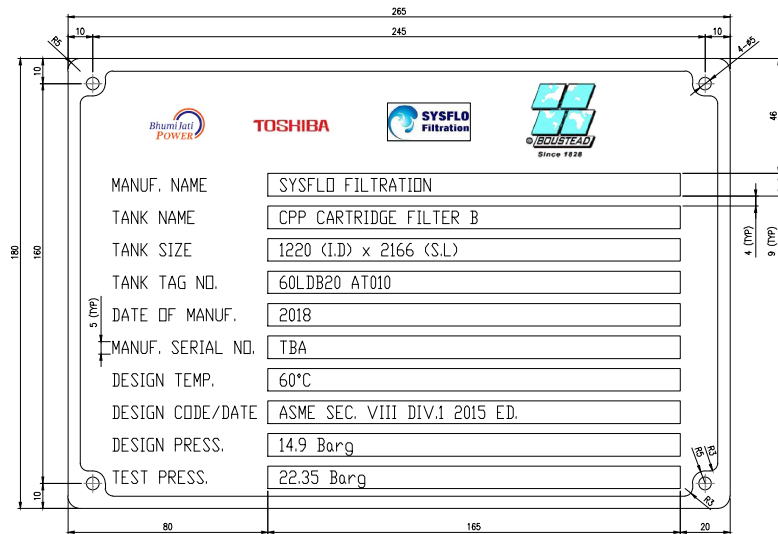
DETAIL OF NAME PLATE
SCALE = 1 : 1
N.P.



DETAIL OF NAME PLATE
SCALE = 1 : 1
N.P.



DETAIL OF NAME PLATE
SCALE = 1 : 1
N.P.



DETAIL OF NAME PLATE
SCALE = 1 : 1
N.P.

NO	DD/MM/YY	REVISIONS AND RECORD OF ISSUE	BY	DESIGN/APP
0	31/JAN/19	ISSUED FOR FABRICATION	PPA	VLP/TH/MT
D	12/DEC/18	ISSUED FOR APPROVAL	PPA	VLP/TH/MT
C	28/APR/18	ISSUED FOR APPROVAL	PPA	VLP/TH/MT
B	28/DEC/17	ISSUED FOR APPROVAL	ZHM	VLP/TH/MT
A	02/MAY/17	ISSUED FOR APPROVAL	ZHM	VLP/TH/MT
NO		DD/MM/YY	REVISIONS AND RECORD OF ISSUE	BY

SCALE		ISSUE DRAWING TITLE	
UNITS	VIEW	NAME PLATE DETAIL DRAWING FOR CONDENSATE POLISHING PLANT VESSELS	
mm/m	ISO/PLAN/ST/3RD	CPP CARTRIDGE FILTER A/RS UNIT S&S	
CPP SYSTEM CONTRACTOR	ISSUES DRAWING NO.	REV	
	1JBS6-BSWS-H-001	0	
	SHEET NO. 3 OF 3		