

Applications

- Marine
- Brackish Water
- Air Aftercooling
- Water to Water



Technical Specifications

Materials

Tubes	Copper Nickel (90/10)
Tubesheets	Brass
Shell	Steel (Brass optional)
Shell Connections	Brass
Baffles	Brass
End Bonnets	Bronze
Mounting Brackets	Steel
Gaskets	Nitrile Rubber/Cellulose Fibre
Hardware	Alloy Steel/Optional SS
Anodes	Zinc in Alloy Steel

Design Pressure

Shellside : 17 bar Tubeside : 10 bar

Design Temperature : 150°C

Ratings

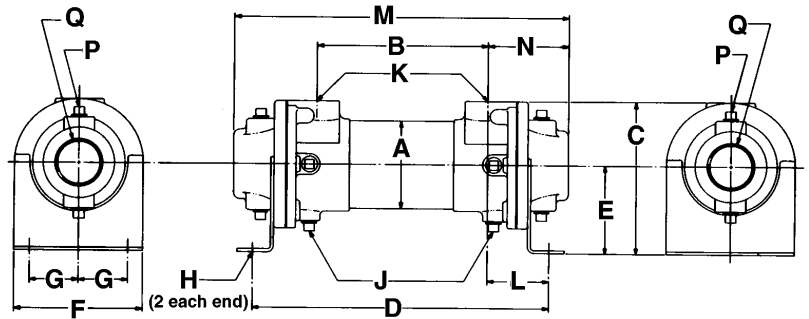
Part No.	Max Flow Shell Side (L/min)	Max Flow Tube Side (L/min)	Cooling Capacity (kW)*
65/B0401/OSW	36	94	4.5
65/B0701/OSW	64	230	12
65/B0701/FSW	64	56	11
65/B0702/OSW	110	230	18
65/B0702/FSW	110	56	16
65/B1003/OSW	260	550	64
65/B1003/TSW	260	270	60
65/B1006/OSW	260	550	75
65/B1006/TSW	260	270	70
65/B1206/OSW	435	848	150
65/B1206/FSW	435	210	145
65/B1608/OSW	960	1374	380
65/B1608/FSW	960	345	370

* Performance based on ISO68 oil in shell leaving at 22°C above cooling water entering temperature in tubes. Fluids at maximum flow rates. For capacities at other operating conditions consult our sales office.

DIMENSIONS

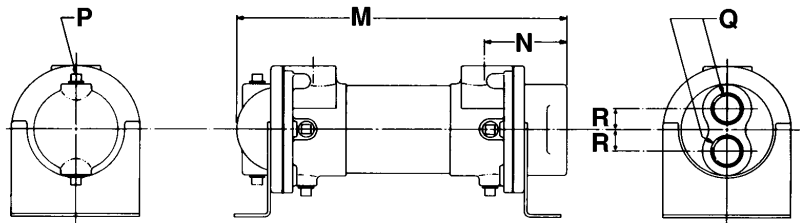
One Pass (Code "0")

	M	N	P	Q*
B0401/OSW	286	46	-	1"
B0701/OSW	347	82	3/8"	1 1/2"
B0702/OSW	575	82	3/8"	1 1/2"
B1003/OSW	828	103	3/8"	2"
B1006/OSW	1520	103	3/8"	2"
B1206/OSW	1530	124	1/2"	3"
B1608/OSW	2048	166	1/2"	4"



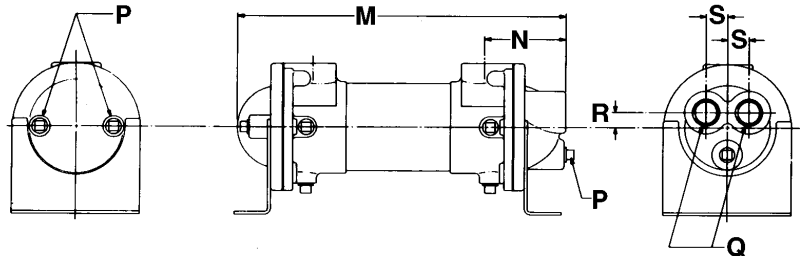
Two Pass (Code "T")

	M	N	P	Q*	R
B1003/TSW	820	97	3/8"	1 1/2"	30
B1006/TSW	1520	97	3/8"	1 1/2"	30



Four Pass (Code "F")

	M	N	P	Q*	R	S
B701/FSW	345	59	3/8"	3/4"	16	22
B702/FSW	573	59	3/8"	3/4"	16	22
B1206/FSW	1532	125	1/2"	1 1/2"	27	36
B1608/FSW	2050	165	1/2"	2"	35	48



All dimensions are ± 2%.

COMMON DIMENSIONS

	A	B	C	D	E	F	G	H	J	K*	L	Wt kg
B0401	54.0	193.5	88.9	279.7	49.3	66.6	22.4	Ø10.4	-	1/2"	43.7	3.2
B0701	92.9	177.8	158.8	305.1	91.9	133.4	38.1	Ø11x25	3/8"	1"	68.3	10.5
B0702	92.9	406.4	158.8	533.7	91.9	133.4	38.1	Ø11x25	3/8"	1"	68.3	12.7
B1003	130.2	622.3	187.5	780.0	101.6	171.5	50.8	Ø11x25	3/8"	1 1/2"	77.7	29.5
B1006	130.2	1314.2	187.5	1472.0	101.6	171.5	50.8	Ø11x25	3/8"	1 1/2"	77.7	40.0
B1206	155.6	1282.7	223.8	1457.5	120.7	190.5	63.5	Ø11x22	3/8"	2"	87.4	72.6
B1608	203.2	1717.0	308.1	1940.1	165.1	218.9	88.9	Ø11x25	3/8"	3"	111.5	141.0

All ports are NPT female pipe thread. BSPP available. Ports Q for cooling fluid only. Port K for oil or fluid to be cooled.

WATER COOLED