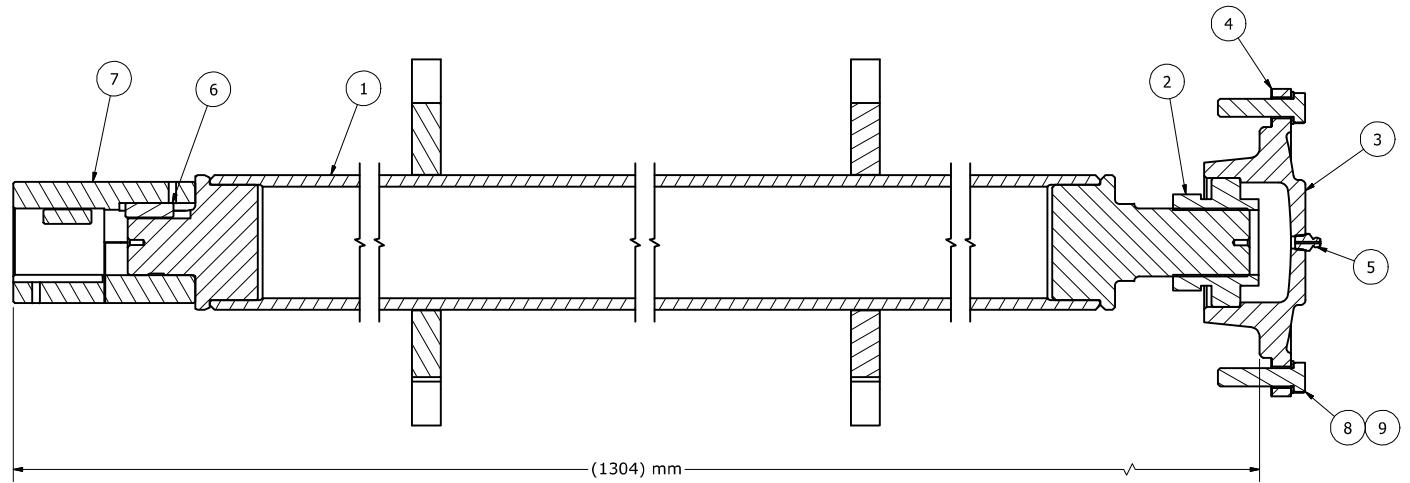
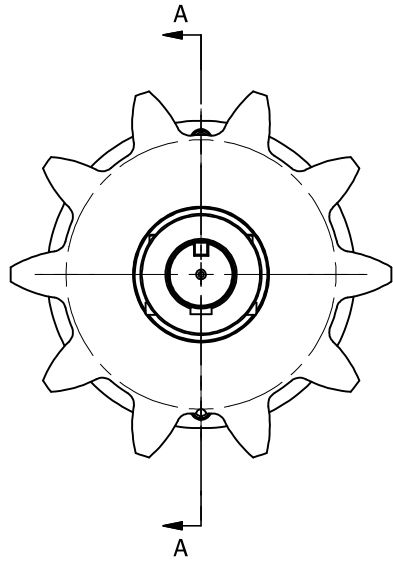


ITEM	PART NUMBER	SAP No	DESCRIPTION	QTY
61	TT	V015493,806	TEMP TRANSMITTER MDL:TR10-A1A1CASF42002	1
60	NHP-M8	V000453,805	HEX NUT M8	8
59	SCP-M18-35	V000702,805	BOLT ALLEN M8 X 35	8
58	--	V001007,805	HOSE PIPE - GREASE HOSE - 1/4" X 5 MTR	1
57	--	V000995,805	GREASE NIPPLE 1/4 BSP	4
56	71LP	V016043,806	MOTOR 71LP/4 TF/0,37KW (85015210)	1
55	132MH	V016042,806	MOTOR 132MH/4 TF/7,5KW (85015210)	1
54	Ø3X30mm	V001325,805	SPLIT PIN	166
53	BL1324-101	V000214,810	CASTING CHAIN LINK	166
52	C15678-101	V000220,810	18" SWEEP CASTING WING CHAIN	20
51	A22827-001	V001286,806	COC GRP PINHEADED CHAINASY	146
50	M12x100	V007828,805	STUD - M12x100 LG	4
49	SCP-M12-65	V000333,805	BOLT HEX HEAD M12x65	4
48	NHP-M12	V000442,805	HEX NUT M12	8
47	WLP-M12	V000839,805	SPRING WASHER M12	11
46	SCP-M16-40	V000340,805	BOLT HEX HEAD M16x40	10
45	WSP-M12	V000839,805	SPRING WASHER M12	25
44	SCP-M12-40	V000060,805	BOLT HEX HEAD M12x40	28
43	SCP-M16-70	V000072,805	BOLT HEX HEAD M16x70	8
42	S15136-002	V001362,804	END DOOR GROUP - DISCHARGE	1
41	S15356-001	V061452,804	FIC MOUNTING BRACKET	1
40	S15089-001	V061517,804	WATER SPRAY GROUP	1
39	DV22-146	V016045,806	BELT SWAY SWITCH 60-30GATEX21 (DV22-146)	2
38	S11148-001	V019043,804	DUAL MAGNETIC SENSOR ASSY IEC 132-S11148	1
37	NHP-M16	V000444,805	NUT HEX M16	14
36	WLP-M16	V000840,805	SPRING WASHER M16	28
35	SK33100	V016041,806	GB SK33100V/IEC11/T-1175,19-1(84834000)	1
34	SK 9072	V016040,806	GB SK9072,1VF/IEC132/L-79,69-1(84834000)	1
33	C27247-002	V454720,801	GROUP - COAL ON BELT, PADDLE ARLARM ATEX	1
32	C27247-001	V461279,801	GROUP - COAL ON BELT, PADDLE ARLARM ATEX	1
31	S15349-001	V061512,804	WEIGH SPAN ROLLER W/T CMM	1
30	S15345-001	V061508,804	BELT DRIVE ASSEMBLY GROUP	1
29	S15341-002	V061520,804	TEST WEIGHT GROUP ASSEMBLY	1
28	S15341-001	V061519,804	TEST WEIGHT GROUP ASSEMBLY	1
27	S13858-001	V053247,804	GROUP - LIGHT, LUMINAIRE	2
26	S15193-001	V061501,804	WEIGH SENSING GROUP	1
25	S15196-001	V061499,804	BELT SCRAPER ASSEMBLY	1
24	S10911-001	V003928,804	BUSH FLAT BRASS 72X50X6THK S10911-001	2
23	S10897-001	V003219,804	GUARD PADDLE ALARM SWITCH	1
22	S15192-001	V061480,804	INLET SUPPORT ROLLER GROUP	6
21	S15265-001	V061487,804	ADAPTOR-BELT DRIVE MOTOR	1
20	S10796-001	V000997,805	GASKET, BELT DRIVE	1
19	S10797-001	V001215,806	GASKET, BELT DRIVE	1
18	S15270-001	V061497,804	ASSEMBLY - COC TAKE-UP GROUP	1
17	S15264-001	V061486,804	ADPATOR COC DRIVE	1
16	S15263-002	V007811,805	GASKET-COC DRIVE	1
15	S15263-001	V007810,805	GASKET-COC DRIVE	1
14	S15266-001	V061492,804	COC DRIVE- ASSEMBLY GROUP	1
13	S15187-001	V061390,804	INLET GROUP ASSEMBLY	1
12	S15136-001	V061361,804	END DOOR GROUP - INLET	1
11	S15180-001	V061382,804	WEIGH DOOR ASSEMBLY	2
10	S15183-001	V061386,804	WELDMENT - JIB ARM (WEIGH DOOR)	2
9	S15132-001	V061351,804	INSPECTION WINDOW GROUP	1
8	S15100-002	V061286,804	GROUP - SEAL AIR (CLOSED)	1
7	S15100-001	V061285,804	GROUP - SEAL AIR (OPEN)	1
6	FP01757	V001249,806	CAP CAMLOCK COUPLING	1
5	FP01756	V001248,806	COUPLING CAMLOCK	1
4	S10365-001	V000698,806	ROLLER WEIGH SPAN ASSLY	1
3	S10442-001	V000491,806	BELT TAKE UP ASSY	1
2	V016002	V016002,806	BELT-EG3651, 5512mm LG SPS/PL/FP/014	1
1	S15067-001	V061272,804	FEEDER BODY WELDMENT/MACHING	1

PREPARED BY: JARJEH CHECKED BY: JARJEH DATE: 13/02/2018 CAD FILE: S14996.dwg Stock Equipment Company 6490 Chillicothe Road Chagrin Falls, Ohio 44023 www.stockequipment.com 440.543-6000	UNITS: DIMENSIONS UNITS PART NO: S14996-001 PART NAME: FEEDER DRAWING QTY: SEE CHART / SHEET NO: 1 OF 4 SIZE: D DRAWN BY: JARJEH DATE: 13/02/2018 CHECKED BY: JARJEH DATE: 13/02/2018 CAD FILE: S14996.dwg	REF. DWG: S14413 NEXT ASSY: S14991 S.O. NO. FEEDER FINAL ASSEMBLY 36" GRAVIMETRIC FEEDER MODEL: EG 36 SAP CODE: V061271.B04	
--	--	---	--



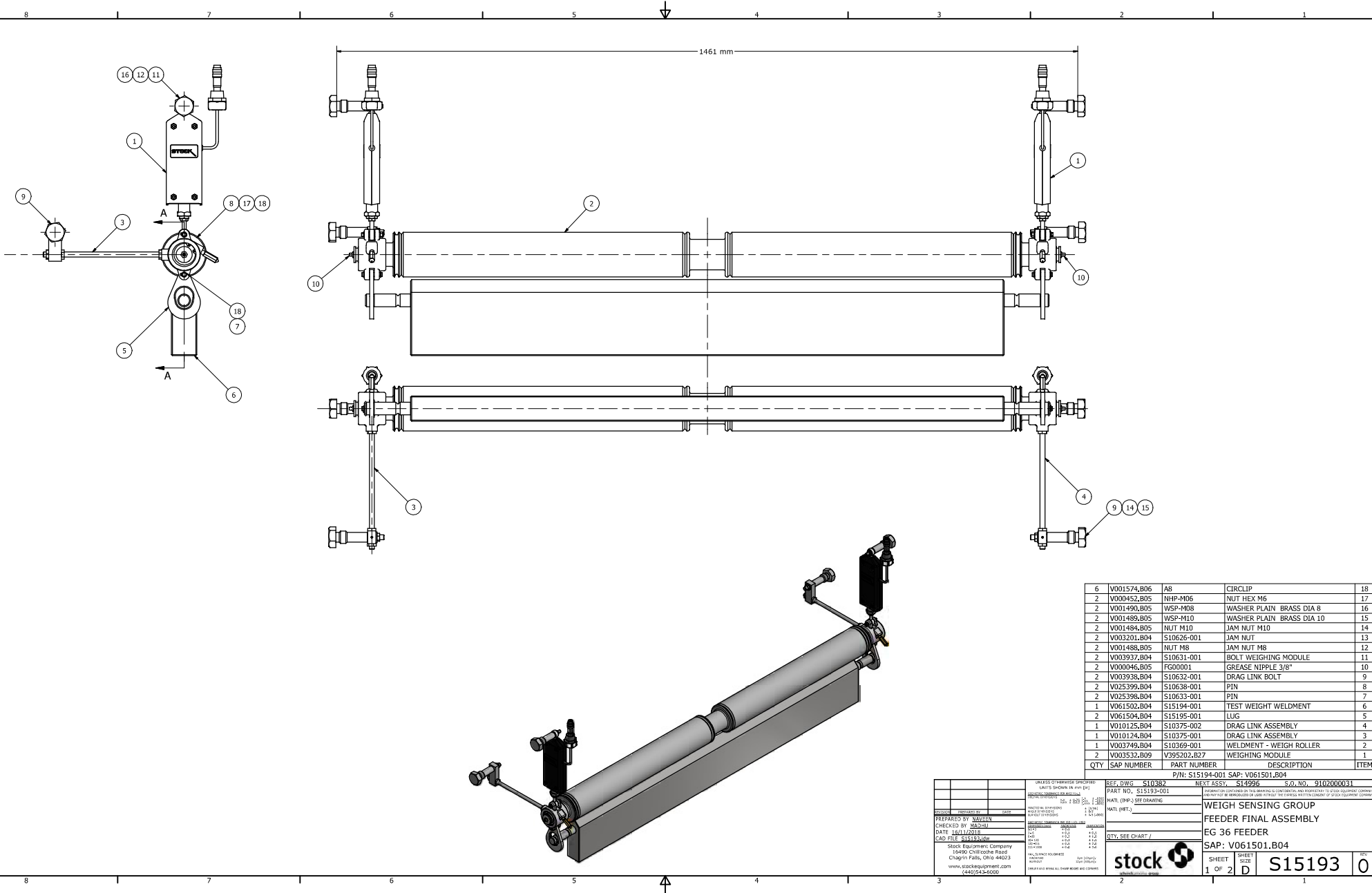
SECTION A-A

NOTE: SPARY GALVANING TO BE DO BE DONE.

QTY	SAP NUMBER	PART NUMBER	DESCRIPTION	ITEM
4	V004047.B05	WLP-M12	WASHER LOCK REGULAR M12	9
4	V004922.B05	SCP-M12-50	SCREW HEX HEAD CAP PLATED M12x1.75 X 50MM	8
1	V061496.B04	S15269-001	SHAFT COUPLING-COC DRIVE	7
2	V003176.B04	S10437-029	KEY SQUARE ENDS	6
1	V000046.B05	FG00001	GREASE NIPPLE 3/8"	5
1	V003174.B04	S10409-001	GASKET HOUSING COC	4
1	V003173.B04	S10408-001	HOUSING - BEARING	3
1	V001252.B06	B000111	BEARING ECCN.LOC COLLER YEL 209 2F	2
1	V061493.B04	S15267-001	SHAFT WELDMENT COC DRIVE- ASSEMBLY	1

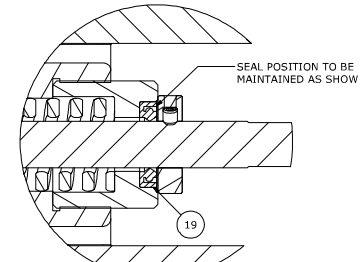
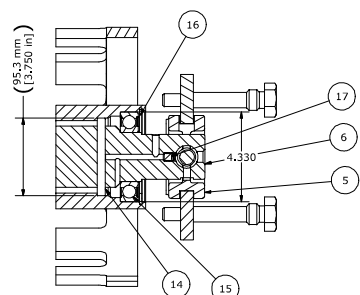
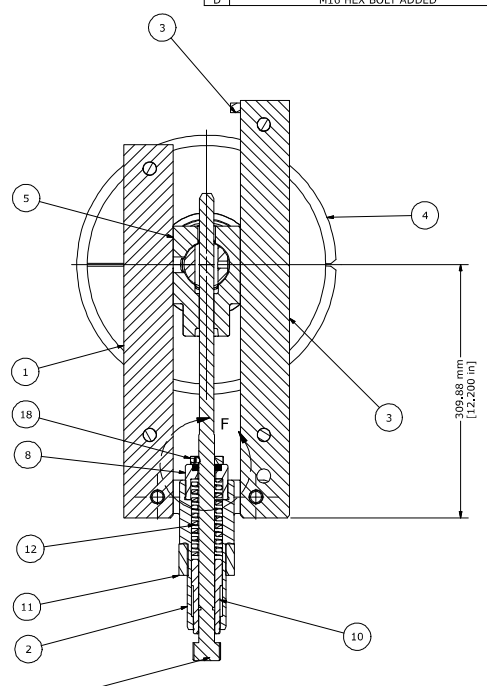
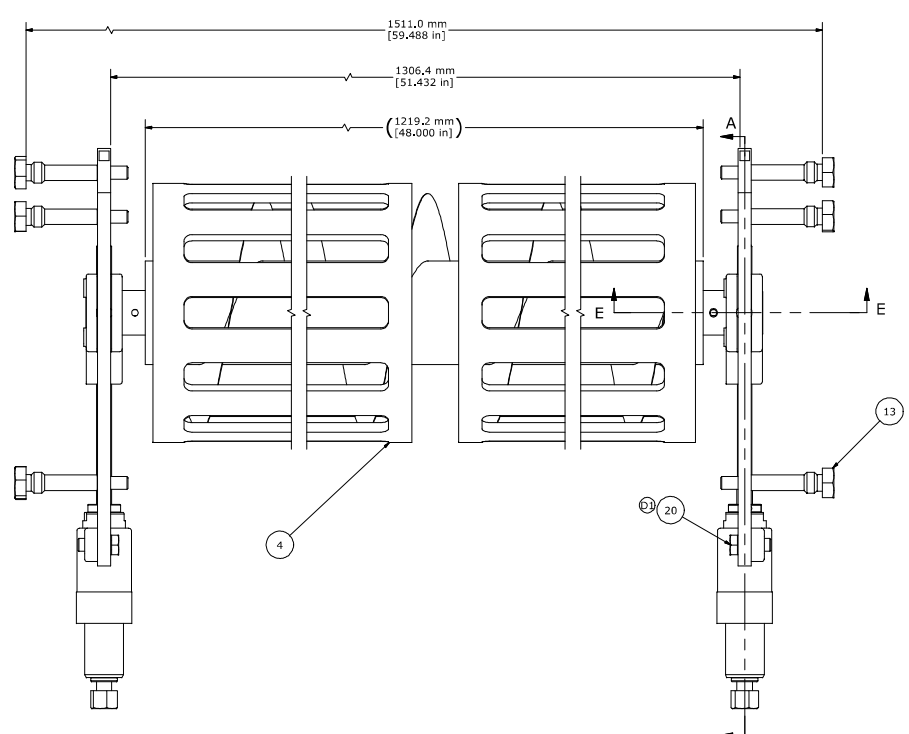
P/N: S15266-001 SAP: V061492.B04

REF. DWG	S10438	NEXT ASSY.	S14996	S.O. NO.	9102000031
PART NO.	S15266-001	INFORMATION CONTAINED ON THIS DRAWING IS CONFIDENTIAL AND PROPRIETARY TO STOCK EQUIPMENT COMPANY AND MAY NOT BE REPRODUCED OR USED WITHOUT THE EXPRESS WRITTEN CONSENT OF STOCK EQUIPMENT COMPANY			
MATL (IMP.)	SEE DRAWING	ASSEMBLY - COC DRIVE			
MATL (MET.)		FEEDER FINAL ASSEMBLY			
QTY.	SEE DRAWING /	EG 36 FEEDER			
		SAP: V061492.B04			
UNLESS OTHERWISE SPECIFIED UNITS SHOWN IN mm [in]		stock 			
DECIMAL DIMENSIONS $\frac{X}{Y} \pm \frac{Z}{100}$ [X.YZ]		SHEET SIZE 1 OF 1 C			
FRACTIONAL DIMENSIONS $\frac{X}{Y} \pm \frac{Z}{100}$ [X.YZ]		SHEET NUMBER S15266			
ANGLE DIMENSIONS $\pm \frac{X}{100}$ [X.Y]		REV 0			
BREAKOUT DIMENSIONS $\pm \frac{X}{100}$ [X.Y]					
PREPARED BY NAVEEN CHECKED BY MADHU DATE 13/11/2018 CAD FILE S15266.dwg					
Stock Equipment Company 16490 Chillicothe Road Chagrin Falls, Ohio 44023 www.stockequipment.com (440)543-6000					
FINISHES MACHINED BURNED DEBUR AND BREAK ALL SHARP EDGES AND CORNERS					



6	V001574.B06	A8	CIRCLIP	18
2	V000452.B05	NHP-M06	NUT HEX M6	17
2	V001490.B05	WSP-M08	WASHER PLAIN BRASS DIA 8	16
2	V001489.B05	WSP-M10	WASHER PLAIN BRASS DIA 10	15
2	V001484.B05	NUT M10	JAM NUT M10	14
2	V003201.B04	S10626-001	JAM NUT	13
2	V001488.B05	NUT M8	JAM NUT M8	12
2	V003937.B04	S10631-001	BOLT WEIGHING MODULE	11
2	V000046.B05	FG00001	GREASE NIPPLE 3/8"	10
2	V003938.B04	S10632-001	DRAG LINK BOLT	9
2	V025399.B04	S10638-001	PIN	8
2	V025398.B04	S10633-001	PIN	7
1	V061502.B04	S15194-001	TEST WEIGHT WELDMENT	6
2	V061504.B04	S15195-001	LUG	5
1	V010125.B04	S10375-002	DRAG LINK ASSEMBLY	4
1	V010124.B04	S10375-001	DRAG LINK ASSEMBLY	3
1	V003749.B04	S10369-001	WELDMENT - WEIGH ROLLER	2
2	V003532.B09	V395202.B27	WEIGHING MODULE	1
QTY	SAP NUMBER	PART NUMBER	DESCRIPTION	ITEM

PREPARED BY: MAVEN CHECKED BY: M2320 DATE: 10/11/2018 CAD FILE: S15193.dwg		REF. DWG: S10382 PART NO.: S15193-001 NEXT ASSY: S14996 S.O. NO.: 9102000031	
STOCK EQUIPMENT COMPANY 16400 Chillicothe Road Chagrin Falls, Ohio 44023 www.stockequipment.com (440) 543-5000		WEIGH SENSING GROUP FEEDER FINAL ASSEMBLY EG 36 FEEDER SAP: V061501.B04	
SHEET: 1 OF 2 SIZE: D		SHEET: 1 OF 2 SIZE: D S15193 0	



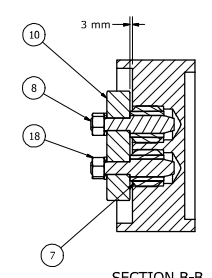
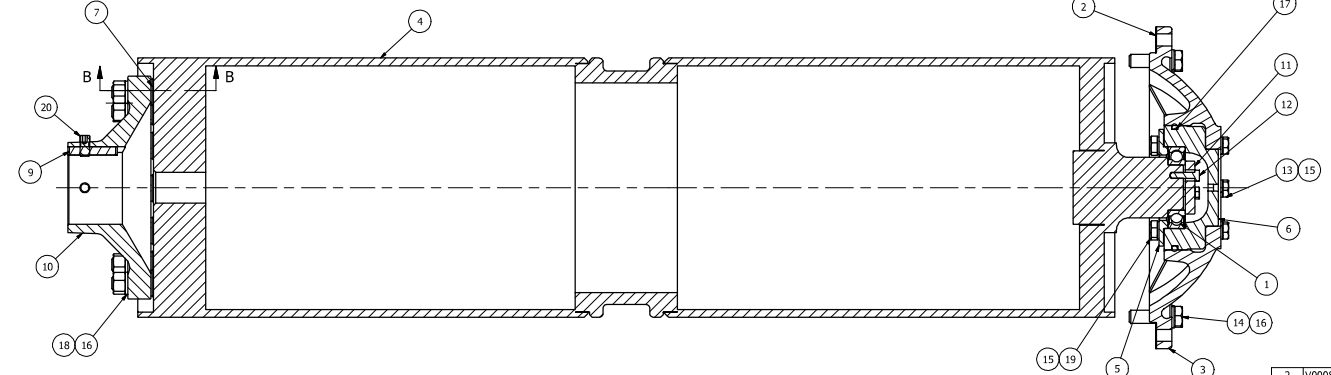
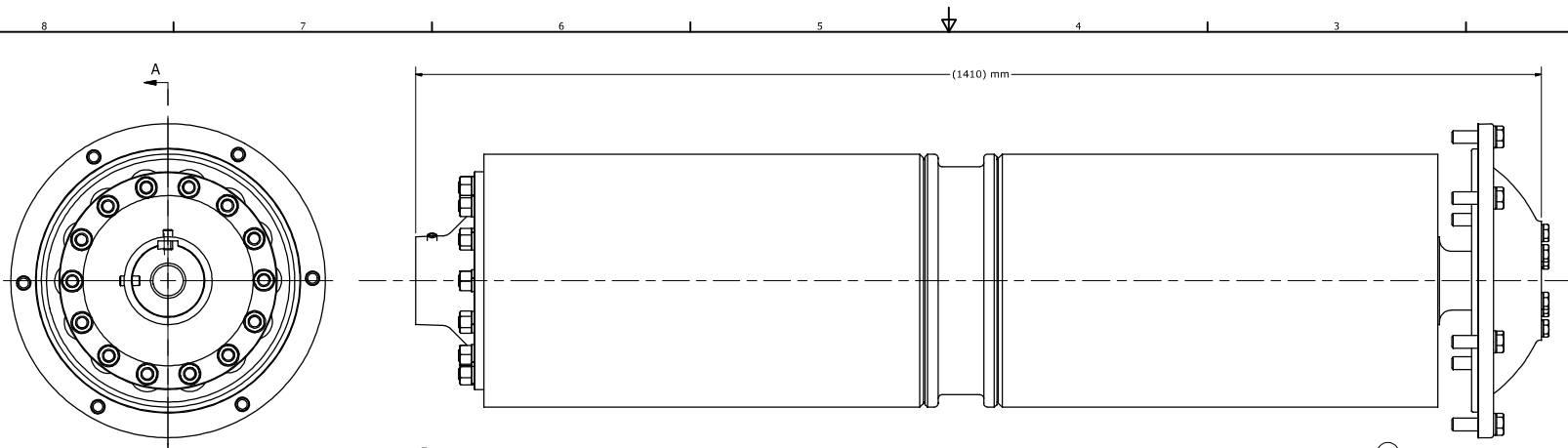
NOTE: SPRAY GALVANIZING TO BE DONE

REVISION HISTORY					
REV	DESCRIPTION	DATE	DRAWN	CHECKED	APPROVED
A	BOM UPDATED, STOPPER, SET SCREW ADDED	05/03/12	KANTHARAJ	MADHU	MV
B	SPRAY GALVANIZING ADDED	24/9/13	HARISH	MADHU	PPR
C	SEAL ADDED	23/11/13	HARISH	KKR	PPR
D	M16 HEX BOLT ADDED	17/01/14	HARISH	KKR	PPR

QTY	PART NUMBER	DESCRIPTION	ITEM
4	M16 x 40	HEX BOLT	20
2	CR20 X 35 X 5	RETAINER GREASE 20 X 35 X 5	19
2	S10896-001	STOPPER	18
2	92605A156	SET SCREW M10	17
2	RR00034	RING RETAINING INTERNAL 4.331 BORE	16
2	6212-2	DEEP GROOVE BALL BEARING SEALED AT ONE SIDE	15
2	RG00246	RETAINER GREASE 2.75 5FT 3.75 X 0.375	14
8	S10445-001	BOLT - RAIL SUPPORT	13
2	S10609-001	SPRING	12
2	S10608-001	BUSH - RUBBER	11
1	S10446-002	SPRING GUIDE	10
1	S10446-001	SPRING GUIDE	9
2	S10443-001	HOUSING SPRING	8
2	S10610-001	SCREW - TAKE-UP	7
1	S10441-011	SHAFT	6
2	S10449-001	TAKE-UP DRIVE BLOCK	5
1	S10440-001	WELDMENT - TAKE-UP PULLEY	4
2	S10603-001	WELDMENT - RAIL LOWER GUIDE	3
2	S10450-001	HOUSING - BELT TAKE-UP	2
2	S10602-001	RAIL UPPER / LOWER GUIDE	1

REF. DWG	NS306893	NEXT ASSY.	S10301	S.O. NO.
PART NO.	S10442-001			
MATL	SEE DRAWING	BELT TAKE-UP ASSEMBLY		
QTY.	SEE DRAWING	FEEDER FINAL ASSEMBLY		
		EG 3651 FEEDER		

D1 HARISH 1/17/2014 C1 HARISH 11/23/2013 B1 HARISH 24/9/13 A2 KANTHARAJ 05/03/12	Stock Equipment Company 16400 Chillicothe Road Chagrin Falls, Ohio 44023 www.stockequipment.com (440)243-6000		SHEET 1 OF 1	S10442	REV D
---	---	--	-----------------	---------------	-----------------



SECTION A-A

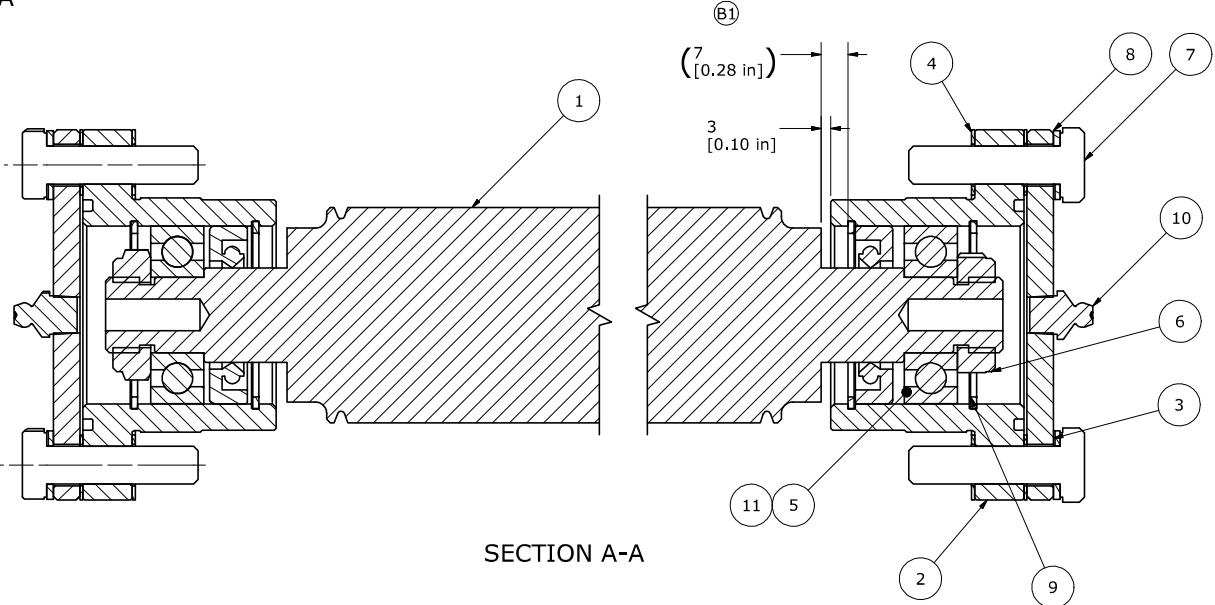
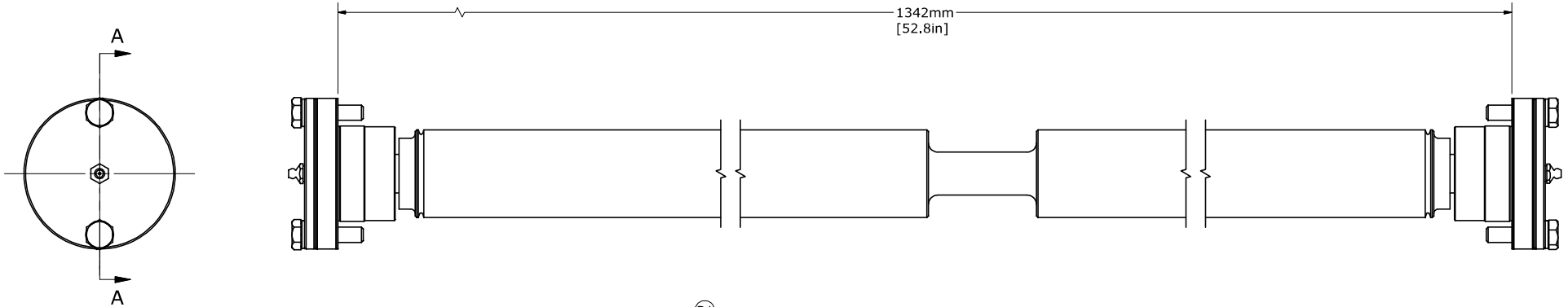
SECTION B-B

QTY	SAP NUMBER	PART NUMBER	DESCRIPTION	ITEM
2	V000897.B05	M12 X 25	SET SCREW M12X25	20
6	V002935.B05	M12 x 25	SCREW HEX HEAD M12X25	19
14	V001602.B05	M16	NUT HEX M16	18
1	V001785.B06	X00639-061	SEAL	17
20	V000832.B05	WLP-M16	WASHER M16	16
12	V000832.B05	WLP-M12	WASHER M12	15
6	V003684.B05	SCP-M16-55	SCREW HEX HEAD M16X55	14
6	V002847.B05	SCP-M12-50	SCREW HEX HEAD M12X50	13
3	V007076.B05	SCP-M08-30	SCREW HEX HEAD M8X30	12
1	V061511.B04	S15348-001	RETAINER - BEARING	11
1	V003281.B04	S10621-001	COUPLING-HALF (MACHINING)	10
1	V027663.B04	S10620-001	KEY	9
14	V003401.B04	S10619-001	COUPLING DRIVE STUD	8
14	V001289.B06	S10618-001	BUSHING-HEAD PULLEY	7
1	V003280.B04	S10405-001	CAP - BEARING	6
1	V061510.B04	S15347-001	RETAINER - BEARING	5
1	V061509.B04	S15346-001	HEAD PULLEY	4
1	V003294.B04	S10398-001	COVER - BEARING	3
1	V000882.B05	S10397-001	GASKET	2
1	V001235.B06	B000551	RADIAL BALL BRAING	1

UNITED STATES OF AMERICA
 PREPARED BY: SVEVEN
 CHECKED BY: MJD(RM)
 DATE: 12/11/2018
 CAD FILE: S15345.dwg
 Stock Equipment Company
 14450 Chillicothe Road
 Chagrin Falls, Ohio 44023
 www.stock-equipment.com
 (440)543-5000

REF. DWG: S10410
 PART NO.: S15345-001
 NEXT ASSY.: S14996
 S.O. NO.: 9102000031
 BELT DRIVE ASSEMBLY GROUP
 FEEDER FINAL ASSEMBLY
 EG 36 FEEDER
 SAP: V061508.B04
 SHEET: 1 OF 1
 SIZE: D
 STOCK NUMBER: S15345
 0

REV	DESCRIPTION	DATE	DRAWN	CHECKED	APPROVED
A	FELT WASHER REMOVER AND RETAINER RING ADDED AND TOLERANCE BLOCK ADDED	15.12.11	KANTHARAJ	MADHU	MV
B	ROLLER S10624 DRAWING REVISED , HENCE THE DRAWING IS REVISED	28.08.12	KANTHARAJ	MADHU	MV



SECTION A-A

QTY	PART NUMBER	DESCRIPTION	ITEM
2	S62772	RADIAL SHAFT SEAL	11
2	FG00001	FITTING GREASE	10
4	RR00018	RING RETAINING	9
4	WLP-M10	WASHER LOCK	8
4	SCP-M10-40	SCREW HEX HEAD	7
2	S10626-001	JAM NUT	6
2	B000077	BEARING	5
4	S10366-001	GASKET	4
2	S10368-001	COVER - HOUSING	3
2	S10373-001	HOUSING - BEARING	2
1	S10624-001	ROLLER - WEIGH SPAN	1

TOLERANCE UNLESS OTHERWISE SPECIFIED (METRIC)

DIM. IN mm	FOR MACHINING	FOR FABRICATION
0.5 - 3	0.1	-
3 - 6	0.1	0.5
6 - 30	0.2	1
30 - 120	0.3	1.5
120 - 315	0.5	2
315 - 1000	0.8	3
FOR ANGELS	±1/2	±1/2

DECIMAL DIMENSIONS .X : 0.25mm
.XX : 0.12mm

MAX SURFACE ROUGHNESS FOR MACHINED SURFACE TO BE : 6.3 µRa
DEBURR AND BREAK ALL SHARP EDGES AND CORNERS.
GEOMETRIC TOLERANCE PER ISO 1101:1983 STANDARD
DEBURR AND BREAK ALL THE SHARP EDGES AND CORNERS

REV	PREPARED BY	DATE
B1	KANTHARAJ	28.08.12
A3	KANTHARAJ	15.12.11

UNLESS OTHERWISE SPECIFIED
DECIMAL DIMENSIONS .X : 0.25
.XX : 0.125
FRACTIONAL DIMENSIONS ± 1/16
ANGLE DIMENSIONS ± 1/2°
BURNOUT DIMENSIONS ± .060
MAX. SURFACE ROUGHNESS FOR MACHINED SURFACES 125
FOR BURNING SURFACES 500
DEBURR AND BREAK ALL SHARP EDGES AND CORNERS (GEOMETRIC TOLERANCE PER ANSI Y14.5)

REVISION IS INTERCHANGEABLE WITH ORIGINAL

PREPARED BY Pawar
CHECKED BY RAM
DATE 11-07-2011
CAD FILE S10365.idw

Stock Equipment Company
16490 Chillicothe Road
Chagrin Falls, Ohio 44023
www.stockequipment.com
(440)543-6000

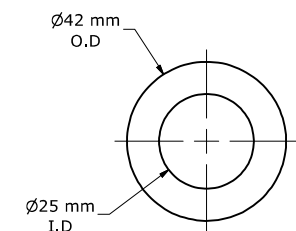
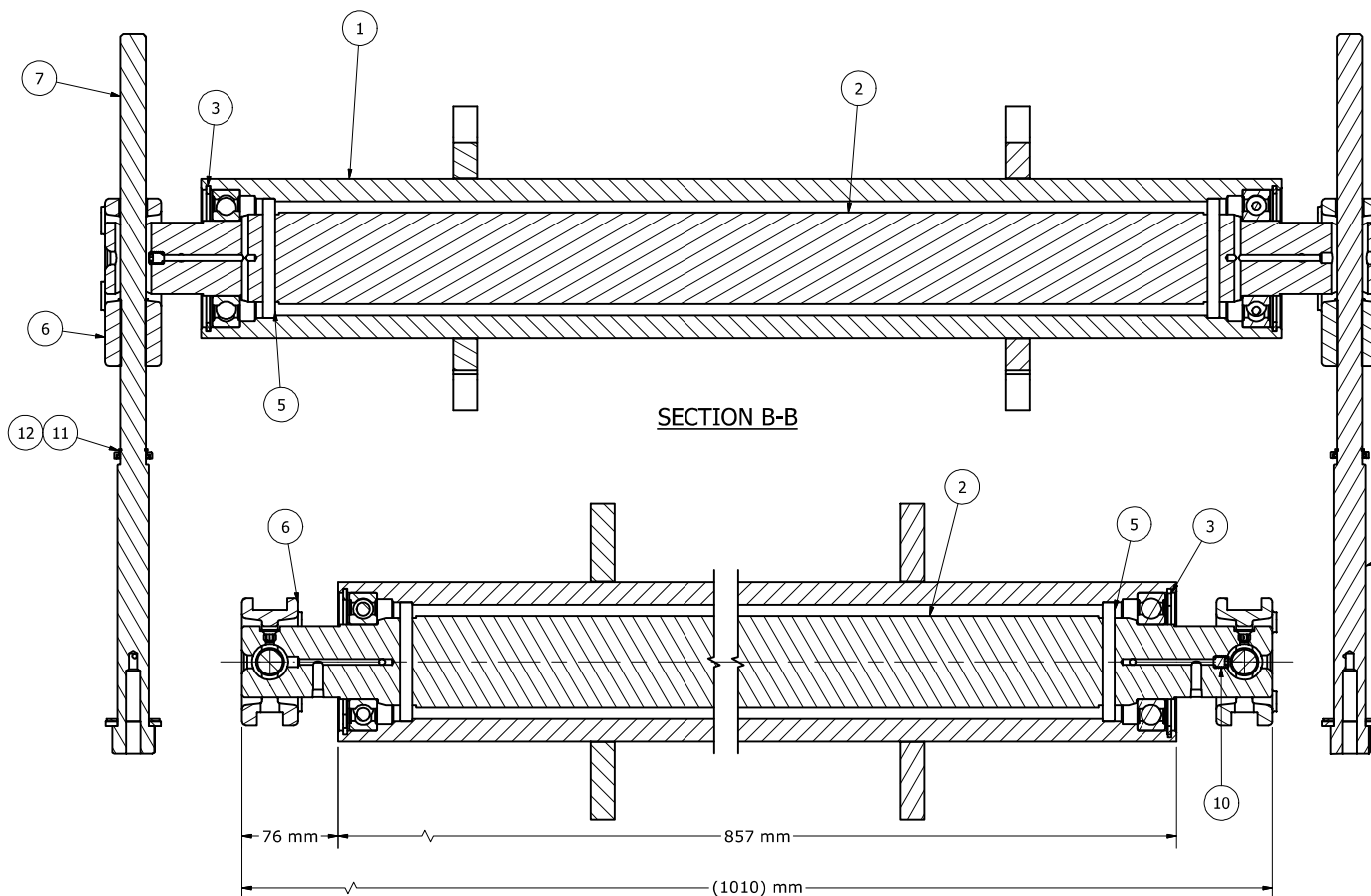
REF. DWG NS306138 NEXT ASSY. S10301 S.O. NO.
PART NO. NS306138-0
MATL. SEE DRAWING
QTY. _____

INFORMATION CONTAINED ON THIS DRAWING IS CONFIDENTIAL AND PROPRIETARY TO STOCK EQUIPMENT COMPANY AND MAY NOT BE REPRODUCED OR USED WITHOUT THE EXPRESS WRITTEN CONSENT OF STOCK EQUIPMENT COMPANY

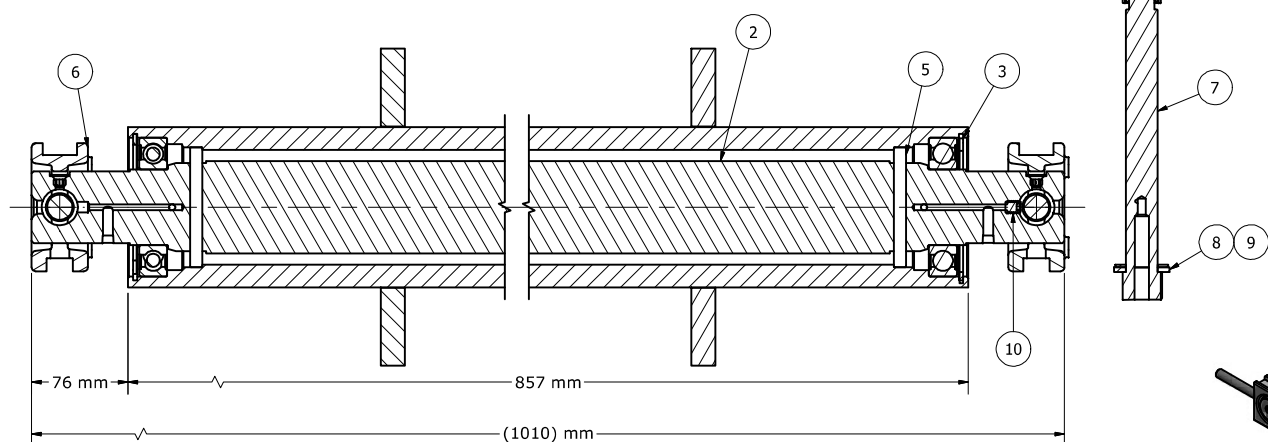
**WEIGH SPAN ROLLER ASSEMBLY
FEEDER FINAL ASSEMBLY
EG 3651 FEEDER**

stock schenckprocess group

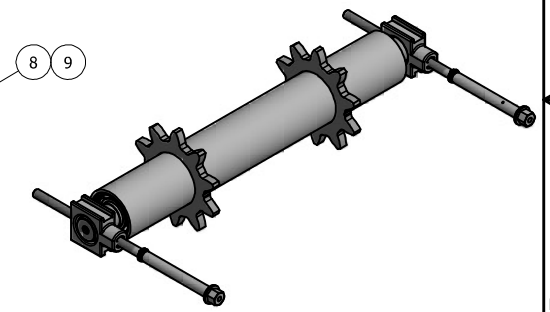
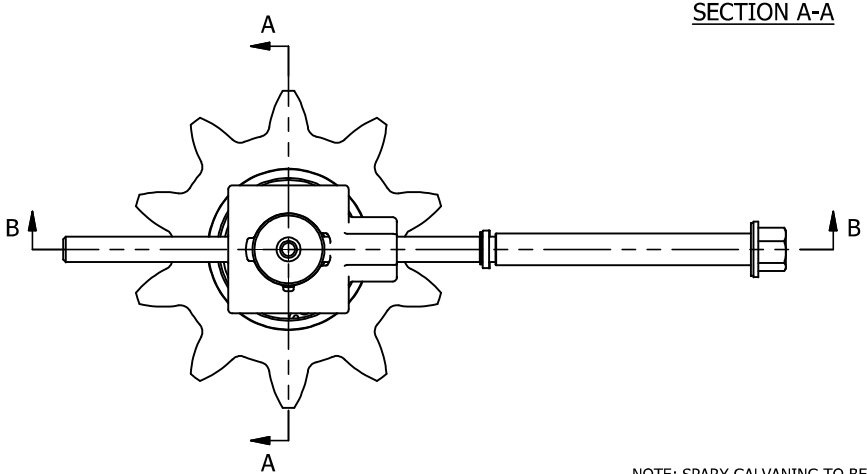
SHEET 1 OF 1
S10365
REV B



DETAIL OF ITEM -9
2mm THK
TEFLON SEAL



SECTION A-A



2	V001258.B06	562782	RETAINER GREASE 20X30X5		12
2	V001257.B06	90967A235	EXTERNAL RETAINING RING DIA 20		11
1	V001619.B05	92605A156	SET SCREW M10		10
2		SEAL	TEFLON SEAL		9
2	V000835.B05	A24	PLAIN WASHER M24		8
2	V003193.B04	S10809-001	SCREW - TAKE-UP COC	0.22 kg	7
2	V003284.B04	S10641-001	BLOCK - COC TAKE-UP	0.28 kg	6
2	V001259.B06	RG00246	RETAINER GREASE 2.75 SFT 3.75 X 0.375	0.08 kg	5
2	V001254.B06	B000553	BEARING DEEP GROOVE BALL 6212-Z	0.09 kg	4
2	V001277.B06	RR00034	RING RETAINING INTERNAL	0.05 kg	3
1	V003190.B04	S10394-001	SHAFT BELT TAKEUP	29.73 kg	2
1	V061498.B04	S15271-001	WELDMNT SPROCKET COC TAKEUP	11.60 kg	1
QTY	STOCK NUMBER	PART NUMBER	DESCRIPTION	MASS	ITEM

P/N: 15270-001 SAP: V061497.B04

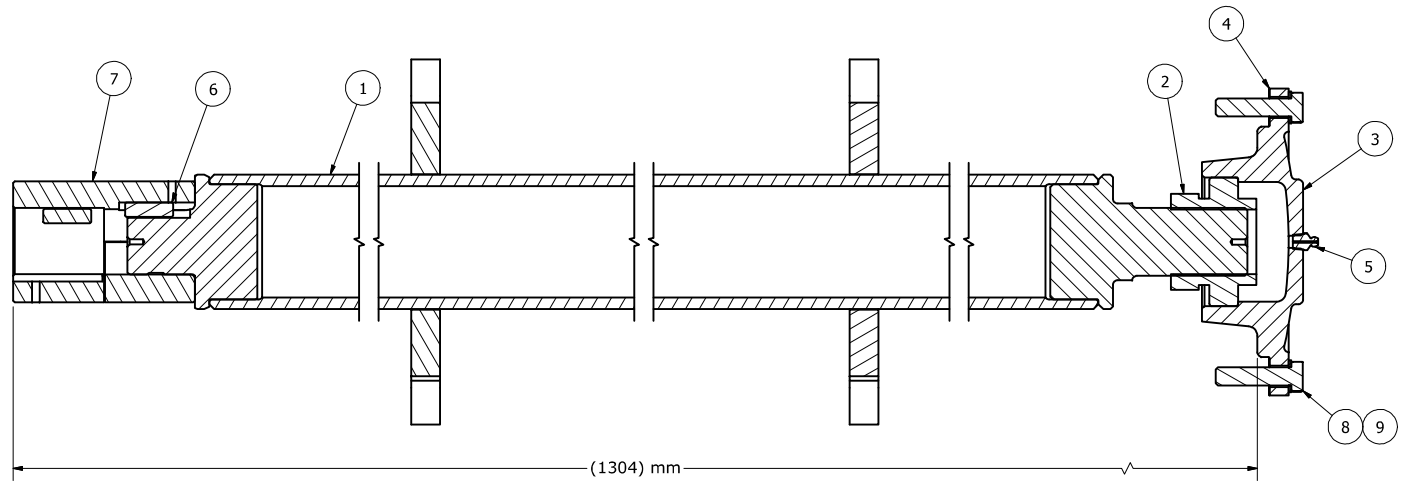
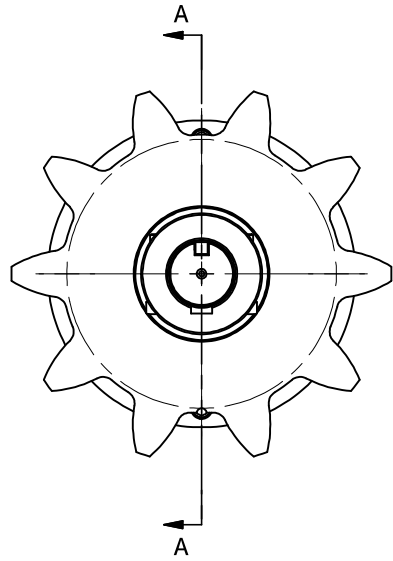
REF. DWG	S10604	NEXT ASSY.	S14996	S.O. NO.	9102000031
PART NO.	S15270-001	INFORMATION CONTAINED ON THIS DRAWING IS CONFIDENTIAL AND PROPRIETARY TO STOCK EQUIPMENT COMPANY AND MAY NOT BE REPRODUCED OR USED WITHOUT THE EXPRESS WRITTEN CONSENT OF STOCK EQUIPMENT COMPANY.			
MATL (IMP.)	SEE DRAWING	ASSEMBLY - COC TAKE-UP GROUP			
MATL (MET.)		FEEEDER FINAL ASSEMBLY			
		EG 36 FEEDER			
		SAP: V061497.B04			
QTY.	SEE CHART /	SHEET	SIZE	S15270	REV
		1 OF 1	C		0

UNLESS OTHERWISE SPECIFIED UNITS SHOWN IN mm [in]	
FRACTIONAL DIMENSIONS	DECIMAL DIMENSIONS
3/16 ± 0.01	0.1875 ± 0.005
1/8 ± 0.01	0.125 ± 0.005
5/16 ± 0.01	0.3125 ± 0.005
3/8 ± 0.01	0.375 ± 0.005
1/2 ± 0.01	0.5 ± 0.005
5/8 ± 0.01	0.625 ± 0.005
3/4 ± 0.01	0.75 ± 0.005
7/8 ± 0.01	0.875 ± 0.005
1 ± 0.01	1.0 ± 0.005
1 1/8 ± 0.01	1.125 ± 0.005
1 1/4 ± 0.01	1.25 ± 0.005
1 3/8 ± 0.01	1.375 ± 0.005
1 1/2 ± 0.01	1.5 ± 0.005
1 5/8 ± 0.01	1.625 ± 0.005
1 3/4 ± 0.01	1.75 ± 0.005
1 7/8 ± 0.01	1.875 ± 0.005
2 ± 0.01	2.0 ± 0.005
2 1/8 ± 0.01	2.125 ± 0.005
2 1/4 ± 0.01	2.25 ± 0.005
2 3/8 ± 0.01	2.375 ± 0.005
2 1/2 ± 0.01	2.5 ± 0.005
2 5/8 ± 0.01	2.625 ± 0.005
2 3/4 ± 0.01	2.75 ± 0.005
2 7/8 ± 0.01	2.875 ± 0.005
3 ± 0.01	3.0 ± 0.005
FRACTIONAL DIMENSIONS	
3/16 ± 0.01	0.1875 ± 0.005
1/8 ± 0.01	0.125 ± 0.005
5/16 ± 0.01	0.3125 ± 0.005
3/8 ± 0.01	0.375 ± 0.005
1/2 ± 0.01	0.5 ± 0.005
5/8 ± 0.01	0.625 ± 0.005
3/4 ± 0.01	0.75 ± 0.005
7/8 ± 0.01	0.875 ± 0.005
1 ± 0.01	1.0 ± 0.005
1 1/8 ± 0.01	1.125 ± 0.005
1 1/4 ± 0.01	1.25 ± 0.005
1 3/8 ± 0.01	1.375 ± 0.005
1 1/2 ± 0.01	1.5 ± 0.005
1 5/8 ± 0.01	1.625 ± 0.005
1 3/4 ± 0.01	1.75 ± 0.005
1 7/8 ± 0.01	1.875 ± 0.005
2 ± 0.01	2.0 ± 0.005
2 1/8 ± 0.01	2.125 ± 0.005
2 1/4 ± 0.01	2.25 ± 0.005
2 3/8 ± 0.01	2.375 ± 0.005
2 1/2 ± 0.01	2.5 ± 0.005
2 5/8 ± 0.01	2.625 ± 0.005
2 3/4 ± 0.01	2.75 ± 0.005
2 7/8 ± 0.01	2.875 ± 0.005
3 ± 0.01	3.0 ± 0.005
HOLE SURFACE ROUGHNESS	
MACHINED	3.2 (125 μin)
BURNED	12.5 (500 μin)
DEBURR AND BREAK ALL SHARP EDGES AND CORNERS	
PREPARED BY	DATE
CHECKED BY	DATE
DATE	
CAD FILE	
Stock Equipment Company 16490 Chillicothe Road Chagrin Falls, Ohio 44023 www.stockequipment.com (440)543-6000	

NOTE: SPARY GALVANING TO BE DONE



SHEET	SIZE	S15270	REV
1 OF 1	C		0



SECTION A-A

NOTE: SPARY GALVANING TO BE DO BE DONE.

QTY	SAP NUMBER	PART NUMBER	DESCRIPTION	ITEM
4	V004047.B05	WLP-M12	WASHER LOCK REGULAR M12	9
4	V004922.B05	SCP-M12-50	SCREW HEX HEAD CAP PLATED M12x1.75 X 50MM	8
1	V061496.B04	S15269-001	SHAFT COUPLING-COC DRIVE	7
2	V003176.B04	S10437-029	KEY SQUARE ENDS	6
1	V000046.B05	FG00001	GREASE NIPPLE 3/8"	5
1	V003174.B04	S10409-001	GASKET HOUSING COC	4
1	V003173.B04	S10408-001	HOUSING - BEARING	3
1	V001252.B06	B000111	BEARING ECCN.LOC COLLER YEL 209 2F	2
1	V061493.B04	S15267-001	SHAFT WELDMNT COC DRIVE- ASSEMBLY	1

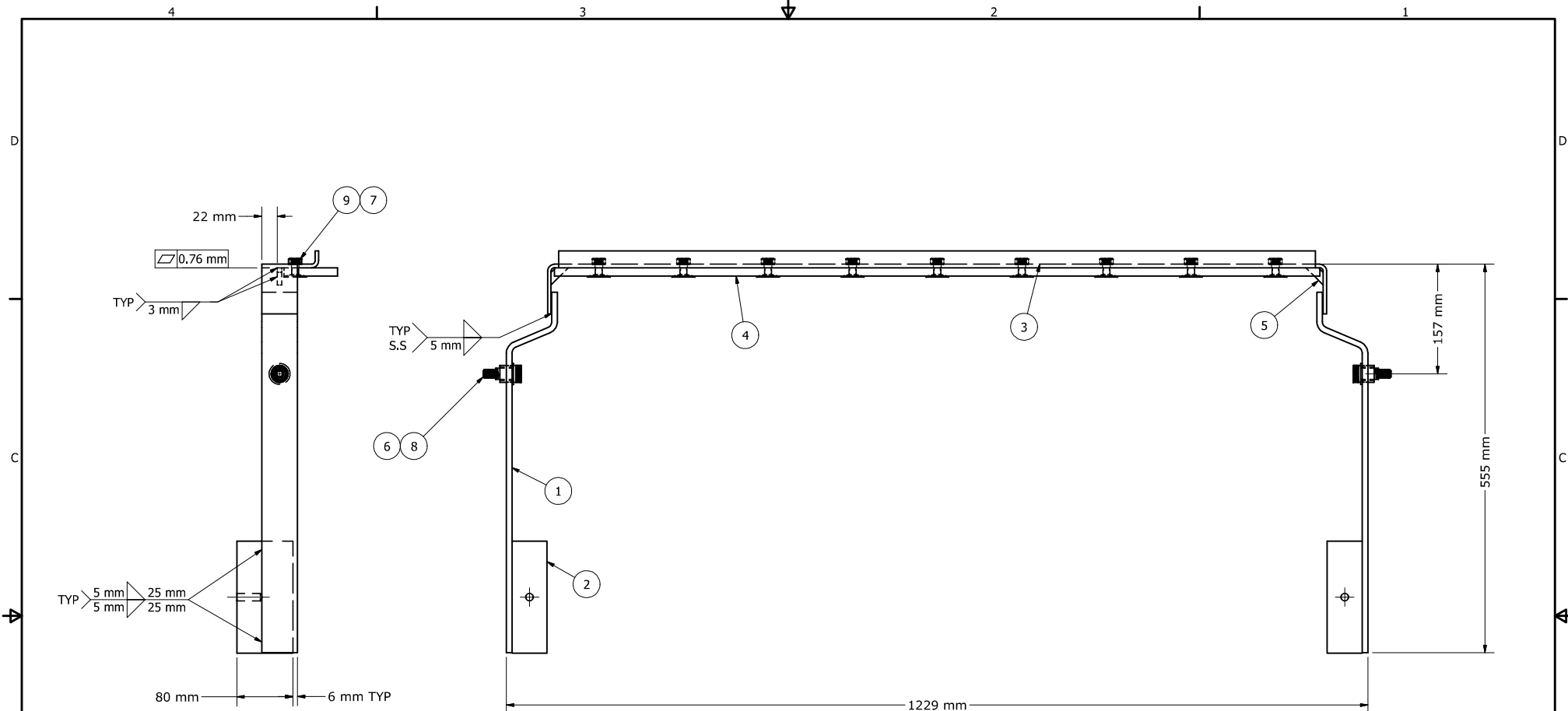
P/N: S15266-001 SAP: V061492.B04 S.O. NO. 9102000031

REVISION	PREPARED BY	DATE
CHECKED BY	MADHU	
DATE	13/11/2018	
CAD FILE	S15266.idw	
Stock Equipment Company 16490 Chillicothe Road Chagrin Falls, Ohio 44023 www.stockequipment.com (440)543-6000		

REF. DWG	S10438
PART NO.	S15266-001
MATL (IMP.)	SEE DRAWING
MATL (MET.)	
QTY.	SEE DRAWING /

INFORMATION CONTAINED ON THIS DRAWING IS CONFIDENTIAL AND PROPRIETARY TO STOCK EQUIPMENT COMPANY AND MAY NOT BE REPRODUCED OR USED WITHOUT THE EXPRESS WRITTEN CONSENT OF STOCK EQUIPMENT COMPANY	
ASSEMBLY - COC DRIVE FEEDER FINAL ASSEMBLY EG 36 FEEDER SAP: V061492.B04	
SHEET	1 OF 1
SHEET SIZE	C
S15266	
REV	0

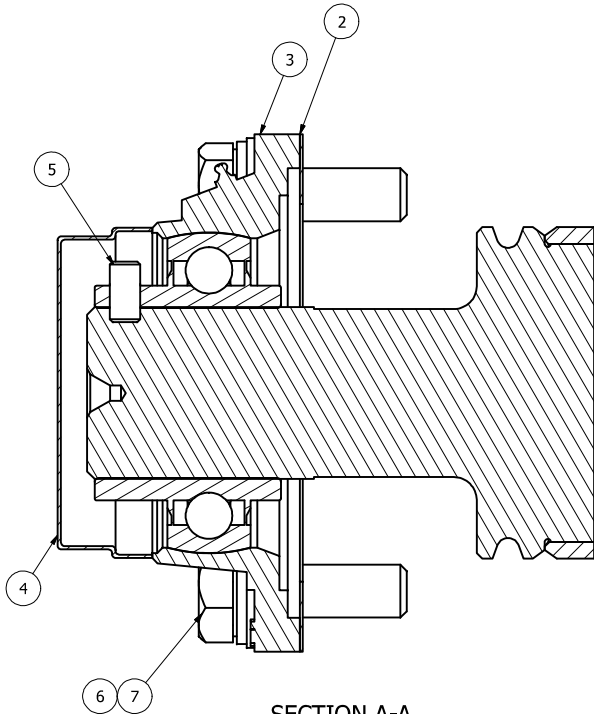
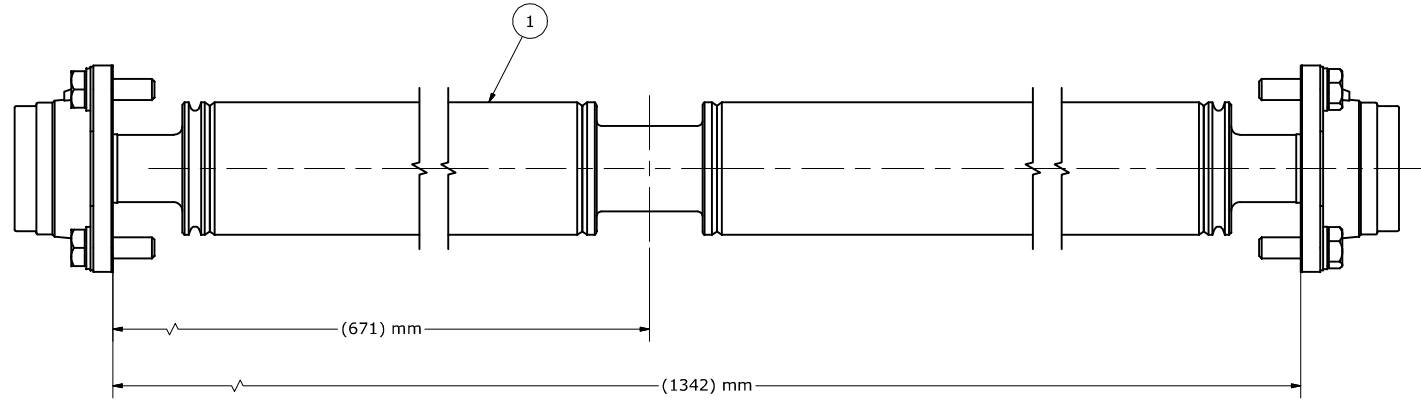
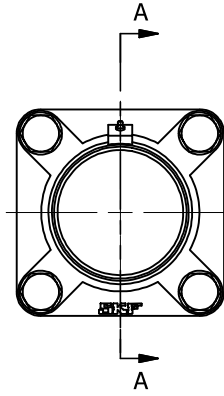




9	V000469.B05	NUT M10	NUT LOCK M10	9
2	V003218.B04	S10900-001	SCREW SOCKET HEAD SHOULDER	8
9	V006687.B04	F002591	BOLT ELEVATOR M10	7
2	V003326.B04	S10901-001	BRG SLV FLG	6
2	V003741.B04	S10649-001	GUSSET BELT SCRAPER	5
1	V000494.B06	S10648-001	SCRAPER - BLADE, RUBBER	4
1	V003740.B04	S10647-001	SUPPORT BLADE	3
2	V061500.B04	S15197-001	BAR COUNTERWEIGHT	2
2	V003738.B04	S10645-001	ARM BELT SCRAPER	1
QTY	SAP NUMBER	PART NUMBER	DESCRIPTION	ITEM

REF. DWG	S10650	NEXT ASSY.	S.O. NO. 9102000031
PART NO.	S15196-001	INFORMATION CONTAINED ON THIS DRAWING IS CONFIDENTIAL AND PROPRIETARY TO STOCK EQUIPMENT COMPANY AND MAY NOT BE REPRODUCED OR USED WITHOUT THE EXPRESS WRITTEN CONSENT OF STOCK EQUIPMENT COMPANY	
MATL (IMP.)	SEE DRAWING	BELT SCRAPER ASSEMBLY	
MATL (MET.)		FEEDER FINAL ASSEMBLY	
		EG 36 FEEDER	
QTY.	SEE DRAWING /	SAP: V061499.B04	
		SHEET SIZE	REV
		1 OF 1	C
		S15196	0

UNLESS OTHERWISE SPECIFIED	
UNITS SHOWN IN mm [in]	
GEOMETRIC TOLERANCE PER ASME Y14.5	± 0.25 (0.010)
DECIMAL DIMENSIONS	± 0.13 (0.005)
FRACTIONAL DIMENSIONS	± 0.13 (0.005)
ANGLE DIMENSIONS	± 0.5 (0.020)
BURRL/DIMENSIONS	± 1.5 (0.060)
PREPARED BY	DATE
CHECKED BY	DATE
CAD FILE	
Stock Equipment Company 16490 Chillicothe Road Chagrin Falls, Ohio 44023 www.stockequipment.com (440)543-6000	
MAX. SURFACE ROUGHNESS	3.0 (125 μin/V)
MACHINED	3.0 (125 μin/V)
BURROCK	3.0 (125 μin/V)
DEBUR AND BREAK ALL SHARP EDGES AND CORNERS	



SECTION A-A

8	V001067.B05	SCP-M14-45	SCREW HEX HEAD M14 X 45mm	7
8	V004419.B05	WSP-M14	WASHER FLAT M14	6
1	V002536.B05	BS 4168 - M8 x 16	SCREW CRUB M8 x16mm	5
2	V003327.B04	S10934-001	COVER BEARING FY45TF	4
2	V001234.B06	FY 45 TF	BEARING FLANGE EG3651 FY45TF	3
2	V001560.B06	S10623-001	GASKET - INLET ROLLER	2
1	V061481.B04	S15272-001	INLET SUPPORT ROLLER WLDT & M/C	1
QTY	SAP NUMBER	PART NUMBER	DESCRIPTION	ITEM

P/N: 15192-001, SAP: V061480.B04

NEXT ASSY: S14996 S.O. NO. 9102000031

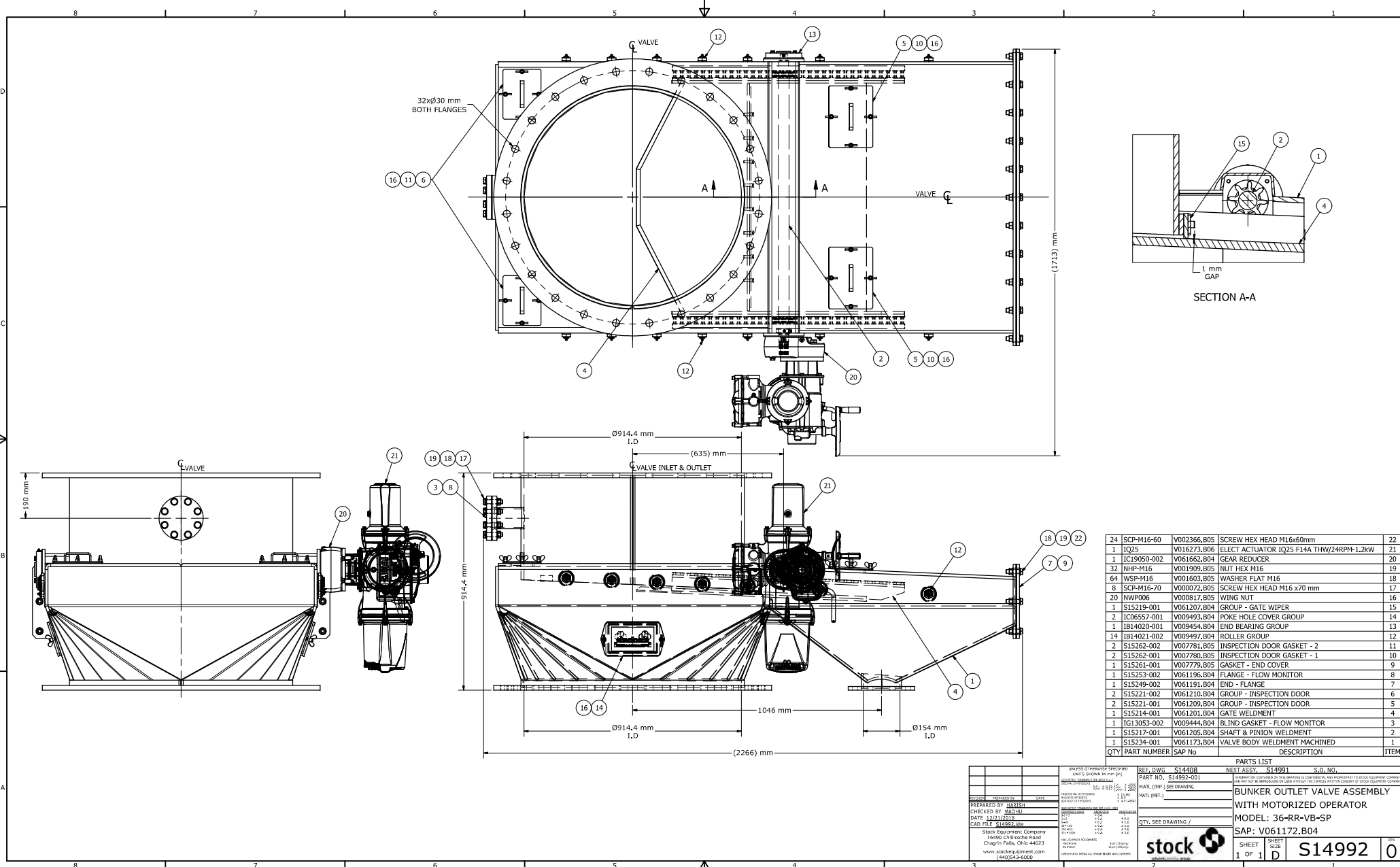
INFORMATION CONTAINED ON THIS DRAWING IS CONFIDENTIAL AND PROPRIETARY TO STOCK EQUIPMENT COMPANY AND MAY NOT BE REPRODUCED OR USED WITHOUT THE EXPRESS WRITTEN CONSENT OF STOCK EQUIPMENT COMPANY

UNLESS OTHERWISE SPECIFIED UNITS SHOWN IN mm [in]	
GEOMETRIC TOLERANCE PER ASME Y14.5	
DECIMAL DIMENSIONS	± 0.25 (± 0.010)
FRACTIONAL DIMENSIONS	± 0.13 (± 0.005)
ANGLE DIMENSIONS	$\pm 0.5^\circ$ ($\pm 0.02^\circ$)
BURNDOT DIMENSIONS	± 1.5 (± 0.06)
GEOMETRIC TOLERANCE PER ISO 1101:2004	
POSITION (mm)	± 0.1
ORIENTATION	± 0.2
FORM	± 0.1
SIZE	± 0.2
LOCATION	± 0.5
ORIENTATION	± 0.5
FORM	± 0.2
SIZE	± 0.5
LOCATION	± 0.2
MAX. SURFACE ROUGHNESS MACHINED 3.2 (125 μin) BURNED 12.5 (500 μin)	
DEBUR AND BREAK ALL SHARP EDGES AND CORNERS	

REF. DWG	S15192-001
PART NO.	S15192-001
MATL. (IMP.)	SEE DRAWING
MATL. (MET.)	
QTY.	SEE CHART /

INLET SUPPORT ROLLER GROUP	
FEEDER FINAL ASSEMBLY	
EG 36 FEEDER	
SAP: V061480.B04	
SHEET	SHEET
1 OF 1	SIZE
C	S15192
REV	0





QTY	PART NUMBER	SAP No	DESCRIPTION	ITEM
24	SCP-M16-60	V002366.B05	SCREW HEX HEAD M16x60mm	22
1	IQ25	V016273.B06	ELECT ACTUATOR IQ25 F14A THW/24RPM-1.2kW	21
1	IC19050-002	V051652.B04	GEAR REDUCER	20
32	NHP-M16	V001909.B05	NUT HEX M16	19
64	WSP-M16	V0016203.B05	WASHER FLAT M16	18
8	SCP-M16-70	V000072.B05	SCREW HEX HEAD M16 x70 mm	17
20	NWP006	V000817.B05	WING NUT	16
1	S15219-001	V061207.B04	GROUP - GATE WIPER	15
2	IC06557-001	V009493.B04	POKE HOLE COVER GROUP	14
1	IB14020-001	V009454.B04	END BEARING GROUP	13
14	IB14021-002	V009497.B04	ROLLER GROUP	12
2	S15262-002	V007781.B05	INSPECTION DOOR GASKET - 2	11
2	S15262-001	V007780.B05	INSPECTION DOOR GASKET - 1	10
1	S15261-001	V007779.B05	GASKET - END COVER	9
1	S15253-002	V061196.B04	FLANGE - FLOW MONITOR	8
1	S15249-002	V061191.B04	END - FLANGE	7
2	S15221-002	V061210.B04	GROUP - INSPECTION DOOR	6
2	S15221-001	V061209.B04	GROUP - INSPECTION DOOR	5
1	S15214-001	V061201.B04	GATE WELDMENT	4
1	IG13053-002	V009444.B04	BLIND GASKET - FLOW MONITOR	3
1	S15217-001	V061205.B04	SHAFT & PINION WELDMENT	2
1	S15234-001	V061173.B04	VALVE BODY WELDMENT MACHINED	1

PREPARED BY: JAS124 CHECKED BY: JAS124 DATE: 12/01/2015 CAD FILE: S14992.dwg Stock Equipment Company 16400 Chillicothe Road Chagrin Falls, Ohio 44023 www.stockequipment.com (440)543-5000		REF. DWG: S14408 PART NO.: S14992-001 NEXT ASSY: S14991 BUNKER OUTLET VALVE ASSEMBLY WITH MOTORIZED OPERATOR MODEL: 36-RR-VB-SP SAP: V061172.B04	
STOCK EQUIPMENT COMPANY 16400 CHILICOTHE ROAD CHAGRIN FALLS, OHIO 44023 WWW.STOCKEQUIPMENT.COM (440)543-5000		SHEET: 1 OF 1 SIZE: D S14992 0	