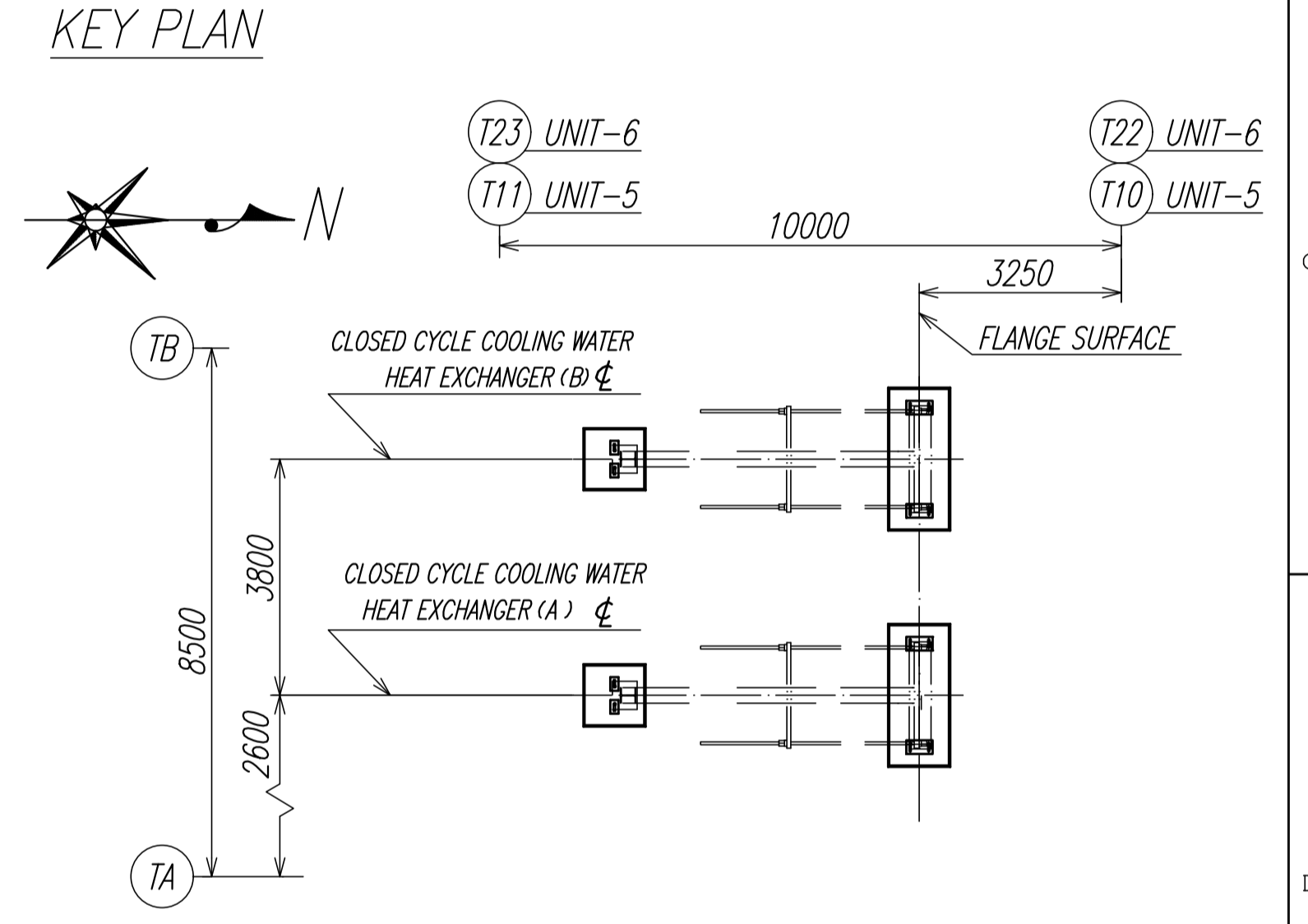


DESCRIPTION	C.C.C. WATER	SEA WATER
TEMPERATURE IN	42.48 deg.C	33.0 deg.C
TEMPERATURE OUT	37.10 deg.C	38.47 deg.C
FLOW RATE	3960 m ³ /hr	3960 m ³ /hr
DESIGN PRESSURE	11.0 bar (g)	10.0 bar (g)
DESIGN TEMPERATURE	60.00 deg.C	40.00 deg.C
No. OF PASS	1	1
HYDROTEST PRESSURE	16.5 bar (g)	15.0 bar (g)
NO. OF PLATES	417	
SURFACE AREA	1108.05 m ²	

REFERENCE DRAWING
 FOUNDATION OUTLINE FOR CLOSED CYCLE COOLING HEAT EXCHANGER :
 TJB56-L1-OFF-C-PG-C-DFN-3028 (1KV009388)



WEIGHT (EACH COOLER) UNIT : kg

	TOTAL
ASSEMBLY	11910
OPERATING	17980

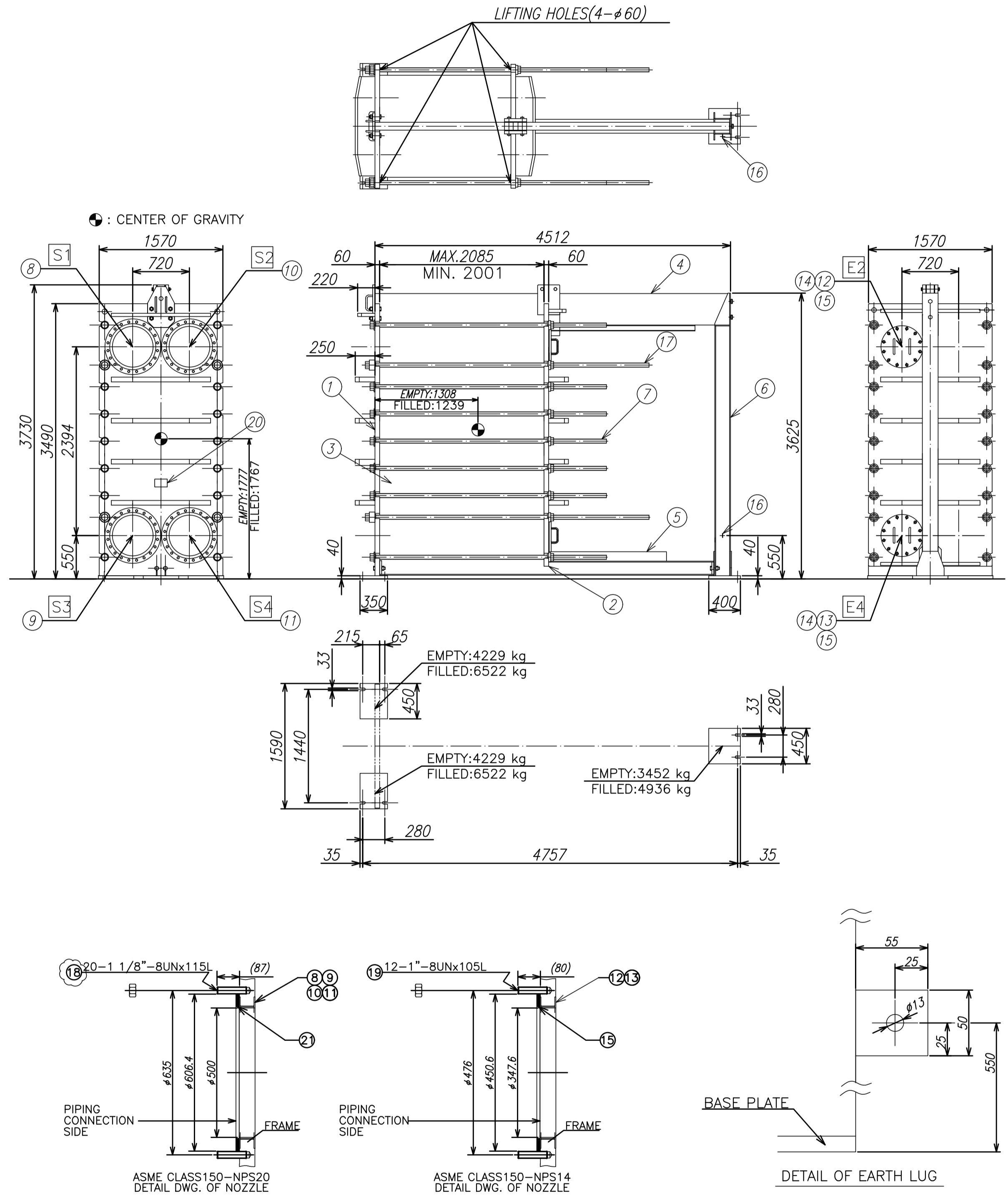
REV	DATE	DESCRIPTION	BY	CHKD	APPD
2	JAN.27.2022	ISSUED FOR AS-BUILT	D.W.	Y.J.	Y.J.
1	AUG.26.2019	REVISED AS DESIGN PROGRESS	S.K.	Y.J.	Y.J.
0	JUN.24.2019	ISSUED FOR CONSTRUCTION	N.K.	Y.J.	Y.J.

OWNER: PT.Bhumi Jati Power
 PROJECT TITLE: TANJUNG JATI B EXPANSION (JAWA-4) COAL FIRED STEAM POWER PLANT 2 x 1,000 MW
 OWNER'S ENGINEER: POYRY
 EPC CONTRACTORS: Sumitomo Corporation, PT. Wasa Mitra Engineering, AvantiPower Japan Ltd.
 PROJECT DRAWING NO. TJB56-L1-OFF-C-PG-M-DRD-2636
 APPD INOKU YJ SCALE - TITLE OUTLINE DRAWING FOR CCCW HEAT EXCHANGER
 CHKD INOKU YJ UNITS/VIEW
 BY HRANO D.S.H. ISO/PLM/ST/ROD
 EPC LOT SUB-CONTRACTOR TOSHIBA
 DRAWING NO. 1KV009462
 SHEET NO. 1 OF 1

NOZZLE ORIENTATION	CONNECTION
S1 C.C.C.W. INLET	ASME CLASS150-NPS20(R.F) INCLUDE STUD B&N
S3 C.C.C.W. OUTLET	ASME CLASS150-NPS20(R.F) INCLUDE STUD B&N
S4 SEA WATER INLET	ASME CLASS150-NPS20(R.F) INCLUDE STUD B&N
S2 SEA WATER OUTLET	ASME CLASS150-NPS20(R.F) INCLUDE STUD B&N
E2 SEA WATER INSPECTION NOZZLE	ASME CLASS150-NPS14(R.F) INCLUDE STUD B&N/WITH BLIND FLANGE
E4 SEA WATER INSPECTION NOZZLE	ASME CLASS150-NPS14(R.F) INCLUDE STUD B&N/WITH BLIND FLANGE
MASS(EMPTY)	11910 kg
MASS(FILLED)	17980 kg
ATTACHMENT	RATCHET SPANNER C.S. 2"-8UN 1 PC ANCHOR BOLT & NUT SS400 M30x400L L-TYPE 6 SETS
JOB NO.	M211995 CE 1241
EQUIP. NAME	CLOSED CYCLE COOLING WATER HEAT EXCHANGER A/B
ITEM NO.	50/60PGD11/12 AC010
APPLICABLE CODE	ASME Sect.VIII without stamp

TIGHTENING BOLT WITH COVER AND GREASE

NO.	PART NAME	REQ'D	MATERIALS	REMARKS
21	FLANGE GASKET	4	V/# GF300	t3,ASME CLASS150-NPS20
20	NAME PLATE	1	SUS304	
19	STUD BOLT & NUT	12x 2SETS	SS400/SS400	1"-8UNx105L
18	STUD BOLT & NUT	20x 4SETS	SS400/SS400	1 1/8"-8UNx115L
17	TIGHTENING BOLT & NUT	4SETS	SA-540 Gr.B23.Cl.2/S45C	2"-8UNx 3550L
16	EARTH LUG	1	SUS304	t6
15	FLANGE GASKET	2	V/# GF300	t3,ASME CLASS150-NPS14
14	BLIND FLANGE	2	SS400(Ti LINING)	ASME CLASS150-NPS14
13	E.NOZZLE	1	TP340	
12	E.NOZZLE	1	TP340	
11	S.NOZZLE	1	TP340	
10	S.NOZZLE	1	TP340	
9	S.NOZZLE	1	SUS316L	
8	S.NOZZLE	1	SUS316L	
7	TIGHTENING BOLT & NUT	14 SETS	SNB7/S45C	2"-8UNx 2950L
6	GUIDE BAR SUPPORT	1	SS400	
5	LOWER GUIDE BAR	1	SUS304/SS400	
4	UPPER GUIDE BAR	1	SUS304	
3	PLATE	417	TP270	
2	E.FRAME	1	SS400	
1	S.FRAME	1	SS400	



KKS NUMBER		EQUIPMENT
UNIT 5	UNIT 6	
50PGD11 AC010	60PGD11 AC010	CLOSED CYCLE COOLING WATER HEAT EXCHANGER A
50PGD12 AC010	60PGD12 AC010	CLOSED CYCLE COOLING WATER HEAT EXCHANGER B

ISSUED FOR AS-BUILT

Y. Inoue	JUN.-27-'22	Y. Inoue	AUG.-26-'19	Y. Inoue	JUN.-24-'19	Y. Inoue	JUN.-30-'18	承認 APPROVED BY	承認 APPROVED BY	Y. Inoue	JUL.-10-'17	調査 REVIEWED BY	調査 REVIEWED BY	名義 TITLE
Y. Inoue	JUN.-27-'22	Y. Inoue	AUG.-26-'19	Y. Inoue	JUN.-24-'19	S. Kurita	JUN.-29-'18	調査 REVIEWED BY	調査 REVIEWED BY	Y. Inoue	JUL.-10-'17	担当 PREPARED BY	担当 PREPARED BY	TANJUNG JATI B RE-EXPANSION PROJECT 5&6
D. Waki	JUN.-27-'22	S. Kurita	AUG.-26-'19	N. KANUNGO	JUN.-24-'19	Y. Takagi	JUN.-29-'18	担当 PREPARED BY	担当 PREPARED BY	D. Hirano	JUL.-10-'17	調査 REVIEWED BY	調査 REVIEWED BY	2x1000MW
E		D		C		B		REVISIONS	REVISIONS					
・ISSUED FOR AS-BUILT ・Revised as design progress ・Issued for Construction ・Revised as per design progress								図面番号 DRAWING NO. 1KV009462 図面タイトル TITLE (ABBR) E.C.C.C.W. HX. OUTL. 品名管理 組立 M.F. 普通許容差ハ下記ニヨル 金庫附リ KDA3521 図録品・ガス切断 2D14 001 最新版ヲ適用スルコト		図面番号 DRAWING NO. 1KV009462 図面タイトル TITLE (ABBR) E.C.C.C.W. HX. OUTL. 品名管理 組立 M.F. 普通許容差ハ下記ニヨル 金庫附リ KDA3521 図録品・ガス切断 2D14 001 最新版ヲ適用スルコト		図面番号 DRAWING NO. 1KV009462 図面タイトル TITLE (ABBR) E.C.C.C.W. HX. OUTL. 品名管理 組立 M.F. 普通許容差ハ下記ニヨル 金庫附リ KDA3521 図録品・ガス切断 2D14 001 最新版ヲ適用スルコト		

図面番号 DRAWING NO. 1KV009462
 図面タイトル TITLE (ABBR) E.C.C.C.W. HX. OUTL.
 品名管理 組立 M.F. 普通許容差ハ下記ニヨル
 金庫附リ KDA3521
 図録品・ガス切断 2D14 001
 最新版ヲ適用スルコト

THIS DOCUMENT IS CONFIDENTIAL AND IS THE PROPERTY OF TOSHIBA CORPORATION. IT MUST NOT BE COPIED, LOANED OR TRANSFERRED. IF YOU MUST THE INFORMATION IT CONTAINS BE DISCLOSED TO ANY THIRD PARTY WITHOUT THEIR WRITTEN PERMISSION. AND PLEASE GET THEM BACK THIS DOCUMENT AFTER YOU HAVE DONE WITH IT.

REV. MARK