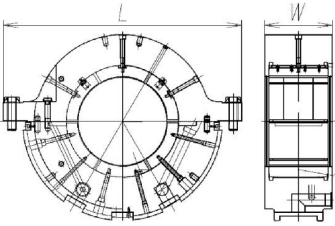
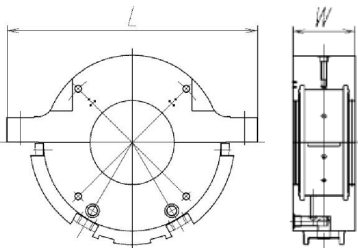
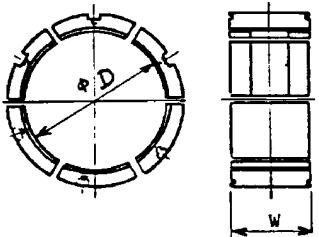


機 器 名 EQ/SYS.		用 途 名 USE		客 先 番 号 CUSTOMERS NO.		
蒸気タービン <b>STEAM TURBINE</b>		第 2 軸 受 <b>NO.2 BEARING</b>		① 製 造 番 号 JOB NO.		
				② 類 別 MANUF.COMP.		
		M211995 CA, M211996 CA			<b>H10C00, H10C20, H10C30</b>	
③部分 番号 NO.	④ 品 名 NAME OF PART	概 略 図 OUTLINE	数 量 QUANTITY			備 考 REMARKS
			常用 WORK/ 1UNIT	常用 WORK/ 2UNIT	予備 SPARE/ 1UNIT	
18.	第 2 軸 受 <b>NO.2 BEARING</b>		1SET	2SET	1SET	L =1304 W=254  1KS142501 G-1
19.	第 2 軸 受 本 体 <b>NO.2 BEARING CASING</b>		1SET (2P)	2SET (4P)	1SET (2P)	L =1304 W=254  1KS142501 P-2-2, 2-3 (1KS139938 G-2)
20.	第 2 軸 受 パ ッ ド <b>NO.2 BEARING PAD</b>		1SET (6P)	2SET (12P)	1SET (6P)	$\phi D =432.36$ W=203.2  1KS142501 P-3-2 (2KS142281 G-1)

単 位 : mm

UNITS : mm

機器名 EQ/SYS.		用途名 USE		客先番号 CUSTOMERS NO.		
蒸気タービン <b>STEAM TURBINE</b>		第2軸受 <b>NO.2 BEARING</b>		① 製造番号 JOB NO.		M211995 CA, M211996 CA
				② 類別 MANUF.COMP.		<b>H10C00, H10C20, H10C30</b>
③部分 番号 NO.	④品名 NAME OF PART	概略図 OUTLINE	数量 QUANTITY			備考 REMARKS
			常用 WORK/ 1UNIT	常用 WORK/ 2UNIT	予備 SPARE/ 1UNIT	
21.	ロックプレート <b>LOCKING PLATE</b>	<p>2-φD 厚さ = t THICKNESS = t</p>	1SET (2P)	2SET (4P)	1SET (2P)	$\phi D = 59$ $L = 222$ $W = 102$ $t = 2.3$ 1KS142501 P-2-31 (TD167674- P-2)
22.	舌付座金 <b>TONG WASHER</b>		1SET (4P)	2SET (8P)	1SET (4P)	$d = \phi 25$ $L1 = 35$ $L2 = 45$ $T = 1.6$ 1KS142501 P-2-35 (K4TW2M24 A1)

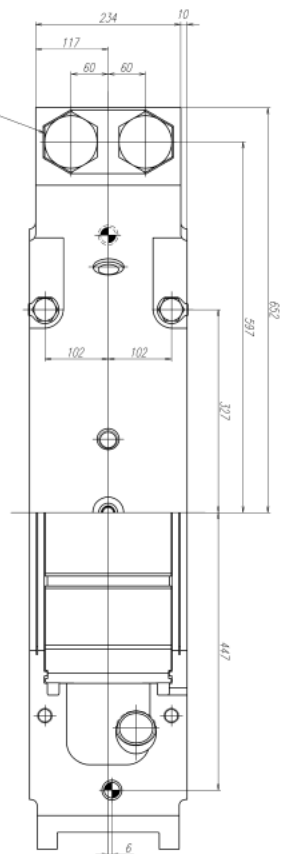
単位 : mm

UNITS : mm

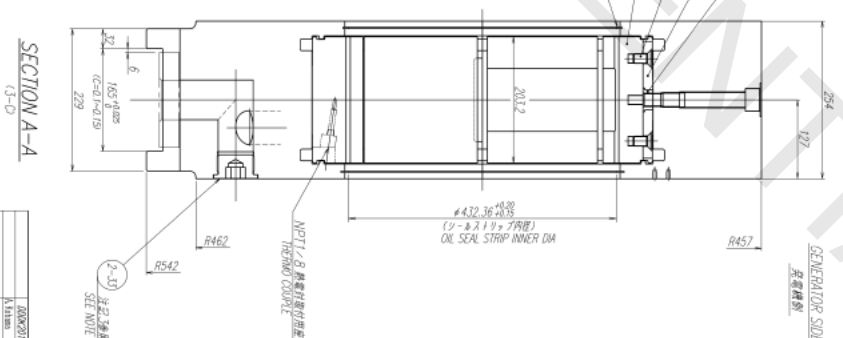
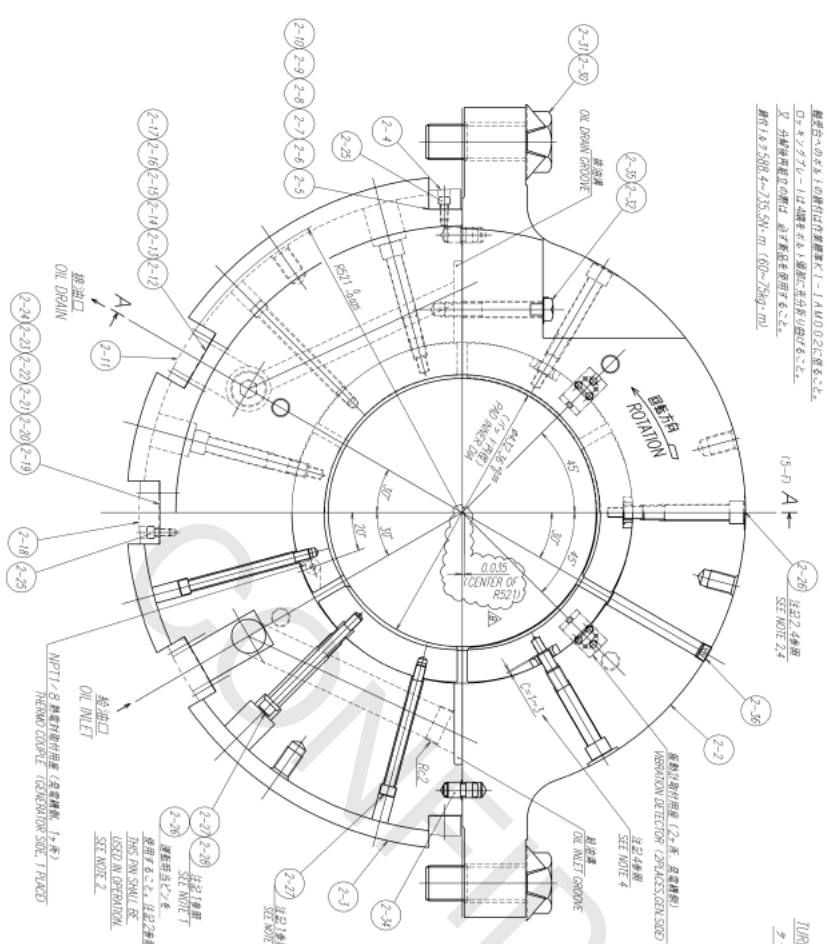
機器名 EQ/SYS.		用途名 USE		客先番号 CUSTOMERS NO.					
蒸気タービン <b>STEAM TURBINE</b>		第2軸受 <b>NO.2 BEARING</b>		① 製造番号 JOB NO.					
				M211995 CA, M211996 CA					
③部分 番号 NO.		④品名 NAME OF PART		概略図 OUTLINE		② 類別 MANUF.COMP.			
						<b>H10C00, H10C30</b>			
				数量 QUANTITY			備考 REMARKS		
				常用 WORK/ 1UNIT	常用 WORK/ 2UNIT	予備 SPARE/ 1UNIT			
23.	シム <b>SHIM</b>						t=0.05	} 1SET (6P)	
24.									0.07
25.									0.1
26.					2SET (12P)	4SET (24P)	2SET (12P)		0.2
27.									0.3
28.									0.4
							1KS142501 P-2-5~2-10 (3KS103016 P-8~12,20)		
29.	シム <b>SHIM</b>						t=0.05	} 1SET (6P)	
30.									0.07
31.									0.1
32.					2SET (12P)	4SET (24P)	2SET (12P)		0.2
33.									0.3
34.									0.4
							1KS142501 P-2-12~2-17 (3KS103016 P-2~6, 19)		
35.	シム <b>SHIM</b>						t=0.05	} 1SET (6P)	
36.									0.07
37.									0.1
38.					1SET (6P)	2SET (12P)	1SET (6P)		0.2
39.									0.3
40.									0.4
							1KS142501 P-2-19~2-24 (3KS103016 P-14~18,21)		

単位 : mm

UNITS : mm



LOCKING PLATES MUST BE REMOVED COMPLETELY AT EACH CORNER AND IN REVERSELY NEW LOCKING PLATES MUST BE USED.  
 ASSEMBLY TORQUE: 58N·m (5.9kg-m) (60~75kg-m)  
 組み立て時、1ヶ所1ヶ所必ずロックプレートを取り除き、逆方向に新しいロックプレートを取り付けます。  
 締め付けトルク: 58N・m (5.9kg・m) (60~75kg・m)



- NOTES
1. REMOVE LOCKING BOLTS AND WASHERS (P.NO. 2-27 AND 2-28) AFTER BORE MACHINING.
  2. OILY LOCKING PMS (P.NO. 2-29) PRE-BURNING NO. 2MS124592 P-1 AFTER ASSEMBLY.
  3. REMOVE EXCESSIVE FLUIDS (P.NO. 2-30) AFTER FINAL OIL FLUSHING AND CLEAN PERFECTLY AND CHECK 2 PLACES AFTER REASSEMBLY.
  4. IN ASSEMBLY CLEARANCE BE ADJUSTED 1.0 TO 3.0 mm AT THE PIN END. (P.NO. 2-30)
  5. CIRCUMFERENTIAL TO QUALITY IS SPECIFIED WITH BURNING NO. 2MS119256.

- 1 A S M  
 4 MCH : BORE  
 5 CAULKING  
 6 WIP DET ASM  
 (10) GENERAL SPEC. : PN-KS01910  
 (102) QUALITY REQUIREMENT : PN-KS01926  
 (103) CIP Dwg. : 2MS119256  
 (104) PROCEDURE OF BORG ASM. : K1-1M002

P.NO	PART NAME	Q.TY	MATERIAL (OR EQUIVALENT)
1	BEARING ASSEMBLY	1	
2-2	BEARING CASING UPR	1	JIS SC400
2-3	BEARING CASING LWR	1	JIS SC400
2-4	ADJUSTING PLATE	2	JIS SC400
2-5	SHIM (O.05)	2	JIS SUS304
2-6	SHIM (O.07)	2	JIS SUS304
2-7	SHIM (O.1)	2	JIS SUS304
2-8	SHIM (O.2)	2	JIS SUS304
2-9	SHIM (O.3)	2	JIS SUS304
2-10	SHIM (O.4)	2	JIS SUS304
2-11	ADJUSTING PLATE	2	JIS SC400
2-12	SHIM (O.05)	2	JIS SUS304
2-13	SHIM (O.07)	2	JIS SUS304
2-14	SHIM (O.1)	2	JIS SUS304
2-15	SHIM (O.2)	2	JIS SUS304
2-16	SHIM (O.3)	2	JIS SUS304
2-17	SHIM (O.4)	2	JIS SUS304
2-18	ADJUSTING PLATE	1	JIS SC400
2-19	SHIM (O.05)	1	JIS SUS304
2-20	SHIM (O.07)	1	JIS SUS304
2-21	SHIM (O.1)	1	JIS SUS304
2-22	SHIM (O.2)	1	JIS SUS304
2-23	SHIM (O.3)	1	JIS SUS304
2-24	SHIM (O.4)	1	JIS SUS304
2-25	HEXAGON SOCKET BOLT (M2)	16	JIS SCM435
2-26	LOCKING PIN	6	JIS SCM435
2-27	HEXAGON SOCKET BOLT (M2)	9	JIS S45C
2-28	FLAT WASHER	6	JIS SC400
2-29	OIL SEAL STRIP	2	JIS A5052P
2-30	HEXAGON BOLT (2.900-8H)	4	JIS SCM435
2-31	LOCKING PLATE	2	JIS SPCC
2-32	HEXAGON BOLT (M2.4)	2	JIS SCM435
2-33	PAPERELL WASHER (6.2)	2	JIS SS400
2-34	DIMEL PIN (φ 2.5)	2	10~0.506-V STEEL
2-35	2 TONGUED WASHER	4	JIS SPCC
2-36	WIPER INHERES RIGID (R3+4)	1	JIS SCM435
3-2	BEARING PAD	3	JIS SS400.W/L2
3-3	ADJUSTING PAD	3	JIS SC400
3-4	BUSH	3	JIS SACM645
3-5	SCREW (M16)	6	JIS S45C

BEARING ASSEMBLY (17' x 8')

REVISION HISTORY

NO.	DATE	REVISION
1	1.14	INITIAL DESIGN

DESIGNED BY: [Name]

CHECKED BY: [Name]

APPROVED BY: [Name]

TOSHIBA POWER SYSTEMS CORPORATION

IKS142501

Uncontrolled when printed or downloaded. Verify that this is the correct version before use. Reproduction of part or all the contents of the document is prohibited without written permission from PT. Bumi Laksana Solusi Indonesia