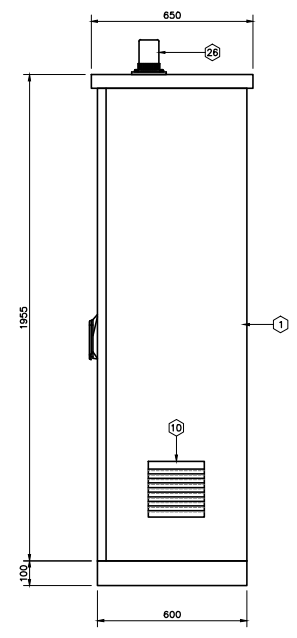
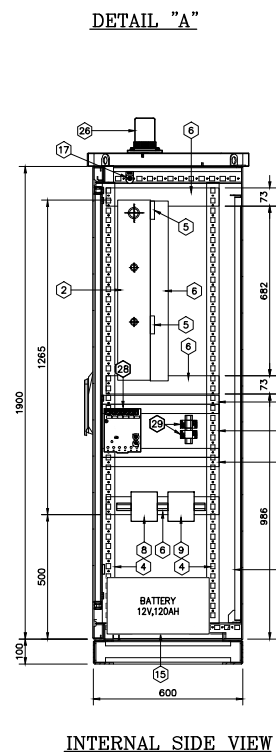
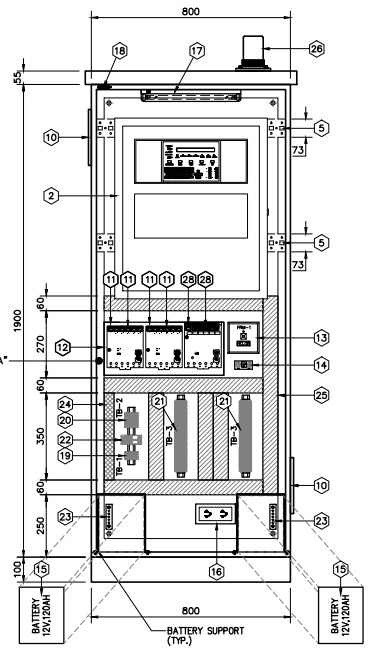
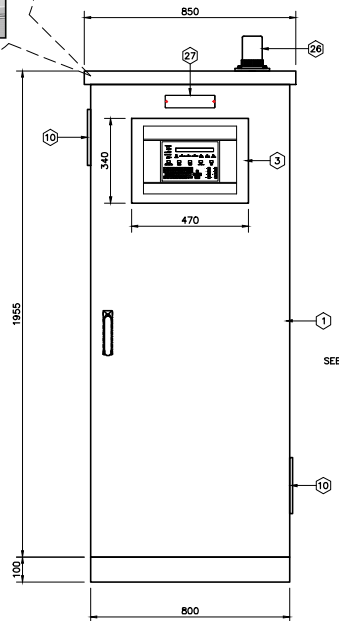
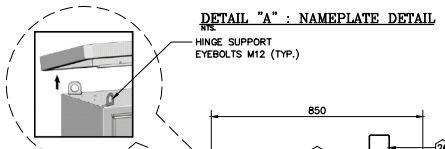
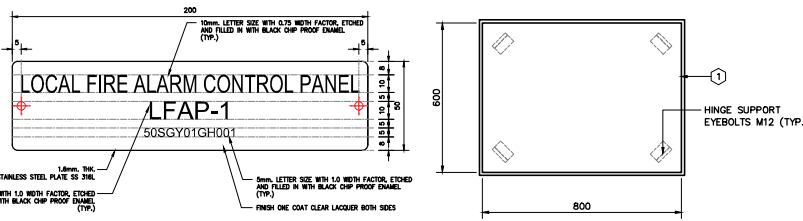




Revisions		Doc. No.	ES-(XTJB)5,6-32-00-0007		
Rev.	Description	Revised	Checked	Approved	Date
0	First issue	-	-	-	-
1	Revised as per design progress	T. Yoshioka AUG.9, 2018	T. Kawazu AUG.9, 2018	T. Kawazu	AUG.9, 2018
2	Revised as per design progress	T. Yoshioka NOV.1, 2018	T. Kawazu NOV.1, 2018	T. Kawazu	NOV.1, 2018
3	Issued for construction	T. Yoshioka DEC.11, 2018	M. Takahashi DEC.11, 2018	M. Takahashi	DEC.11, 2018
4	Issued for construction	T. Yoshioka JUL.4, 2019	T. Kawazu JUL.4, 2019	T. Kawazu	JUL.4, 2019
5	Issued for construction	T. Yoshioka AUG.18, 2020	T. Kawazu AUG.18, 2020	T. Kawazu	AUG.18,2020
6	Issued for As Built	K.Yamashita FEB.21, 2022	T.Yoshioka FEB.21, 2022	M.Takahashi	FEB.21, 2022

< CONTENTS >

1. OUTLINE DRAWING FOR LFAP-1 (50SGY01GH001) P. 3
2. OUTLINE DRAWING FOR NFS2-640E OF LFAP-1 (50SGY01GH001) P. 4
3. OUTLINE DRAWING FOR FIRE MODULE CABINET (50SGY01GH002) P. 5
4. OUTLINE DRAWING FOR FIRE MODULE CABINET (50SGY01GH003) P. 6
5. OUTLINE DRAWING FOR FIRE MODULE CABINET (50SGY01GH004) P. 7
6. OUTLINE DRAWING FOR FIRE MODULE CABINET (50SGY01GH005) P. 8
7. OUTLINE DRAWING FOR FIRE MODULE CABINET (50SGY01GH006) P. 9
8. OUTLINE DRAWING FOR FIRE MODULE CABINET (50SGY02GH001) P. 10
9. OUTLINE DRAWING FOR FIRE MODULE CABINET (50SGY02GH002) P. 11
10. OUTLINE DRAWING FOR FIRE MODULE CABINET (50SGY02GH003) P. 12

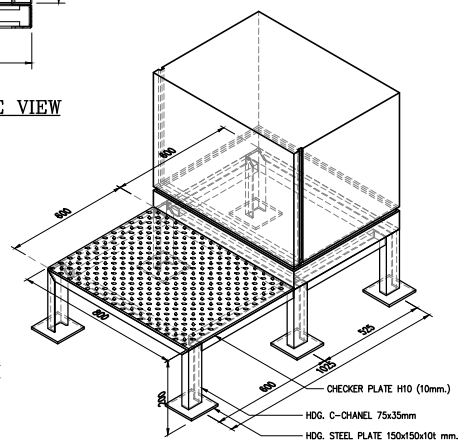
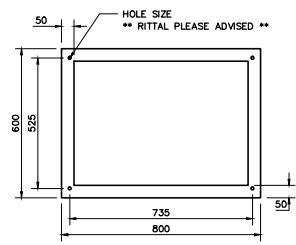
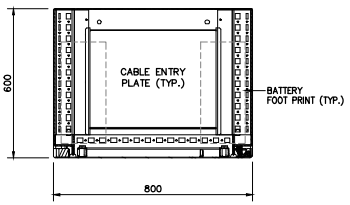


REMARK :

- ADDITIONAL SUPPORT FOR MOUNTING THE DEVICES SHALL BE PROVIDED BY FABRICATOR.
- THE PROVIDED ADDITIONAL SUPPORT SHALL BE DESIGNED WITH CONSIDERATION TO FACILITATE AND SUPPORTING THE MAINTENANCE AND SERVICE PURPOSE AFTER COMPLETED INSTALLATION. ANY CONNECTION OF COMMUNICATION CABLE TO THE DEVICES SHALL NOT BE REQUIRED TO REMOVE OR RE-TIGHTEN ANY BOLT OR SCREW WHERE THE HINGES SHALL BE RECOMMENDED.

CONTROL PANEL OUTLINE DRAWING FOR LFP-1 (50SGY01GH001) LOCATED @ BOILER UNIT 5 GL.+0.0

PANEL SPECIFICATION	
BRAND :	TAMCO
DIMENSION :	800x1900x600mm (WxHxD)
WEIGHT :	APPROX. 150 kg
COVER THICKNESS :	2mm.
BASE & STRUCTURE THICKNESS :	3mm.
PANEL MATERIAL :	ELECTRO GALVANIZED STEEL SHEET
CABINET COATING :	
CABINET :	POWDER-COATED UV-RESISTANT PURE POLYESTER
PROTECTION CLASS SURFACE COLOR	
IP 55	RAL 3020
APPROVED AMBIENT TEMPERATURE	
0°C to +50°C	CABLE ENTRY - BOTTOM SIDE
APPROVED RELATIVE HUMIDITY	
<93%	INTERNAL WIRING - 2.5 Sq.mm. 450/750V PVC INSULATED WIRE (EC 02) - INSULATION COLOR : RED(+), BLUE(-) - INSTRUMENTATION CIRCUIT (0.5Sq.mm/min.) - INSULATION COLOR : RED(+), BLUE(-)
KEY SYSTEM	
MANUFACTURE STANDARD	



REV.	DESCRIPTION	DATE	BY	CHECKED	APPROVED	SCALE

BILL OF MATERIALS		
ITEM	DESCRIPTIONS	QTY
1	OUTDOOR ENCLOSURES SIZE (WxHxD) 800x1900x600	1
2	NOTIFIER ENCLOSURE, NFS2-640E	1
3	WINDOW GLASS	1
4	RAILS FOR INTERIOR INSTALLATION	2
5	TS PUNCHED SECTION WITH MOUNTING FLANGE 17x73 mm	2
6	TS PUNCHED SECTION WITH MOUNTING 17x73 mm	9
7	MOUNTING PLATE	1
8	STEED, HEATER (45W) RAIL MOUNTED TYPE P/N : 140230-00	1
9	STEED, HYDROSTAT (30-90% RH) RAIL MOUNTED TYPE P/N : 01220-00	1
10	OUTLET FILTER	2
11	NOTIFIER, TEN INPUT MONITOR MODULE CARD (XP10-M)	4
12	NOTIFIER, CHS-6 CHASSIS	2
13	NOTIFIER, RELAY MODULE (FRM-1)	1
14	NOTIFIER, MINI MONITOR MODULE (FM-10)	1
15	BACK-UP BATTERY, 12 V, 120 AH	2
16	DUPLEX RECEPTACLE WITH GROUND SLOT 16A, 230VAC, 50Hz.	1
17	FLUORESCENT (T5), ELECTRONIC BALLAST, 230V, (P4+HPE) BATTEN TYPE LUMINAIRE (REQUIRE ILLUMINATION 300 LUX)	1
18	OMRON, SEALED MINATURE BASIC SWITCH RATING SA, 230VAC, 50Hz. (FOR ON/OFF FLUORESCENT LAMP)	1
19	PHOENIX, TERMINATION BLOCK WITH RAIL MOUNTED (TB-1) P/N : UT 6 FOR MAXIMUM CABLE SIZE 6 Sqmm	3
20	PHOENIX, TERMINATION BLOCK WITH RAIL MOUNTED (TB-2) P/N : UT 6 FOR MAXIMUM CABLE SIZE 6 Sqmm	6
21	PHOENIX, TERMINATION BLOCK WITH RAIL MOUNTED (TB-3) P/N : UT 4 FOR MAXIMUM CABLE SIZE 4 Sqmm	80
22	ABB, MINATURE CIRCUIT BREAKER (MBS) 2P 20A, 230VAC DIN RAIL MOUNTED TYPE	1
23	EQUIVALENT POTENTIAL GROUND BAR (COPPER) SIZE 100x25x6mm (LxHxW)	2
24	WIRE DUCT 40x60mm(WxH) FOR 230VAC CIRCUIT	-
25	WIRE DUCT 60x80mm(WxH) FOR 24VDC CIRCUIT	-
26	SIGNAL STROBE WARNING LIGHT & ALARM BUZZER (RED) 24 VDC	1
27	STAINLESS STEEL PANEL NAME PLATE (SEE DETAIL "A")	1
28	NOTIFIER, FIRE SIX RELAY MODULE (XP-6R)	3
29	OMRON, INTERPOSE RELAY COIL RATING 24VDC, CONTACT RATING 125VDC (P/N MY2N) WITH SOCKET AND DIN RAIL	2

REV.	DATE	DESCRIPTION	BY	CHECKED	APPROVED
A	10/01/2010	ISSUED FOR APPROVAL	B. Chandra	L. Satrio	K. Tanaka
B	12/13/2014	ISSUED FOR APPROVAL	B. Chandra	L. Satrio	K. Tanaka
C	04/25/2018	ISSUED FOR APPROVAL	B. Chandra	L. Satrio	K. Tanaka
E	04/11/2019	ISSUED FOR APPROVAL	B. Chandra	L. Satrio	K. Tanaka
D	02/12/2019	ISSUED FOR APPROVAL	B. Chandra	L. Satrio	K. Tanaka

OWNER
PT. Bhumi Jati Power

PROJECT TITLE
TANJUNG JATI B EXPANSION (JAWA-4) COAL FIRED STEAM POWER PLANT 2 x 1,000 MW

OWNER'S ENGINEER
POYRY

EPC CONTRACTORS
Sumitomo Corporation
PT. Wasa Mitra Engineering
AvantPower Japan Ltd.

PROJECT DRAWING NO.
TJB56-L2-OFF-J45-SC-M-DGA-0003

ORDER
Mitsubishi Hitachi Power Systems

TEAM CODE
Project Dwg. No. ES-XTJB5,6-32-00-0007

Checked
Approved

Date
08/28/2010

Scale
1:1

Plant Section
PLANT LEVEL 0 & 100 EQUIPMENT

Plant Section
MITSUBISHI HITACHI POWER SYSTEMS