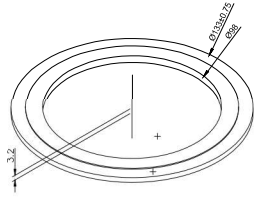
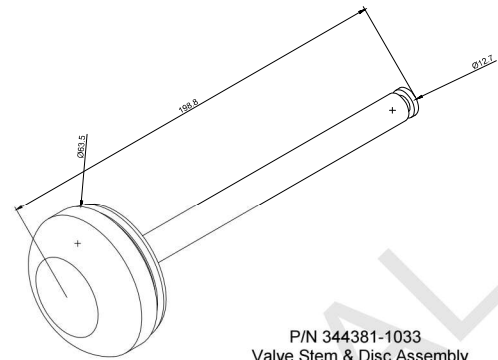


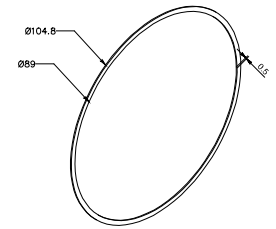
P/N 347691-010A
Poppet Valve - Valve Stem Packing



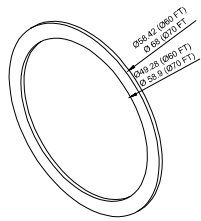
P/N 405895-010A
Companion Flange Gasket



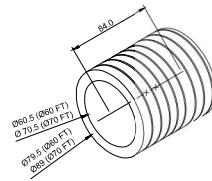
P/N 344381-1033
Valve Stem & Disc Assembly



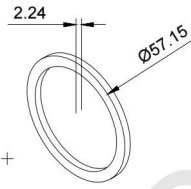
P/N 305656-0117
LANCE TUBE GASKET (IK500 Series)



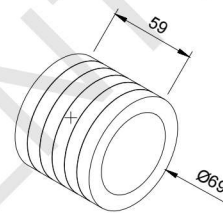
Ø60 Feed Tube Gasket
Drg. & P/N 304634-0117



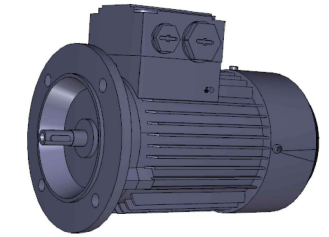
IK500 Series Ø60 Feed Tube Packing
P/N 346160-1134



P/N 310493-3118
Feed Tube Gasket
IR2H



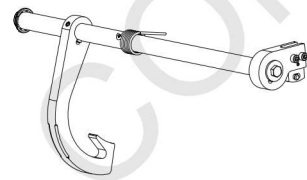
P/N 315030-9903
Ø60 Feed Tube Packing
IR2H



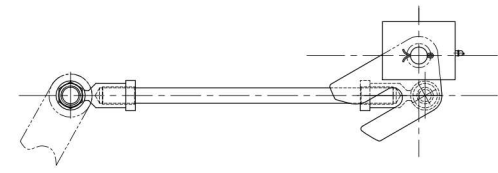
Motor



LIMIT SWITCH
Type: ZCK-J1H29C



P/N: 398582-000A
Valve Operation Mechanism
IR2H



Valve Operation Mechanism
IK500 Series

| ITEM | DESCRIPTION | DRAWING NUMBER | UNITS (Sets, Nos, Lots, etc) | QTY |
|------|-------------------------------------|----------------|------------------------------|-----|
| 1 | VALVE STEM PACKING | 347691-010A | PCS | 53 |
| 2 | COMPANION FLANGE GASKET | 405895-010A | PCS | 6 |
| 3 | VALVE STEM AND DISC ASSEMBLY | 344381-1033 | PCS | 2 |
| 4 | LANCE TUBE GASKET | 305656-0117 | PCS | 25 |
| 5 | FEED TUBE GASKET (ø 70) (IK) | 336755-1128 | PCS | 8 |
| 6 | FEED TUBE GASKET (ø 60) (IK) | 304634-0117 | PCS | 12 |
| 7 | FEED TUBE PACKING (ø 70) (IK) | 346161-1133 | PCS | 20 |
| 8 | FEED TUBE PACKING (ø 60) (IK) | 346160-1134 | PCS | 30 |
| 9 | FEED TUBE GASKET (IR) | 310493-3118 | PCS | 28 |
| 10 | FEED TUBE PACKING (IR) | 315030-9903 | PCS | 56 |
| 11 | LIMIT SWITCH (IR) | ZCK-J1H29C | PCS | 6 |
| 12 | LIMIT SWITCH (IK) | ZCK-J1H29C | PCS | 5 |
| 13 | MOTOR (IR-2H) | Ø21 0.18KW | PCS | 3 |
| 14 | MOTOR (IK-555) | Ø21 1.5KW | PCS | 2 |
| 15 | MOTOR (IK-55EL) | Ø21 1.5KW | PCS | 1 |
| 16 | Valve Operation Mechanism (IR-2H) | 398582-000A | PCS | 3 |
| 17 | Valve Operation Mechanism (IK-555) | 406155-0110 | PCS | 2 |
| 18 | Valve Operation Mechanism (IK-55EL) | 406155-0110 | PCS | 1 |

| DRAWING STANDARDS BASED ON | | DIMENSIONS ARE IN MILLIMETRES UNLESS OTHERWISE STATED | |
|----------------------------|---------------------|---|--------------|
| BS 308 | | | |
| DRAWN BY : SngIto | CHECKED BY : OtherC | DATE: 2018-09-07 | SCALE: N.T.S |
| APPROVED BY: Ikuji | | | SHEET 1 OF 1 |
| N12035-4-9 | | | Rev. B |

THIS DOCUMENT IS THE PROPERTY OF MITSUBISHI HITACHI POWER SYSTEMS LTD. (MHPSS) AND IS NOT TO BE REPRODUCED OR TRANSMITTED IN ANY FORM OR BY ANY MEANS, ELECTRONIC OR MECHANICAL, WITHOUT THE WRITTEN PERMISSION OF MHPSS. ANY UNAUTHORIZED REPRODUCTION OR TRANSMISSION IS STRICTLY PROHIBITED AND WILL BE SUBJECT TO LEGAL ACTION.

Customer: MHPSS PROJECT: Tanjung Lela Coal-fired Power Plant Upgrade LOCATION: INDONESIA

Reproduction of part or all the contents of the document is prohibited without the written permission from PT. Bumi Sejahtera.