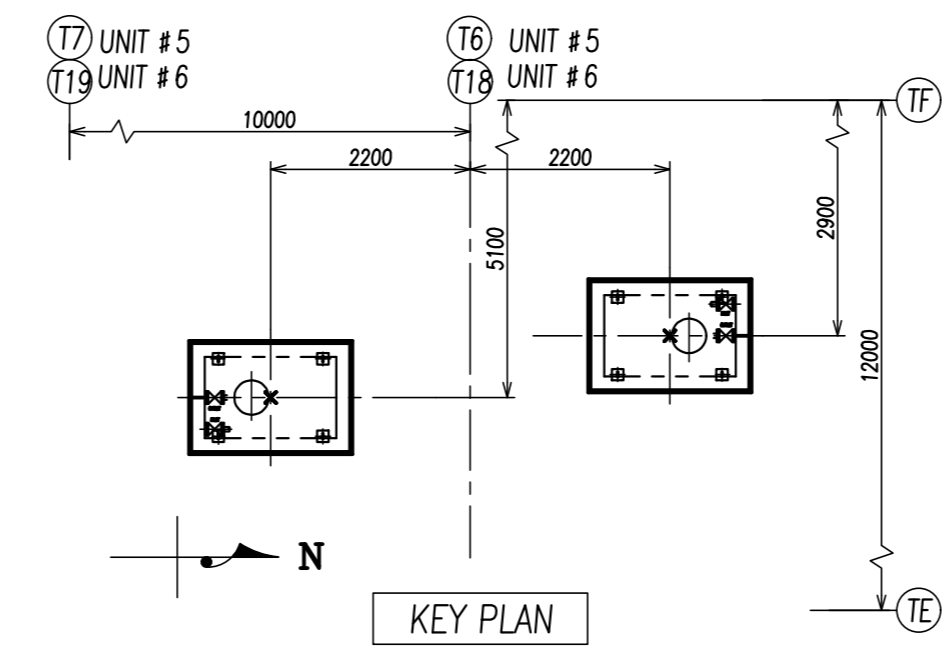
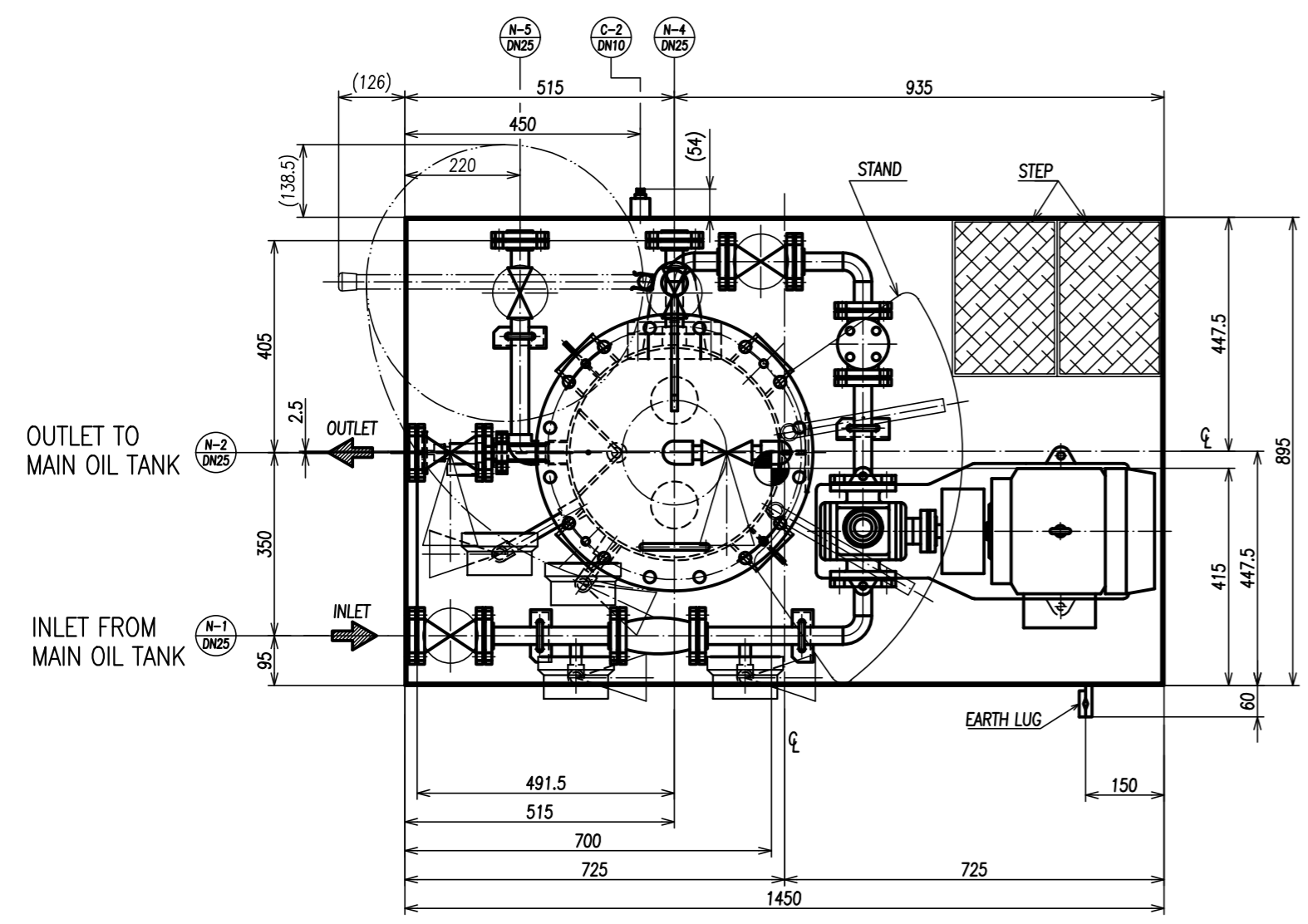


図面番号 DRAWING NO.
2KT119829
類似参考図 2KT118974
REV. MARK
F

C/H 図面番号 DRAWING NO. F1 2KT119829
変更種別名称 TITLE (ABBR) F1 OUT OIL COND
品質管理 担当 M.F. 普通許容差 下記ニヨル
REMARKS PREP. 4 FA 2 金属削り KDA A3521
溶接品・ガス切断 KDA A3524



- NOTES
- OPERATING WEIGHT : APPROXIMATE 745kg
 - REFERENCE DRAWING
 - Foundation Drawing for BFPT Oil Conditioner : TJB56-L1-OFF-C-LAV-C-DFN-3040 (2KT119531)
 - GENERAL ARRANGEMENT OF STEAM TURBINE BUILDING : TJB56-L1-OFF-C-00-M-DGA-2801 (OGMH00403)
 - PIPING & INSTRUMENT DIAGRAM FOR STEAM TURBINE AND BFPT LUBE OIL CONDITIONING SYSTEM : TJB56-L1-OFF-C-LAV-M-PID-2127 (2KW010259)
 - PUMP SPECIFICATION
 - NORMAL FLOW RATE : 2000 L/H
 - DISCHARGE PRESSURE : 3.4 bar(g)
 - RELIEF SET PRESSURE : 3.7 bar(g)
 - MARK SHOWS THE CENTER OF GRAVITY AT EMPTY CONDITION.
 - THIS DRAWING SHOWS KKS NUMBER FOR UNIT 5 ONLY
FOR UNIT 6 REPLACE TOTAL PLANT CODE (50) WITH "60"
 - THE ARRANGEMENT IS APPLICABLE FOR BOTH UNITS, UNITS 5 AND UNIT 6.
 - DESIGN DATA
 - DESIGN PRESSURE : 3.7 bar(g)
 - DESIGN TEMPERATURE : 79 °C

この図面を指定スル規格・標準類予、発行年・変更記号ノ指示ガナイモノハ最新版ヲ適用スルコト
PL分離 1 枚

SYMBOL	SERVICE NAME	RATING	SIZE	Q'TY	REMARKS
C-2	DRAIN(SKID)	ASME#3000	Rc 3/8	1	WITH PLUG
N-5	DRAIN(OIL)	ASME#150 RF	DN25 S/80	1	WITH COMPANION FLANGE
N-4	DRAIN (WATER)	ASME#150 RF	DN25 S/80	1	WITH COMPANION FLANGE
N-3	FILTER VENT	ASME#3000	R1	1	WITH CAP
N-2	OUTLET	ASME#150 RF	DN25 S/80	1	WITH COMPANION FLANGE
N-1	INLET	ASME#150 RF	DN25 S/80	1	WITH COMPANION FLANGE

EQUIPMENT NAME	KKS NUMBER	SPECIFICATION
BFPT A/B OIL CONDITIONER COALESCER	50LAV91/92 ATO01	WATER REMOVE 10000→500ppm
BFPT A/B OIL CONDITIONER FILTER PUMP	50LAV91/92 AP001	33.3l/min 3.4bar(g)
BFPT A/B OIL CONDITIONER FILTER PUMP MOTOR	50LAV91/92 AP001M01	1.5kW 1000rpm(SS)

*AFTER 5 CYCLE OPERATION

INSTRUMENT NAME	KKS NUMBER
STRAINER INLET PRESSURE GAUGE	50LAV91/92 CP501
FILTER PUMP INLET PRESSURE GAUGE	50LAV91/92 CP502
COALESCER FILTER INLET PRESSURE GAUGE	50LAV91/92 CP504
COALESCER FILTER OUTLET PRESSURE GAUGE	50LAV91/92 CP506
COALESCER FILTER LEVEL	50LAV91/92 CL505

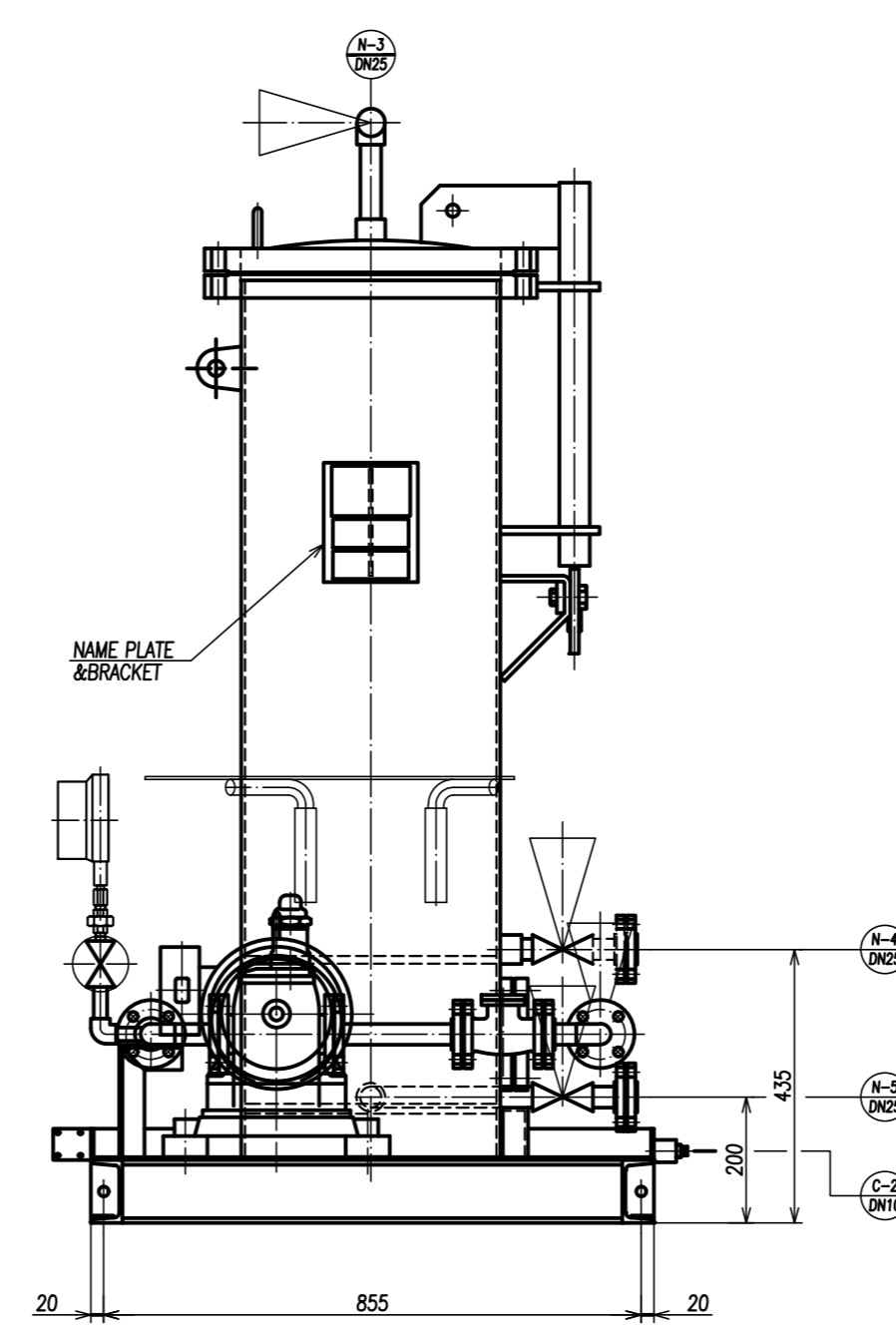
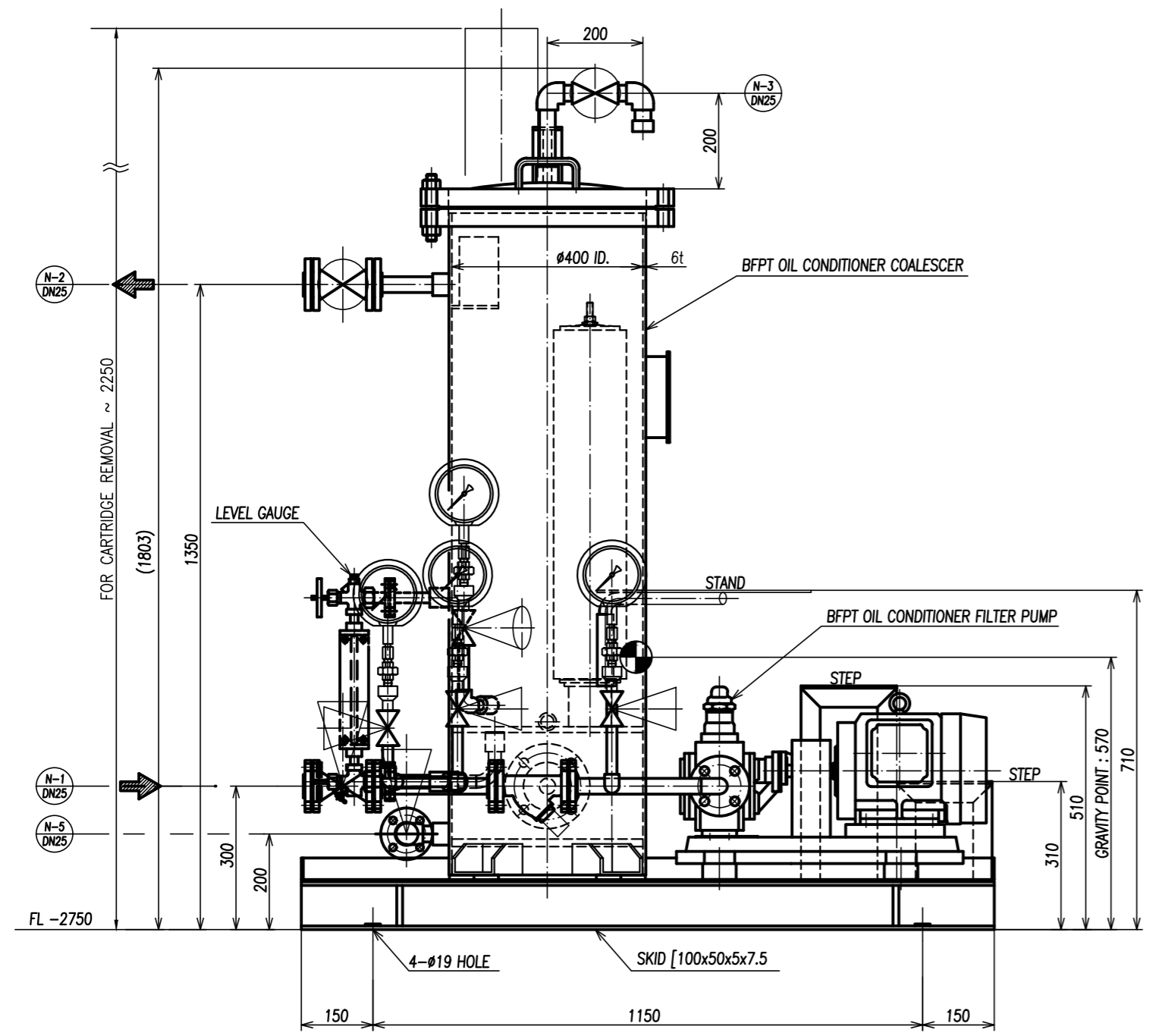
REV	DATE	DESCRIPTION	BY	CHKD	APPD
1	JAN.25.'22	FOR AS-BUILT	TJ	S.W	S.W
0	APR.03.'19	ISSUED FOR CONSTRUCTION	TJ	Y.N	Y.N

OWNER
PT.Bhumi Jati Power

PROJECT TITLE
TANJUNG JATI B EXPANSION (JAWA-4) COAL FIRED STEAM POWER PLANT 2 x 1,000 MW

OWNER'S ENGINEER
PÖYRY

EPC CONTRACTORS
Sumitomo Corporation
PT. Wasa Mitra Engineering
AvantPower Japan Ltd.



ISSUED FOR AS-BUILT

The information in this material is confidential and contains our intellectual property including know-how. It shall not be disclosed to any third party, copied, reproduced, used for unauthorized purposes nor modified without prior written consent of us. And please get them back this document after you have done with it.
Toshiba Energy Systems & Solutions Corporation
Keihin Product Operations

DRS-A015445	DRS-A014434	DRS-T014348	DRS-T014214	DRS-T013930	NDS-A515869
S.Watanabe JAN.-31-'22	Y.Nakamura APR.-03-'19	Y.Kono FEB.-18-'19	Y.Kono DEC.-05-'18	Y.Nakamura JUN.-22-'18	承認 APPROVED BY Y.Kono
S.Watanabe JAN.-31-'22	R.Iwasaki APR.-03-'19	Y.Kono FEB.-18-'19	S.Horii DEC.-05-'18	Y.Nakamura JUN.-22-'18	調査 REVIEWED BY Y.Nakamura
T.Tsunekawa JAN.-28-'22	T.Tsunekawa APR.-03-'19	D.Motoya FEB.-18-'19	D.Motoya DEC.-05-'18	T.Tsunekawa JUN.-22-'18	担当 PREPARED BY T.Tsunekawa
F-XIT05 For AS-BUILT	E-XIT05 Revised as per construction	D-XIT05 Added Instrument No..	C-XIT05 Revised as per design progress.	B-XIT05 Revised as per design progress.	記事 CONTENTS

承認 APPROVED BY	調査 REVIEWED BY	名称 TITLE
Y.Kono APR.-04-'18	T.Tsunekawa APR.-04-'18	Outline Drawing for BFPT Oil Conditioner
調査 REVIEWED BY Y.Nakamura APR.-04-'18	担当 PREPARED BY T.Tsunekawa APR.-04-'18	TANJUNG JATI 'B' Re-Expansion Project UNIT 5&6 2x1000MW

PROJECT DRAWING NO.	REV
TJB56-L1-OFF-C-LAV-M-DRD-2654	1

APPR	CHKD	Y.K	SCALE	TITLE
		Y.N		Outline Drawing for BFPT Oil Conditioner

EPC LOT SUB-CONTRACTOR	EPC LOT SUB-CONTRACTOR DRAWING NO.	REV
TOSHIBA	2KT119829	F

TOSHIBA 東芝エネルギーシステムズ株式会社
TOSHIBA ENERGY SYSTEMS & SOLUTIONS CORPORATION

図面番号 DRAWING NO.
2KT119829
REV. MARK
F