
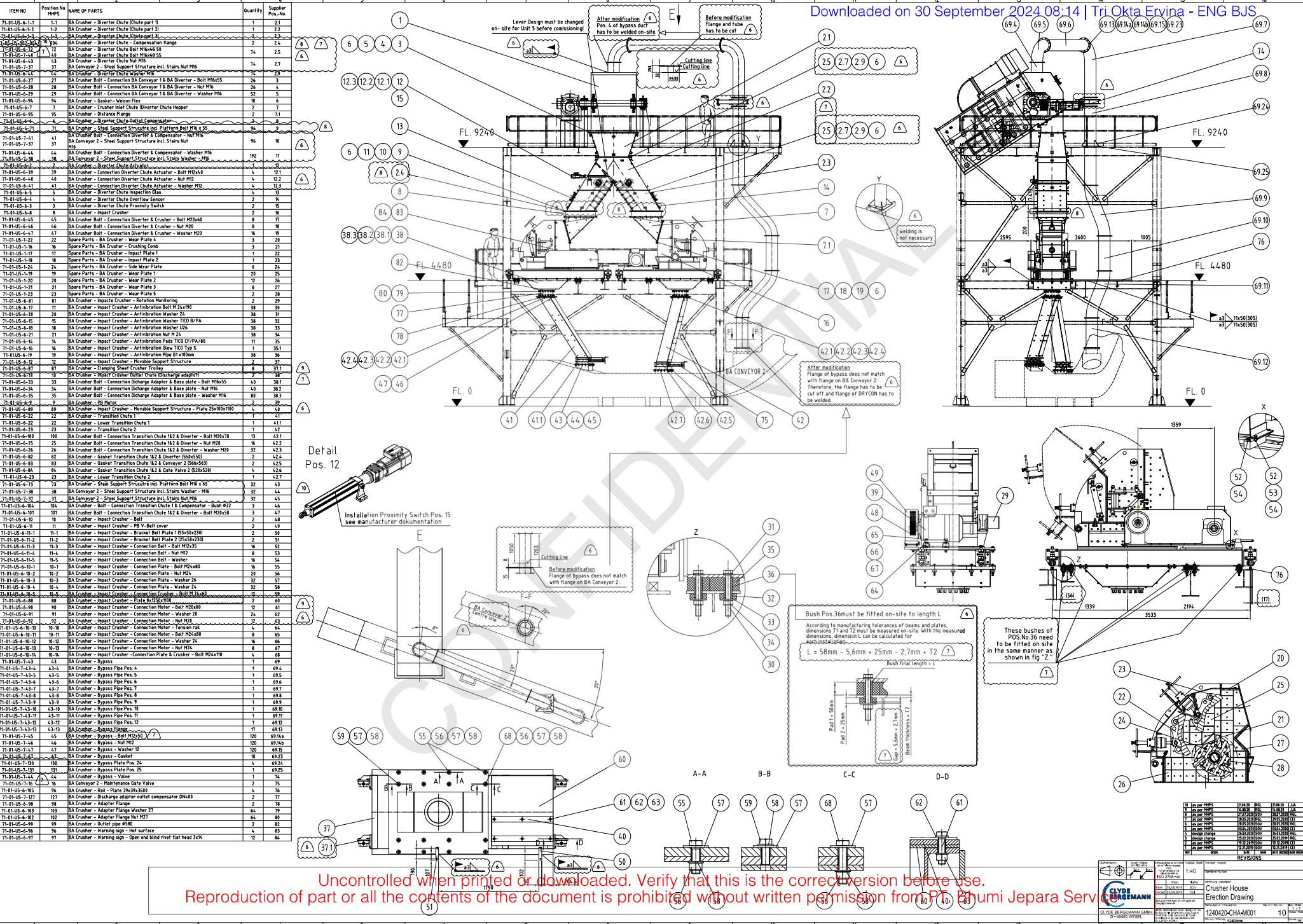


|   |   |  |  |                            |             |
|---|---|--|--|----------------------------|-------------|
|  |   | <b>Document:</b> Datasheet of BA CRUSHER     |  |                            |             |
|   |   | <b>Document nr.</b> 1240420-DRB20-M003       |  |                            |             |
| <b>SYSTEM :</b>   |   | Bottom Ash Handling System                   |  |                            |             |
| <b>Document Revision:</b>   | 7 | <b>Prepared</b>                              |  | <b>Approved</b>            | <b>Date</b> |
| <b>SI No:</b>   | 4 | -  |  | CEI                        | 10.12.20    |
| <b>A General</b>  |   |  |  |                            |             |
| Plant   | : | Tanjung Jati B-Unit 5&6; 1000 MW , Indonesia |  |                            |             |
| Unit  | : | Unit 5 & 6                                   |  |                            |             |
| Ambient Temperature   | : | Min-Max: 22 – 35°C ; Avg -29°C               |  |                            |             |
| Relative Humidity   | : | Min – Max: 50% – 92% ; Avg- 75%              |  |                            |             |
| Barometric Pressure   | : | 100,78 kPa                                   |  |                            |             |
| <b>B Matrial Data</b>   |   |  |  |                            |             |
| Material  | : | Bottom Ash                                   |  |                            |             |
| Density for volumetric calculation  | : | kg/m <sup>3</sup>                            |  | 720                        |             |
| Density for Power calculation   | : | kg/m <sup>3</sup>                            |  | 1120                       |             |
| Particle Size   | : | mm   |  | max 250                    |             |
| Design Temperature of Ash   | : | °C   |  | 200                        |             |
| Feed Capacity   | : | t/h  |  | 30                         |             |
| Feed Size   | : | mm   |  | 0-250                      |             |
| Product Size  | : | mm   |  | < 50 mm                    |             |
| <b>C Machinery Data</b>   |   |  |  |                            |             |
| Troughput rate  | : | t/h  |  | 30                         |             |
| Manufactur  | : | BHS SONTHOFEN, Germany                       |  |                            |             |
| Model No:   | : | PB0806                                       |  |                            |             |
| Installation  | : | Outdoor                                      |  |                            |             |
| Quantity & Tag No   | : | Unit 5: 2 Nos; 50HDA05AJ001 & 50HDA05AJ002   |  |                            |             |
|   | : | Unit 6: 2 Nos; 60HDA05AJ001 & 60HDA05AJ002   |  |                            |             |
| <b>D Manufacturing Data</b>   |   |  |  |                            |             |
| Type  | : | Impact Crusher                               |  |                            |             |
| Operating time  | : | Continuous                                   |  |                            |             |
| Operating Temperature   | : | °C   |  | 200°C                      |             |
| Noise emission  | : | ≤ 85 db(A) @ 1 m from surface of equipment.  |  |                            |             |
| Feed Particle Size (max)  | : | mm   |  | 250                        |             |
| Product Size  | : | mm   |  | ≤ 50 (100%)                |             |
| Design Temperature  | : | °C   |  | 300°C (for short duration) |             |
| <b>E Crusher Dimension &amp; Parts</b>  |   |  |  |                            |             |
| Rotor dimensions  |   |  |  |                            |             |
| Diameter  | : | mm   |  | 800                        |             |
| Width   | : | mm   |  | 620                        |             |
| Shaft Diameter  | : | mm   |  | 140                        |             |
| Hammer  | : | 3 Nos.                                       |  |                            |             |
| Feed Opening  | : | mm   |  | 640 x 650                  |             |
| Cam/rotor Rotating speed  | : | rpm  |  | max. 1874                  |             |
| Dimension   | : | mm   |  | ~ 2200x1600x1900           |             |
| Weight  | : | Kgs  |  | 4400                       |             |



Uncontrolled when printed or downloaded. Verify that this is the correct version before use.  
 Reproduction of part or all the contents of the document is prohibited without written permission from PT. Bhumi Jepara Servis

| NO | ITEM NO         | DESCRIPTION                                 | QTY | UNIT | REVISION |
|----|-----------------|---|-----|------|----------|
| 1  | 71-01-US-4-1.1  | BA Crusher - Diverter Chute (chute part II) | 1   | 2.1  |          |
| 2  | 71-01-US-4-1.2  | BA Crusher - Diverter Chute (chute part II) | 1   | 2.2  |          |
| 3  | 71-01-US-4-1.3  | BA Crusher - Diverter Chute (chute part II) | 2   | 2.3  |          |
| 4  | 71-01-US-4-1.4  | BA Crusher - Diverter Chute (chute part II) | 2   | 2.4  |          |
| 5  | 71-01-US-4-1.5  | BA Crusher - Diverter Chute (chute part II) | 74  | 2.5  |          |
| 6  | 71-01-US-4-1.6  | BA Crusher - Diverter Chute (chute part II) | 74  | 2.7  |          |
| 7  | 71-01-US-4-1.7  | BA Crusher - Diverter Chute (chute part II) | 16  | 2.8  |          |
| 8  | 71-01-US-4-1.8  | BA Crusher - Diverter Chute (chute part II) | 26  | 3    |          |
| 9  | 71-01-US-4-1.9  | BA Crusher - Diverter Chute (chute part II) | 26  | 4    |          |
| 10 | 71-01-US-4-1.10 | BA Crusher - Diverter Chute (chute part II) | 5   | 5    |          |
| 11 | 71-01-US-4-1.11 | BA Crusher - Diverter Chute (chute part II) | 2   | 7    |          |
| 12 | 71-01-US-4-1.12 | BA Crusher - Diverter Chute (chute part II) | 2   | 7.1  |          |
| 13 | 71-01-US-4-1.13 | BA Crusher - Diverter Chute (chute part II) | 2   | 8    |          |
| 14 | 71-01-US-4-1.14 | BA Crusher - Diverter Chute (chute part II) | 2   | 8.1  |          |
| 15 | 71-01-US-4-1.15 | BA Crusher - Diverter Chute (chute part II) | 2   | 8.2  |          |
| 16 | 71-01-US-4-1.16 | BA Crusher - Diverter Chute (chute part II) | 2   | 8.3  |          |
| 17 | 71-01-US-4-1.17 | BA Crusher - Diverter Chute (chute part II) | 2   | 8.4  |          |
| 18 | 71-01-US-4-1.18 | BA Crusher - Diverter Chute (chute part II) | 2   | 8.5  |          |
| 19 | 71-01-US-4-1.19 | BA Crusher - Diverter Chute (chute part II) | 2   | 8.6  |          |
| 20 | 71-01-US-4-1.20 | BA Crusher - Diverter Chute (chute part II) | 2   | 8.7  |          |
| 21 | 71-01-US-4-1.21 | BA Crusher - Diverter Chute (chute part II) | 2   | 8.8  |          |
| 22 | 71-01-US-4-1.22 | BA Crusher - Diverter Chute (chute part II) | 2   | 8.9  |          |
| 23 | 71-01-US-4-1.23 | BA Crusher - Diverter Chute (chute part II) | 2   | 8.10 |          |
| 24 | 71-01-US-4-1.24 | BA Crusher - Diverter Chute (chute part II) | 2   | 8.11 |          |
| 25 | 71-01-US-4-1.25 | BA Crusher - Diverter Chute (chute part II) | 2   | 8.12 |          |
| 26 | 71-01-US-4-1.26 | BA Crusher - Diverter Chute (chute part II) | 2   | 8.13 |          |
| 27 | 71-01-US-4-1.27 | BA Crusher - Diverter Chute (chute part II) | 2   | 8.14 |          |
| 28 | 71-01-US-4-1.28 | BA Crusher - Diverter Chute (chute part II) | 2   | 8.15 |          |
| 29 | 71-01-US-4-1.29 | BA Crusher - Diverter Chute (chute part II) | 2   | 8.16 |          |
| 30 | 71-01-US-4-1.30 | BA Crusher - Diverter Chute (chute part II) | 2   | 8.17 |          |
| 31 | 71-01-US-4-1.31 | BA Crusher - Diverter Chute (chute part II) | 2   | 8.18 |          |
| 32 | 71-01-US-4-1.32 | BA Crusher - Diverter Chute (chute part II) | 2   | 8.19 |          |
| 33 | 71-01-US-4-1.33 | BA Crusher - Diverter Chute (chute part II) | 2   | 8.20 |          |
| 34 | 71-01-US-4-1.34 | BA Crusher - Diverter Chute (chute part II) | 2   | 8.21 |          |
| 35 | 71-01-US-4-1.35 | BA Crusher - Diverter Chute (chute part II) | 2   | 8.22 |          |
| 36 | 71-01-US-4-1.36 | BA Crusher - Diverter Chute (chute part II) | 2   | 8.23 |          |
| 37 | 71-01-US-4-1.37 | BA Crusher - Diverter Chute (chute part II) | 2   | 8.24 |          |
| 38 | 71-01-US-4-1.38 | BA Crusher - Diverter Chute (chute part II) | 2   | 8.25 |          |
| 39 | 71-01-US-4-1.39 | BA Crusher - Diverter Chute (chute part II) | 2   | 8.26 |          |
| 40 | 71-01-US-4-1.40 | BA Crusher - Diverter Chute (chute part II) | 2   | 8.27 |          |
| 41 | 71-01-US-4-1.41 | BA Crusher - Diverter Chute (chute part II) | 2   | 8.28 |          |
| 42 | 71-01-US-4-1.42 | BA Crusher - Diverter Chute (chute part II) | 2   | 8.29 |          |
| 43 | 71-01-US-4-1.43 | BA Crusher - Diverter Chute (chute part II) | 2   | 8.30 |          |
| 44 | 71-01-US-4-1.44 | BA Crusher - Diverter Chute (chute part II) | 2   | 8.31 |          |
| 45 | 71-01-US-4-1.45 | BA Crusher - Diverter Chute (chute part II) | 2   | 8.32 |          |
| 46 | 71-01-US-4-1.46 | BA Crusher - Diverter Chute (chute part II) | 2   | 8.33 |          |
| 47 | 71-01-US-4-1.47 | BA Crusher - Diverter Chute (chute part II) | 2   | 8.34 |          |
| 48 | 71-01-US-4-1.48 | BA Crusher - Diverter Chute (chute part II) | 2   | 8.35 |          |
| 49 | 71-01-US-4-1.49 | BA Crusher - Diverter Chute (chute part II) | 2   | 8.36 |          |
| 50 | 71-01-US-4-1.50 | BA Crusher - Diverter Chute (chute part II) | 2   | 8.37 |          |
| 51 | 71-01-US-4-1.51 | BA Crusher - Diverter Chute (chute part II) | 2   | 8.38 |          |
| 52 | 71-01-US-4-1.52 | BA Crusher - Diverter Chute (chute part II) | 2   | 8.39 |          |
| 53 | 71-01-US-4-1.53 | BA Crusher - Diverter Chute (chute part II) | 2   | 8.40 |          |
| 54 | 71-01-US-4-1.54 | BA Crusher - Diverter Chute (chute part II) | 2   | 8.41 |          |
| 55 | 71-01-US-4-1.55 | BA Crusher - Diverter Chute (chute part II) | 2   | 8.42 |          |
| 56 | 71-01-US-4-1.56 | BA Crusher - Diverter Chute (chute part II) | 2   | 8.43 |          |
| 57 | 71-01-US-4-1.57 | BA Crusher - Diverter Chute (chute part II) | 2   | 8.44 |          |
| 58 | 71-01-US-4-1.58 | BA Crusher - Diverter Chute (chute part II) | 2   | 8.45 |          |
| 59 | 71-01-US-4-1.59 | BA Crusher - Diverter Chute (chute part II) | 2   | 8.46 |          |
| 60 | 71-01-US-4-1.60 | BA Crusher - Diverter Chute (chute part II) | 2   | 8.47 |          |
| 61 | 71-01-US-4-1.61 | BA Crusher - Diverter Chute (chute part II) | 2   | 8.48 |          |
| 62 | 71-01-US-4-1.62 | BA Crusher - Diverter Chute (chute part II) | 2   | 8.49 |          |
| 63 | 71-01-US-4-1.63 | BA Crusher - Diverter Chute (chute part II) | 2   | 8.50 |          |
| 64 | 71-01-US-4-1.64 | BA Crusher - Diverter Chute (chute part II) | 2   | 8.51 |          |
| 65 | 71-01-US-4-1.65 | BA Crusher - Diverter Chute (chute part II) | 2   | 8.52 |          |
| 66 | 71-01-US-4-1.66 | BA Crusher - Diverter Chute (chute part II) | 2   | 8.53 |          |
| 67 | 71-01-US-4-1.67 | BA Crusher - Diverter Chute (chute part II) | 2   | 8.54 |          |
| 68 | 71-01-US-4-1.68 | BA Crusher - Diverter Chute (chute part II) | 2   | 8.55 |          |
| 69 | 71-01-US-4-1.69 | BA Crusher - Diverter Chute (chute part II) | 2   | 8.56 |          |
| 70 | 71-01-US-4-1.70 | BA Crusher - Diverter Chute (chute part II) | 2   | 8.57 |          |
| 71 | 71-01-US-4-1.71 | BA Crusher - Diverter Chute (chute part II) | 2   | 8.58 |          |
| 72 | 71-01-US-4-1.72 | BA Crusher - Diverter Chute (chute part II) | 2   | 8.59 |          |
| 73 | 71-01-US-4-1.73 | BA Crusher - Diverter Chute (chute part II) | 2   | 8.60 |          |
| 74 | 71-01-US-4-1.74 | BA Crusher - Diverter Chute (chute part II) | 2   | 8.61 |          |
| 75 | 71-01-US-4-1.75 | BA Crusher - Diverter Chute (chute part II) | 2   | 8.62 |          |
| 76 | 71-01-US-4-1.76 | BA Crusher - Diverter Chute (chute part II) | 2   | 8.63 |          |
| 77 | 71-01-US-4-1.77 | BA Crusher - Diverter Chute (chute part II) | 2   | 8.64 |          |
| 78 | 71-01-US-4-1.78 | BA Crusher - Diverter Chute (chute part II) | 2   | 8.65 |          |
| 79 | 71-01-US-4-1.79 | BA Crusher - Diverter Chute (chute part II) | 2   | 8.66 |          |
| 80 | 71-01-US-4-1.80 | BA Crusher - Diverter Chute (chute part II) | 2   | 8.67 |          |
| 81 | 71-01-US-4-1.81 | BA Crusher - Diverter Chute (chute part II) | 2   | 8.68 |          |
| 82 | 71-01-US-4-1.82 | BA Crusher - Diverter Chute (chute part II) | 2   | 8.69 |          |
| 83 | 71-01-US-4-1.83 | BA Crusher - Diverter Chute (chute part II) | 2   | 8.70 |          |
| 84 | 71-01-US-4-1.84 | BA Crusher - Diverter Chute (chute part II) | 2   | 8.71 |          |
| 85 | 71-01-US-4-1.85 | BA Crusher - Diverter Chute (chute part II) | 2   | 8.72 |          |
| 86 | 71-01-US-4-1.86 | BA Crusher - Diverter Chute (chute part II) | 2   | 8.73 |          |
| 87 | 71-01-US-4-1.87 | BA Crusher - Diverter Chute (chute part II) | 2   | 8.74 |          |
| 88 | 71-01-US-4-1.88 | BA Crusher - Diverter Chute (chute part II) | 2   | 8.75 |          |
| 89 | 71-01-US-4-1.89 | BA Crusher - Diverter Chute (chute part II) | 2   | 8.76 |          |
| 90 | 71-01-US-4-1.90 | BA Crusher - Diverter Chute (chute part II) | 2   | 8.77 |          |
| 91 | 71-01-US-4-1.91 | BA Crusher - Diverter Chute (chute part II) | 2   | 8.78 |          |
| 92 | 71-01-US-4-1.92 | BA Crusher - Diverter Chute (chute part II) | 2   | 8.79 |          |
| 93 | 71-01-US-4-1.93 | BA Crusher - Diverter Chute (chute part II) | 2   | 8.80 |          |
| 94 | 71-01-US-4-1.94 | BA Crusher - Diverter Chute (chute part II) | 2   | 8.81 |          |
| 95 | 71-01-US-4-1.95 | BA Crusher - Diverter Chute (chute part II) | 2   | 8.82 |          |
| 96 | 71-01-US-4-1.96 | BA Crusher - Diverter Chute (chute part II) | 2   | 8.83 |          |
| 97 | 71-01-US-4-1.97 | BA Crusher - Diverter Chute (chute part II) | 2   | 8.84 |          |