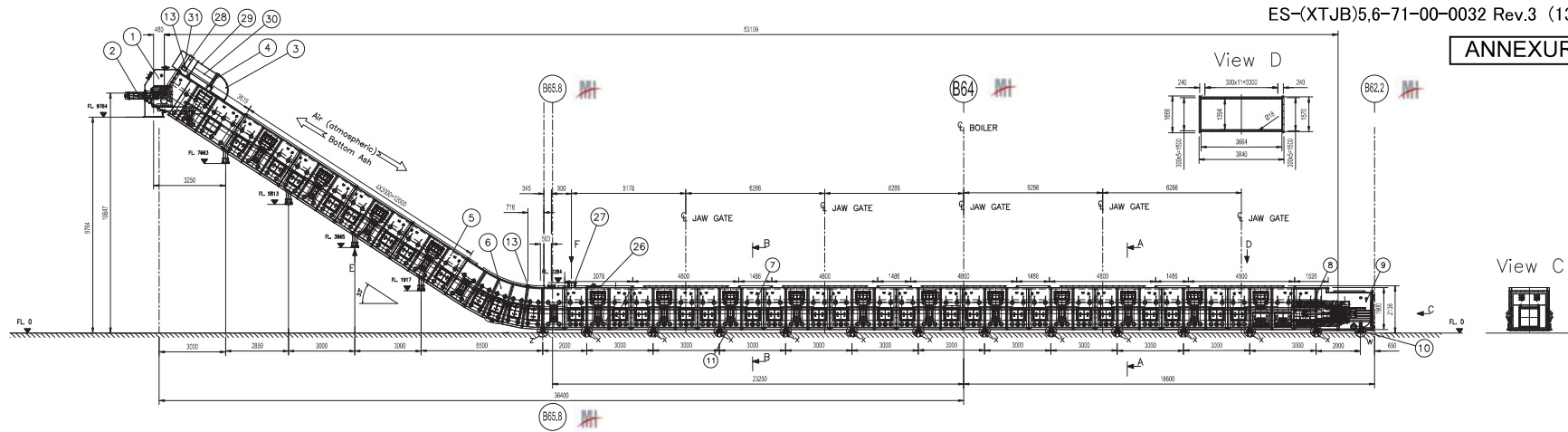


ANNEXURE E



View F



View E



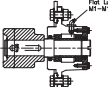
Detail Z (Fixpoint - Support)



Detail X (Sliding - Support)

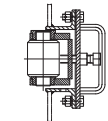


Detail M



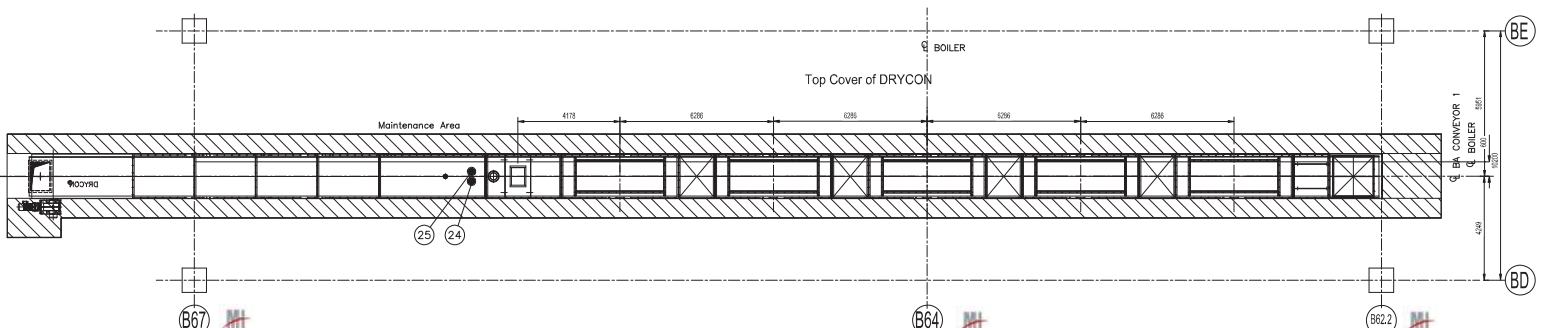
Support Roller M 1:20

Detail N



Guide Roller Assembly M 1:5

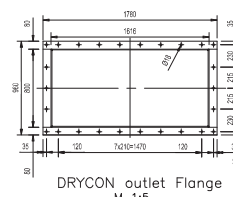
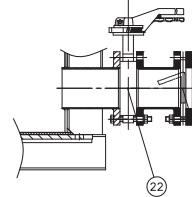
Section A-A M 1:10



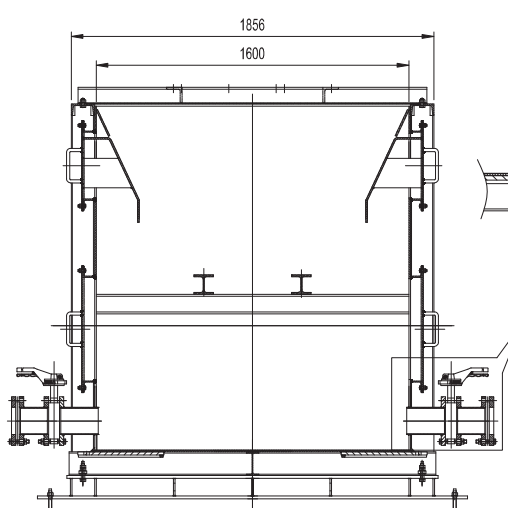
View C



Detail O



DRYCON outlet Flange M 1:5



Section B-B M 1:10

**REFERENCE DRAWINGS & DOCUMENTS**

**TECHNICAL SPECIFICATION - 1240420-DRB16-M003 / ES-(XTJB)5,6-71-00-0016 / TJB56-L2-OFF-U6-HDA-M-SPC-001**

**P&ID - 1240420-DRB16-M004 / ES-(XTJB)5,6-71-00-0010 / TJB56-L2-OFF-U6-HDA-M-PID-001**

**COATING / PAINTING SYSTEM & PROCEDURE - 1240420-DRB16-G013**

Further information are stated in 1240420-DRB-M003 Equipment Bill of Material List.

31	Main Air Inlet Duct	1
33	Main Air Flow Sensor	1
29	Main Air Transition Duct	1
28	Main Air Non Return Damper	1
27	Bypass Air Duct Flange	1
26	Top Access Door	1
25	Peephole for Light	1
24	Peephole for CCTV	1
23	DRB Horizontal Air Check Valve	68
22	DRB Horizontal Air Butterfly Valve	68
21	DRB Chain Master Link	30
20	DRB Chain B,285m	28
19	DRB Flight Attachment-CB2	305
18	DRB Flight Attachment-CB1	305
17	DRB16 Band Element High(230mm)	61
16	DRB16 Band Element Low(85mm)	244
15	DRB Guide Roller	74
14	DRB Support Roller	444
13	IR Temperature Sensor	2
12	Incline Support	1
11	Fix Point Support	1
10	Shift Point Support	4
9	DRB16 Tensioning Station	1
8	DRB16 Horizontal Section Type 1	1
7	DRB16 Horizontal Section Type 2	10
6	DRB16 Radius Section	1
5	DRB16 Incline Section	4
4	Main Air Inlet Damper	1
3	Main Air Inlet Duct	1
2	Gear Drive Motor	1
1	DRB16 Drive Station	1

PART LIST

Total weight = 75.5ton

NO.	REVISIONS	DATE	BY	CHKD.	APPD.
1	Initial Issue				
2	Bottom Ash Handling - BA Conveyor 1				
3	Tanjung Jabu B 566 - 50(BH)DAMAF001				
4	1240420-DRB16-M008 G				