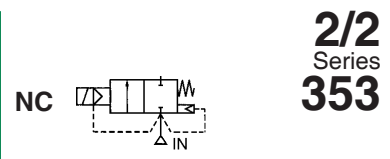




PULSE VALVES

dual stage, integral pilot
threaded body 1 1/2" to 3" or
compression fitting Ø 1 1/2"



2/2
Series
353

FEATURES

- The diaphragm pulse valves are especially designed for dust collector service applications, combining high flow, long life and extremely fast opening and closing to produce reliable and economical operation
- Integral compression fittings for fast, easy, secure installation
- The high quality diaphragms are reinforced and wear resistant to guarantee a long operating life, even under harsh conditions
- Various optional waterproof and explosionproof solenoids for use in potentially explosive atmospheres
- The valves satisfy all relevant EC directives

GENERAL

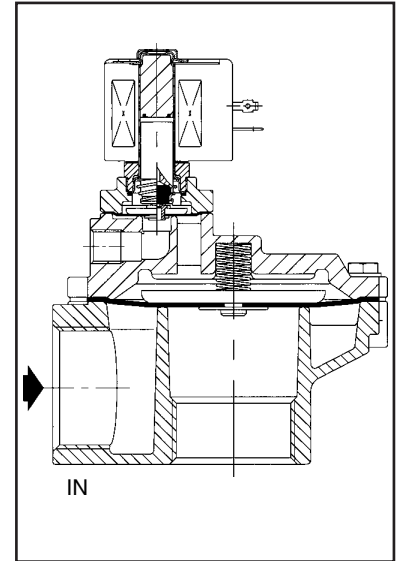
Differential pressure (PS) 0.35 - 8.5 bar [1 bar = 100kPa]
Ambient temperature range -20 ~ +85°C

Fluids (*)	Temperature Range (TS)	Diaphragm (*)
air	-20°C ~ +85°C	Chloroprene

MATERIALS IN CONTACT WITH FLUID

(*) Ensure that the compatibility of the fluids in contact with the materials is verified

Body	Aluminium
Core tube	Stainless steel
Core and plugnut	Stainless steel
Core spring	Stainless steel
Sealings & disc	NBR
Diaphragm	Chloroprene
Shading coil	Copper
Coil insulation class	F
Connector	Spade plug (cable Ø 6 - 10 mm)
Connector specification	ISO4400
Electrical safety	IEC335



ELECTRICAL CHARACTERISTICS

Standard voltages DC (-): 24V
(Other voltages and 60 Hz on request) AC (~): 24V/50; 110V/50, 120V/60; 220V/50, 240V/60

Coil Type	Nominal Power Ratings				Operator Temperature Range (TS) °C	Protection
	Inrush ~ (VA)	Holding ~ (VA) (W)		Hot/Cold = (W)		
		(VA)	(VA)			
238613-059	50	25	10.1	-	-20 ~ +85°C	IP65
238713-106	-	-	-	22.6		
238713-006	-	-	-	11.6		

SPECIFICATIONS

Pipe Size	Orifice Size (mm)	Flow Coefficient Kv (m³/h) (l/min)		Operating Pressure Differential (bar)				Coil Type ~ =		Catalog Number Aluminium Stainless Steel		Option			
				Min.	Max. (PS)		FPM					EPDM	CR	PTFE	
					~	=									Air (*)
G - Threaded pipe connection															
1 1/2"	52	44	768	0.35	8.5	8.5	MXX-FT	MXX-FT	SCG353G047*	SCG353G134	V				
2"	66	77	1290	0.35	8.5	8.5	MXX-FT	MXX-FB	SCG353G050*	-	V				
2 1/2"	66	92	1540	0.35	8.5	8.5	MXX-FT	MXX-FB	SCG353G051*(1)	-	V				
3"	75	170	2833	1.0	6	6	MXX-FT	MXX-FB	SCG353G060*(2)	-	V				
Ø - Compression fitting pipe connection															
1 1/2"	52	43	717	0.35	8.5	8.5	MXX-FT	MXX-FT	SCG353G065*	-	V				

(1) Contains spring above the main diaphragm

(2) Threaded pipe connection is external (male thread)

* Express in 10 business days, please contact with ASCO for more details

OPTIONS

- Waterproof enclosure with embedded screw terminal coil according to protection class IP67, CEE 10
- Explosionproof solenoids for hazardous locations according to ATEX and national standards
- Hose connection executions (3" only)
- Compliance with "UL" standards
- Plug with visual indication and/or peak voltage suppression
- Electronic timer
- Valves can also be supplied with FPM (fluoroelastomer) diaphragms and seals. Use the appropriate optional suffix letter for identification



INSTALLATION

- The valves can be mounted in any position without affecting operation
- Threaded pipe connection is G (ISO 228/1) or compression fitting
- For compression fitting types tightness is achieved by the compressed gasket on the blow tube
- The use of the rubber gaskets as sealing members will allow a slight misalignment in piping when using compression fittings
- Other pipe threads are available on request
- Installation/maintenance instructions are included with each valve
- Spare parts kits and replacement coils are available

DIMENSIONS (mm), WEIGHT (kg)

Fig. 1: Threaded pipe connection

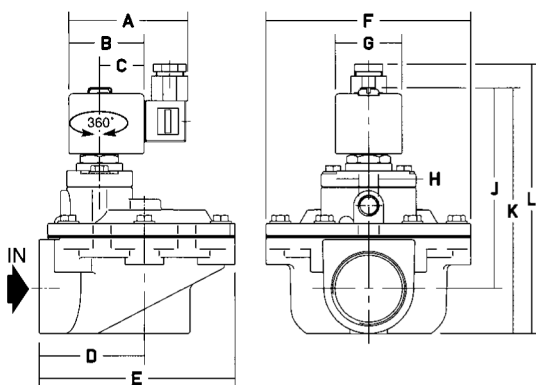


Fig. 2 Compression type fitting

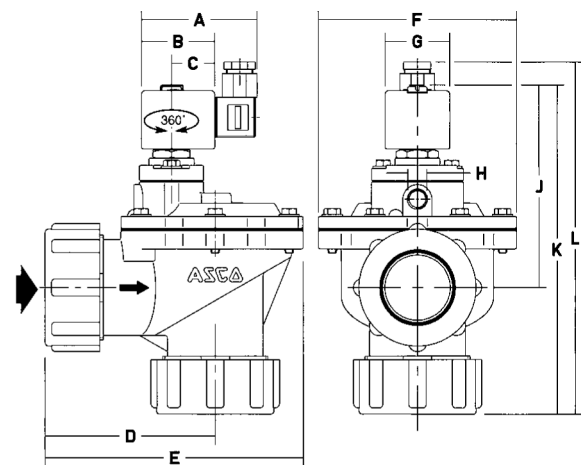
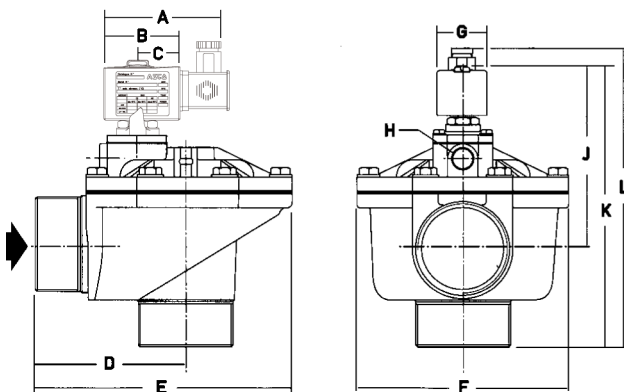


Fig. 3: External threaded type



Catalog Number	A	B	C	D	E	F	G	H	J	K	L	Weight ⁽¹⁾	(C)
SCG353G047	94	57	31	71	130	136	49.6	G 3/8	131	161	174	1.40	Fig.1
SCG353G050	94	57	31	95	168	165	49.6	G 3/4	165	210	222	2.90	Fig.1
SCG353G051	94	57	31	95	168	165	49.6	G 3/4	165	210	222	2.60	Fig.1
SCG353G060	94	57	31	143	240	192	49.6	G 1/2	165	258	271	4.10	Fig.3
SCG353G065	94	57	31	117	177	136	49.6	G 3/8	131	225	238	1.75	Fig.2

⁽¹⁾ Incl. coil and connector

^(C) Construction type