

Strategic Spare Parts List (Recommended Spare Parts List)

EQ/SYS.		USE		
Auxiliary Cooling Water Pump		-		
No.	Description	OUTLINE	QUANTITY	REMARKS (Purpose)
TJB5-SS-MECH -ACWP-001	Pump Impeller	Part No. 230.11 (See. attached drawing)	Refer to TJB56-L1-OFF-C -00-G-LST-0021	-
TJB5-SS-MECH -ACWP-002	Pump Sideplate	Part No. 135.11 (See. attached drawing)	Refer to TJB56-L1-OFF-C -00-G-LST-0021	-
TJB5-SS-MECH -ACWP-003	Pump O-Ring	Part No. 412.11 (See. attached drawing)	Refer to TJB56-L1-OFF-C -00-G-LST-0021	-
TJB5-SS-MECH -ACWP-004	Pump O-Ring	Part No. 412.12 (See. attached drawing)	Refer to TJB56-L1-OFF-C -00-G-LST-0021	-
TJB5-SS-MECH -ACWP-005	Pump O-Ring	Part No. 412.14 (See. attached drawing)	Refer to TJB56-L1-OFF-C -00-G-LST-0021	-
TJB5-SS-MECH -ACWP-006	Pump O-Ring	Part No. 412.21 (See. attached drawing)	Refer to TJB56-L1-OFF-C -00-G-LST-0021	-

Strategic Spare Parts List (Recommended Spare Parts List)

EQ/SYS.		USE		
Auxiliary Cooling Water Pump		-		
No.	Description	OUTLINE	QUANTITY	REMARKS (Purpose)
TJB5-SS-MECH -ACWP-007	Bearing O-Ring	Part No. 412.31 (See. attached drawing)	Refer to TJB56-L1-OFF-C -00-G-LST-0021	-
TJB5-SS-MECH -ACWP-008	Bearing O-Ring	Part No. 412.32 (See. attached drawing)	Refer to TJB56-L1-OFF-C -00-G-LST-0021	-
TJB5-SS-MECH -ACWP-009	Gasket	Part No. 400.21 (See. attached drawing)	Refer to TJB56-L1-OFF-C -00-G-LST-0021	-
TJB5-SS-MECH -ACWP-010	Gasket	Part No. 400.23 (See. attached drawing)	Refer to TJB56-L1-OFF-C -00-G-LST-0021	-
TJB5-SS-MECH -ACWP-011	Mechanical Seal	Part No. 433.21 (See. attached drawing)	Refer to TJB56-L1-OFF-C -00-G-LST-0021	-
TJB5-SS-MECH -ACWP-012	Shaft	Part No. 210.31 (See. attached drawing)	Refer to TJB56-L1-OFF-C -00-G-LST-0021	-

Strategic Spare Parts List (Recommended Spare Parts List)

EQ/SYS.		USE		
Auxiliary Cooling Water Pump		-		
No.	Description	OUTLINE	QUANTITY	REMARKS (Purpose)
TJB5-SS-MECH -ACWP-013	Antifriction Bearing	Part No. 320.31 (See. attached drawing)	Refer to TJB56-L1-OFF-C -00-G-LST-0021	-
TJB5-SS-MECH -ACWP-014	Antifriction Bearing	Part No. 320.32 (See. attached drawing)	Refer to TJB56-L1-OFF-C -00-G-LST-0021	-
TJB5-SS-MECH -ACWP-015	Bearing Deflector	Part No. 507.31 (See. attached drawing)	Refer to TJB56-L1-OFF-C -00-G-LST-0021	-
TJB5-SS-MECH -ACWP-016	Bearing Nut	Part No. 923.31 (See. attached drawing)	Refer to TJB56-L1-OFF-C -00-G-LST-0021	-
TJB5-SS-MECH -ACWP-017	Bearing Lock Washer	Part No. 931.31 (See. attached drawing)	Refer to TJB56-L1-OFF-C -00-G-LST-0021	-
TJB5-SS-MECH -ACWP-018	Shaft Key	Part No. 940.31 (See. attached drawing)	Refer to TJB56-L1-OFF-C -00-G-LST-0021	-

CONTRACT DATA

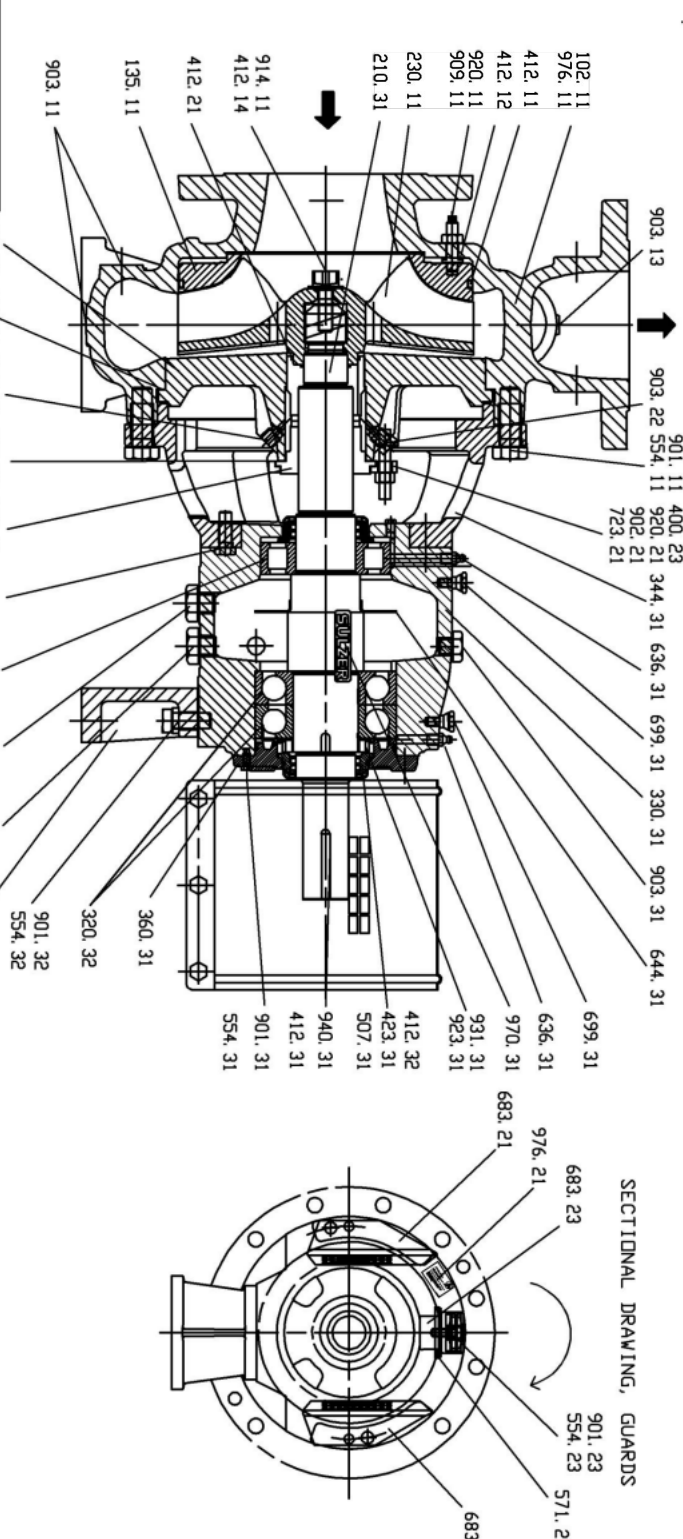
PURCHASER: Tollatec Energy Systems & Solutions Corp.
 USER: PT Cirebon Energi Prensana
 JOB/PROJECT: 1X1000MW Coal Fired Power Plant Project
 Cirebon Expansion Project (CERES02)
 CUST P.O. NO.: M1920015838
 INSTALLED AT: Kendal Kidan Cirebon/Unit 1/Div. Indonesia
 PUMP OEM: Sulzer Pumps Station Ltd
 SULZER ORDER NO.: 1093247140010

IDENTIFICATION NUMBERS
 CUSTOMER TAG NOS
 SULZER SERIAL NO. PUMP DRIVER
 808843 P2PCC11AP010 P2PCC11AP01AM01
 808844 P2PCC12AP010 P2PCC12AP01AM01

DRAWING CONTENT
 SHEET DESCRIPTION SHEET NO.
 PUMP CROSS SECTION EN10025 1

Project Document Number: CER-M-PCCD-139046
 Reference drawings:
 1) Outline Drawing: CER-M-PCCD-132971
 2) Piping and Instrument Diagram: CER-M-PCCD-132145
 3) DataSheet: CER-M-PCCD-92714

PARTLIST			PARTLIST			PARTLIST			PARTLIST		
FIND NO.	DESCRIPTION	MATERIAL	QTY	FIND NO.	DESCRIPTION	MATERIAL	QTY	FIND NO.	DESCRIPTION	MATERIAL	QTY
102.11	VOLUTE CASE	A890 5A	1	400.23	GASKET 0.5X152/132	REINZ APM 94	1	554.33	WASHER ISO 7089-20-200 HV-A4	A4	4
135.11	SLIDER PLATE	A890 5A	1	433.21	MECHANICAL SEAL H.8973/N.895	A890 5A	1	634.31	ADAPTER	A890 5A	1
230.11	IMPELLER	A890 5A	1	554.21	WASHER ISO 7089-16-200 HV-A4	A4	2	320.32	ANTI-FRICTION BEARING 7522 BECCM	SIF	2
412.11	C-RING 819.3X5.7	FKM	1	554.23	WASHER 8.4 DIN 9021	A4	1	901.32	HEXAGON HEAD SCREW M20X60	A4-80	4
412.12	C-RING 16.3X2.4 S.M5.1589	FKM	3	571.21	CLAMP	SS2324	1	903.31	HEXAGON HEAD SCREW M20X60	A4-80	4
412.14	C-RING 32.1X1.6 S.M5.1589	FKM	1	893.21	GUARD	EN 1.4301	1	901.32	HEXAGON HEAD SCREW M20X60	A4-80	4
554.11	WASHER ISO 7089-20-200 HV-A4	A4	20	893.22	GUARD	EN 1.4301	1	903.32	HEXAGON HEAD SCREW M20X60	A4-80	2
901.11	HEXAGON HEAD SCREW M20X60	A4-80	20	893.23	GUARD	EN 1.4301	1	412.21	C-RING 74.5X3 S.M5.1589	FKM	1
903.11	THREADED PLUG	EN 1.4410	1	901.21	HEXAGON HEAD SCREW M18X70	A4-80	2	976.21	MECHANICAL SEAL SIGN 89555	AISI 316L	1
903.13	THREADED PLUG	EN 1.4410	1	901.23	HEXAGON HEAD SCREW M8X55	A4-80	1	899.31	MEASURING STUD	AISI 316L	2
909.11	ADJUSTING SCREW M16X65	EN 1.4410	3	902.21	STUD M16X60 9A-C100	SS2324	4	970.31	SIGN SULZER LOGO	ENLAW 754	1
914.11	CAP SCREW SOCKET HD M30 X 80	EN 1.4410	1	903.22	THREADED PLUG	EN 1.4410	1	940.31	KEY	CR45K	1
920.11	NUT M16 ISOD492	A4-80	3	920.21	NUT M16 ISOD492	A4-80	4	270.31	SHAFT	EN 1.4410	1
161.21	CASE COVER	A890 5A	1	183.31	SUPPORT FOOT	A48 CL 30 B	1	320.31	ANTI-FRICTION BEARING NUP 320	SIF	1
400.21	GASKET 570-(44) /580-(42) X 0.5	REINZ APM 94	1	554.32	WASHER ISO 7089-20-200 HV-A4	A4	2				



© 2012 Sulzer Ltd. All rights reserved. This drawing is the property of Sulzer Ltd. and is not to be reproduced without the written consent of Sulzer Ltd. The information contained herein is confidential and its disclosure to third parties is strictly prohibited. The information contained herein is for reference only and does not constitute an offer or a contract. The information contained herein is subject to change without notice. The information contained herein is not to be used for any other purpose than the one intended. The information contained herein is not to be used for any other purpose than the one intended. The information contained herein is not to be used for any other purpose than the one intended.

REV: 0

NO.	DESCRIPTION	DATE	BY	CHECKED
1	update	2018.03.22	Zhangjun	BaGuanme
2	First issue	2018.02.21	Zou Peng	BaGuanme
3		2018.02.21	Zou Peng	BaGuanme

ACMP
 A890-00 SO
 Section Drawing for Auxiliary Cooling
 SAPP497847
 Part No. EN/PCS1003247140010-01
 1/2