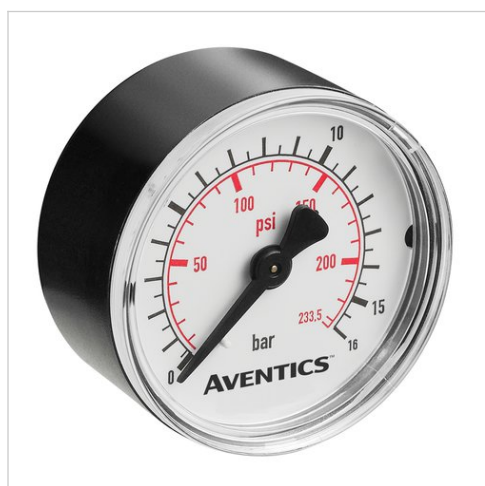
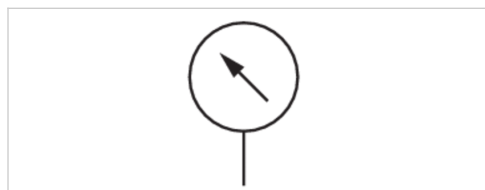


Pressure gauge, Series PG1-STD

- Back port
- corrosion-protected
- Background color White
- Scale color Black, Red
- Viewing window Polystyrene
- Units bar
- Units psi



| | |
|--------------------------------|-----------------------------|
| Type | Bourdon tube pressure gauge |
| Seal | Axial |
| Standardization | EN 837-1 |
| Ambient temperature min./max. | -40 ... 60 °C |
| Medium | Compressed air |
| Main scale unit (outside) | bar |
| Main scale color (outside) | Black |
| Secondary scale unit (inside) | psi |
| Secondary scale color (inside) | Red |
| Background color | White |
| Pointer color | Black |



Technical data

| Part No. | Compressed air connection | Nominal diameter | Range of application | Display range | Operating pressure | Scale value | Class |
|------------|---------------------------|------------------|----------------------|---------------|--------------------|-------------|-------|
| 1827231052 | M5 | 26 mm | 0 ... 8 bar | 0 ... 10 bar | 0 ... 10 bar | 1 | 1,6 |
| 3530200160 | R 1/8 | 40 mm | 0 ... 2 bar | 0 ... 2.5 bar | 0 ... 3 bar | 0.2 | 2,5 |
| 8901701290 | G 1/8 | 26 mm | 0 ... 3.2 bar | 0 ... 4 bar | 0 ... 4 bar | 0.25 | 4 |
| 8901701270 | G 1/8 | 26 mm | 0 ... 10 bar | 0 ... 12 bar | 0 ... 12 bar | 0.5 | 4 |
| 3530200130 | R 1/8 | 40 mm | 0 ... 1.2 bar | 0 ... 1.6 bar | 0 ... 1.6 bar | 0.1 | 2,5 |
| 3530200120 | R 1/8 | 40 mm | 0 ... 3.2 bar | 0 ... 4 bar | 0 ... 4 bar | 0.2 | 2,5 |
| 3530200110 | R 1/8 | 40 mm | 0 ... 4 bar | 0 ... 6 bar | 0 ... 6 bar | 0.2 | 2,5 |
| 3530200100 | R 1/8 | 40 mm | 0 ... 8 bar | 0 ... 10 bar | 0 ... 10 bar | 0.5 | 2,5 |
| 3530200150 | R 1/8 | 40 mm | 0 ... 10 bar | 0 ... 12 bar | 0 ... 12 bar | 0.5 | 2,5 |
| 3530200140 | R 1/8 | 40 mm | 0 ... 12 bar | 0 ... 16 bar | 0 ... 16 bar | 0.5 | 2,5 |
| 3530190150 | R 1/8 | 50 mm | 0 ... 1.2 bar | 0 ... 1.6 bar | 0 ... 1.6 bar | 0.1 | 2,5 |
| 3530190120 | R 1/8 | 50 mm | 0 ... 2.5 bar | 0 ... 3 bar | 0 ... 3 bar | 0.2 | 2,5 |
| 3530190130 | R 1/8 | 50 mm | 0 ... 3.2 bar | 0 ... 4 bar | 0 ... 4 bar | 0.2 | 2,5 |
| 3530190110 | R 1/8 | 50 mm | 0 ... 4 bar | 0 ... 6 bar | 0 ... 6 bar | 0.2 | 2,5 |
| 3530190100 | R 1/8 | 50 mm | 0 ... 10 bar | 0 ... 12 bar | 0 ... 12 bar | 0.5 | 2,5 |
| 3530190140 | R 1/8 | 50 mm | 0 ... 12 bar | 0 ... 16 bar | 0 ... 16 bar | 0.5 | 2,5 |
| 8901702070 | G 1/4 | 50 mm | 0 ... 10 bar | 0 ... 12 bar | 0 ... 12 bar | 0.5 | 2,5 |
| 8901702090 | G 1/4 | 63 mm | 0 ... 10 bar | 0 ... 12 bar | 0 ... 12 bar | 0.5 | 2,5 |

| Part No. | Compressed air connection | Nominal diameter | Ø A | B | C | D | F |
|------------|---------------------------|------------------|-----|----|----|------|----|
| 3530200150 | R 1/8 | 40 mm | 40 | 19 | 10 | 26 | 14 |
| 3530200140 | R 1/8 | 40 mm | 40 | 19 | 10 | 26 | 14 |
| 3530190150 | R 1/8 | 50 mm | 50 | 19 | 10 | 27 | 14 |
| 3530190120 | R 1/8 | 50 mm | 50 | 19 | 10 | 27 | 14 |
| 3530190130 | R 1/8 | 50 mm | 50 | 19 | 10 | 27 | 14 |
| 3530190110 | R 1/8 | 50 mm | 50 | 19 | 10 | 27 | 14 |
| 3530190100 | R 1/8 | 50 mm | 50 | 19 | 10 | 27 | 14 |
| 3530190140 | R 1/8 | 50 mm | 50 | 19 | 10 | 27 | 14 |
| 8901702070 | G 1/4 | 50 mm | 50 | 18 | 13 | 26.5 | 14 |
| 8901702090 | G 1/4 | 63 mm | 63 | 21 | 13 | 26.5 | 14 |