

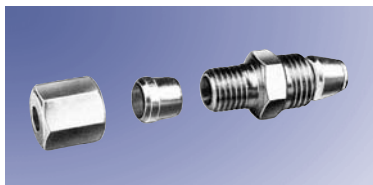
Dimensions

Model	Length	Width	Depth
SSVD 6	70 mm	60 mm	40 mm
SSVD 8	80 mm		
SSVD 10	100 mm		
SSVD 12	115 mm		
SSVD 14	130 mm		
SSVD 16	145 mm		
SSVD 18	160 mm		
SSVD 20	175 mm		
SSVD 22	190 mm		

Technical Data

number of outlets	6 to 22
inlet thread	R 1/8 or 1/8 NPTF
max. differential pressure between two outlets and the inlet	100 bar
max. pressure	350 bar
max. starting pressure	20 bar
metered volume per outlet and stroke in cm ³	0.08; 0.14; 0.2; 0.3; 0.4; 0.6; 0.8; 1.0; 1.4; 1.8
piston closure plug (piston detector)	M 11 x 1
outlet and metering screw thread	M 10 x 1
metering screws	0.08; 0.14; 0.2; 0.3; 0.4; 0.6; 0.8; 1.0; 1.4; 1.8

SSV and SSV-D Accessories



Check Valve, Threaded

Threaded Fittings

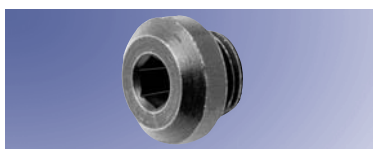
Part No.	Description
504-30345-2	check valve for 4 mm tube
504-30344-4	check valve for 6 mm tube
504-31709-1	check valve for 4 mm tube – stainless steel
504-31705-1	check valve for 6 mm tube – stainless steel



Check Valve, Quicklinc

Quicklinc – Plug-in Fittings

Part No.	Description
226-14091-4	check valve for 6 mm tube – high pressure (for primary metering devices)
226-14091-6	check valve for 4 mm tube – medium pressure (for secondary metering devices)
226-14091-2	check valve for 6 mm tube – medium pressure (for secondary metering devices)



Outlet Closure Plug

Other

Part No.	Description
303-17499-3	outlet closure plug M 10 x 1
303-19346-2	outlet closure plug M 10 x 1 - stainless steel
219-13798-3	o-ring for stainless steel closure plug*

* Only required when closure plug does not seal