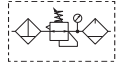


**Popular Combinations:** Inlet pressure 145 psig (10 bar), secondary pressure 100 psig (6.9 bar), 14.5 psig (1 bar) pressure drop.

**B**  
Global Air Preparation  
Introduction  
Filters  
Coalescers  
Regulators  
Filter / Regulators  
Lubricators  
Combinations  
Accessories and Kits



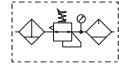
**Filter + Regulator + Lubricator Combinations, poly bowl**  
**5 micron element, 116 psig (8 bar) regulator + gauge and wall mounting brackets**



Port Size	Flow	Manual Drain	Pulse Drain
1/4"	27 scfm (13 dm <sup>3</sup> /s, ANR)	<b>P31CB92GEMN5LNW</b>	<b>P31CB92GEBN5LNW</b>



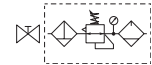
**Filter/Regulator + Lubricator Combinations, poly bowl**  
**5 micron element, 116 psig (8 bar) regulator + gauge and wall mounting brackets**



Port Size	Flow	Manual Drain	Pulse Drain
1/4"	28 scfm (14 dm <sup>3</sup> /s, ANR)	<b>P31CA92GEMN5LNW</b>	<b>P31CA92GEBN5LNW</b>



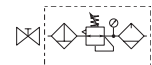
**Ball Valve + Filter + Regulator + Lubricator Combinations, poly bowl**  
**5 micron element, 116 psig (8 bar) regulator + gauge and wall mounting brackets**



Port Size	Flow	Manual Drain	Pulse Drain
1/4"	27 scfm (13 dm <sup>3</sup> /s, ANR)	<b>P31QB92GEMN5LNW</b>	<b>P31QB92GEBN5LNW</b>



**Ball Valve + Filter/Regulator + Lubricator Combinations, poly bowl**  
**5 micron element, 116 psig (8 bar) regulator + gauge and wall mounting brackets**



Port Size	Flow	Manual Drain	Pulse Drain
1/4"	28 scfm (14 dm <sup>3</sup> /s, ANR)	<b>P31QA92GEMN5LNW</b>	<b>P31QA92GEBN5LNW</b>

**Filter / Regulator coding**  
(use with codes: A M)

Filter coding (use with combo codes: B F G). For multiple filters, repeat as needed.	Regulator coding (use with combo code: B)	Lubricator coding (use with combo codes: A B)	Assembly configuration
<p><b>Filter coding</b></p> <p>5µ Element <b>E</b></p> <p>0.01µ Element <b>C</b></p> <p>1µ Element <b>9</b></p> <p>Adsorber <b>A</b></p> <p><b>Thread Type</b></p> <p>BSPP <b>1</b></p> <p>BSPT <b>2</b></p> <p>NPT <b>9</b></p> <p><b>Port Size</b></p> <p>1/4 <b>2</b></p> <p><b>Drain Type</b></p> <p>Manual Drain <b>M</b></p> <p>Pulse Drain <b>B</b></p>	<p><b>Regulator coding</b></p> <p>Relief / Adjustment</p> <p>Non-Rising Knob <b>N</b></p> <p><b>Adjustment Range</b></p> <p><b>With Square Gauge</b></p> <p><b>Psig:</b></p> <p>30 psig* <b>1</b></p> <p>60 psig <b>3</b></p> <p>125 psig <b>5</b></p> <p>232 psig <b>7</b></p> <p><b>Bar:</b></p> <p>2 Bar* <b>V</b></p> <p>4 Bar <b>S</b></p> <p>8 Bar <b>T</b></p> <p>16 Bar <b>W</b></p>	<p><b>Lubricator coding</b></p> <p><b>Lub Type</b></p> <p>Oil Mist Standard Sight Dome <b>L</b></p> <p><b>Drain Type</b></p> <p>No Drain; Closed End <b>N</b></p>	<p><b>Assembly configuration</b></p> <p><b>Mounting</b></p> <p>No Bracket <b>A</b></p> <p>Port Blocks* <b>C</b></p> <p>Port Blocks &amp; Wall Brkt* <b>D</b></p> <p>Wall Bracket <b>W</b></p> <p>* For 3/8" Port Blocks please order separately. See Kits section.</p>

**P31 C B 9 2 G**

**Combination**

B/V + Combination **Q**

Combination + B/V **X**

Combination **C**

B/V = Ball valve

**Combination Type\***

F/R+L <b>A</b>	F+Fc+Fa <b>G</b>
F+R+L <b>B</b>	F/R+Fc <b>M</b>
F+Fc <b>F</b>	

\* Combination type  
F = 5µ  
Fc1 = 1µ  
Fc = .01µ  
Fa = Adsorber

**Bowl Type**

Poly Bowl with Bowl Guard † **G**

Metal Bowl without Sight Gauge **M**

**Note:** All bowl types are the same for each component

**Example:** If a "G" is specified for a F+L, both units would get a poly bowl with bowl guard.

† For polycarbonate bowl, see caution in Engineering Section A.

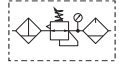


For inventory, lead times, and kit lookup, visit [www.pdnplu.com](http://www.pdnplu.com)

**Popular Combinations:** Inlet pressure 145 psig (10 bar), secondary pressure 91.3 psig (6.3 bar), 14.5 psig (1 bar) pressure drop.



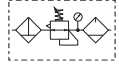
**Filter + Regulator + Lubricator Combinations, poly bowl**  
**5 micron element, 116 psig (8 bar) regulator + gauge and wall mounting brackets**



Port Size	Flow	Manual Drain	Auto Drain
1/4"	42 scfm (20 dm <sup>3</sup> /s, ANR)	<b>P32CB92GEMNGLNW</b>	<b>P32CB92GEANGLNW</b>
3/8"	68 scfm (32 dm <sup>3</sup> /s, ANR)	<b>P32CB93GEMNGLNW</b>	<b>P32CB93GEANGLNW</b>
1/2"	85 scfm (40 dm <sup>3</sup> /s, ANR)	<b>P32CB94GEMNGLNW</b>	<b>P32CB94GEANGLNW</b>



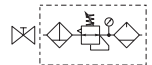
**Filter/Regulator + Lubricator Combinations, poly bowl**  
**5 micron element, 116 psig (8 bar) regulator + gauge and wall mounting brackets**



Port Size	Flow	Manual Drain	Auto Drain
1/4"	45 scfm (22 dm <sup>3</sup> /s, ANR)	<b>P32CA92GEMNGLNW</b>	<b>P32CA92GEANGLNW</b>
3/8"	70 scfm (33 dm <sup>3</sup> /s, ANR)	<b>P32CA93GEMNGLNW</b>	<b>P32CA93GEANGLNW</b>
1/2"	90 scfm (43 dm <sup>3</sup> /s, ANR)	<b>P32CA94GEMNGLNW</b>	<b>P32CA94GEANGLNW</b>



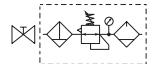
**Ball Valve + Filter + Regulator + Lubricator Combinations, poly bowl**  
**5 micron element, 116 psig (8 bar) regulator + gauge and wall mounting brackets**



Port Size	Flow	Manual Drain	Auto Drain
1/4"	42 scfm (20 dm <sup>3</sup> /s, ANR)	<b>P32QB92GEMNGLNW</b>	<b>P32QB92GEANGLNW</b>
3/8"	68 scfm (32 dm <sup>3</sup> /s, ANR)	<b>P32QB93GEMNGLNW</b>	<b>P32QB93GEANGLNW</b>
1/2"	85 scfm (40 dm <sup>3</sup> /s, ANR)	<b>P32QB94GEMNGLNW</b>	<b>P32QB94GEANGLNW</b>



**Ball Valve + Filter/Regulator + Lubricator Combinations, poly bowl**  
**5 micron element, 116 psig (8 bar) regulator + gauge and wall mounting brackets**



Port Size	Flow	Manual Drain	Auto Drain
1/4"	45 scfm (22 dm <sup>3</sup> /s, ANR)	<b>P32QA92GEMNGLNW</b>	<b>P32QA92GEANGLNW</b>
3/8"	70 scfm (33 dm <sup>3</sup> /s, ANR)	<b>P32QA93GEMNGLNW</b>	<b>P32QA93GEANGLNW</b>
1/2"	90 scfm (43 dm <sup>3</sup> /s, ANR)	<b>P32QA94GEMNGLNW</b>	<b>P32QA94GEANGLNW</b>

**Filter / Regulator coding**  
 (use with codes: A M)

**Filter coding**  
 (use with combo codes: B F G). For multiple filters, repeat as needed.

**Regulator coding**  
 (use with combo code: B)

**Lubricator coding**  
 (use with combo codes: A B)

**Assembly configuration**

<p><b>P32</b></p> <p><b>Combination</b></p> <p>B/V + Combination <b>Q</b></p> <p>Combination + B/V <b>X</b></p> <p>Combination <b>C</b></p> <p>B/V = Ball valve</p> <p><b>Combination Type*</b></p> <table border="1"> <tr> <td>F/R+L <b>A</b></td> <td>F+Fc+Fa <b>G</b></td> </tr> <tr> <td>F+R+L <b>B</b></td> <td>F/R+Fc <b>M</b></td> </tr> <tr> <td>F+Fc <b>F</b></td> <td></td> </tr> </table> <p>* Combination type              F = 5μ              Fc1 = 1μ              Fc = .01μ              Fa = Adsorber</p> <p>† For polycarbonate bowl, see caution in Engineering Section A.</p>	F/R+L <b>A</b>	F+Fc+Fa <b>G</b>	F+R+L <b>B</b>	F/R+Fc <b>M</b>	F+Fc <b>F</b>		<p><b>C</b></p> <p><b>Thread Type</b></p> <p>BSPP <b>1</b></p> <p>BSPT <b>2</b></p> <p>NPT <b>9</b></p> <p><b>Port Size</b></p> <table border="1"> <tr> <td>1/4" <b>2*</b></td> </tr> <tr> <td>3/8" <b>3</b></td> </tr> <tr> <td>1/2" <b>4</b></td> </tr> </table> <p>* Order combo Q or X: ball valve (BV) comes with 3/8 ports.</p> <p><b>Bowl Type</b></p> <table border="1"> <tr> <td>Poly Bowl with Bowl Guard ‡ <b>G</b></td> </tr> <tr> <td>Metal Bowl without Sight Gauge <b>M*</b></td> </tr> <tr> <td>Metal Bowl with Sight Gauge <b>S</b></td> </tr> </table> <p>* Not available when using lubricator.              † Note: All bowl types are the same for each component.              ‡ Example: If a "G" is specified for a F+L, both units would get a poly bowl with bowl guard.</p>	1/4" <b>2*</b>	3/8" <b>3</b>	1/2" <b>4</b>	Poly Bowl with Bowl Guard ‡ <b>G</b>	Metal Bowl without Sight Gauge <b>M*</b>	Metal Bowl with Sight Gauge <b>S</b>	<p><b>9 4 G</b></p> <p><b>Element</b></p> <table border="1"> <tr> <td>0.01μ Element <b>C</b></td> </tr> <tr> <td>0.01μ Element with dpi <b>D*</b></td> </tr> <tr> <td>5μ Element <b>E</b></td> </tr> <tr> <td>5μ Element with dpi <b>F*</b></td> </tr> <tr> <td>1μ Element <b>9</b></td> </tr> <tr> <td>1μ Element with dpi <b>Q*</b></td> </tr> <tr> <td>Adsorber <b>A</b></td> </tr> </table> <p>* Not available with F/R.</p> <p><b>Drain Type</b></p> <table border="1"> <tr> <td>Auto Drain <b>A</b></td> </tr> <tr> <td>Manual Drain <b>M</b></td> </tr> </table>	0.01μ Element <b>C</b>	0.01μ Element with dpi <b>D*</b>	5μ Element <b>E</b>	5μ Element with dpi <b>F*</b>	1μ Element <b>9</b>	1μ Element with dpi <b>Q*</b>	Adsorber <b>A</b>	Auto Drain <b>A</b>	Manual Drain <b>M</b>	<p><b>E M</b></p> <p><b>Relief / Adjustment</b></p> <p>Non-Rising Knob <b>N</b></p> <p>Relieving</p> <p><b>Adjustment Range</b></p> <table border="1"> <tr> <th colspan="2">With Round Gauge</th> </tr> <tr> <td>30 psig; 2 Bar; 0.2 MPa</td> <td><b>Z</b></td> </tr> <tr> <td>60 psig; 4 Bar; 0.4 MPa</td> <td><b>M</b></td> </tr> <tr> <td>125 psig; 8 Bar; 0.8 MPa</td> <td><b>G</b></td> </tr> <tr> <td>250 psig; 17 Bar; 1.7 MPa</td> <td><b>J</b>†</td> </tr> <tr> <th colspan="2">Without Gauge</th> </tr> <tr> <td>30 psig; 2 Bar; 0.2 MPa</td> <td><b>Y</b></td> </tr> <tr> <td>60 psig; 4 Bar; 0.4 MPa</td> <td><b>L</b></td> </tr> <tr> <td>125 psig; 8 Bar; 0.8 MPa</td> <td><b>N</b></td> </tr> <tr> <td>250 psig; 17 Bar; 1.7 MPa</td> <td><b>H</b>‡</td> </tr> </table> <p>† Not available with F/R.</p>	With Round Gauge		30 psig; 2 Bar; 0.2 MPa	<b>Z</b>	60 psig; 4 Bar; 0.4 MPa	<b>M</b>	125 psig; 8 Bar; 0.8 MPa	<b>G</b>	250 psig; 17 Bar; 1.7 MPa	<b>J</b> †	Without Gauge		30 psig; 2 Bar; 0.2 MPa	<b>Y</b>	60 psig; 4 Bar; 0.4 MPa	<b>L</b>	125 psig; 8 Bar; 0.8 MPa	<b>N</b>	250 psig; 17 Bar; 1.7 MPa	<b>H</b> ‡	<p><b>N G</b></p> <p><b>Lub Type</b></p> <p>Oil Mist Standard Sight Dome <b>L</b></p> <p><b>Drain Type</b></p> <p>No Drain; Closed End <b>N</b></p>	<p><b>L N</b></p> <p><b>Mounting</b></p> <table border="1"> <tr> <td>No Bracket <b>A</b></td> </tr> <tr> <td>Port Blocks <b>C</b></td> </tr> <tr> <td>Port Blocks &amp; Wall Brkt <b>D</b></td> </tr> <tr> <td>Wall Bracket <b>W</b></td> </tr> </table> <p>* Regulator comes with gauge respective to the adjustment range selected.              ‡ Not available with poly bowl with bowl guard.</p>	No Bracket <b>A</b>	Port Blocks <b>C</b>	Port Blocks & Wall Brkt <b>D</b>	Wall Bracket <b>W</b>
F/R+L <b>A</b>	F+Fc+Fa <b>G</b>																																																	
F+R+L <b>B</b>	F/R+Fc <b>M</b>																																																	
F+Fc <b>F</b>																																																		
1/4" <b>2*</b>																																																		
3/8" <b>3</b>																																																		
1/2" <b>4</b>																																																		
Poly Bowl with Bowl Guard ‡ <b>G</b>																																																		
Metal Bowl without Sight Gauge <b>M*</b>																																																		
Metal Bowl with Sight Gauge <b>S</b>																																																		
0.01μ Element <b>C</b>																																																		
0.01μ Element with dpi <b>D*</b>																																																		
5μ Element <b>E</b>																																																		
5μ Element with dpi <b>F*</b>																																																		
1μ Element <b>9</b>																																																		
1μ Element with dpi <b>Q*</b>																																																		
Adsorber <b>A</b>																																																		
Auto Drain <b>A</b>																																																		
Manual Drain <b>M</b>																																																		
With Round Gauge																																																		
30 psig; 2 Bar; 0.2 MPa	<b>Z</b>																																																	
60 psig; 4 Bar; 0.4 MPa	<b>M</b>																																																	
125 psig; 8 Bar; 0.8 MPa	<b>G</b>																																																	
250 psig; 17 Bar; 1.7 MPa	<b>J</b> †																																																	
Without Gauge																																																		
30 psig; 2 Bar; 0.2 MPa	<b>Y</b>																																																	
60 psig; 4 Bar; 0.4 MPa	<b>L</b>																																																	
125 psig; 8 Bar; 0.8 MPa	<b>N</b>																																																	
250 psig; 17 Bar; 1.7 MPa	<b>H</b> ‡																																																	
No Bracket <b>A</b>																																																		
Port Blocks <b>C</b>																																																		
Port Blocks & Wall Brkt <b>D</b>																																																		
Wall Bracket <b>W</b>																																																		



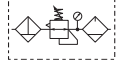
For inventory, lead times, and kit lookup, visit [www.pdnplu.com](http://www.pdnplu.com)

**Popular Combinations:** Inlet pressure 145 psig (10 bar), secondary pressure 91.3 psig (6.3 bar), 14.5 psig (1 bar) pressure drop.

**B**  
 Global Air Preparation  
 Introduction  
 Filters  
 Coalescers  
 Regulators  
 Filter / Regulators  
 Lubricators  
 Combinations  
 Accessories and Kits



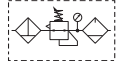
**Filter + Regulator + Lubricator Combinations, poly bowl**  
**5 micron element, 116 psig (8 bar) regulator + gauge and wall mounting brackets**



Port Size	Flow	Manual Drain	Auto Drain
1/2"	90 scfm (43 dm <sup>3</sup> /s, ANR)	<b>P33CB94GEMNGLNW</b>	<b>P33CB94GEANGLNW</b>
3/4"	110 scfm (52 dm <sup>3</sup> /s, ANR)	<b>P33CB96GEMNGLNW</b>	<b>P33CB96GEANGLNW</b>



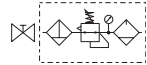
**Filter/Regulator + Lubricator Combinations, poly bowl**  
**5 micron element, 116 psig (8 bar) regulator + gauge and wall mounting brackets**



Port Size	Flow	Manual Drain	Auto Drain
1/2"	110 scfm (52 dm <sup>3</sup> /s, ANR)	<b>P33CA94GEMNGLNW</b>	<b>P33CA94GEANGLNW</b>
3/4"	150 scfm (71 dm <sup>3</sup> /s, ANR)	<b>P33CA96GEMNGLNW</b>	<b>P33CA96GEANGLNW</b>



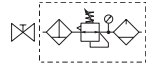
**Ball Valve + Filter + Regulator + Lubricator Combinations, poly bowl**  
**5 micron element, 116 psig (8 bar) regulator + gauge and wall mounting brackets**



Port Size	Flow	Manual Drain	Auto Drain
1/2"	90 scfm (43 dm <sup>3</sup> /s, ANR)	<b>P33QB94GEMNGLNW</b>	<b>P33QB94GEANGLNW</b>
3/4"	110 scfm (52 dm <sup>3</sup> /s, ANR)	<b>P33QB96GEMNGLNW</b>	<b>P33QB96GEANGLNW</b>



**Ball Valve + Filter/Regulator + Lubricator Combinations, poly bowl**  
**5 micron element, 116 psig (8 bar) regulator + gauge and wall mounting brackets**



Port Size	Flow	Manual Drain	Auto Drain
1/2"	110 scfm (52 dm <sup>3</sup> /s, ANR)	<b>P33QA94GEMNGLNW</b>	<b>P33QA94GEANGLNW</b>
3/4"	150 scfm (71 dm <sup>3</sup> /s, ANR)	<b>P33QA96GEMNGLNW</b>	<b>P33QA96GEANGLNW</b>

**Filter / Regulator coding**  
 (use with codes: A M)

Filter coding (use with combo codes: B F G). For multiple filters, repeat as needed.	Regulator coding (use with combo code: B)	Lubricator coding (use with combo codes: A B)	Assembly configuration
---	--	---	---------------------------

P33	C	B	9	6	G	E	M	N	G	L	N	W
<b>Combination</b> B/V + Combination <b>Q</b> Combination + B/V <b>X</b> Combination <b>C</b> B/V = Ball valve	<b>Thread Type</b> BSPP <b>1</b> BSPT <b>2</b> NPT <b>9</b>	<b>Element</b> 0.01µ Element <b>C</b> 0.01µ Element with dpi <b>D*</b> 5µ Element <b>E</b> 5µ Element with dpi <b>F*</b> 1µ Element <b>9</b> 1µ Element with dpi <b>Q*</b> Adsorber <b>A</b> * Not available with F/R.	<b>Relief / Adjustment</b> Non-Rising Knob <b>N</b> Relieving	<b>Adjustment Range</b> <b>With Round Gauge</b> 30 psig; 2 bar; 0.2 MPa <b>Z</b> 60 psig; 4 bar; 0.4 MPa <b>M</b> 125 psig; 8 bar; 0.8 MPa <b>G</b> 250 psig; 17 bar; 1.7 MPa <b>J*</b> <b>Without Gauge</b> 30 psig; 2 bar; 0.2 MPa <b>Y</b> 60 psig; 4 bar; 0.4 MPa <b>L</b> 125 psig; 8 bar; 0.8 MPa <b>N</b> 250 psig; 17 bar; 1.7 MPa <b>H*</b> * Not available with poly bowl with bowl guard.	<b>Lub Type</b> Oil Mist <b>L</b> Standard <b>L</b> Sight Dome	<b>Drain Type</b> No Drain; Closed End <b>N</b>	<b>Mounting</b> No Bracket <b>A</b> Port Blocks <b>C</b> Port Blocks & Wall Brkt <b>D</b> Wall Bracket <b>W</b>					
<b>Combination Type*</b> F/R+L <b>A</b> F+Fc+Fa <b>G</b> F+R+L <b>B</b> F/R+Fc <b>M</b> F+Fc <b>F</b>	<b>Port Size</b> 1/2 <b>4</b> 3/4 <b>6</b>	<b>Bowl Type †</b> Poly Bowl with Bowl Guard <b>G</b> Metal Bowl without Sight Gauge <b>M*</b> Metal Bowl with Sight Gauge <b>S</b>	<b>Drain Type</b> Auto Drain <b>A</b> Manual Drain <b>M</b>									
<p>* Combination type                      F = 5µ                      Fc = 1µ                      Fc = .01µ                      Fa = Adsorber</p> <p>† For polycarbonate bowl, see caution in Engineering Section A.</p> <p>* Not available when using lubricator.                      Note: All bowl types are the same for each component.                      Example: If a "G" is specified for a F+L, both units would get a poly bowl with bowl guard.</p>												



For inventory, lead times, and kit lookup, visit [www.pdnplu.com](http://www.pdnplu.com)