

6.8 Parts Lists and Cross Sections of Power End

6.8.1 Parts List for Model M1

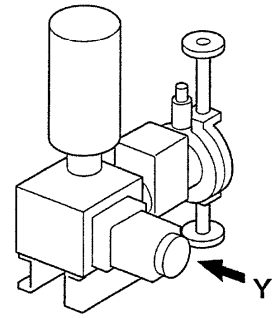
ITEM	Part Name	MV Q'TY	MH Q'TY
A21G	Adapter	0	0[1]
A24A	Plunger Adapter	1	1
A25A	Liquid End Adapter	1	1
AC04	Crank Assembly	1SET	1SET
C04C	Crank	(1)	(1)
C06A	Cam	(1)	(1)
S03J	Hollow Shaft	(1)	(1)
AJ11	Indicator Unit	1SET	1SET
A1NB	Nut	(1)	(1)
B04R	Bracket	(1)	(1)
B08J	Bush	(1)	(1)
C1MG	Machine Screw	(4)	(4)
C1MK	Machine Screw	(1)	(1)
G01G	Gear (B)	(1)	(1)
G01H	Gear (C)	(1)	(1)
J11F	Indicator	(1)	(1)
W2AK	Washer	(2)	(2)
W5BC	Spring Washer	(1)	(1)
AS02	Lead Screw Assembly	1SET	1SET
C01D	Cap	(1)	(1)
N5AB	Spring Pin	(1)	(1)
S02A	Lead Screw	(1)	(1)
B01A	Ball Bearing	1	1
B01B	Ball Bearing	1	1
B01C	Tapered Roller Bearing	1	1
B01D	Needle Bearing	1	1
B01K	Ball Bearing	1	1
B01S	Ball Bearing	1	1
B04F	Motor Bracket	1	1
B08K	Bush	1	1
B15A	Breather	1	1
B1MC	Hexagon Head Bolt	4	4
B1NC	Hexagon Head Bolt	1	1
B5AA	Cap Bolt	4	4
B5AB	Cap Bolt	2	2
B5AC	Cap Bolt	4	4
B5AG	Cap Bolt	1	1
B5CA	Cap Bolt	4	4[8]
C01A	Cap	1	1
C02R	Indicator Cover	1	1
C03A	Crosshead	1	1
C05A	Connecting Rod	1	1
C08A	Coupling Cushion	1	1
C08D	Coupling Cushion	0	0[1]
C09B	Coupling (Motor side)	1	1
C09C	Coupling (Pump side)	1	1
C09E	Coupling	0	0[1]
C17B	Collar	0	1[2]
C1MH	Machine Screw	2	2
C1MJ	Machine Screw	4	4

ITEM	Part Name	MV Q'TY	MH Q'TY
C2MD	Machine Screw	1	1
E2MB	Set Screw	1	1
E2MH	Set Screw	2	2[4]
E2MK	Set Screw	2	2
E3MC	Set Screw	2	2
F01A	Crank Case (Pump Frame)	1	1
F1WA	Plug	1	1
G10A	Oil Gauge (A)	1	1
H01A	Housing (B)	1	1
H01M	Housing (A)	1	1
H02C	Indicator Head	1	1
H03C	Handle	1	1
K01E	Key	1	1
K02A	Knob	1	1
K6AA	Key	1	1[2]
L1WK	Plug	1	1
L1WQ	Plug	0	1
L1WR	Plug	1	0
M01A	Motor	1	1
N12B	Nut	1	1
N7AB	Snap Ring	2	2
P01J	Plate	1	1
P03B	Crosshead Pin	1	1
P03C	Pin	1	1
P13D	Name Plate	1	1
R02A	Rivet	4	4
R03C	Ring	1	1
S03L	Gear Shaft	1	1
S06A	Segment	1SET	1SET
S15A	Shim	1SET	1SET
S15B	Shim	1SET	1SET
S15C	Shim	1SET	1SET
W01A	Washer	1	1
W02A	Worm Wheel	1	1
W03B	Worm Shaft	1	1
W5AA	Spring Washer	1	1
Y11A	Oil Seal	0	1[2]
Y11B	Packing	2<->	2<->
Y12A	O-ring	1	1
Y2K	O-ring	1	1
Y72A	O-ring	1	1[2]
Y72B	O-ring	1	1
Y72C	O-ring	1	1
Y72D	O-ring	1	1
Y72E	O-ring	1	1
Y72F	O-ring	1	1
Y72G	O-ring	1	1

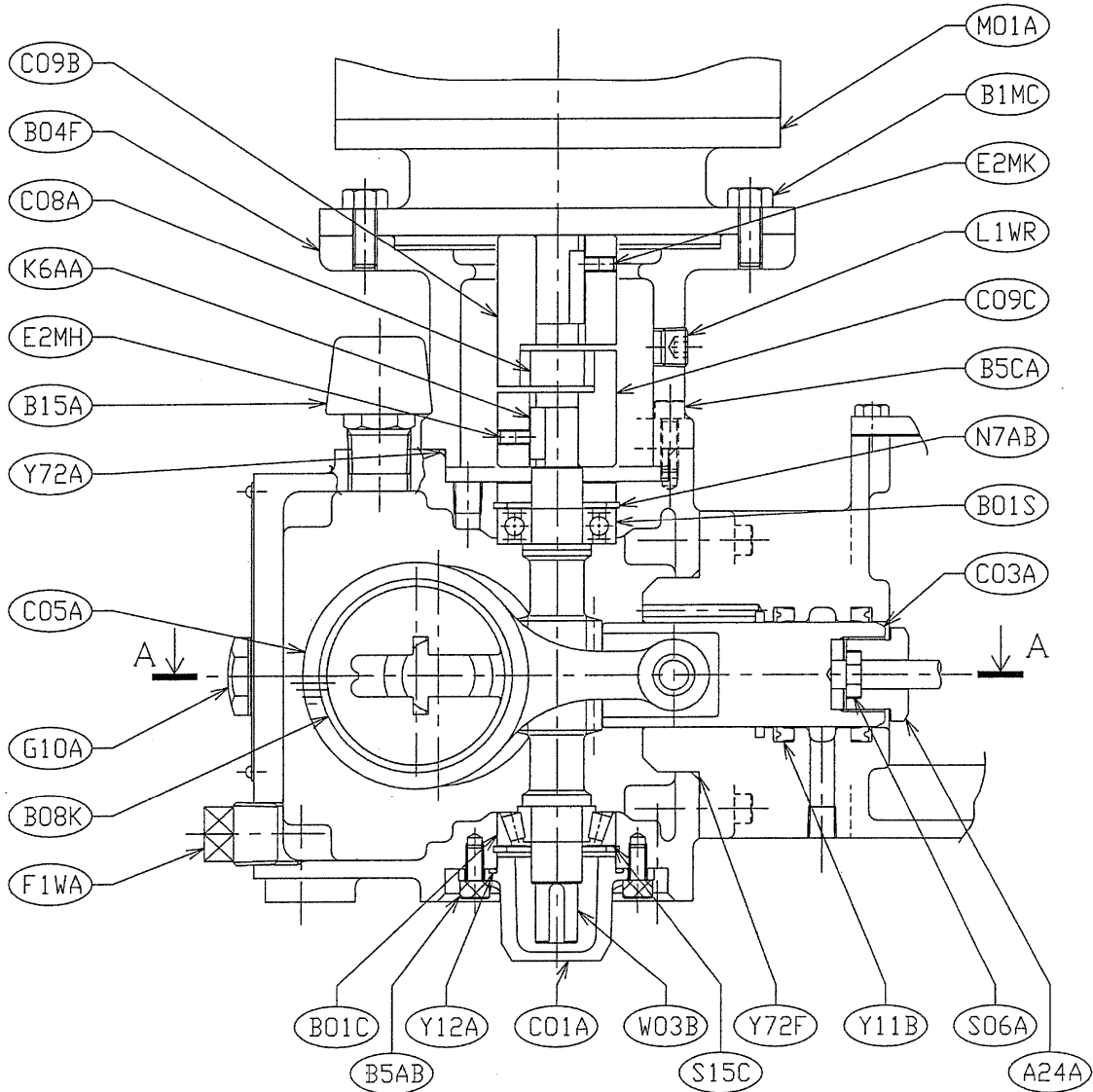
NOTE:

1. () Parenthesize Q'TY are required for one (1) set.
2. [] Q'TY are required for multiplex type.
3. <-> Q'TY are required for head-size-DV-0.6- and packed-plunger type.

6.8.2 Cross Section of Model M1
Model M1 (MV) -1/2



View Y



Model M1 (MV) -2/2

