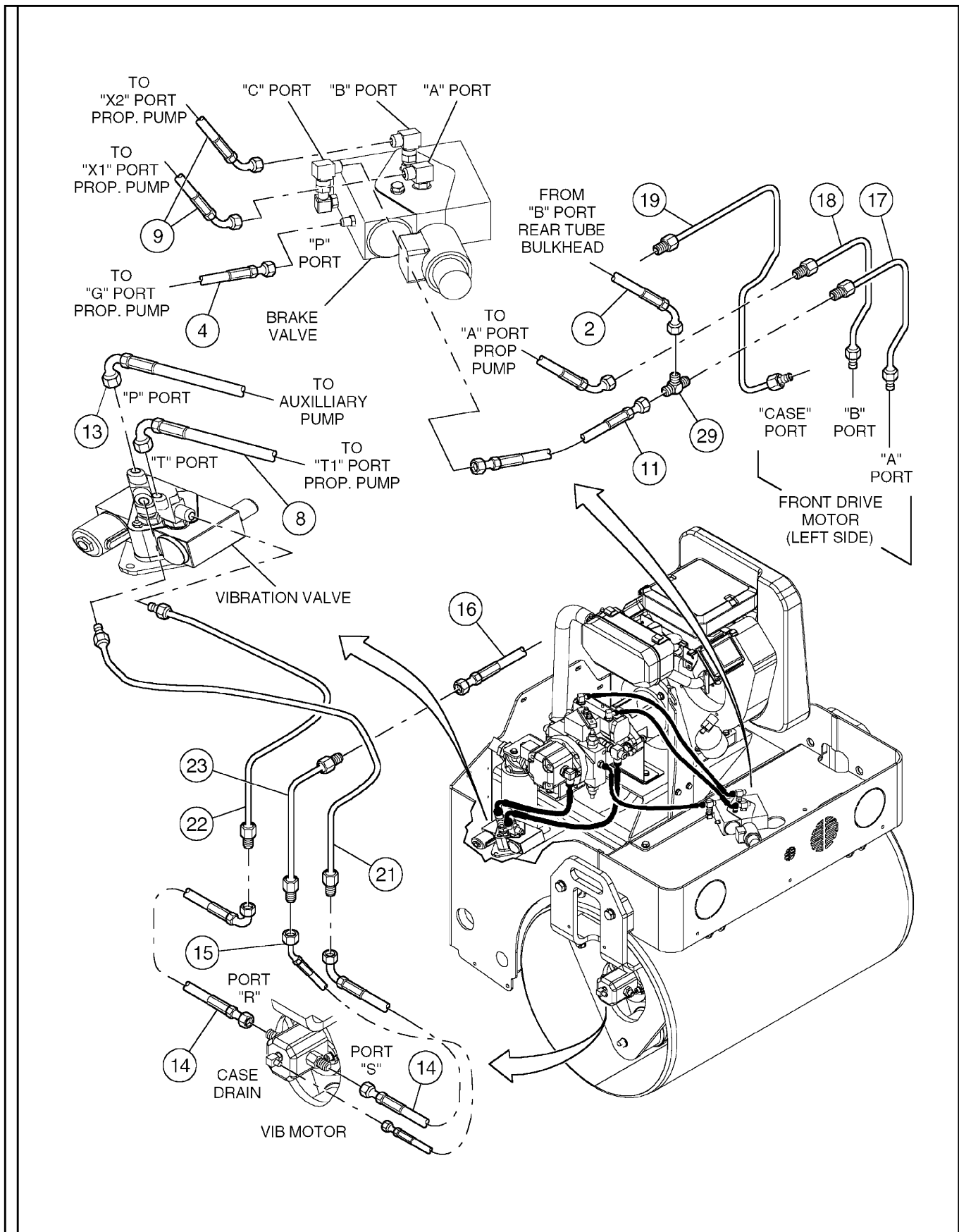


HYDRAULIC HOISING/TUBE CLAMP INSTALLATION - SHEET 1 OF 4



HYDRAULIC HOISING/TUBE CLAMP INSTALLATION - SHEET 1 OF 4

ITEM	COMM.NO.	DESCRIPTION	QTY	DIMENSIONS/NOTES
		BOM 59268771		
2	54488218	Hose Assembly	1	84.0"
4	54488101	Hose Assembly	1	18.0"
8	54488077	Hose Assembly	1	33.5"
9	59289017	Hose Assembly	2	22.0"
11	54488184	Hose Assembly	1	30.0"
13	54488168	Hose Assembly	1	15.0"
14	59219436	Hose Assembly	2	15.0"
15	59219493	Hose Assembly	1	18.0"
16	59118752	Hose Assembly (Effective with s/n 163047)	1	19.0"
-	58975558	Hose Assembly (Prior to s/n 163047)	1	22.0"
17	59267740	Tube (Front Drive Motor to Brake Valve)	1	
18	59267757	Tube (Front Drive Motor to Propulsion Pump)	1	
19	59267765	Tube (Front Drive Motor)	1	
21	59268193	Tube (Vibration Motor to Vibration Valve)	1	
22	59268201	Tube (Vibration Motor to Front Drive Motor)	1	
23	59268219	Tube (Vibration Motor to Vibration Valve)	1	
29	95416731	Tee (Effective with s/n 163818)	1	
-	95703625	Tee (Prior to s/n 163818)	1	