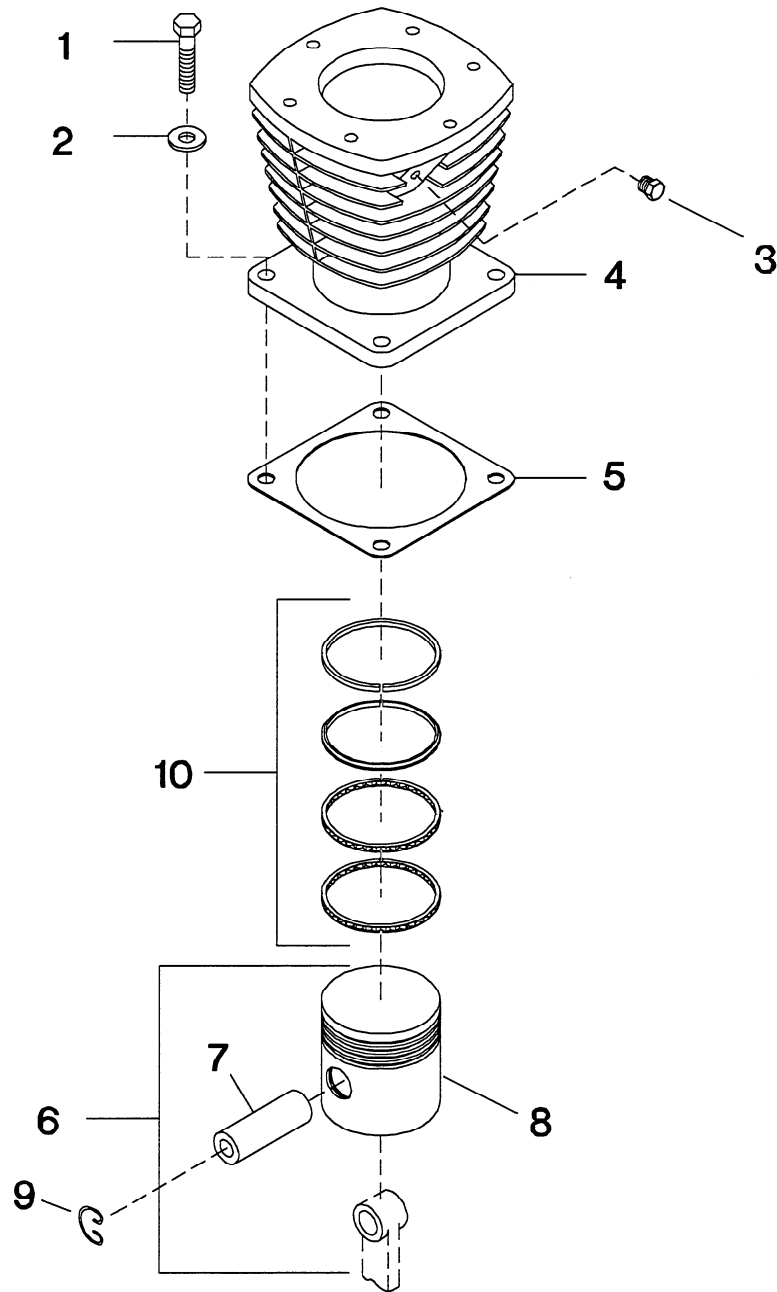
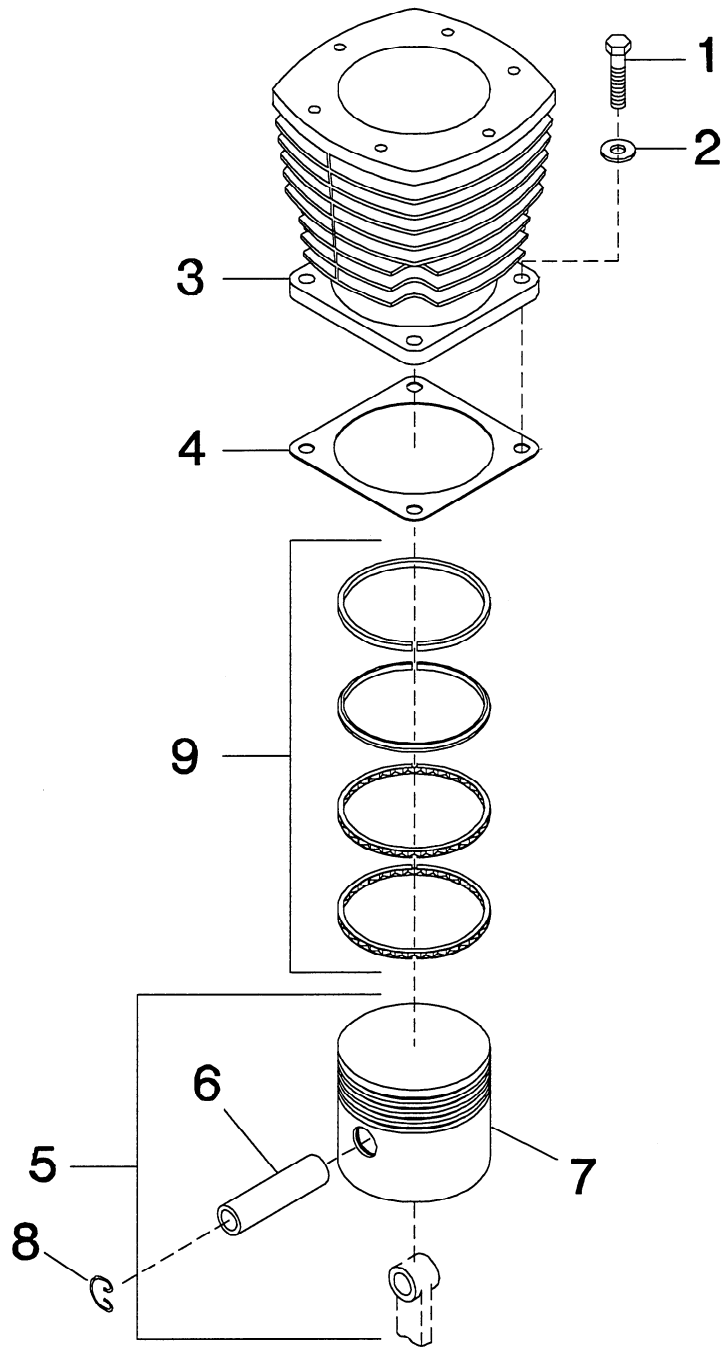


FIGURE 5. SECOND STAGE (HIGH PRESSURE) CYLINDER & PISTON.



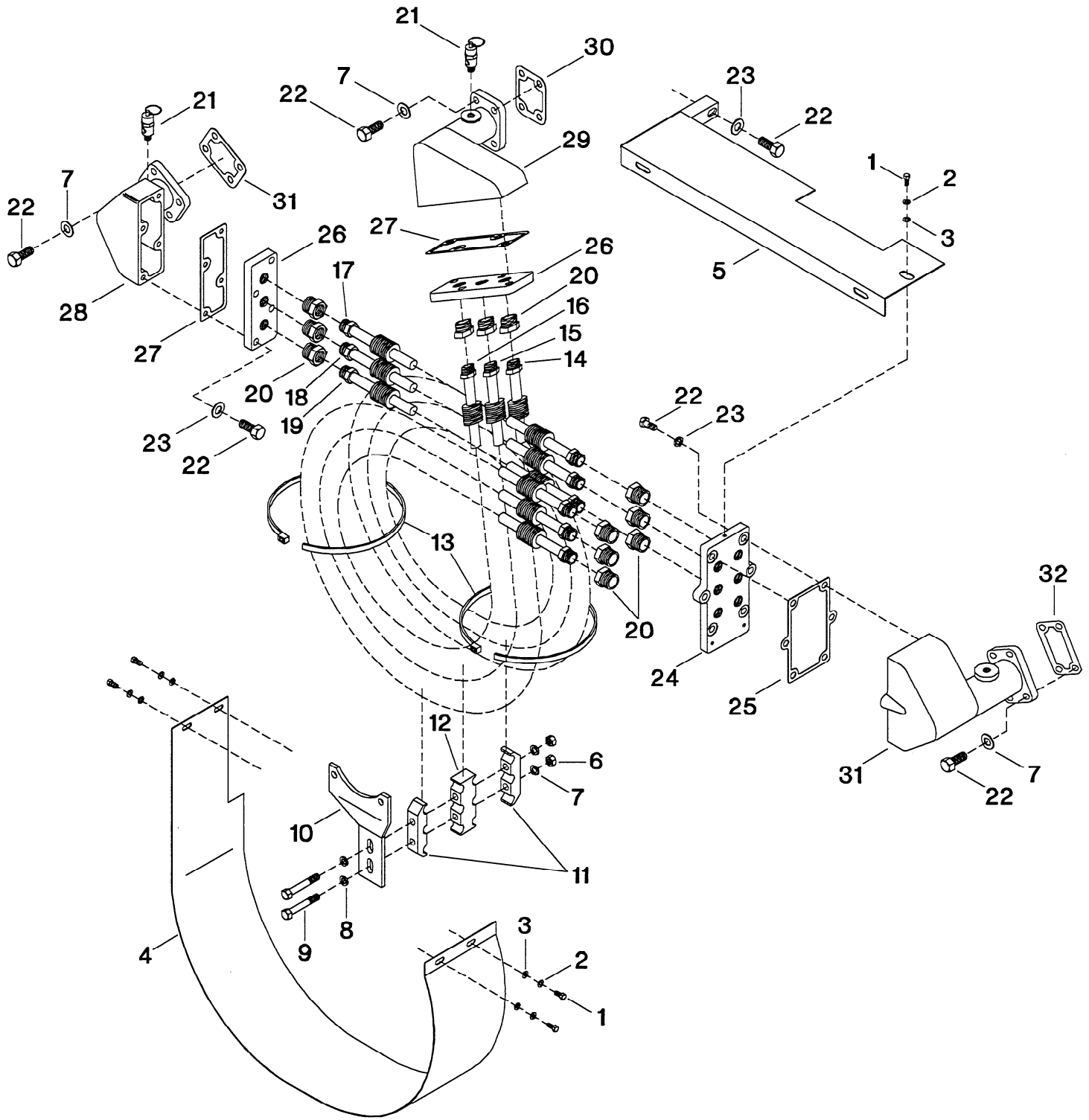
| REF. NO. | PART NO. | DESCRIPTION | QTY. | SPARES | | |
|----------|----------|--------------------------------------|------|--------|---|---|
| | | | | 1 | 2 | 3 |
| 5-1 | 95053567 | CAPSCREW, HEX HEAD - 1/2-13 X 1-1/4" | 4 | | | |
| 5-2 | 95674701 | WASHER, COPPER - 1/2" | 4 | | | |
| 5-3 | 95252409 | PLUG, PIPE - HEX HEAD - 1/4" | 1 | | | |
| 5-4 | 32172165 | CYLINDER, SECOND STAGE | 1 | | | |
| 5-5 | 30294235 | GASKET, FLANGE | 1 | 1 | 1 | 2 |
| 5-6 | 32054520 | ASSEMBLY, PISTON/PIN - 4" | 1 | | 1 | 1 |
| 5-7 | 37131695 | • PIN, PISTON | 1 | | | |
| 5-8 | NSS | • PISTON - 4" | 1 | | | |
| 5-9 | 30288450 | RING, LOCK | 2 | | | |
| 5-10 | 32194151 | SET, RING - 4" | 1 | 1 | 1 | 2 |

Figure 6. First Stage (Low Pressure) Cylinder & Piston Assembly.



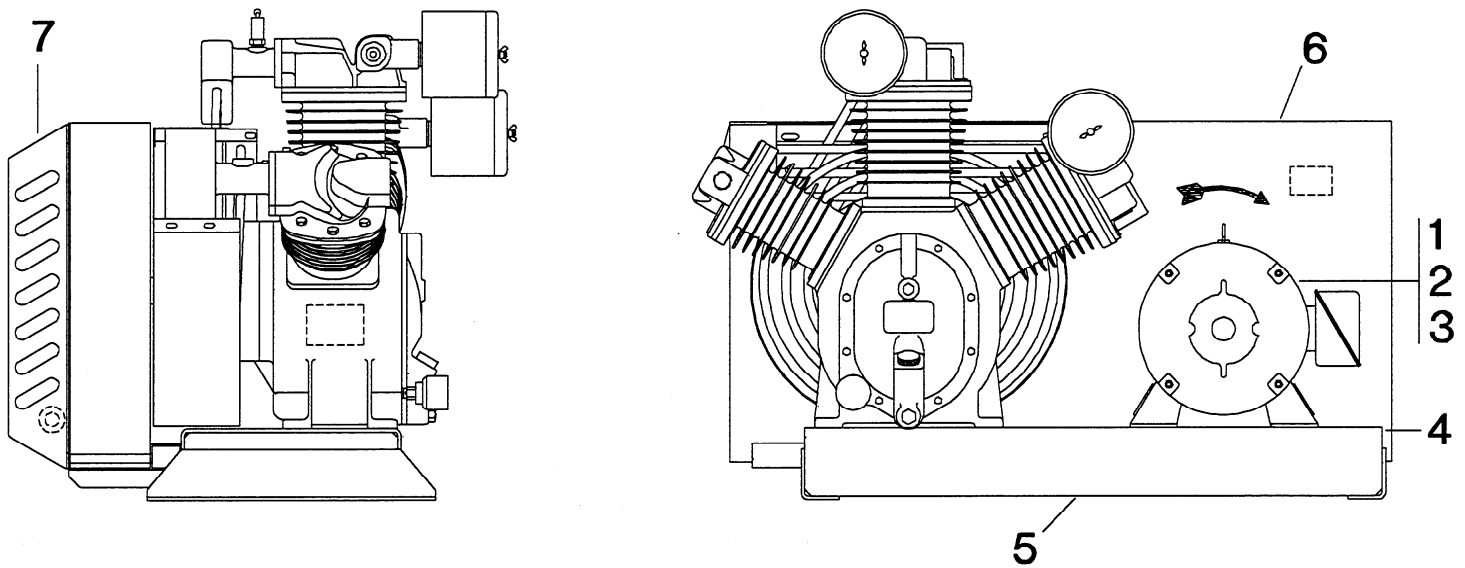
| REF. NO. | PART NO. | DESCRIPTION | QTY. | SPARES | | |
|----------|----------|--------------------------------------|------|--------|---|---|
| | | | | 1 | 2 | 3 |
| 6-1 | 95053567 | CAPSCREW, HEX HEAD - 1/2-13 X 1-1/4" | 8 | | | |
| 6-2 | 95674701 | WASHER, COPPER - 1/2" | 8 | | | |
| 6-3 | 32172157 | CYLINDER, FIRST STAGE | 2 | | | |
| 6-4 | 30294235 | GASKET, FLANGE | 2 | 2 | 2 | 4 |
| 6-5 | 32054512 | ASSEMBLY, PISTON/PIN - 5-1/2" | 2 | | 2 | 2 |
| 6-6 | 30288427 | • PIN, PISTON | 1 | | | |
| 6-7 | NSS | • PISTON - 5-1/2" | 1 | | | |
| 6-8 | 30288450 | RING, LOCK | 2 | | | |
| 6-9 | 32194144 | SET, RING - 5-1/2" | 2 | 2 | 2 | 4 |

FIGURE 7. INTERCOOLER & SHROUD ASSEMBLY.



| REF. NO. | PART NO. | DESCRIPTION | QTY. | SPARES | | |
|-------------|----------|--|------|--------|---|---|
| | | | | 1 | 2 | 3 |
| 7-1 | 95053070 | CAPSCREW, HEX HEAD - 1/4-20 X 1/2" | 5 | | | |
| 7-2 | 95043196 | LOCKWASHER, SPRING - 1/4" | 5 | | | |
| 7-3 | 95094298 | WASHER, FLAT - 1/4" | 5 | | | |
| 7-4 | 32177693 | SHROUD, INTERCOOLER | 1 | | | |
| 7-5 | 32180713 | TOP, SHROUD | 1 | | | |
| 7-6 | 95077764 | NUT, HEX - 3/8-16 | 2 | | | |
| 7-7 | 95081857 | LOCKWASHER, SPRING - 3/8" | 14 | | | |
| 7-8 | 95069597 | WASHER, FLAT - 3/8" | 2 | | | |
| 7-9 | 95002895 | CAPSCREW, HEX HEAD - 3/8-16 X 4" | 2 | | | |
| 7-10 | 32175515 | BRACKET, INTERCOOLER | 1 | | | |
| 7-11 | 32165367 | CLAMP, INTERCOOLER TUBE - OUTER | 2 | | | |
| 7-12 | 32165383 | CLAMP, INTERCOOLER TUBE - CENTER | 1 | | | |
| 7-13 | 95370888 | TIE, CABLE | 2 | | | |
| 7-14 | 32197006 | ASSEMBLY, INTERCOOLER TUBE - FINNED - #3 | 1 | | 1 | 2 |
| 7-15 | 32196990 | ASSEMBLY, INTERCOOLER TUBE - FINNED - #2 | 1 | | 1 | 2 |
| 7-16 | 32196982 | ASSEMBLY, INTERCOOLER TUBE - FINNED - #1 | 1 | | 1 | 2 |
| 7-17 | 32196974 | ASSEMBLY, INTERCOOLER TUBE - FINNED - #3 | 1 | | 1 | 2 |
| 7-18 | 32196966 | ASSEMBLY, INTERCOOLER TUBE - FINNED - #2 | 1 | | 1 | 2 |
| 7-19 | 32196958 | ASSEMBLY, INTERCOOLER TUBE - FINNED - #1 | 1 | | 1 | 2 |
| 7-20 | 95083226 | CONNECTOR, MALE - 5/8 X 1/2" | 12 | | | |
| 7-21 | 72062185 | VALVE, RELIEF - 80 PSIG | 2 | | | 2 |
| 7-22 | 95079612 | CAPSCREW, HEX HEAD - 3/8-16 X 1" | 27 | | | |
| 7-23 | 95081857 | LOCKWASHER, SPRING - 3/8" | 15 | | | |
| 7-24 | 32180697 | FLANGE, INTERCOOLER - HIGH PRESSURE | 1 | | | |
| 7-25 | 32160566 | GASKET, FLANGE - HIGH PRESSURE | 1 | 1 | 1 | 2 |
| 7-26 | 32160475 | FLANGE, INTERCOOLER - LOW PRESSURE | 2 | | | |
| 7-27 | 32160558 | GASKET, FLANGE - LOW PRESSURE | 2 | 2 | 2 | 4 |
| 7-28 | 32160491 | MANIFOLD, INTERCOOLER - #1 LOW PRESSURE | 1 | | | |
| 7-29 | 32160509 | MANIFOLD, INTERCOOLER - #2 LOW PRESSURE | 1 | | | |
| 7-30 | 32153801 | GASKET, MANIFOLD - LOW PRESSURE | 2 | 2 | 2 | 4 |
| 7-31 | 32164519 | MANIFOLD, INTERCOOLER - HIGH PRESSURE | 1 | | | |
| 7-32 | 32153827 | GASKET, MANIFOLD - HIGH PRESSURE | 1 | 1 | 1 | 2 |

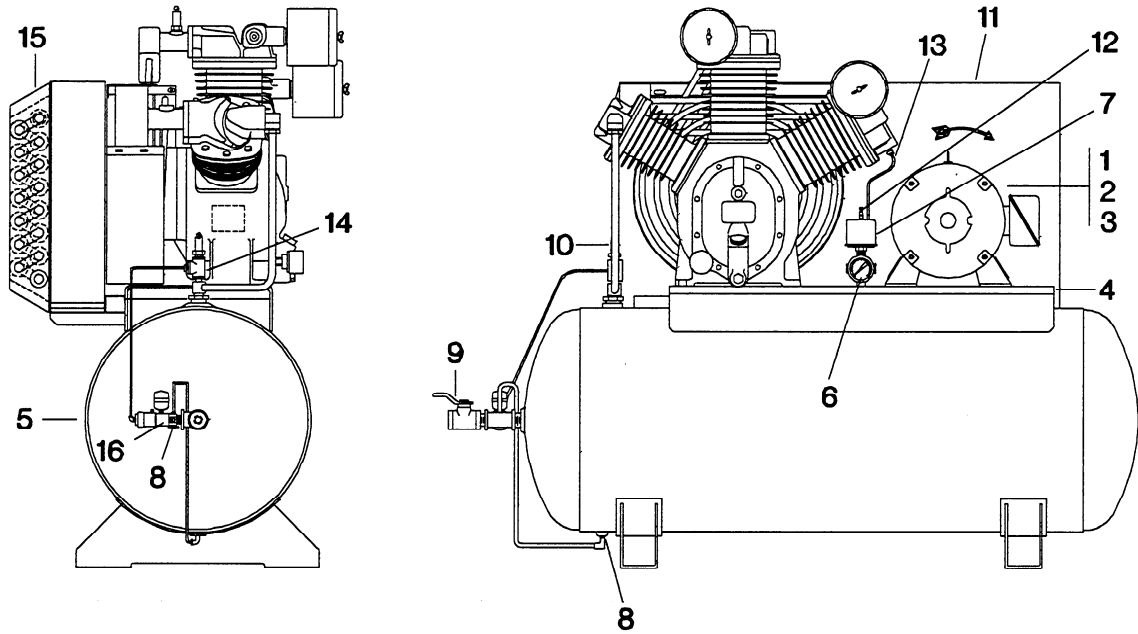
FIGURE 8. TYPICAL BASEPLATE PACKAGE.



| REF. NO. | PART NO. | DESCRIPTION | QTY. | SPARES | | |
|---------------------------|----------|--|------|--------|---|---|
| | | | | 1 | 2 | 3 |
| 8-1 | ** | MOTOR, ELECTRIC | 1 | | | |
| 8-2 | ** | PULLEY, MOTOR | 1 | | | |
| 8-3 | ** | BELT | 2 | | 2 | 2 |
| 8-4 | 32203150 | TIGHTENER, BELT - COMPLETE | 1 | | | |
| 8-5 | 32123689 | ASSEMBLY, SUBBASE | 1 | | | |
| 8-6 | 32252470 | BELTGUARD, COMPLETE (FOR UNITS WITHOUT AFTERCOOLER)* | 1 | | | |
| NI | 32170797 | VALVE, AUXILIARY - DUAL CONTROL - 175 PSIG | 1 | | | |
| NI | 32170789 | VALVE, AUXILIARY - DUAL CONTROL - 125 PSIG - TEMPERATURE CONTROL UNITS | 1 | | | |
| NI | 37005907 | SWITCH, PRESSURE - NEMA 1 | 1 | 1 | 1 | 1 |
| NI | 32061368 | SWITCH, PRESSURE - NEMA 1 - TEMPERATURE CONTROL UNITS | 1 | 1 | 1 | 1 |
| OPTIONAL EQUIPMENT | | | | | | |
| 8-7 | REF. | AFTERCOOLER, AIR COOLED (SEE FIGURE 11) | 1 | | | |

* FOR UNITS WITH AFTERCOOLER, SEE FIGURE 11.

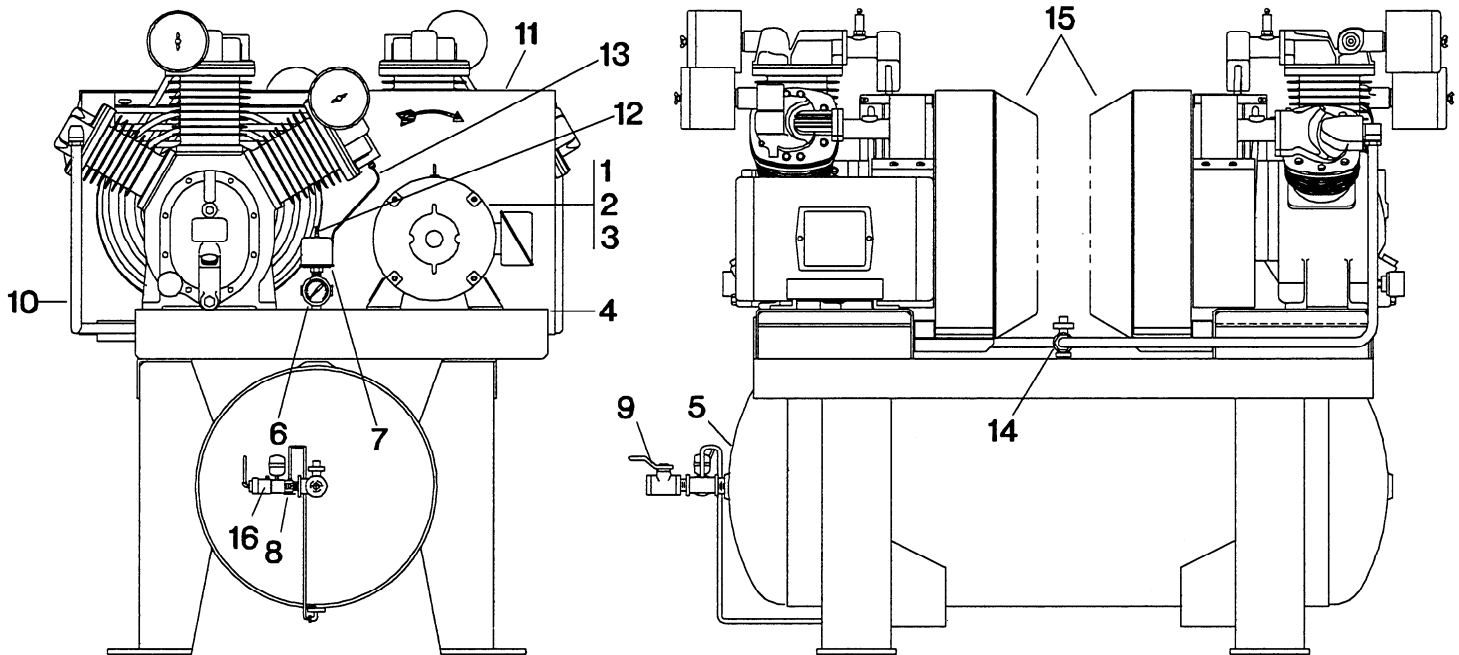
FIGURE 9. TYPICAL SIMPLEX PACKAGE.



| REF. NO. | PART NO. | DESCRIPTION | QTY. | SPARES | | |
|---------------------------|----------|--|------|--------|---|---|
| | | | | 1 | 2 | 3 |
| 9-1 | ** | MOTOR, ELECTRIC | 1 | | | |
| 9-2 | ** | PULLEY, MOTOR | 1 | | | |
| 9-3 | ** | BELT | 2 | | 2 | 2 |
| 9-4 | 32203150 | TIGHTENER, BELT - COMPLETE | 1 | | | |
| 9-5 | 32198632 | ASSEMBLY, RECEIVER - 120 GALLON | 1 | | | |
| 9-5 | 32185126 | ASSEMBLY, RECEIVER - 120 GALLON (TEMPERATURE CONTROL) | 1 | | | |
| 9-5 | 32198558 | ASSEMBLY, RECEIVER - 240 GALLON | 1 | | | |
| NI | 31385693 | VALVE, RELIEF - 200 PSIG - RECEIVER | 1 | | | 1 |
| NI | 30812101 | VALVE, RELIEF - 110 PSIG - RECEIVER (TEMPERATURE CONTROL) | 1 | | | 1 |
| 9-6 | 32013872 | GAUGE, PRESSURE - 300 PSIG | 1 | 1 | 1 | 1 |
| 9-7 | 37005907 | SWITCH, PRESSURE - NEMA 1 | 1 | 1 | 1 | 1 |
| 9-7 | 32061368 | SWITCH, PRESSURE - NEMA 1 (TEMPERATURE CONTROL) | 1 | 1 | 1 | 1 |
| 9-8 | 32027120 | VALVE, MANUAL DRAIN | 1 | | | |
| 9-9 | 32223604 | VALVE, BALL - SERVICE | 1 | | | 1 |
| 9-10 | 32188542 | ASSEMBLY, TUBE - COMPRESSOR/120 GALLON RECEIVER | 1 | | | |
| 9-10 | 32190480 | ASSEMBLY, TUBE - COMPRESSOR/240 GALLON RECEIVER | 1 | | | |
| 9-11 | 32318305 | BELTGUARD, COMPLETE (FOR 120 GAL. RECEIVER UNITS WITHOUT AFTERCOOLER)* | 1 | | | |
| 9-11 | 32252470 | BELTGUARD, COMPLETE (FOR 240 GAL. RECEIVER UNITS WITHOUT AFTERCOOLER)* | 1 | | | |
| 9-12 | 32170797 | VALVE, AUXILIARY - DUAL CONTROL - 175 PSIG | 1 | | | |
| 9-12 | 32170789 | VALVE, AUXILIARY - DUAL CONTROL - 125 PSIG (TEMPERATURE CONTROL) | 1 | | | |
| 9-13 | 32229510 | ASSEMBLY, TUBE - AUXILIARY VALVE/UNLOADER | 1 | | | |
| 9-14 | 32174286 | VALVE, RELIEF - 325 PSIG - DISCHARGE | 1 | | 1 | 1 |
| OPTIONAL EQUIPMENT | | | | | | |
| 9-15 | REF. | AFTERCOOLER, AIR COOLED (SEE FIGURE 11) | 1 | | | |
| 9-16 | 32310690 | VALVE, AUTOMATIC DRAIN | 1 | | | |

* FOR UNITS WITH AFTERCOOLER, SEE FIGURE 11.

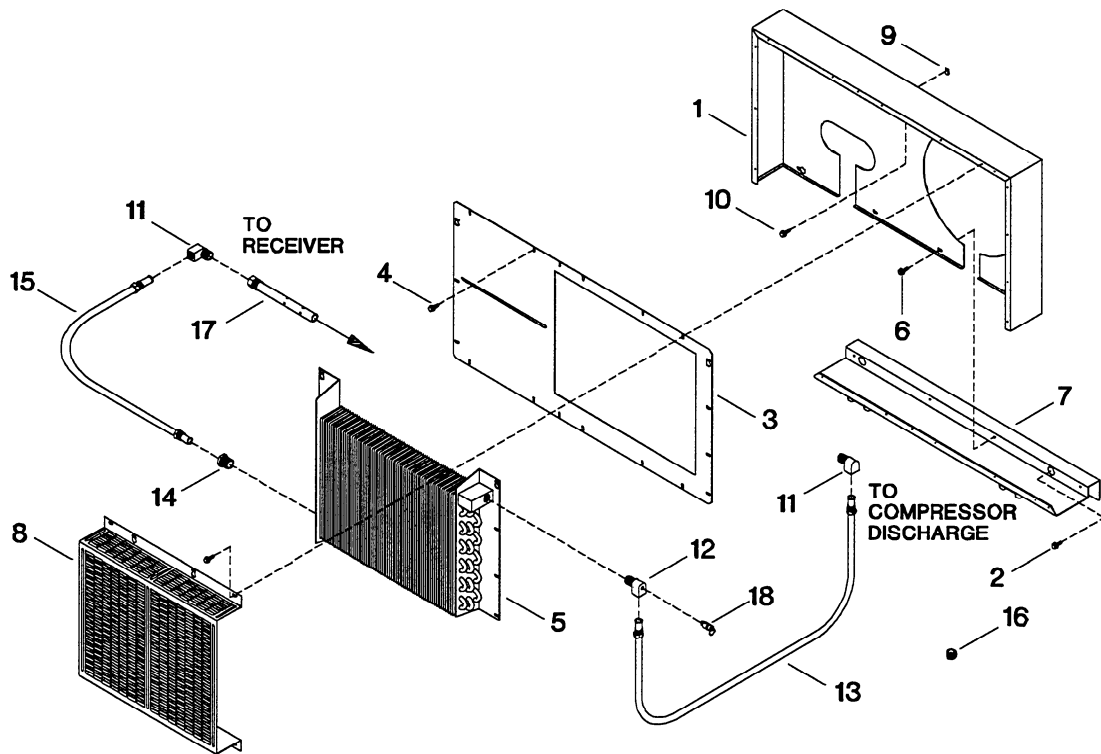
FIGURE 10. TYPICAL DUPLEX PACKAGE.



| REF. NO. | PART NO. | DESCRIPTION | QTY. | SPARES | | |
|---------------------------|----------|--|------|--------|---|---|
| | | | | 1 | 2 | 3 |
| 10-1 | ** | MOTOR, ELECTRIC | 2 | | | |
| 10-2 | ** | PULLEY, MOTOR | 2 | | | |
| 10-3 | ** | BELT | 4 | | 4 | 4 |
| 10-4 | 32203150 | TIGHTENER, BELT - COMPLETE | 2 | | | |
| 10-5 | 32233249 | ASSEMBLY, RECEIVER - 240 GALLON | 1 | | | |
| NI | 30357917 | VALVE, RELIEF - 200 PSIG - RECEIVER | 1 | | | 1 |
| NI | 30357875 | VALVE, RELIEF - 135 PSIG - RECEIVER (TEMPERATURE CONTROL) | 1 | | | 1 |
| 10-6 | 32013872 | GAUGE, PRESSURE - 300 PSIG | 1 | 1 | 1 | 1 |
| 10-7 | 37005907 | SWITCH, PRESSURE - NEMA 1 | 2 | 2 | 2 | 2 |
| 10-7 | 32061368 | SWITCH, PRESSURE - NEMA 1 (TEMPERATURE CONTROL) | 2 | 2 | 2 | 2 |
| 10-8 | 32027120 | VALVE, MANUAL DRAIN | 1 | | | |
| 10-9 | 32202657 | VALVE, BALL - SERVICE | 1 | | | 1 |
| 10-10 | 32188542 | ASSEMBLY, TUBE - COMPRESSOR/120 GALLON RECEIVER | 1 | | | |
| 10-10 | 32190480 | ASSEMBLY, TUBE - COMPRESSOR/240 GALLON RECEIVER | 1 | | | |
| 10-11 | 32252470 | BELTGUARD - COMPLETE (FOR UNITS WITHOUT AFTERCOOLER)* | 1 | | | |
| 10-12 | 32170797 | VALVE, AUXILIARY - DUAL CONTROL - 175 PSIG | 1 | | | |
| 10-12 | 32170789 | VALVE, AUXILIARY - DUAL CONTROL - 125 PSIG (TEMPERATURE CONTROL) | 1 | | | |
| 10-13 | 32233454 | ASSEMBLY, TUBE - AUXILIARY VALVE/UNLOADER | 1 | | | |
| 10-14 | 32223604 | VALVE, BALL - 1" | 2 | | | 2 |
| NI | 32174286 | VALVE, RELIEF - 325 PSIG - DISCHARGE | 1 | | 1 | 1 |
| OPTIONAL EQUIPMENT | | | | | | |
| 10-15 | REF. | AFTERCOOLER, AIR COOLED (SEE FIGURE 11) | 1 | | | |
| 10-16 | 32310690 | VALVE, AUTOMATIC DRAIN | 1 | | | |

* FOR UNITS WITH AFTERCOOLER, SEE FIGURE 11.

FIGURE 11. TYPICAL AIR COOLED AFTERCOOLER.



| REF. NO. | PART NO. | DESCRIPTION | QTY. | | | |
|----------|----------|--|------------|------------------|------------------|-----------------|
| | | | BASE PLATE | 120 GAL. SIMPLEX | 240 GAL. SIMPLEX | 240 GAL. DUPLEX |
| 11-1 | 32250508 | BACK, BELTGUARD | 1 | - | 1 | 2 |
| 11-1 | 32499022 | BACK, BELTGUARD | - | 1 | - | - |
| 11-2 | 32000705 | SCREW, TAPPING - 3/8-16 X 3/4" | 4 | 4 | 4 | 8 |
| 11-3 | 32250060 | COVER, BELTGUARD | 1 | - | 1 | 2 |
| 11-3 | 32499055 | COVER, BELTGUARD | - | 1 | - | - |
| 11-4 | 32187056 | SCREW, SELF-DRILLING - 1/4" | 21 | 21 | 21 | 42 |
| 11-5 | 32245037 | COIL, AIR COOLED AFTERCOOLER | 1 | 1 | 1 | 2 |
| 11-6 | 97170849 | SCREW, SELF-TAPPING - 5/16 X 3/4" | 4 | 4 | 4 | 8 |
| 11-7 | 32252462 | SUPPORT, BELTGUARD | 1 | - | 1 | 2 |
| 11-7 | 32499030 | SUPPORT, BELTGUARD | - | 1 | - | - |
| 11-8 | 32250334 | COVER, AIR COOLED AFTERCOOLER | 1 | - | 1 | 2 |
| 11-8 | 32499063 | COVER, AIR COOLED AFTERCOOLER | - | 1 | - | - |
| 11-9 | 32136939 | NUT, SPEED | 2 | 2 | 2 | 4 |
| 11-10 | 32164634 | CAPSCREW, SERRATED - 5/16 X 3/4" | 2 | 2 | 2 | 4 |
| 11-11 | 95229183 | ELBOW, TUBE - 1 X 1" | 2 | 2 | 2 | 2 |
| 11-12 | 32145096 | ELBOW, TUBE - 1 X 1" | 1 | 1 | 1 | 2 |
| 11-13 | 32188559 | ASSEMBLY, TUBE - COMPRESSOR/AIR COOLED AFTERCOOLER | 1 | 1 | 1 | 2 |
| 11-14 | 95229308 | CONNECTOR, MALE - 1 X 1" | - | 1 | 1 | 4 |
| 11-15 | 32252884 | ASSEMBLY, TUBE - AIR COOLED AFTERCOOLER/RECEIVER | - | 1 | - | - |
| 11-15 | 32252876 | ASSEMBLY, TUBE - AIR COOLED AFTERCOOLER/RECEIVER | - | - | 1 | - |
| 11-15 | 32252868 | ASSEMBLY, TUBE - AIR COOLED AFTERCOOLER/RECEIVER | - | - | - | 2 |
| 11-16 | 32215774 | PLUG - 1-1/4" SQUARE COUNTERSUNK | - | 1 | 1 | - |
| 11-17 | 30218382 | SILENCER, NOISE | - | 1 | 1 | - |
| 11-18 | 32174286 | VALVE, RELIEF - DISCHARGE - 325 PSIG | 1 | 1 | 1 | 1 |

COMPRESSOR LUBRICANT

| PART NO. | DESCRIPTION |
|----------|---|
| 32318875 | LUBRICANT, ALL SEASON T30 SELECT™ SYNTHETIC LUBRICANT (QT.) |
| 32318883 | LUBRICANT, ALL SEASON T30 SELECT™ SYNTHETIC (12 QT. CASE) |

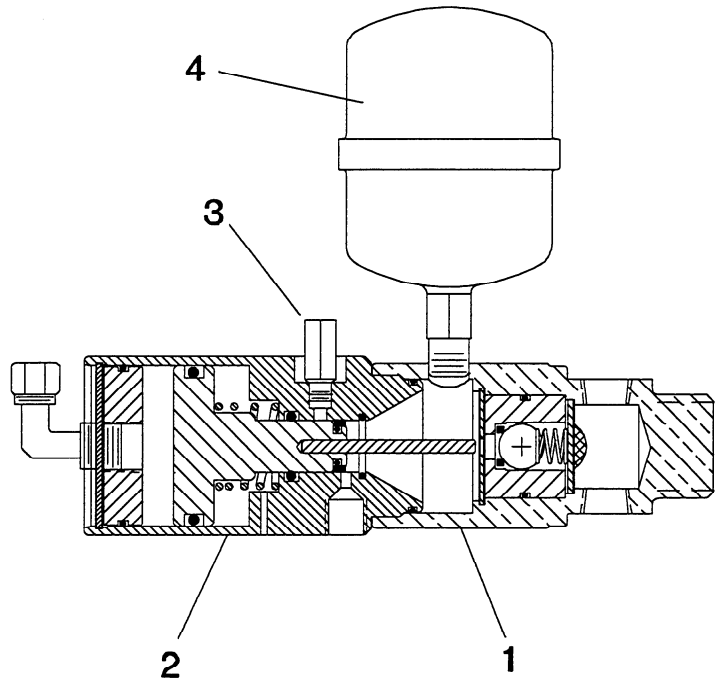
STEP SAVER KITS

| PART NO. | DESCRIPTION |
|----------|-----------------------------|
| 32127482 | KIT, FILTER/SILENCER |
| 32229379 | KIT, VALVE/GASKET |
| 32194003 | KIT, RING/GASKET |
| 32127516 | KIT, BEARING/CONNECTING ROD |
| 32229387 | KIT, GASKET |
| 32212649 | KIT, DECAL |
| 32319493 | KIT, OVERHAUL |

AUTOMATIC DRAIN VALVE KITS & REPLACEMENT PARTS

| REF. NO. | PART NO. | DESCRIPTION |
|----------|----------|---------------------------------------|
| 12-1 | 32310971 | KIT, WATER CAP ASSEMBLY |
| 12-2 | 32310989 | KIT, BODY/PISTON ASSEMBLY |
| 12-3 | 32310997 | KIT, ONE WAY VALVE |
| 12-4 | 32496309 | RESERVOIR, LARGE (FOR DUPLEX MODELS) |
| 12-4 | 32496317 | RESERVOIR, SMALL (FOR SIMPLEX MODELS) |

FIGURE 12. TYPICAL AUTOMATIC DRAIN VALVE (CUTAWAY VIEW).





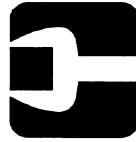
A series of horizontal lines for writing, spanning the width of the page. The lines are evenly spaced and extend from the left margin to the right margin.

LOOK WHAT INGERSOLL-RAND CAN DO FOR YOU!



Efficient Field Service

We maintain a highly trained staff of technicians to service your equipment for preventive maintenance, or to assist you should emergencies ever occur.



Complete Repair Service

Our trained technicians will repair or overhaul your equipment to factory specifications, using only genuine I-R parts.



Special Engineering Service

We can help you identify and solve your problems by evaluating your needs and recommending the proper equipment to give you maximum efficiency.



Spare Parts

By stocking genuine I-R spare parts, we can help you avoid costly delays or substituting inferior parts. Using genuine I-R parts on your I-R equipment will help to keep even older equipment running in good-as-new condition.



Complete Stock of Equipment

We carry a complete line of I-R equipment and accessories designed to meet any compressed air application. We are backed by I-R's prompt factory shipment to ensure you on-time delivery.

A SUBSTITUTE IS NOT A REPLACEMENT!

Ensure you get peak performance and longevity out of your Ingersoll-Rand product by insisting on genuine Ingersoll-Rand replacement parts and maintenance kits. Not only are the replacement parts made to precise dimensions and OEM-specified metallurgy, but each part is backed by the Ingersoll-Rand warranty. Your local Air Center, Distributor, or direct Ingersoll-Rand salesperson will work with you to ensure you get the parts you need to do the job right. Equip your machines with only the best — Ingersoll-Rand genuine parts.

NOTE: THE USE OF REPAIR PARTS OTHER THAN THOSE INCLUDED WITHIN THE INGERSOLL-RAND COMPANY APPROVED PARTS LIST MAY CREATE UNSAFE CONDITIONS OR MECHANICAL FAILURES OVER WHICH INGERSOLL-RAND COMPANY HAS NO CONTROL. INGERSOLL-RAND COMPANY SHALL BEAR NO RESPONSIBILITY FOR EQUIPMENT ON WHICH NON-APPROVED REPAIR PARTS ARE INSTALLED.

The manufacturer reserves the right to make changes or add improvements without notice and without incurring any obligation to make such changes to products previously sold.