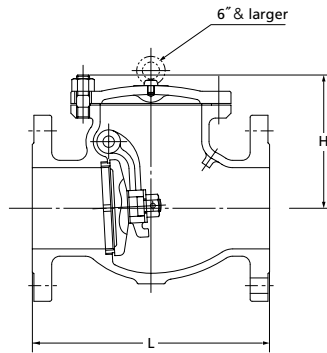


Class 150 Swing Check Valve

150SRB
B.C.
RF-flanged



F-F dimension : ASME B16.10
End flanges : ASME B16.5

−5°C ~ +38°C W.O.G. 1.73MPa
149°C W.O.G. 1.48MPa
260°C W.O.G. 1.18MPa
343°C W.O.G. 0.86MPa

- Use for lubricating or hydraulic oil is acceptable.
- Bolting materials will be changed for servicing high temperature exceeding 225°C . Contact KITZ Corporation for detailed information.
- A gasket will be used for sealing the plug for application to high temperature exceeding 260 °C . Specify your service temperature in advance. Ensure replacement of plug gaskets on your valve maintenance.

Materials

Parts	JIS material
Body	FCD-5
Cover	FCD-5
Disc	SUS403 (8"~12": SCPH2 + 13Cr)
Disc nut	SS400 (5"~12": SUS304)
Split pin	SUS304
Hinge pin	SUS403
Plug	SS400
Gasket	Non Asbestos Sheet
Body seat ring	SUS403
Arm	SCS13A (5"~12": SFVC2A)
Cover bolt / nut	Carbon Steel

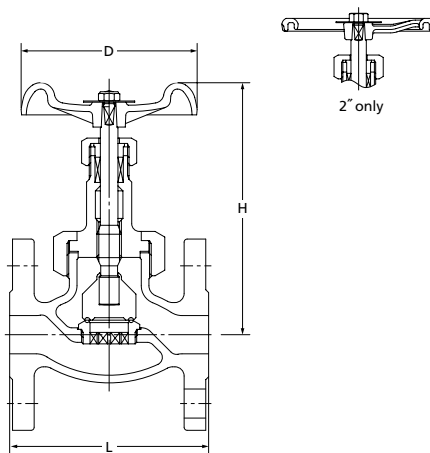
Dimensions

Size	mm										
	mm	40	50	65	80	100	125	150	200	250	300
	inch	1½	2	2½	3	4	5	6	8	10	12
L		165	203	216	241	292	330	356	495	622	698
H		115	120	130	145	165	200	220	260	320	360

NOTE : For flange dimensions refer to Page 41

Class 300 Globe Valve

300SYB
U.B.I.S.
RF-flanged



F-F dimension : JIS B 2002 JV 4-4
End flanges : ASME B16.5

−5°C ~ +38°C W.O.G. 2.94MPa
149°C W.O.G. 2.60MPa
260°C W.O.G. 2.28MPa
350°C W.O.G. 2.04MPa

- Use for lubricating or hydraulic oil is acceptable.
- Employment of copper gasket prohibits use of this valve for ammonia or amine chemicals.

Materials

Parts	JIS material
Body	FCD-5
Bonnet	FCD-5
Stem	SUS420J2
Disc	SUS403 + HF *
Gland	SUS403 (½": SUS420J2)
Gland packing	Non Asbestos Packing
Handwheel	FCD450-10 (2": FCD400)
Gasket	C1100P-0
Body seat ring	SCS13A + HF *

* Hard-faced with Co-Cr-W alloy

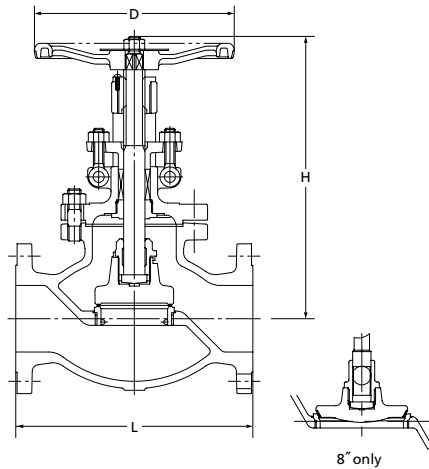
Dimensions

Size	mm						
	mm	15	20	25	32	40	50
	inch	½	¾	1	1¼	1½	2
L		110	120	130	160	180	230
H (open)		138	157	178	202	210	239
D		80	100	115	135	135	180

NOTE : For flange dimensions refer to Page 41

Class 300 Globe Valve

300SYBO
B.B.O.S.Y.
RF-flanged



F-F dimension : ASME B16.10
End flanges : ASME B16.5

-5°C ~ +38°C W.O.G. 2.94MPa
149°C W.O.G. 2.60MPa
260°C W.O.G. 2.28MPa
350°C W.O.G. 2.04MPa

● Use for lubricating or hydraulic oil is acceptable.

Materials

Parts	JIS material
Body	FCD-S
Bonnet	FCD-S
Stem	SUS403
Disc	SFVC2A + HF *
Gland	FCD-S
Gland packing	Non Asbestos Packing
Handwheel	FCD400
Gasket	Non Asbestos Sheet
Body seat ring	SFVC2A + HF *
Yoke bush	C6782BE

* Hard-faced with Co-Cr-W alloy

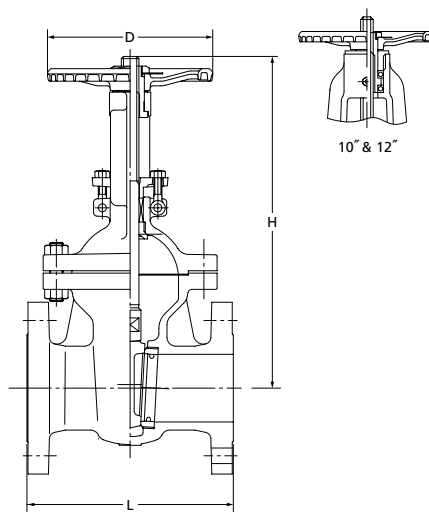
Dimensions

Size	mm							
	50	65	80	100	125	150	200	
	inch	2	2½	3	4	5	6	8
L		267	292	318	356	400	444	559
H (open)		243	347	382	457	534	593	697
D		225	250	250	300	350	400	560

NOTE : For flange dimensions refer to Page 41.

Class 300 Gate Valve

300SLBO
B.B.O.S.Y.
RF-flanged



F-F dimension : ASME B16.10
End flanges : ASME B16.5

-5°C ~ +38°C W.O.G. 2.94MPa
149°C W.O.G. 2.60MPa
260°C W.O.G. 2.28MPa
350°C W.O.G. 2.04MPa

● Use for lubricating or hydraulic oil is acceptable.

Materials

Parts	JIS material
Body	FCD-S
Bonnet	FCD-S
Stem	SUS403
Disc	SUS403 (8"~12" : SCPH2 + 13Cr)
Gland	FCD-S
Gland packing	Non Asbestos Packing
Handwheel	FCD400
Body seat ring	SUS403
Yoke sleeve	C6782BE (6"~12" : HBSc2)
Gasket	Non Asbestos Sheet
Bonnet bolt / nut	Carbon Steel

Dimensions

Size	mm									
	50	65	80	100	125	150	200	250	300	
	inch	2	2½	3	4	5	6	8	10	12
L		216	241	283	305	381	403	419	457	502
H (open)		395	450	520	595	725	820	1070	1247	1451
D		200	200	250	250	300	350	400	450	500

NOTE : For flange dimensions refer to Page 41.