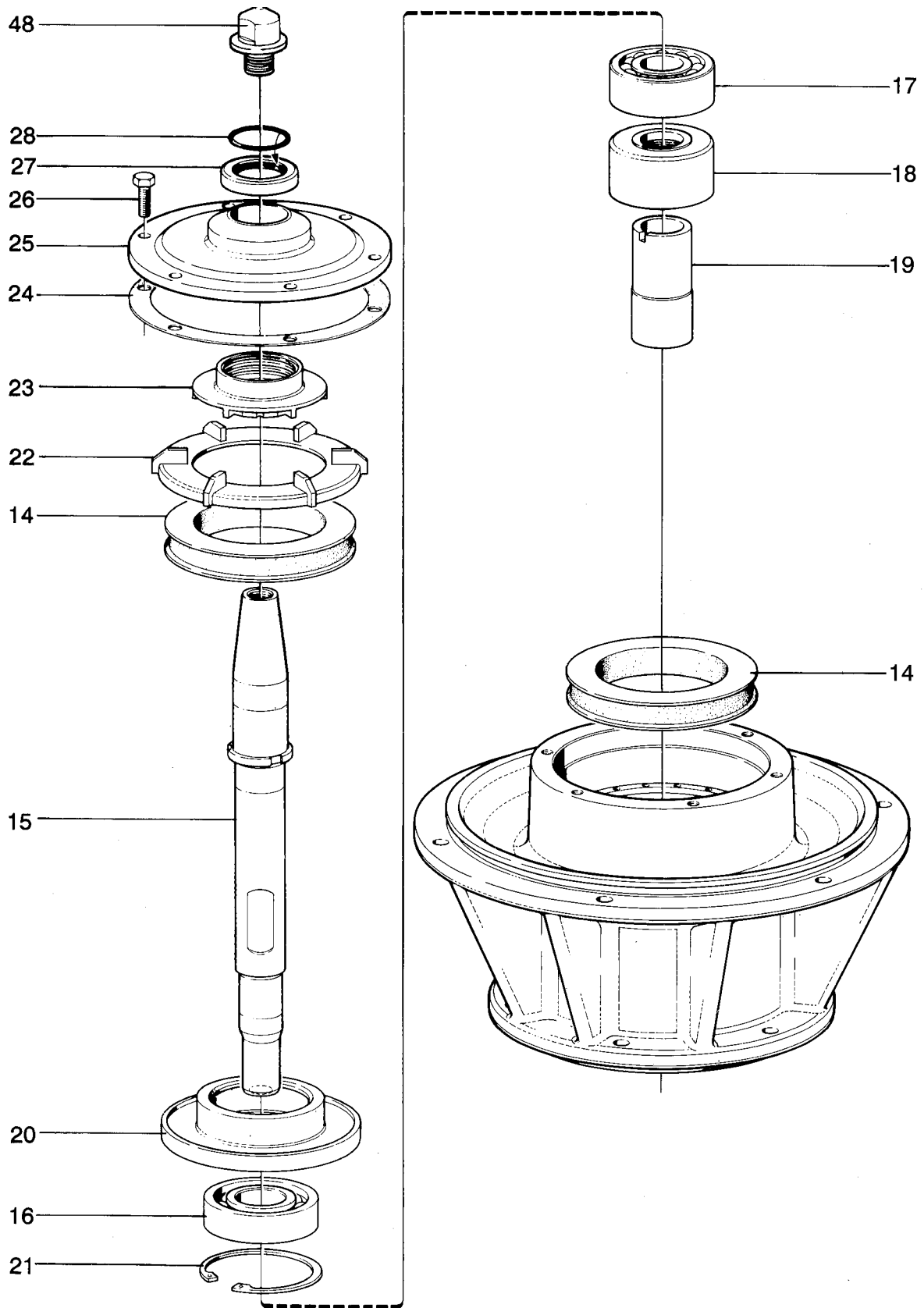


C-00638-0-6



C-00639-0-3

Machine type	Machine unit description	Page 030-1A
MMB 304S-11	Machine bottom part	Fig. ref C-00638-0-6 +
	Subassembly description	Date 94-10

Ref.	Part No	Description	Machine unit No or Subassembly description / Qty							Notes
			548040 -							
			- 01	- 02	- 05					
-	-	For motor 50 Hz.....	↓							
-	-	For motor 60 Hz.....		↓						
-	-	For motor 60 Hz NEMA std.....			↓					
1	548010 03	Frame bottom part	1	1	1					
2	545892 01	Frame foot	4	4	4					
3	223107 35	Spring washer.....	4	4	4					
4	221045 29	Screw.....	4	4	4					
5	554476 80	Cover with belt guide	1	1	1					
6	548152 03	Washer	2	2	2					
7	221040 05	Screw.....	2	2	2					
8	545831 80	Oil filling device.....	1	1	1	--	--	--	--	See page 030-1.1
9	548012 02	Frame intermediate part	1	1	1					
10	223412 38	O-ring.....	1	1	1					
11	223412 49	O-ring.....	1	1	1					
12	548152 03	Washer	6	6	6					
13	221040 05	Screw.....	6	6	6					
14	543619 80	Rubber buffer.....	2	2	2					
15	546606 01	Bowl spindle	1	1	1					
16	548051 05	Ball bearing.....	1	1	1					
17	37535	Ball bearing.....	1	1	1					
18	545601 80	Oil pump	1	1	1					
19	545596 01	Belt pulley	1	1	1					
20	543609 02	Ball bearing holder.....	1	1	1					
21	223642 36	Snap ring	1	1	1					
22	545620 02	Buffer holder	1	1	1					
23	544203 02	Fan	1	1	1					
24	543612 01	Gasket.....	1	1	1					
25	543613 02	Top bearing cover.....	1	1	1					
26	221035 02	Screw.....	6	6	6					
27	544337 02	Deflector ring	1	1	1					
28	223406 29	O-ring.....	1	1	1					
29	545782 02	Motor adapter	1	1	*	--	--	--	--	*/ See page 031-1
30	545856 80	Belt tightener	1	1	*	--	--	--	--	See page 030-1.2
31	548152 03	Washer	4	4						
32	221040 52	Screw.....	4	4	*					
33	544575 85	Friction coupling	1	--	--	--	--	--	--	See page 030-1.3
33	544575 86	Friction coupling	--	1	*	--	--	--	--	See page 030-1.3
34	543669 01	Washer	1	1	*					
35	70915	Spring washer.....	1	1	*					
36	221035 08	Screw.....	1	1	*					
37	548152 03	Washer	4	4	*					
38	221040 05	Screw.....	4	4	*					
39	260169 22	Flat belt.....	1	--	--	--	--	--	--	50 Hz
39	260169 23	Flat belt.....	--	1	*	--	--	--	--	60 Hz
40	547645 02	Frame top part	1	1	1					
41	548152 03	Washer	6	6	6					
42	221040 05	Screw.....	6	6	6					
43	547992 01	Packing.....	1	1	1					
44	549322 02	Sludge bend	1	1	1					
45	548152 03	Washer	4	4	4					