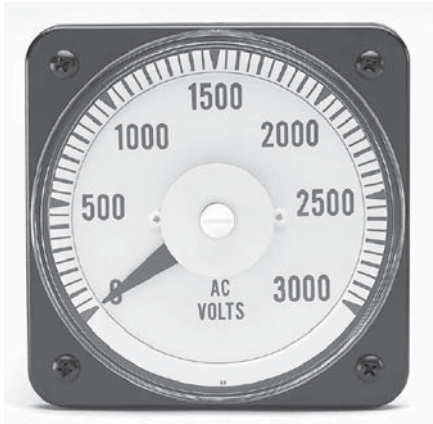


SWITCHBOARD INSTRUMENTS



**AB-40
Metal Case**



**AB-40
Expanded Scale**

AC Voltmeters

Rating (Volts)	Scale (Volts)	AB-14 Cat. No.	AB-40 Metal Case	AB-40 Plastic Case	AB-16 Cat. No.
Self-Contained, 50/60 Hz					
150	0-150	101 023 PZPZ	103 021 PZPZ	103 021 PZPZ7/P	121 021 PZPZ
250	0-250	101 023 RSRS	103 021 RSRS	103 021 RSRS7/P	121 021 RSRS
300	0-300	101 023 RXRX	103 021 RXRX	103 021 RXRX7/P	121 021 RXRX
500	0-500	101 023 SFSF	103 021 SFSF	103 021 SFSF7/P	121 021 SFSF
600	0-600	101 023 SJSJ	103 021 SJSJ	103 021 SJSJ7/P	121 021 SJSJ
750s	0-750	**	103 021 SMSM	103 021 SMSM7/P	121 021 SMSM
Transformer-Rated, 50/60 Hz					
150	0-300	101 023 PZRX	103 021 PZRX	103 021 PZRX7/P	121 021 PZRX
150	0-600	101 023 PZSJ	103 021 PZSJ	103 021 PZSJ7/P	121 021 PZSJ
150	0-750	101 023 PZSM	103 021 PZSM	103 021 PZSM7/P	121 021 PZSM
150	0-3000	101 023 PZUA	103 021 PZUA	103 021 PZUA7/P	121 021 PZUA
150	0-5250	101 023 PZUL	103 021 PZUL	103 021 PZUL7/P	121 021 PZUL
150	0-6000	101 023 PZUP	103 021 PZUP	103 021 PZUP7/P	121 021 PZUP
150	0-9000	101 023 PZUY	103 021 PZUY	103 021 PZUY7/P	121 021 PZUY
150	0-15kV	101 023 PZWZ	103 021 PZWZ	103 021 PZWZ7/P	121 021 PZWZ
150	0-18kV	101 023 PZXE	103 021 PZXE	103 021 PZXE7/P	121 021 PZXE
150	0-45kV	101 023 PZXU	103 021 PZXU	103 021 PZXU7/P	121 021 PZXU
150	0-150kV	101 023 PZYR	103 021 PZYR	103 021 PZYR7/P	121 021 PZYR
250	0-600V	101 023 RSSJ	103 021 RSSJ	103 021 RSSJ7/P	121 021 RSSJ
Expanded Scale, Self-Contained, 50/60 Hz					
110-130	110-130	**	103 071 PNP	103 071 PNP7/P	121 071 PNP
Expanded Scale, Transformer Rated, 50/60 Hz					
110-130	†	**	103 071 PN . . *	103 071 PN..7/P*	121 071 PN . . *
Rectifier Type, 1.5% Accuracy, 20 to 3000 Hz					
15	0-15	**	103151NDND	103151NDND 71P	121151NDND
30	0-30	**	103151NLNL	103151NLNL 71P	121151NLNL
150	0-150	**	103151PZPZ	103151PZPZ 71P	121151PZPZ
150	†	**	103151PZ*	103151PZ* 71P	121151PZ*
300	0-300	**	103151RXRX	103151RXRX 71P	121151RXRX
600	0-600	**	103151STST	103151STST 71P	121151SJSJ
Ground Detector Type — Single-Phase 50/60 Hz					
150	0-150	**	103 021 PZPZ	103 021 PZPZ7/P	121 021 PZPZ
150	†	**	103 021 PZ . *	103 021 PZ . *7/P	121 021 PZ . *
300	0-300	**	103 021 RXRX	103 021 RXRX7/P	121 021 RXRX
600	0-600	**	103 021 SJSJ	103 021 SJSJ7/P	121 021 SJSJ
Instruction Book: 4555K10P0701, Outline Dimensions: see pages 29 and 32					

sUL version not available.

* Order by description. Specify P.T. (Potential Transformer) ratio if used, and scale desired.

** High shock version not available.

† Scale per requisition. AB/DB models have maximum 4 digits as standard.