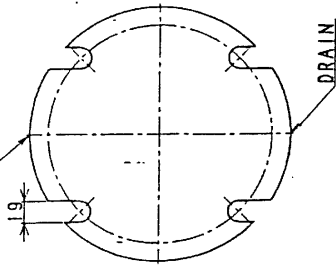
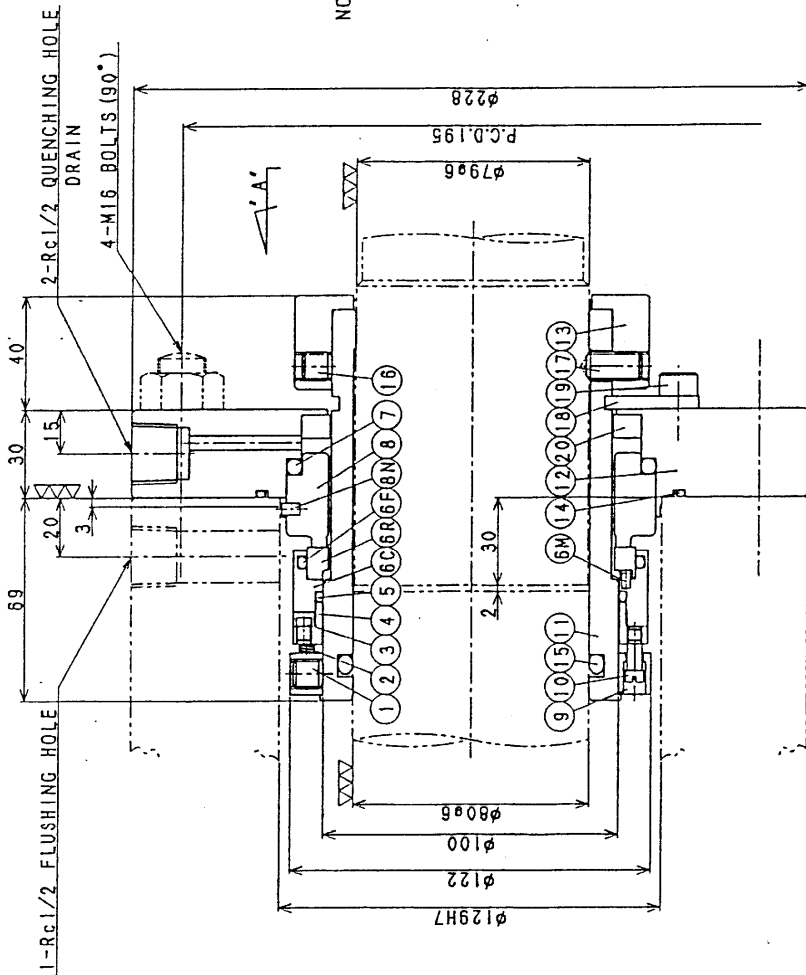


QUENCHING HOLE



ORIENTATION
(VIEW FROM 'A')



NOT SHOWN

NO.	PARTS NAME	QUANTITY	MATERIAL	PARTS NO.
31	PLATE ORIFICE	1	SUS316L	89-475631
30	'Y' TYPE STRAINER	1	SCS16/SUS316L	40MSH. 1/8-ANSI150
20	BUSHING	1	CARBON' B90'	
19	HEX SOCKET BOLTS	4	SUS316	MAX14
18	SET PLATES	2	SUS304	405200-11
17	SET SCREWS	4	ALLOY-20	M10X20
16	SET SCREWS	4	ALLOY-20	M10X10
15	'O' RING	1	YITON	78.8X5.7 J100101 P10
14	'O' RING	1	YITON	138.4X3.1 J100101 P10
13	SET COLLAR	1	SUS316L	
12	GRAND COVER	1	SUS316L	
11	SLEEVE	1	SUS316L	
10	SPRING PINS	4	ALLOY-20	401610-13
9	COLLAR	1	SUS316L	393509-100
8N	PIN	1	ALLOY-20	42-110367 44X8
8	INSERT	1	CARBON' 6A0'	
7	INSERT PACKING	1	YITON	114.8X5.7 J100101 P10
6M	PIN	1	ALLOY-20	42-110367 43X4
6F	'O' RING	1	YITON	110.72X3.53AS500-119
6C	SEAL BACK METAL	1	SUS316L	45-309197-C-100
6R	SEAL FACE	1	YITON	393706-R-100
5	SHAFT PACKING	1	YITON	78.8X5.7 J100101 P10
4	COMP. RING	1	SUS316L	43-109194-100
3	DRIVE PINS	4	ALLOY-20	401603 45X3
2	SPRINGS	20	80 HASTELLOY-C	401702 1.5X17
1	SET SCREWS	3	ALLOY-20	M10X10

PROJECT : WANG KINOH GEOTHERMAL POWER PROJECT
FUJI TANK No. 169011842

DATE	DESCRIPTION	SEALING SPECIFICATION	CAPACITY	SPEED	ROTATION	TEMP	FLOW	YES	NO	APPROVED	CHECKED	DESIGNED	DRAWN	ORIGINAL DRAWING
	LIQUID GEOTHERMAL STEAM CONDENSATE (pH 3.0~7.0)	NOR 2.3.5 (MIN.4, MAX.50) °C	SS 1500	1720 1/2 HR	55	1500	5~10 (MIN.4~50) MPa			M. K. Takahashi	M. K. Takahashi	T. Takahashi	T. Takahashi	13-14727
	TEMP.													
	SP. GR.													
	VISCOSITY	1.0 CP												
	VAPOR PRESS.	11/6MPa												
	SUCT. PRESS.	0.02 MPa												
	DISCH. PRESS.	11/6MPa												
	BOZ. PRESS.	±0.02 MPa												

CUSTOMER	DWM CORPORATION
USER	FUJI ELECTRIC CO., LTD.
NAME	MANDALA NUSANTARA LTD./INDONESIA
DATE	Oct. 21. 1997
TYPE	MECHANICAL SEAL ASSEMBLY
DRAWING NO.	100-B011-Y3
API CODE	T3-25539

TANKEN SEAL SEIKO CO., LTD.