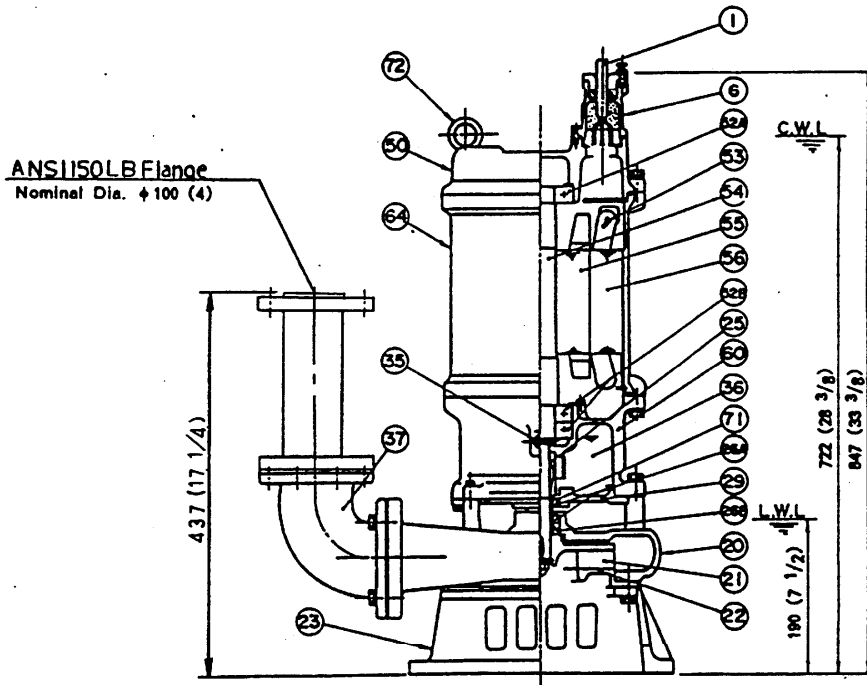
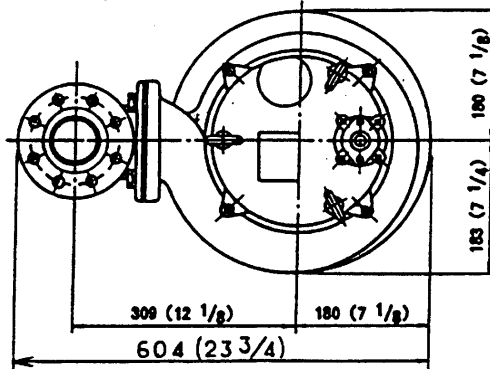


外形・構造図 DIMENSION・SECTIONAL DRAWING

TYPE SUBMERSIBLE STAINLESS-STEEL PUMP MODEL 110-CL2
 名称 水中ケミカルポンプ 型式



9/34

C.W.L. : Continuous Running Water Level
 L.W.L. : Lowest Running Water Level

NO.	DESCRIPTION	Q'TY	MATERIAL / NOTE	NO.	DESCRIPTION	Q'TY	MATERIAL / NOTE
1	Cable	1	Chloroprene Sheath	50	Motor Bracket	1	Stainless Iron Casting SCS14
6	Stuffing Box	1	Stainless Iron Casting SCS14	52A	Upper Bearing	1	#63062ZC3
20	Pump Casing	1	Stainless Iron Casting SCS14	52B	Lower Bearing	1	#6309DDZC3
21	Impeller	1	Stainless Iron Casting SCS14	53	Motor Protector	3	
22	Section Cover	1	Stainless Iron Casting SCS14	54	Shaft	1	Stainless Steel #316
23	Strainer Stand	1	Stainless Iron Casting SCS14	55	Rotor	1	
25	Mechanical Seal	1	X-80X	56	Stator Complete	1	
26A	Oil Seal	2	TC-354511	60	Bearing Housing	1	Stainless Iron Casting SCS14
26B	Labyrinth Ring	1	Stainless Steel #316	64	Motor Frame	1	Stainless Iron Casting SCS14
29	Oil Casing	1	Stainless Iron Casting SCS14	71	Shaft Sleeve	1	Stainless Steel #316
35	Oil Plug	1	Stainless Steel #316	72	Lifting Eye Bolt	3	Stainless Steel #316
36	Lubricant		Turbine Oil (ISO VG32)	99	Discharge Pipe	1	Stainless Steel #316
37	Discharge Band	1	Stainless Iron Casting SCS14		Lifting Chain	1	Stainless Steel #316

株式会社 鶴見製作所

TSURUMI MANUFACTURING CO., LTD.

CHECKED BY
 H. Yamamoto