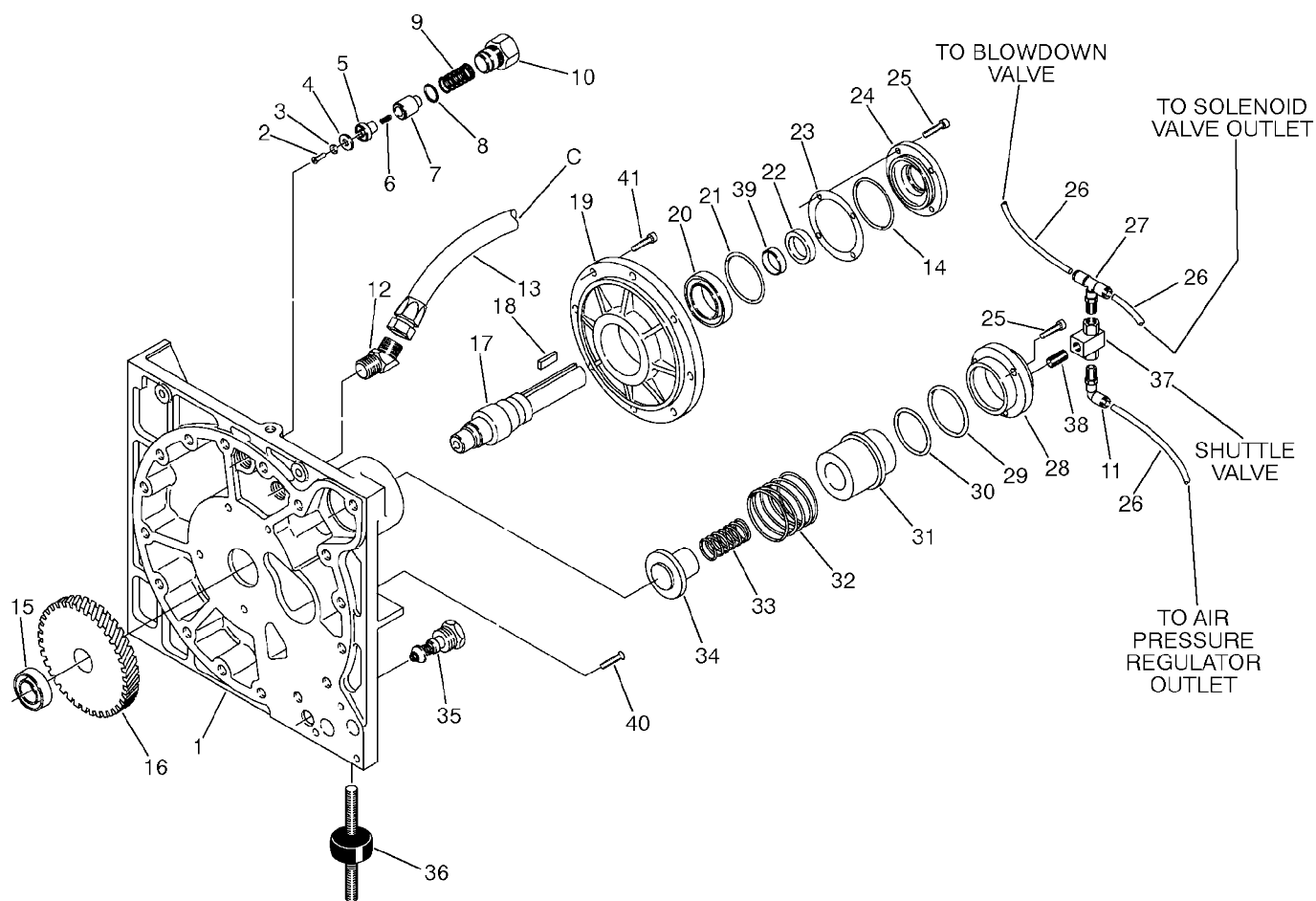


# ILLUSTRATIONS AND PARTS LIST

## 10.3 INLET CONTROL, SEAL/DRIVE GEAR AND PARTS



# ILLUSTRATIONS AND PARTS LIST

## 10.3 INLET CONTROL, SEAL/DRIVE GEAR AND PARTS

<i>key number</i>	<i>description</i>	<i>part number</i>	<i>quantity</i>
1	housing, drive	02250045-827	1
2	screw, flat hd M6 x 12MM	865006-012	1
3	washer	02250048-229	1
4	seat, minimum pressure valve <b>(I)</b>	02250047-162	1
5	stem, minimum pressure valve	02250047-163	1
6	spring, minimum pressure valve <b>(I)</b>	02250047-296	1
7	piston, minimum pressure valve	02250048-908	1
8	o-ring, viton 1 1/4" x 3/32" <b>(I)</b>	826502-124	1
9	spring, minimum pressure valve	02250047-161	1
10	cap, minimum pressure valve	250035-587	1
11	elbow, 90 M 1/4" x 1/4"	250025-850	1
12	elbow, 45 37FL 1.312"	02250046-908	1
13	hose, medium pressure 1" x 11.25"	02250107-919	1
14	o-ring viton 3 1/4" x 3/32" <b>(II)</b>	826502-152	1
15	bearing	499080-206	1
16	gear	consult factory	1
17	shaft, input	02250050-540	1
18	key, 10 x 8 x 70	865210-070	1
19	housing, cover drive	02250055-887	1
20	bearing	499080-210	1
21	o-ring, viton 3 1/4" x 3/32" <b>(II)</b>	826502-152	1
22	seal <b>(II)</b>	02250048-316	1
23	shim, set 3.5 x 3.0	220645	1
24	cover, shaft seal	250035-254	1
25	capscrew, M8 x 20MM	829308-020	7
26	hose, nylon 1/4"	02250054-861	5 ft.
27	tee, swivel 1/4" x 1/4"	250025-835	1
28	cover, inlet control	02250119-254	1
29	o-ring, viton 3 1/8" x 1/8"	826502-235	1
30	o-ring, viton 2" x 1/8"	826502-226	1
31	piston, inlet valve	02250048-909	1
32	spring, inlet piston	250042-087	1

(Continued on page 41)

**(I)** For maintenance on minimum pressure valve, order kit no. 02250050-612 (Note: Items not sold separately).

**(II)** For maintenance on ES-8 shaft seal, order tool kit part numbers 02250061-961 and 001932-005.

**PLEASE NOTE: WHEN ORDERING PARTS, INDICATE SERIAL NUMBER OF COMPRESSOR**