



ROTARY SCREW AIR COMPRESSOR ES-8 Series

Standard and Basic Models

15, 20, 25 and 30 HP

11, 15, 18.5 and 22KW

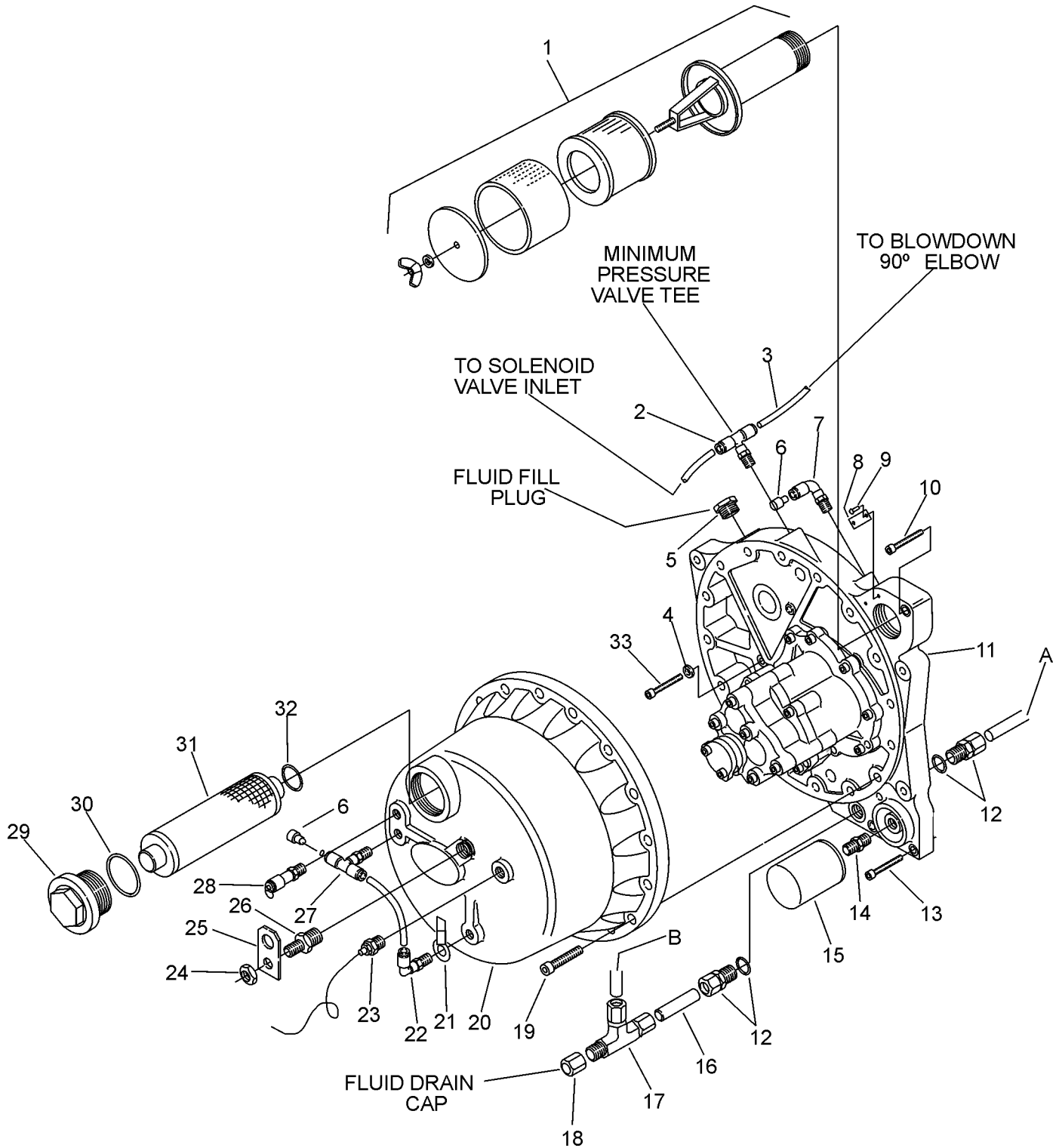
**OPERATOR'S
MANUAL AND
PARTS LIST**

**KEEP FOR
FUTURE
REFERENCE**

Part Number 02250117-368
©Sullair Corporation

ILLUSTRATIONS AND PARTS LIST

10.6 INLET FILTER, COMPRESSOR HOUSING/SUMP AND PARTS- BASIC



ILLUSTRATIONS AND PARTS LIST

10.6 INLET FILTER, COMPRESSOR HOUSING/SUMP AND PARTS- BASIC

<i>key number</i>	<i>description</i>	<i>part number</i>	<i>quantity</i>
1	filter, air (I)	02250069-934	1
2	tee, branch swivel 1/4" T x 1/8" NPT	250025-834	1
3	hose, nylon	842215-004	3
4	washer, 8MM	865408-170	3
5	plug, oil fill hex	250039-359	1
6	plug, push-lok 1/4" tube	02250052-477	2
7	elbow, 90_ 1/8" NPT x 1/4" T	250025-849	1
8	plate, identification	250026-859	1
9	screw, drive #8 x 3/8"	839608-060	2
10	capscrew, socket M16 x 70MM	829316-070	1
11	housing, inlet plate	02250055-933	1
12	connector, tube 3/4"	02250048-819	2
13	capscrew, socket M16 x 60MM	829316-060	2
14	adapter, oil filter	250025-914	1
15	element, fluid filter (II)	250026-982	1
16	tube, oil drain extension	02250046-999	1
17	tee, tube 3/4"	811412-075	1
18	cap, tube 3/4"	250042-615	1
19	capscrew, M16 x 100MM	829316-100	16
20	housing, bell	250034-035	1
21	decal, fluid level	see decal section	1
22	elbow, 90_ 1/4" x 1/4"	250025-850	3
23	sender, temperature gauge	02250069-626	1
24	nut, hex M20 thin	02250055-630	1
25	bail, lifting	02250054-858	1
26	plug, 1/2"-14 x M20	02250054-857	1
27	tee, swivel	02250025-835	1
28	valve, pressure relief 1/2" (200 PSI)	250006-938	1
29	cap, separator element	250035-590	1
30	o-ring, viton 3 1/8" x 1/8"	826502-235	1
31	element, separator (III)	02250106-789	1
32	o-ring, viton 1 7/16" x 3/32"	826502-127	1
33	capscrew, socket M8 x 60MM	839308-060	3

(I) For maintenance on air filter, order repair kit no. 02250094-135.

(II) For maintenance on fluid filter, order repair kit no. 02250050-602.

(III) For maintenance on separator element, order repair kit no. 02250106-791.

PLEASE NOTE: WHEN ORDERING PARTS, INDICATE SERIAL NUMBER OF COMPRESSOR/DRYER.