



# **ROTARY SCREW AIR COMPRESSOR ES-8 Series**

**Standard and Basic Models**

**15, 20, 25 and 30 HP**

**11, 15, 18.5 and 22KW**

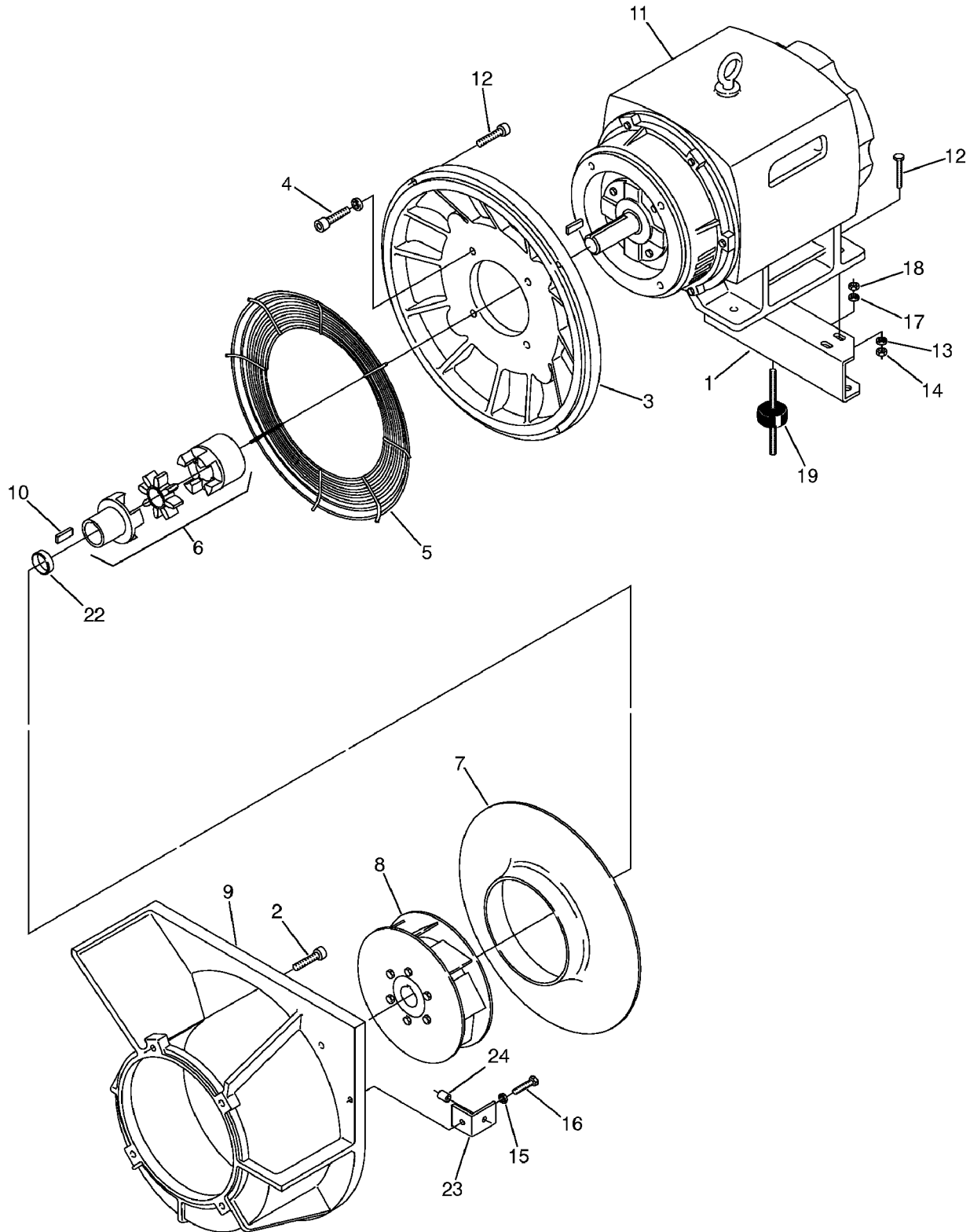
**OPERATOR'S  
MANUAL AND  
PARTS LIST**

**KEEP FOR  
FUTURE  
REFERENCE**

Part Number 02250117-368  
©Sullair Corporation

# ILLUSTRATIONS AND PARTS LIST

## 10.4 MOTOR, COUPLING, FAN AND PARTS



# ILLUSTRATIONS AND PARTS LIST

## 10.4 MOTOR, COUPLING, FAN AND PARTS

<i>key number</i>	<i>description</i>	<i>part number</i>	<i>quantity</i>
1	support, motor (15, 20, 25 HP/11, 15, 18.5 KW)	02250046-622	1
	Ssupport, motor (30 HP/22 KW)	02250046-624	1
2	capscrew, M12 x 30MM	829312-030	4
3	housing, adaptor motor (15, 20, 25 HP/11, 15, 18.5 KW)	02250045-831	1
	Shousing, adaptor motor (30 HP/22 KW)	02250045-833	1
4	capscrew, hex GR8 1/2"-13 x 1 1/4"	829408-125	4
5	guard, fan	02250055-600	1
6	coupling, 1 5/8" (I)	250042-728	1
7	venturi, fan inlet (15, 20 HP/11, 15 KW)	02250050-241	1
	Sventuri, fan inlet (25, 30 HP/18.5, 22 KW)	02250046-603	1
8	fan, backward inclined wheel (15, 25, 30 HP/11, 15, 18.5 KW) (I)	02250050-539	1
	Sfan, backward inclined wheel (20 HP/15 KW) (I)	02250050-240	1
9	housing, fan	02250045-829	1
10	key, 10 x 8 x 40	865210-040	1
11	motor	consult factory	1
12	screw, socket M12 x 40MM	829312-040	6
13	washer, 12MM	865712-370	2
14	nut, M12 x 1.75	825912-175	2
15	washer, 8MM	865408-170	1
16	capscrew, 8MM x 16MM	828008-016	1
17	washer, 12MM	865712-370	1
18	nut, hex M12 x 1.75	825912-175	1
19	isolator, vibration 75MM x 50MM	02250047-047	1
20	elbow, 45 liq-tite 1 1/4" (not shown)	846500-125	1
21	washer, conduit red. 1 1/2"-1" (not shown)	847006-040	2
22	spacer, shaft (15, 20, 25 HP/11, 15, 18.5 KW)	02250049-354	1
	Sspacer, shaft (30 HP/22 KW)	02250049-159	1
23	angle, support cooler	02250046-915	1
24	insert, 6MM	02250047-083	1

(I) Pre-heating required before assembly. For maintenance, order element no. 02250048-344.

**PLEASE NOTE: WHEN ORDERING PARTS, INDICATE SERIAL NUMBER OF COMPRESSOR**