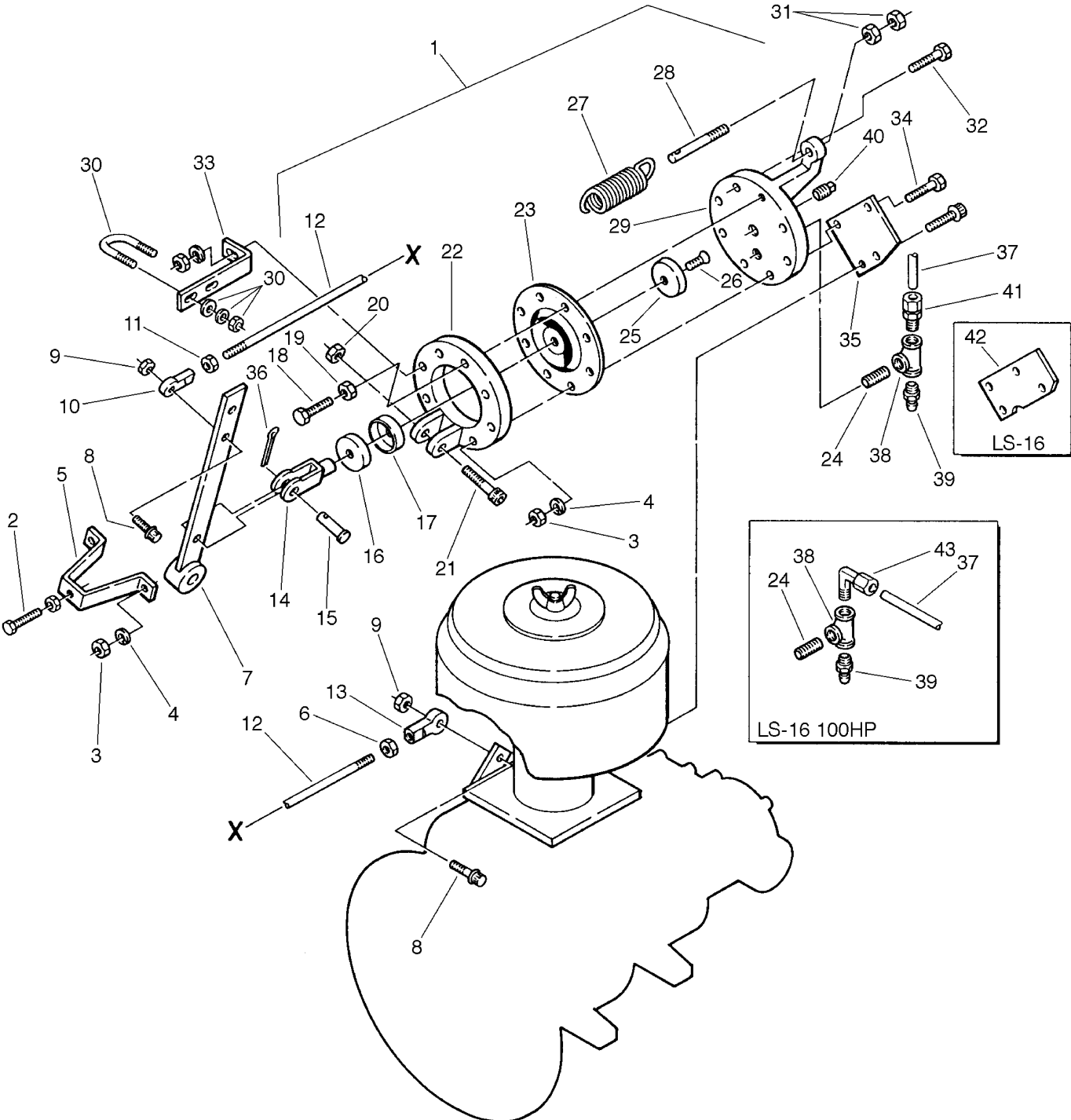


Section 7
ILLUSTRATIONS AND PARTS LIST

7.15 CAPACITY CONTROL SYSTEM (LS-12 AND LS-16 SERIES)



Section 7

ILLUSTRATIONS AND PARTS LIST

7.15 CAPACITY CONTROL SYSTEM (LS-12 AND LS-16 SERIES)

| <i>key number</i> | <i>description</i> | <i>part number</i> | <i>quantity</i> |
|-------------------|---|--------------------|-----------------|
| 1 | control, Sullicon (12 Series) (I) | 250026-010 | 1 |
| | Scontrol, Sullicon (12 Series) (I) | 250026-011 | 1 |
| 2 | capscrew, hex 3/8" - 16 x 2" gr5 | 828606-200 | 1 |
| 3 | nut, hex 3/8" - 16 | 824206-337 | 7 |
| 4 | washer, springlock regular 3/8" | 837506-094 | 4 |
| 5 | bracket, cont. stop | 020864 | 1 |
| 6 | nut, hex jam - left hand 5/16" | 824705-195 | 1 |
| 7 | lever, control | 011084 | 1 |
| 8 | capscrew, ferry head 5/16" x 1 1/2" | 828405-150 | 1 |
| 9 | nut, hex 5/16" - 18 | 824205-273 | 3 |
| 10 | rod end, spherical 5/16" - right hand | 040136 | 1 |
| 11 | nut, hex jam unfinished 5/16" - 24 - right hand | 824605-195 | 1 |
| 12 | rod end (12 Series) | 250002-552 | 1 |
| | Srod end (16 Series) | 020685 | 1 |
| 13 | rod end, spherical 5/16" - left hand | 042004 | 1 |
| 14 | yoke, rod end 1/4" - 28 | 040138 | 1 |
| 15 | pin, yoke 1/4" | 040065 | 1 |
| 16 | plunger | 020094 | 1 |
| 17 | seal, cup | 042538 | 1 |
| 18 | screw, machine hex head 5/16" - 24 x 2" | 831105-200 | 1 |
| 19 | nut, hex jam unfinished 5/16" - 24 - right hand | 824605-195 | 1 |
| 20 | nut, hex locking plated 3/8" - 16 | 825506-166 | 1 |
| 21 | screw, machine shoulder 3/8" x 2" | 830506-200 | 1 |
| 22 | body, control | 021635 | 1 |
| 23 | diaphragm, Sullicon | 250020-028 | 1 |
| 24 | nipple, galvanized 1/4" x 1 1/2" (12 Series only) | 823204-015 | 1 |
| | Snipple, galvanized 1/4" x close xs (16 Series only) | 823204-000 | 1 |
| 25 | washer, backup | 021172 | 1 |
| 26 | screw, sealing 1/4" - 28 x 3/4" nf | 041264 | 1 |
| 27 | spring, control light | 250006-526 | 1 |
| 28 | bolt, adjusting Sullicon spring | 250009-134 | 1 |
| 29 | cover, control | 021654 | 1 |
| 30 | u-bolt, 1/2" x 3/4" pipe | 829004-075 | 1 |
| 31 | nut, hex unfinished 3/8" - 16 | 824206-337 | 2 |

(Continued on page 83)

(I) For maintenance on Sullicon Control no.'s 250026-010 and 250026-011, order repair kit no. 250020-353.

PLEASE NOTE: WHEN ORDERING PARTS, ALWAYS INDICATE SERIAL NUMBER OF COMPRESSOR.