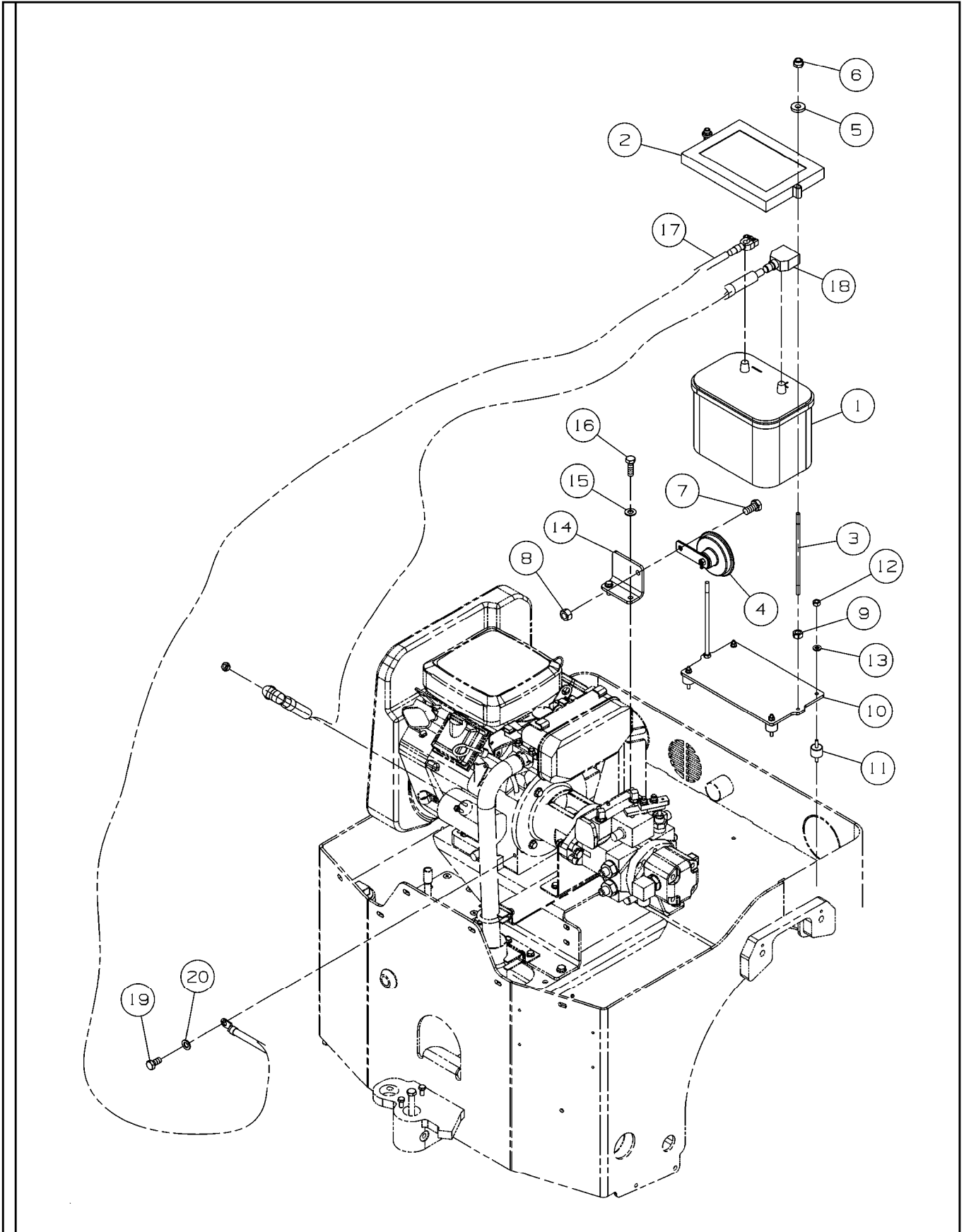


# BATTERY AND HORN INSTALLATION



## BATTERY AND HORN INSTALLATION

ITEM	COMM.NO.	DESCRIPTION	QTY	DIMENSIONS/NOTES
		BOM 59269779		
1	54616081	Battery	1	
2	58870627	Battery Hold Down	1	
3	59266296	Battery Tie Down	1	
4	59200758	Horn	1	
5	96712674	Hardened Washer	2	M8
6	96704606	Locknut	2	M8
7	96702279	H.H.C.S.	1	M10 x 20
8	96704812	Hex Nut	1	M10-1.5
9	96701370	Nut	2	M8-1.25
10	59266817	Battery Mounting Plate	1	
11	59259606	Sandwich Mount	4	
12	96704234	Nut	4	M6-10
13	96741053	Hardened Flatwasher	4	M6
14	59268672	Horn Bracket	1	
15	96741038	Hardened Flatwasher	2	M8
16	96702659	H.H.C.S.	2	M8-1.25 x 25
17	59252502	Battery Cable - Negative (Effective with s/n 165059)	1	
-	59242388	Battery Cable - Negative (Prior to s/n 165059)	1	
18	59242370	Battery Cable - Positive	1	
19	96702816	H.H.C.S.	1	M8 x 16
20	96702519	Hardened Washer	1	M8