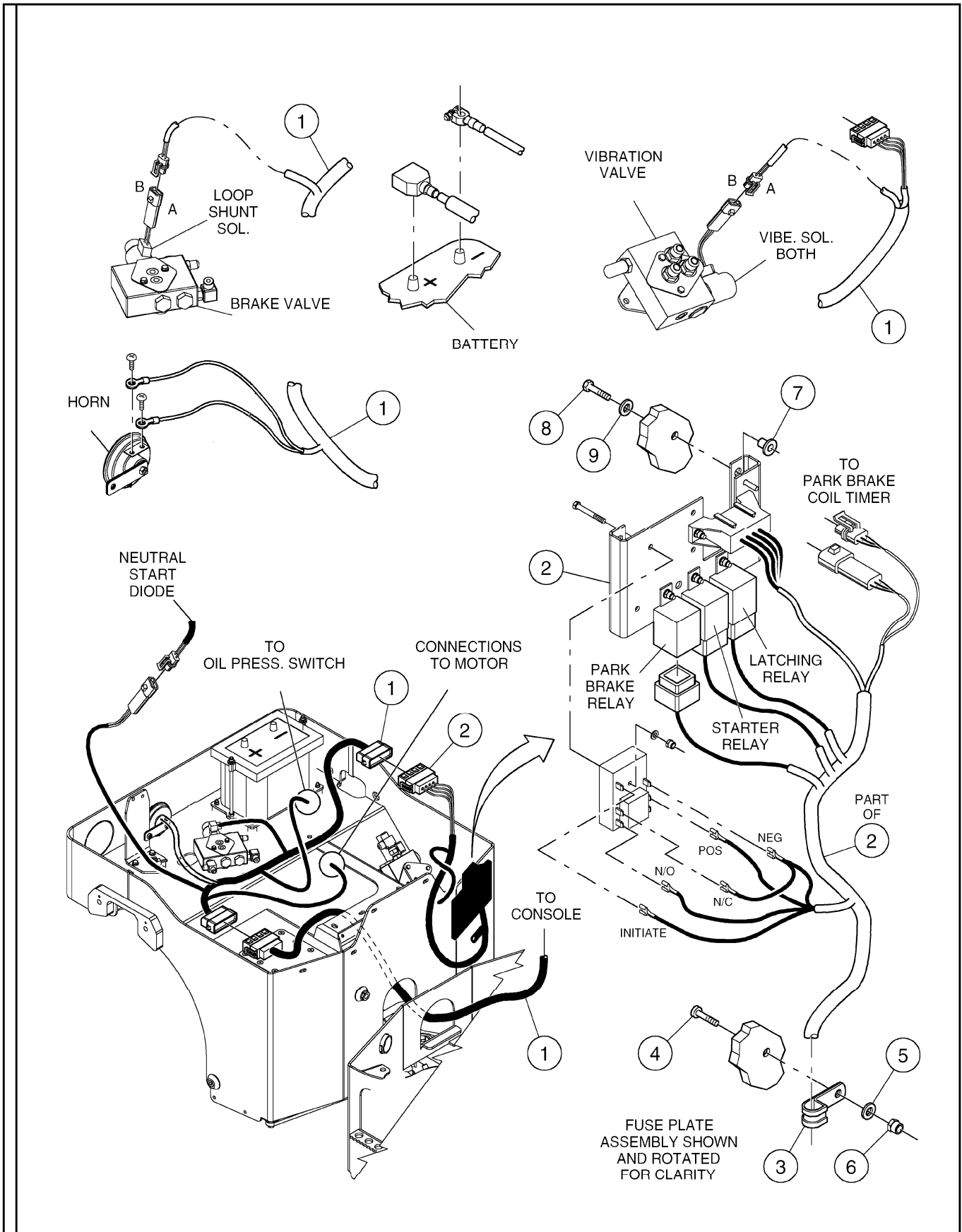


WIRING HARNESS INSTALLATION - SHEET 1 OF 2



WIRING HARNESS INSTALLATION - SHEET 1 OF 2

ITEM	COMM.NO.	DESCRIPTION	QTY	DIMENSIONS/NOTES
		<small>BOM 59280941</small>		
1	59210302	Main Wire Harness	1	
2	N.SV.A.	Fuse Plate Assembly	1	See Section - E.2
3	54479886	Conduit Clamp	1	
4	59148684	B.H.C.S.	1	M6 x 20
5	96741053	Hardened Flatwasher	1	M6
6	96702873	Locknut	1	M6
7	59229690	Well Nut	4	M5-0.8
8	96705744	H.H.C.S.	4	M5-0.8 x 25
9	96738554	Hardened Flatwasher	4	M5