

SAE 100 R1AT EN853 1SN

TEMPERATURE RANGE: -40°C (-40°F) TO + 120°C (+248°F)

APPLICATION: High pressure hydraulic oils, air and water.

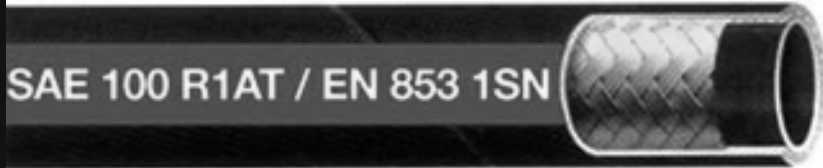
TUBE: Synthetic oil resistant rubber.

REINFORCEMENT: 1 high tensile steel wire braid.

COVER: Synthetic rubber - abrasion, ozone and weather resistant.

IMPULSE CYCLES: 150,000.

BRANDING: Red transfer tape with white text "SUNFLEX SAE 100 R1AT/EN 853 1SN."



PRODUCT CODE	DASH	HOSE SIZE					Max Working Pressure		Min Burst Pressure		Min Bend Radius	
		DN	I.D.		R.O.D	O.D.	PSI	BAR	PSI	BAR	INCH	MM
			INCH	MM	MM	MM						
HYD-R1T-04-SF-S	-4	6	1/4	6.4	11.1	13.4	3265	225	13060	900	3.9	100
HYD-R1T-05-SF-S	-5	8	5/16	7.9	12.27	15.0	3120	215	12480	850	4.5	105
HYD-R1T-06-SF-S	-6	10	3/8	9.5	15.1	17.4	2610	180	10440	720	5.1	130
HYD-R1T-08-SF-S	-8	12	1/2	12.7	18.2	20.3	2320	160	9280	640	7.1	180
HYD-R1T-10-SF-S	-10	16	5/8	15.9	21.4	23.7	1890	130	7560	520	7.9	200
HYD-R1T-12-SF-S	-12	19	3/4	19.0	25.4	27.7	1525	105	6100	420	9.5	240
HYD-R1T-16-SF-S	-16	25	1	25.4	33.3	35.6	1275	88	5100	352	11.8	300
HYD-R1T-20-SF-S	-20	32	1 1/4	31.8	40.0	43.0	915	63	3660	252	16.5	420
HYD-R1T-24-SF-S	-24	38	1 1/2	38.1	46.4	50.4	725	50	2900	200	19.7	500
HYD-R1T-32-SF-S	-32	51	2	50.8	59.5	63.5	580	40	2320	160	24.8	630
HYD-R1T-38-SF-S	-38	60	2 3/8	60.3	69.0	75.0	362	25	1450	100	30.0	762
HYD-R1T-40-SF-S	-40	64	2 1/2	63.5	73.0	79.5	362	25	1450	100	30.0	762
HYD-R1T-48-SF-S	-48	76	3	76.2	86.4	94.4	290	20	1160	80	36.0	915
HYD-R1T-56-SF-S	-56	90	3 1/2	90.0	98.5	105.5	220	15	800	60	42.0	1067
HYD-R1T-64-SF-S	-64	100	4	101.6	110.0	117.0	145	10	580	40	43.5	1105

SAE 100 R2AT EN 853 2SN

TEMPERATURE RANGE: -40°C (-40°F) TO + 120°C (+248°F)

APPLICATION: High pressure hydraulic oils, air and water.

TUBE: Synthetic oil resistant rubber.

REINFORCEMENT: 2 high tensile steel wire braids.

COVER: Synthetic rubber - abrasion, ozone and weather resistant.

IMPULSE CYCLES: 200,000.

BRANDING: Blue transfer tape with white text "SUNFLEX SAE 100 R2AT/EN 853 2SN."



PRODUCT CODE	DASH	HOSE SIZE					Max Working Pressure		Min Burst Pressure		Min Bend Radius	
		DN	I.D.		R.O.D	O.D.	PSI	BAR	PSI	BAR	INCH	MM
			INCH	MM	MM	MM						
HYD-R2T-04-SF-S	-4	6	1/4	6.4	12.7	15.1	5800	400	23200	1600	4.0	100
HYD-R2T-05-SF-S	-5	8	5/16	7.9	14.3	16.7	5100	350	20400	1400	4.5	115
HYD-R2T-06-SF-S	-6	10	3/8	9.5	16.7	19.1	4800	330	19200	1320	5.1	130
HYD-R2T-08-SF-S	-8	12	1/2	12.7	19.8	22.2	4000	276	16000	1103	7.1	180
HYD-R2T-10-SF-S	-10	16	5/8	15.9	23.0	25.4	3600	250	14400	1000	7.9	200
HYD-R2T-12-SF-S	-12	19	3/4	19.0	27.0	29.4	3100	215	12400	860	9.4	240
HYD-R2T-16-SF-S	-16	25	1	25.4	35.0	37.3	2400	165	9600	660	11.8	300
HYD-R2T-20-SF-S	-20	32	1 1/4	31.8	44.5	48.3	1800	125	7200	500	16.5	420
HYD-R2T-24-SF-S	-24	38	1 1/2	38.1	51.0	54.7	1300	90	5200	360	19.7	500
HYD-R2T-32-SF-S	-32	51	2	50.8	63.5	67.4	1160	80	4640	320	24.8	630
HYD-R2T-38-SF-S	-38	60	2 3/8	60.3	71.5	75.8	1015	70	4060	280	30.0	762
HYD-R2T-40-SF-S	-40	64	2 1/2	63.5	76.2	82.5	1000	69	4000	276	30.0	762
HYD-R2T-48-SF-S	-48	76	3	76.2	89.4	96.0	650	45	2600	179	36.0	915
HYD-R2T-56-SF-S	-56	90	3 1/2	90.0	101.2	107.5	400	28	1600	110	42.0	1067
HYD-R2T-64-SF-S	-64	100	4	101.6	113.2	118.5	365	25	1460	101	43.5	1105