

NO.	DESCRIPTION	DRAWING NO.	PARTS NO.
1	STATOR FRAME UPPER	M214-115103	P11-P9
2	STATOR FRAME UNDER	M214-115105	P11-P18
3	ASSEMBLY OF BEARING (D)	M873-158184	C2 P18-P28
4	ASSEMBLY OF BEARING (B)	M873-158185	C2 P18-P27
5	BEARING STAND (D)	M805-158171	P39-P42
6	BEARING STAND (B)	M805-158172	P44-P83
7	BEARING BUSH (D, B)	M820-115127	C2 P85-P88
8	PACKING RING (D-TURBINE SIDE)	M845-158184	C3 P71-P75
9	PACKING RING (B-EXCITER SIDE)	M845-158184	C4 P81-P85
10	PACKING RING (B-EXCITER SIDE)	M845-158184	C4 P86-P90
11	INSTALLATION OF INDEPENDENT	M700-388273	C1 P81-P83
12	INSTALLATION OF VIBRATION	M704-388363	C1 P86-P100
13	ACOUSTIC COVER	M831-115162	P103-P122
14	ACOUSTIC COVER SUPPORT	M331-159297	C1 P125-P126

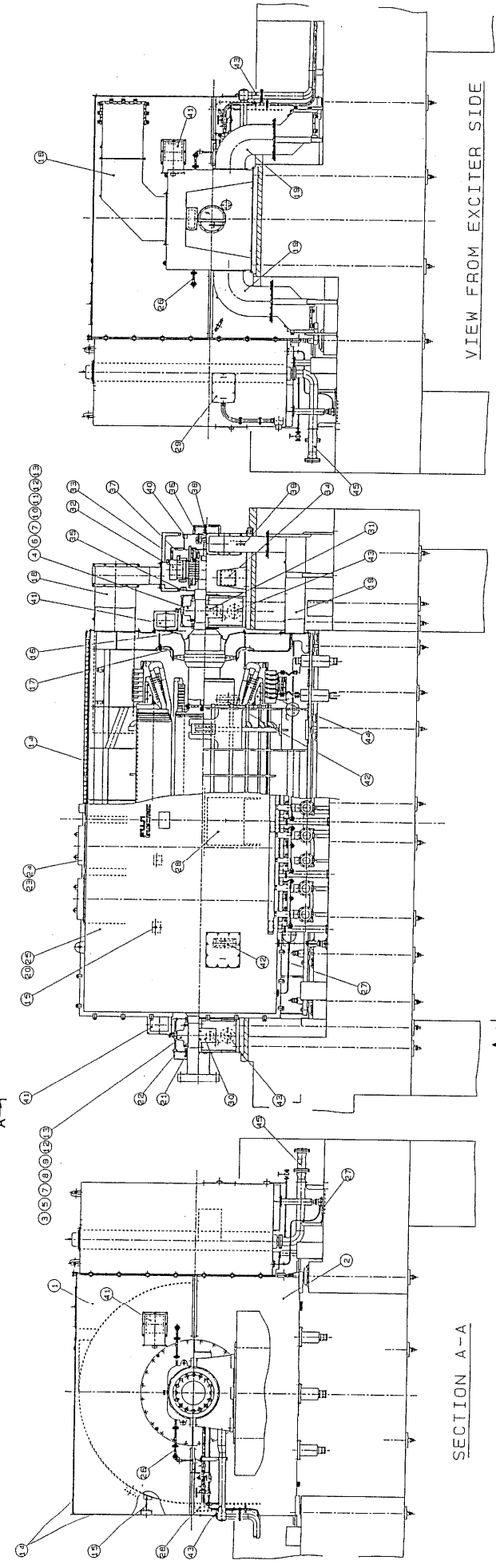
NO.	DESCRIPTION	DRAWING NO.	PARTS NO.
15	AIR SHIELD (D, B)	M328-259109	C2 P129-P131
16	FAN GUIDE (D, B)	M315-153106A	P138-P139
17	AIR DUCT (I)	M322-159282	P142-P144
18	AIR DUCT (E)	M322-159282	P151-P155
19	COOLER FRAME	M750-115182	P181-P186
20	EARTH BRUSH	M530-1E2474	C2 P171-P177
21	EARTH BRUSH COVER	M334-158908	P175-P177
22	AIR COOLER	T0499621-9	P188-P191
23	INSTALLATION OF AIR COOLER	M761-259382	P194-P195
24	ASSEMBLY OF COOLER FRAME	M750-259419	P202-P204
25	INLET AIR PIPING	M304-388985	P208-P210
26	INSTALLATION OF	M793-388972	P211-P218
27	BEARING TERMINAL BOX (D)	M550-4E2759	P220-P225
28	BEARING TERMINAL BOX (B)	M550-388936	P228-P231
29	NO.1 BEARING TERMINAL BOX	M550-388254	P228-P231

NO.	DESCRIPTION	DRAWING NO.	PARTS NO.
30	NO.2 BEARING TERMINAL BOX	M550-388935	P232-P240
31	STATOR FRAME FOR EX.1	M715-158783	P241-P242
32	EXCITER COVER	M333-115188	P245-P253
33	EX. AUX. TERMINAL BOX	M566-259158	P258-P282
34	COVER SUPPORT FOR EX.1	M330-159160	C2 P285-P289
35	EARTH DETECTION COVER	M332-155311	P271-P275
36	SHIELD FOR EX.1	M333-159181A	P278-P279
37	BRUSH FOR EARTH DETECTION DEVICE	M710-388762A	P282
38	SPACE HEATER FOR EX.1	M547-181373	P284
39	COVER SUPPORT FOR P.M.G.1	M330-158884	C2 P288-P292
40	MAKEUP AIR FILTER FOR GEN.1	M327-388244	C1 P295-P300
41	EXHAUSTIVE AIR FILTER FOR GEN.1	M327-4E2512	P301-P304
42	LUB. OIL PIPING	M793-259341	P307-P313
43	STATOR WINDING ASSY.	M510-158888A	P318-P310
44	COOLING WATER PIPING	M793-259486	P323-P327

NO.	DESCRIPTION	DRAWING NO.	PARTS NO.
45	NO.1 BEARING TERMINAL BOX	M550-388254	P228-P231
46	NO.2 BEARING TERMINAL BOX	M550-388935	P232-P240
47	STATOR FRAME FOR EX.1	M715-158783	P241-P242
48	EXCITER COVER	M333-115188	P245-P253
49	EX. AUX. TERMINAL BOX	M566-259158	P258-P282
50	COVER SUPPORT FOR EX.1	M330-159160	C2 P285-P289
51	EARTH DETECTION COVER	M332-155311	P271-P275
52	SHIELD FOR EX.1	M333-159181A	P278-P279
53	BRUSH FOR EARTH DETECTION DEVICE	M710-388762A	P282
54	SPACE HEATER FOR EX.1	M547-181373	P284
55	COVER SUPPORT FOR P.M.G.1	M330-158884	C2 P288-P292
56	MAKEUP AIR FILTER FOR GEN.1	M327-388244	C1 P295-P300
57	EXHAUSTIVE AIR FILTER FOR GEN.1	M327-4E2512	P301-P304
58	LUB. OIL PIPING	M793-259341	P307-P313
59	STATOR WINDING ASSY.	M510-158888A	P318-P310
60	COOLING WATER PIPING	M793-259486	P323-P327

TURBINE SIDE
(D SIDE)
A →

EXCITER SIDE
(B SIDE)
← B



SECTION A-A

VIEW FROM EXCITER SIDE

2 x 110 MW POWER STATION
HAYANG MINDU GEOTHERMAL POWER PROJECT
WEST JAVA, INDONESIA

MANDALA NUSANTARA LIMITED
DRAWING NO. SHEET NO. REV.

FOR INFORMATION

NO.	DESCRIPTION	DRAWING NO.	PARTS NO.
1	STATOR FRAME UPPER	M214-115103	P11-P9
2	STATOR FRAME UNDER	M214-115105	P11-P18
3	ASSEMBLY OF BEARING (D)	M873-158184	C2 P18-P28
4	ASSEMBLY OF BEARING (B)	M873-158185	C2 P18-P27
5	BEARING STAND (D)	M805-158171	P39-P42
6	BEARING STAND (B)	M805-158172	P44-P83
7	BEARING BUSH (D, B)	M820-115127	C2 P85-P88
8	PACKING RING (D-TURBINE SIDE)	M845-158184	C3 P71-P75
9	PACKING RING (B-EXCITER SIDE)	M845-158184	C4 P81-P85
10	PACKING RING (B-EXCITER SIDE)	M845-158184	C4 P86-P90
11	INSTALLATION OF INDEPENDENT	M700-388273	C1 P81-P83
12	INSTALLATION OF VIBRATION	M704-388363	C1 P86-P100
13	ACOUSTIC COVER	M831-115162	P103-P122
14	ACOUSTIC COVER SUPPORT	M331-159297	C1 P125-P126

CONSUMABLE PARTS
FOR MAINTENANCE

M798-259807