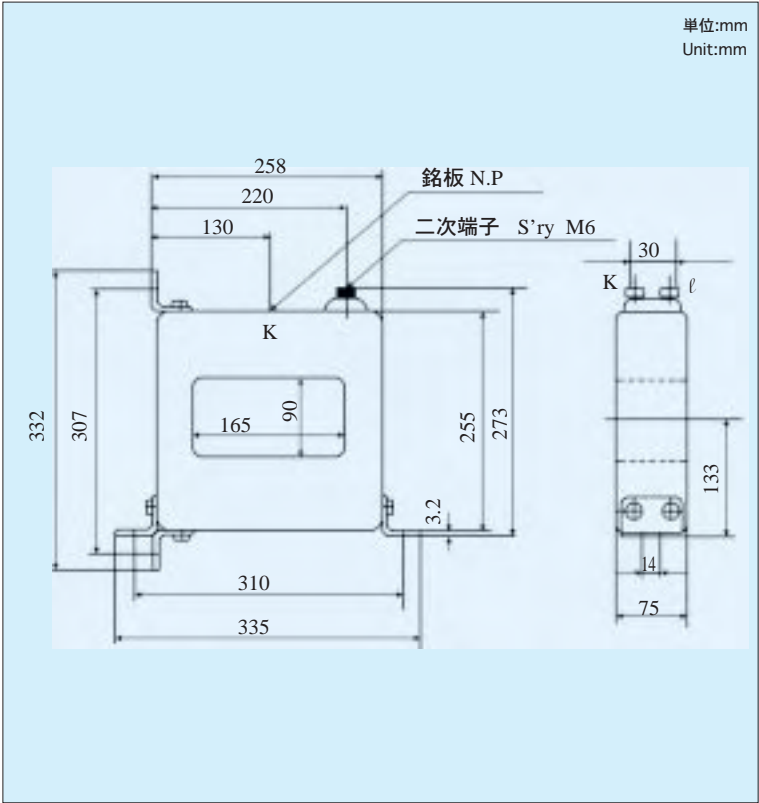
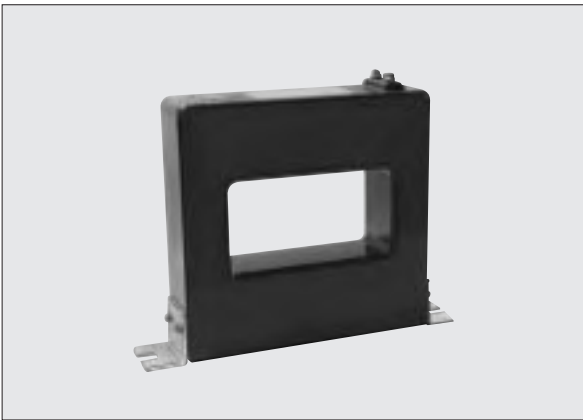


**低压用角貫通形変流器**  
**RECTANGULAR WINDOW TYPE CURRENT TRANSFORMER (1.15kV) (ES1-40H)**

- ブスバー貫通形
- 一般計器用、継電器用
- ブスバー貫通口は縦取付け、横取付けができます。
- 屋内用

- Busbar through type
- For metering application
- For compatibility of vertical and horizontal mounting
- Indoor use



形名 Type		ES1-40H		
準拠規格 Standard		JEC -1201	IEC -185	
最高電圧 Max.voltage		1.15kV	0.72kV	
耐電圧 Insulation level		4/-kV	0.72/3/-kV	
定格過電流 Short time current		40kA .1sec	40kA .1sec	
周波数 Frequency		50,60Hz	50 or 60Hz	
重量 Weight		10kg	10kg	
定格負担 Rated output		40VA	30VA	30VA
変流比および 確度階級 Ratio and Class	750/5 A	1PS n>5	1.0	5P5
	1000/5 A	1PS n>5	1.0	5P5
	1200/5 A	1PS n>10	1.0	5P10
	1500/5 A	1PS n>10	1.0	5P10
	2000/5 A	1PS n>10	1.0	5P10
	2500/5 A	1PS n>10	1.0	5P10
	3000/5 A	1PS n>10	1.0	5P10
	4000/5 A	1PS n>10	1.0	5P10
	5000/5 A	1PS n>10	1.0	5P10
6000/5 A	1PS n>10	1.0	5P10	5P10