



BIFFI

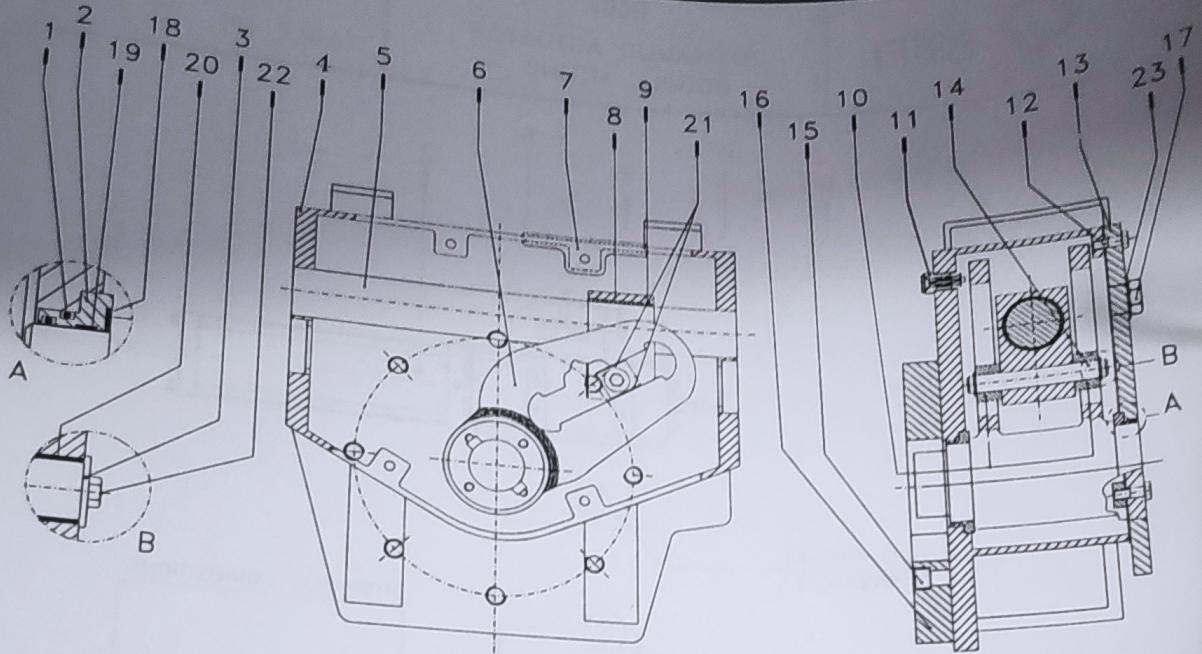
FILE: J:\DISK4\DS\229F\229F060S02

SCOTCH YOKE MECHANISM

Code : 229F060S02

PARTS LIST

TABLE N°



ITEM	Q.ty	DESCRIPTION	MATERIAL	PART N°
1	4	O - ring		
2	2	Yoke bushing seat	NBR	8092176000 ●
3	2	Washer	Carbon steel	329A060901
4	1	Housing	Fiberglide	329A060917
5	1	Guide bar	Carbon steel	329A060001
6	1	Yoke	Alloy steel	329A060008
7	1	Cover gasket	Carbon steel	329A060850
8	1	Guide block	Fiber	329A060009 ●
9	1	Bushing	Carbon steel	329A060005
10	2	Sliding block	Steel + Fiberglide	8810389300
11	1	Vent valve	Alloy steel	329A060903
12	21	Screw	Stainless steel	4272690150 ●
13	1	Cover	Carbon steel	8038413000
14	1	Guide block pin	Carbon steel	329A060010
15	8	Screw	Alloy steel	329A060910
16	1	Adaptor flange	Carbon steel	8055815000
17	2	Inspection plug	Carbon steel	3V5F480014
18	2	Yoke supporter washer	Carbon steel	8337016000
19	2	Yoke bushing seat	ERTACETAL	329A060905 ●
20	2	Guide block pin bushing	Steel + Fiberglide	329A060904
21	4	Sliding block seat	Steel + Fiberglide	8810389200
22	2	Screw	Steel + Fiberglide	329A060906
23	2	Washer	Stainless steel	329A060918
			Carbon steel	8942027000

● RECOMMENDED SPARE PARTS

- SPARE PARTS KIT CODE : G0229F060S02 -

DATE: 20/09/05
REV: 1
DRAWN: EE
CHECKED: AB