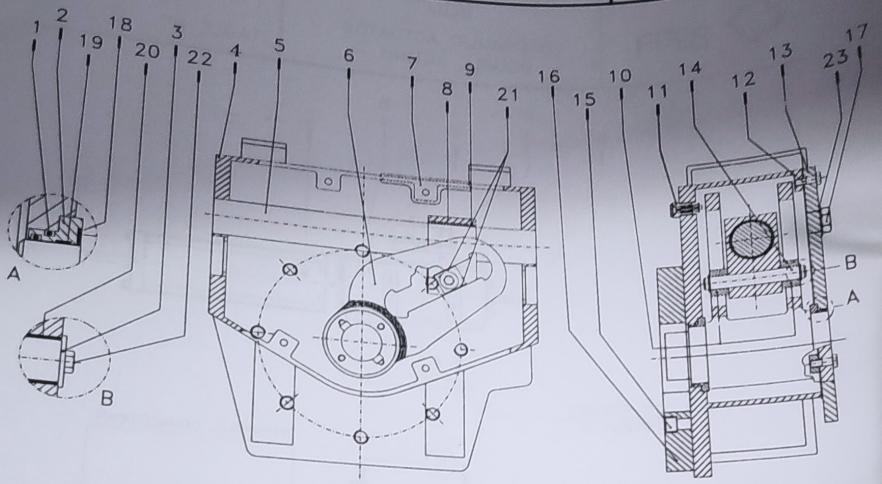


**BIFFI**  
 FILE: J:\DISK4\DS\229F\229F060S02

SCOTCH YOKE MECHANISM  
 Code : 229F060S02

**PARTS LIST**  
 TABLE N° .....



ITEM	Q.ty	DESCRIPTION	MATERIAL	PART N°
1	4	O - ring	NBR	8092176000
2	2	Yoke bushing seat	Carbon steel	329A060901
3	2	Washer	Fiberglide	329A060917
4	1	Housing	Carbon steel	329A060001
5	1	Guide bar	Alloy steel	329A060008
6	1	Yoke	Carbon steel	329A060850
7	1	Cover gasket	Fiber	329A060009
8	1	Guide block	Carbon steel	329A060005
9	1	Bushing	Steel + Fiberglide	8810389300
10	2	Sliding block	Alloy steel	329A060903
11	1	Vent valve	Stainless steel	4272690150
12	21	Screw	Carbon steel	8038413000
13	1	Cover	Carbon steel	329A060010
14	1	Guide block pin	Alloy steel	329A060910
15	8	Screw	Carbon steel	8055815000
16	1	Adaptor flange	Carbon steel	3V5F480014
17	2	Inspection plug	Carbon steel	8337016000
18	2	Yoke supporter washer	ERTACETAL	329A060905
19	2	Yoke bushing seat	Steel + Fiberglide	329A060904
20	2	Guide block pin bushing	Steel + Fiberglide	8810389200
21	4	Sliding block seat	Steel + Fiberglide	329A060906
22	2	Screw	Stainless steel	329A060918
23	2	Washer	Carbon steel	8942027000

● RECOMMENDED SPARE PARTS

- SPARE PARTS KIT CODE : G0229F060S02 -

DATE: 20/09/05  
 REV: 1  
 CHECKED: AB  
 DRAWN: EE