

RECEIVING WAREHOUSE I.D. TAG

Date: 1/5/2009

Item Number: 239506

Description: SEAT RING 2-6 IN; 35K

Item notes: ...

### UGI GN. SALAK WHSE

PO# : 03066  
ITEM# : 40  
QUANTITY : 1  
DATE : 22 APR 08  
LOCATION :  
CHARGE# : ACD36940  
DESCR. :

ITEM CODE# : SC:607820  
UNIT : EA  
BY : <239506>  
9043 CGSA

1/2-07  
UNOCAL  
GEOTHERMAL  
10-017  
1/2-07  
7/103

SEAT RING, 35K 2.6  
PN-011471205567 H "MASONICILAN"  
S/P 2"-150# RF. CONTROL VALVE MD. 35-3511  
TAG# CS6-LCV-3603, SS5-LCV-3503  
SS4-LCV-3403

SSER

and Controls

DRESSER

DRESSER SINGAPORE PTE LTD  
VALVE & CONTROLS DIVISION

PART TAG

M. N. REF No. MSP:000747

CUST. ORD. No. MN-7191

SPEC. TAG No.

ITEM No. 40 QTY. 1 PL

PART No. 011471-205-669

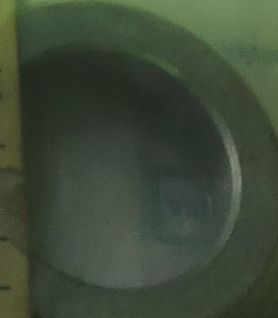
NAME SEAT RING

FOR USE IN  
SIZE No. CAT. No.

SERIAL No.

STANDARD PARTS MAY BE USED IN VARIOUS  
TYPES OF REGULATORS & CONTROL VALVES

GENUINE OEM  
REPLACEMENT PART



REPLACEMENT PART

Masonican Corp